


LOC I-MJX <b>109.9</b>	APP CRS <b>063°</b>	Rwy Idg <b>5835</b>
		TDZE <b>81</b>
		Apt Elev <b>81</b>

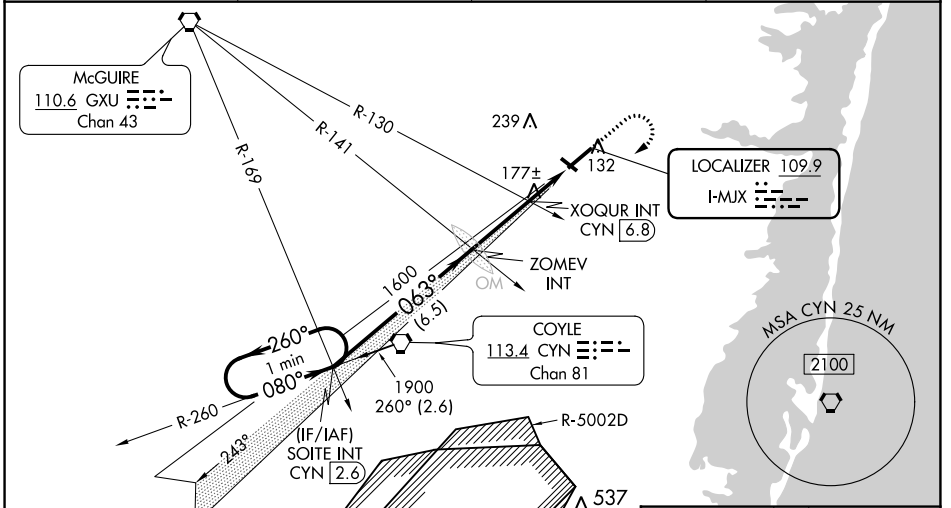
# ILS or LOC RWY 6

OCEAN COUNTY (MJX)

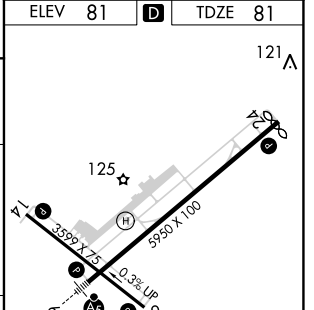
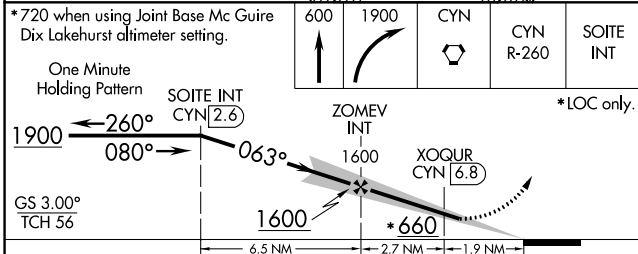
**NA** Circling Rwy 14, 32 NA at night. Inop table does not apply to S-ILS 6. For inop MALS, increase S-LOC 6 Cats A/B and S-LOC 6 XOQUR Fix minimums Cats A/B visibility to 1. When local altimeter setting not received, use Mc Guire Fld (Joint Base Mc Guire Dix Lakehurst) altimeter setting and increase all DA 41 feet and all MDA 60 feet; increase S-LOC 6 Cats C/D and Circling Cat C visibility 3/8 mile, Cat D 1/4 mile; increase XOQUR Fix minimums S-LOC 6 Cat C/D visibility 1/8 mile and Circling Cat D 1/4 mile. For inop MALS, when using Mc Guire Fld (Joint Base Mc Guire Dix Lakehurst) altimeter setting, increase S-ILS 6 all Cats visibility to 3/8 and S-LOC 6 Cats A/B and S-LOC 6 XOQUR Fix minimums Cats A/B visibility to 1, Cats C/D visibility to 1 1/8. Helicopter visibility reduction below 3/4 SM NA.

**MALS**  
  
**MISSED APPROACH:**  
 Climb to 600 then climbing right turn to 1900 direct CYN VORTAC then on CYN R-260 to SOITE INT/CYN 2.6 DME and hold.

AWOS-3PT <b>119.875</b>	MC GUIRE APP CON <b>126.475 363.8</b>	GCO <b>121.725</b>	UNICOM <b>122.7 (CTAF)</b>
----------------------------	--	-----------------------	-------------------------------



ELEV 81	TDZE 81
---------	---------



CATEGORY	A	B	C	D
S-ILS 6		331-3/4	250 (300-3/4)	
S-LOC 6	660-3/4	579 (600-3/4)	660-1/4	579 (600-1/4)
<b>C</b> CIRCLING	660-1	579 (600-1)	579 (600-1 3/4)	619 (700-2)
XOQUR FIX MINIMUMS (DUAL VOR RECEIVERS or DME REQUIRED)				
S-LOC 6	520-3/4	439 (500-3/4)	520-7/8	439 (500-7/8)
<b>C</b> CIRCLING	520-1	560-1	580-1 1/2	700-2
	439 (500-1)	479 (500-1)	499 (500-1 1/2)	619 (700-2)

MRL Rwy 14-32 **1**  
 HIRL Rwy 6-24 **1**  
 REIL Rws 14, 24 and 32 **1**

FAF to MAP 4.6 NM

Knots	60	90	120	150	180
Min:Sec	4:36	3:04	2:18	1:50	1:32

NE-2, 22 FEB 2024 to 21 MAR 2024

NE-2, 22 FEB 2024 to 21 MAR 2024

WAAS CH <b>86433</b> <b>W24A</b>	APP CRS <b>243°</b>	Rwy Idg TDZE Apt Elev	<b>5835</b> <b>81</b> <b>86</b>
--	------------------------	-----------------------------	---------------------------------------

# RNAV (GPS) RWY 24

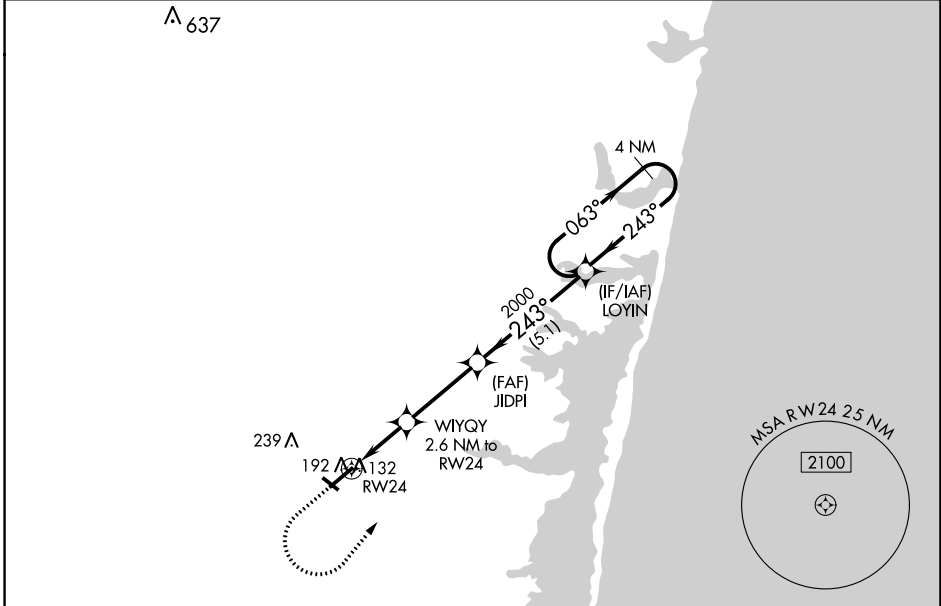
OCEAN COUNTY (MJX)

RNP APCH.

▼ Circling Rwy 14, 32 NA at night. For uncompensated Baro-VNAV systems, LNAV/VNAV NA below -15°C or above 43°C. Rwy 24 helicopter visibility reduction below 3/4 SM NA.

MISSED APPROACH: Climb to 600 then climbing left turn to 2000 direct to LOYIN and hold.

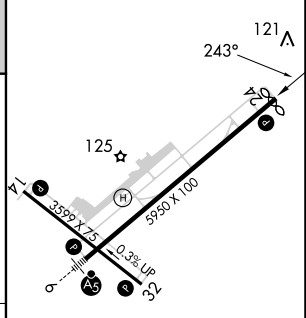
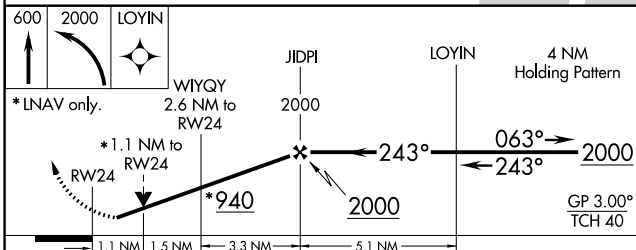
AWOS-3PT <b>119.875</b>	MC GUIRE APP CON <b>126.475 363.8</b>	GCO <b>121.725</b>	UNICOM <b>122.7 (CTAF) 0</b>
----------------------------	--	-----------------------	---------------------------------



NE-2, 22 FEB 2024 to 21 MAR 2024

NE-2, 22 FEB 2024 to 21 MAR 2024

ELEV 86	<b>D</b>	TDZE 81
---------	----------	---------



CATEGORY	A	B	C	D
LPV DA		331-3/4	250 (300-3/4)	
LNAV/VNAV DA		358-7/8	277 (300-7/8)	
LNAV MDA		460-1	379 (400-1)	
<b>C</b> CIRCLING	540-1 454 (500-1)	560-1 474 (500-1)	580-1 1/2 494 (500-1 1/2)	700-2 614 (700-2)

MIRL Rwy 14-32 **0**  
 HIRL Rwy 6-24 **0**  
 REIL Rws 14, 24 and 32 **0**

WAAS CH <b>93733</b> <b>W06A</b>	APP CRS <b>063°</b>	Rwy Idg <b>5835</b> TDZE <b>81</b> Apt Elev <b>81</b>
--	------------------------	---

# RNAV (GPS) RWY 6

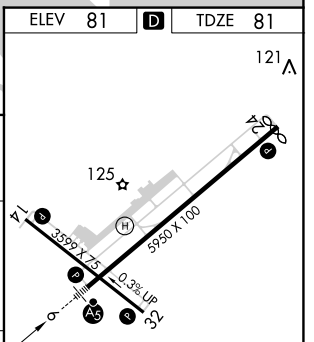
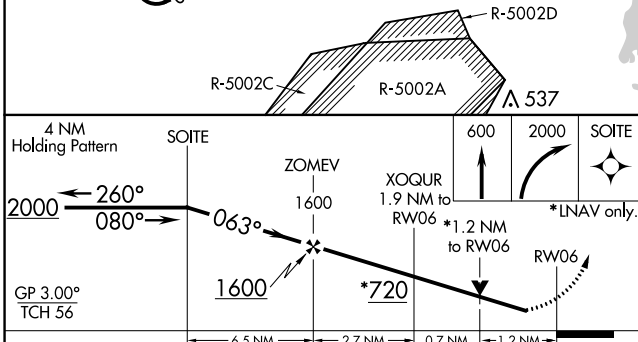
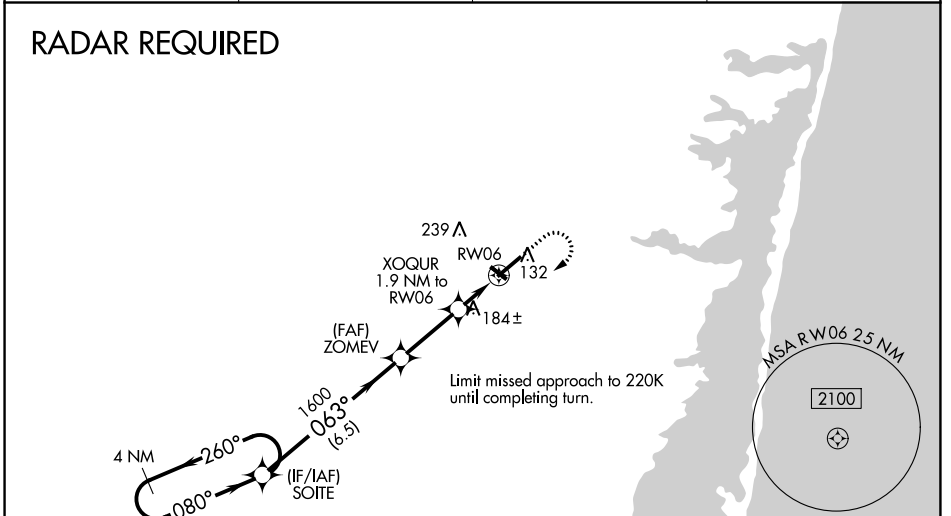
OCEAN COUNTY (MJX)

**⚠** Circling Rwy 14, 32 NA at night. For uncompensated Baro-VNAV systems, LNAV/VNAV NA below -15°C (5°F) or above 54°C (130°F). DME/DME RNP -0.3 NA. Inop table does not apply to LPV. For inop MALSR, increase LNAV/VNAV all Cats and LNAV Cats A/B visibility to 1. When local altimeter setting not received, use Mc Guire Fld (Joint Base Mc Guire Dix Lakehurst) altimeter setting and increase all DA 41 feet and all MDA 60 feet; increase LNAV Cats C/D visibility 1/8 mile and Circling Cat D visibility 1/4 mile. For inop MALSR when using Mc Guire Fld (Joint Base Mc Guire Dix Lakehurst) altimeter setting, increase LPV all Cats visibility to 1/8, LNAV/VNAV all Cats visibility to 1/8, LNAV Cats A/B visibility to 1, and LNAV Cats C/D visibility to 1/8. Helicopter visibility reduction below 3/4 SM NA. VDP and Baro-VNAV NA when using Mc Guire Fld (Joint Base Mc Guire Dix Lakehurst) altimeter setting.

**MALSR**

**MISSED APPROACH:**  
Climb to 600 then climbing right turn to 2000 direct SOITE and hold.

AWOS-3PT <b>119.875</b>	MC GUIRE APP CON <b>126.475 363.8</b>	GCO <b>121.725</b>	UNICOM <b>122.7 (CTAF)</b>
----------------------------	--	-----------------------	-------------------------------



CATEGORY	A	B	C	D
LPV DA	331-3/4 250 (300-3/4)			
LNAV/VNAV DA	405-3/4 324 (400-3/4)			
LNAV MDA	520-3/4 439 (500-3/4)	520-7/8 439 (500-7/8)		
<b>C</b> CIRCLING	520-1 439 (500-1)	560-1 479 (500-1)	580-1 1/2 499 (500-1 1/2)	700-2 619 (700-2)

ELEV 81 **D** TDZE 81

121 A

MIRL Rwy 14-32 **ⓘ**  
HIRL Rwy 6-24 **ⓘ**  
REIL Rws 14, 24 and 32 **ⓘ**

NE-2, 22 FEB 2024 to 21 MAR 2024

NE-2, 22 FEB 2024 to 21 MAR 2024

VORTAC CYN <b>113.4</b> Chan <b>81</b>	APP CRS <b>234°</b>	Rwy Idg TDZE <b>81</b>	<b>5835</b> Apt Elev <b>86</b>
--	------------------------	---------------------------	--------------------------------------

# VOR RWY 24

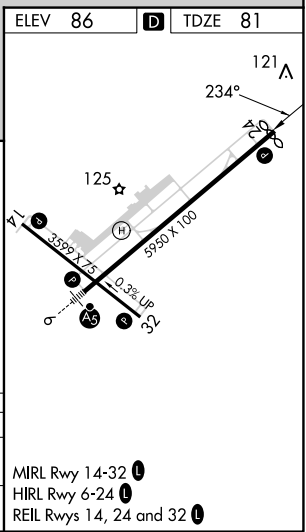
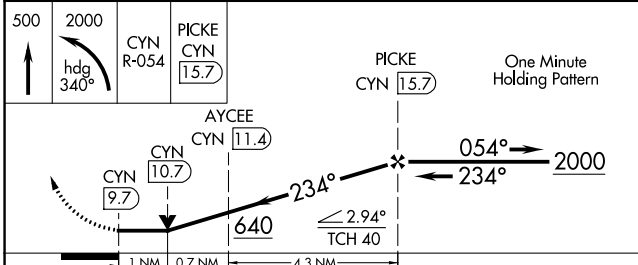
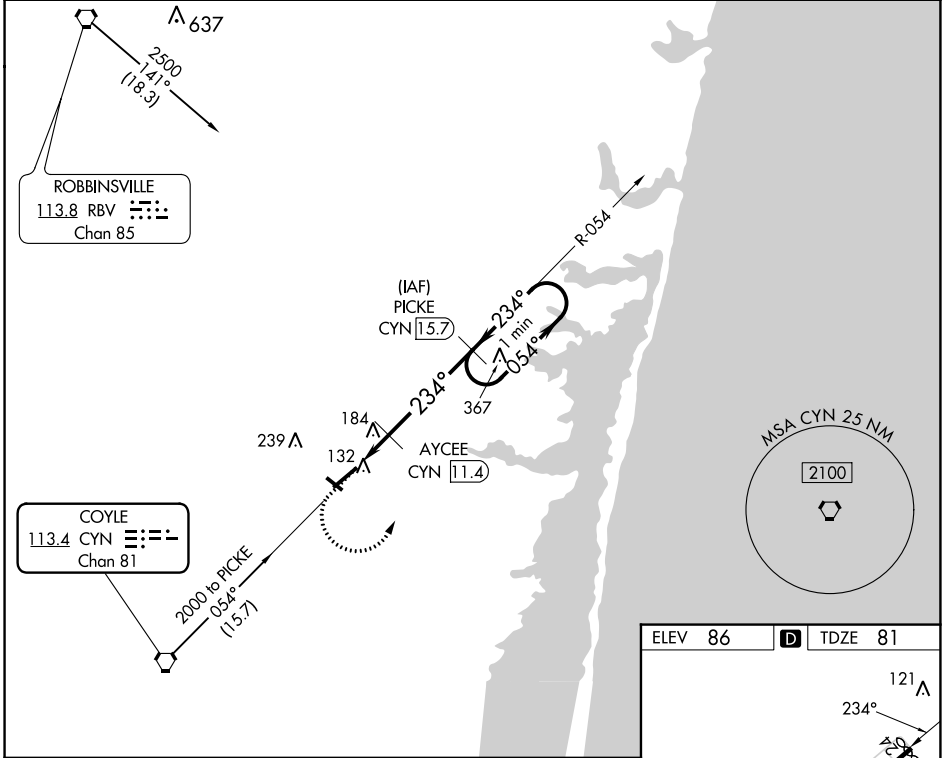
OCEAN COUNTY (MJX)

DME required for procedure entry.  
DME required.

**▼** Rwy 24 helicopter visibility reduction below 3/4 SM NA.  
Circling Rwy 14, 32 NA at night.

MISSED APPROACH: Climb to 500 then climbing left turn to 2000 on heading 340° and on CYN VORTAC R-054 to PICKE/CYN 15.7 DME and hold.

AWOS-3PT <b>119.875</b>	MC GUIRE APP CON <b>126.475 363.8</b>	GCO <b>121.725</b>	UNICOM <b>122.7 (CTAF)</b>
----------------------------	--	-----------------------	-------------------------------



CATEGORY	A	B	C	D
S-24		440-1	359 (400-1)	
<b>C</b> CIRCLING	540-1 454 (500-1)	560-1 474 (500-1)	580-1½ 494 (500-1½)	700-2 614 (700-2)

MIRL Rwy 14-32  
HIRL Rwy 6-24  
REIL Rws 14, 24 and 32

NE-2, 22 FEB 2024 to 21 MAR 2024

NE-2, 22 FEB 2024 to 21 MAR 2024

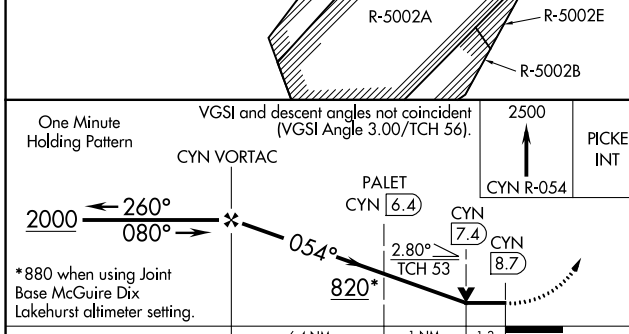
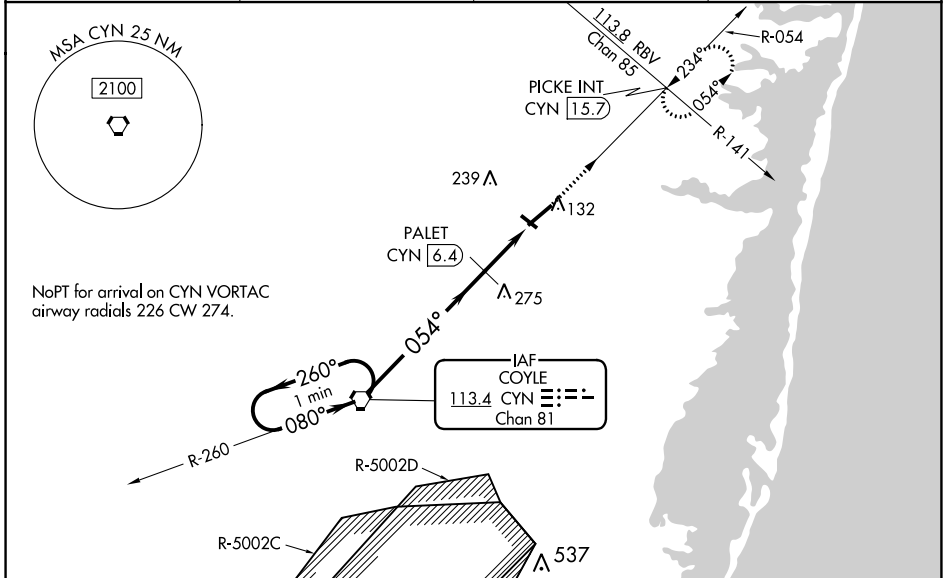
VORTAC CYN <b>113.4</b> Chan <b>81</b>	APP CRS <b>054°</b>	Rwy Idg <b>5835</b> TDZE <b>81</b> Apt Elev <b>81</b>
--	------------------------	---

**VOR RWY 6**  
OCEAN COUNTY (MJX)

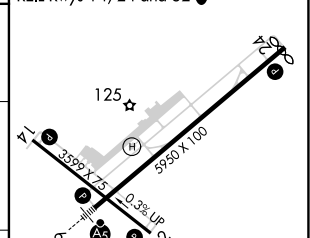
**NA** Circling Rwy 14, 32 NA at night. For inop MALS/R, increase S-6 Cat A visibility to 1, S-6 Cats C/D visibility to 2, and PALET Fix Minimums S-6 Cats A/B visibility to 1. When local altimeter setting not received, use Mc Guire Fld (Joint Base Mc Guire Dix Lakehurst) altimeter setting and increase all MDA 60 feet; increase S-6 Cats C/D visibility 1/8 mile, Circling Cat C visibility 1/2 mile, and Circling Cat D visibility 1/4 mile; increase PALET Fix Minimums Circling Cat D visibility 1/4 mile. For inop MALS/R when using Mc Guire Fld (Joint Base Mc Guire Dix Lakehurst) altimeter setting, increase S-6 Cat A visibility to 1, Cats C/D visibility to 2 1/2, and PALET Fix Minimums Cats A/B visibility to 1. Helicopter visibility reduction below 3/4 SM NA. VDP NA when using Mc Guire Fld (Joint Base Mc Guire Dix Lakehurst) altimeter setting.

**MALS/R** MISSED APPROACH: Climb to 2500 on CYN R-054 to PICKE INT/CYN 15.7 DME and hold.

AWOS-3PT <b>119.875</b>	MC GUIRE APP CON <b>126.475 363.8</b>	GCO <b>121.725</b>	UNICOM <b>122.7 (CTAF)</b>
----------------------------	--	-----------------------	-------------------------------



ELEV 81	TDZE 81
MRL Rwy 14-32	121
HIRL Rwy 6-24	
REIL Rws 14, 24 and 32	



CATEGORY	A	B	C	D
S-6	820-3/4	739 (800-3/4)	820-1 3/4	739 (800-1 3/4)
<b>C</b> CIRCLING	820-1	820-1 1/4	820-2	820-2 1/4
	739 (800-1)	739 (800-1 1/4)	739 (800-2)	739 (800-2 1/4)
PALET FIX MINIMUMS				
S-6	540-3/4	459 (500-3/4)	540-1	459 (500-1)
<b>C</b> CIRCLING	540-1	560-1	580-1 1/2	700-2
	459 (500-1)	479 (500-1)	499 (500-1 1/2)	619 (700-2)

FAF to MAP 8.7 NM					
Knots	60	90	120	150	180
Min:Sec	8:42	5:48	4:21	3:29	2:54

NE-2, 22 FEB 2024 to 21 MAR 2024

NE-2, 22 FEB 2024 to 21 MAR 2024