

LOC I-MMU 110.3	APP CRS 229°	Rwy ldg 5998
		TDZE 184
		Apt Elev 187

ILS or LOC RWY 23

MORRISTOWN MUNI (MMU)

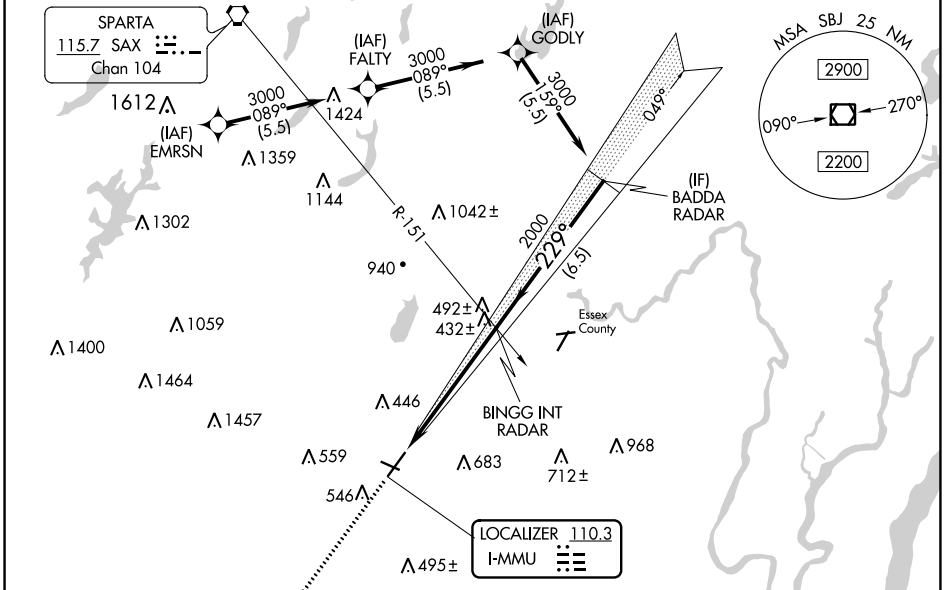
RNAV 1-GPS or RADAR required for procedure entry.
From EMRSN: RNAV 1-GPS required.

⚠ Circling to Rwy 13, 31 NA at night. Autopilot coupled approach NA below 732. For inop ALS, increase S-LOC 23 Cats C/D visibility to 1 3/8 SM.

MALSR

MISSED APPROACH: Climb to 2000 on heading 229° and on SBJ VOR/DME R-070 to SBJ VOR/DME and hold.

ATIS 124.25	NEW YORK APP CON 127.6 379.9	MORRISTOWN TOWER ★ 118.10 (CTAF) 353.9	GND CON 134.2	CLNC DEL 128.6
-----------------------	--	--	-------------------------	--------------------------



ELEV 187	TDZE 184
----------	----------

MISSED APCH FIX SOLBERG SBJ 112.9 Chan 76

229°

2000

3000

2000

GS 3.00° TCH 55

5.5 NM

6.5 NM

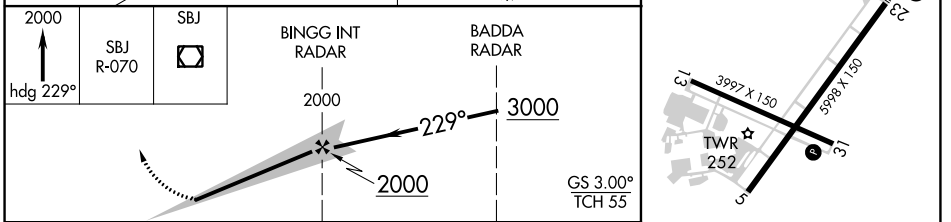
3997 X 150

5998 X 150

TWR 252

31

5



CATEGORY	A	B	C	D
S-ILS 23		384-1/2	200 (200-1/2)	
S-LOC 23	700-1/2	516 (600-1/2)	700-1	516 (600-1)
C CIRCLING	860-1 673 (700-1)	900-1 713 (800-1)	1000-2 1/2 813 (900-2 1/2)	1200-3 1013 (1100-3)

REIL Rws 5 and 31

HIRL Rwy 5-23

MIRL Rwy 13-31

FAF to MAP 5.5 NM

Knots	60	90	120	150	180
Min:Sec	5:30	3:40	2:45	2:12	1:50

NE-2, 22 FEB 2024 to 21 MAR 2024

NE-2, 22 FEB 2024 to 21 MAR 2024

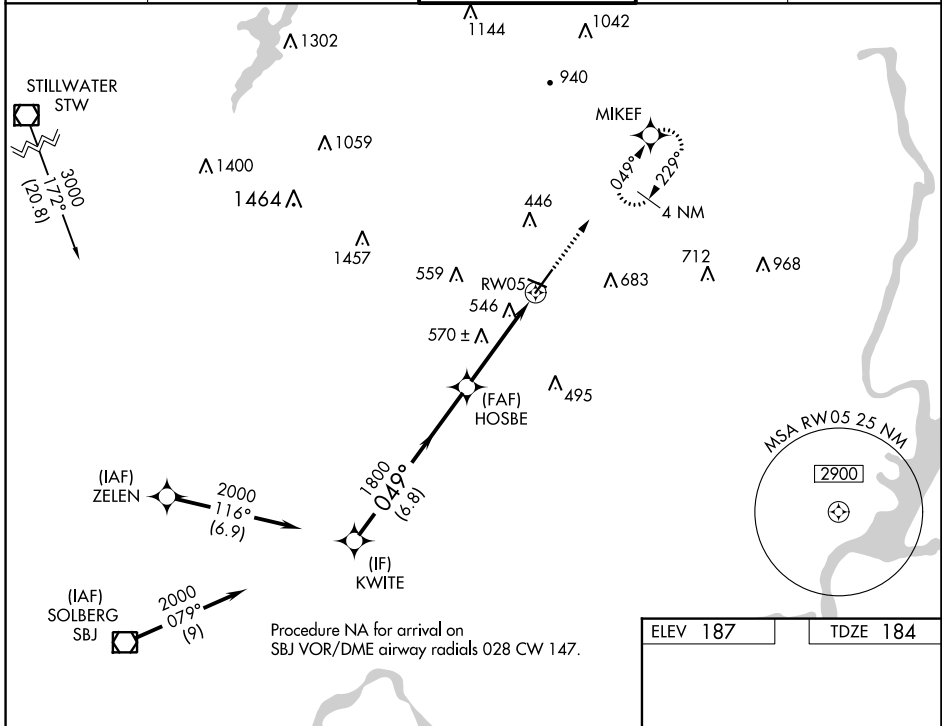
WAAS CH 97720 W05A	APP CRS 049°	Rwy Idg 5998 TDZE 184 Apt Elev 187
--	------------------------	---

RNAV (GPS) RWY 5

MORRISTOWN MUNI (MMU)

RNP APCH.	MISSED APPROACH: Climb to 2500 direct MIKEF and hold, continue climb-in-hold to 2500.
<p>▼ Rwy 5 helicopter visibility reduction below 3/4 SM NA.</p> <p>▲ For uncompensated Baro-VNAV systems, procedure NA below -15°C or above 46°C. Circling Rwy 13, 31 NA at night.</p>	

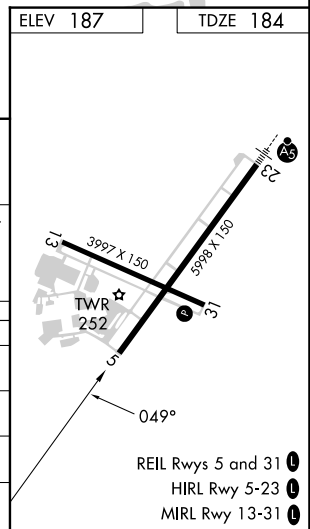
ATIS 124.25	NEW YORK APP CON 127.6 379.9	MORRISTOWN TOWER* 118.1 (CTAF) 353.9	GND CON 134.2	CLNC DEL 128.6
-----------------------	--	---	-------------------------	--------------------------



NE-2, 22 FEB 2024 to 21 MAR 2024

NE-2, 22 FEB 2024 to 21 MAR 2024

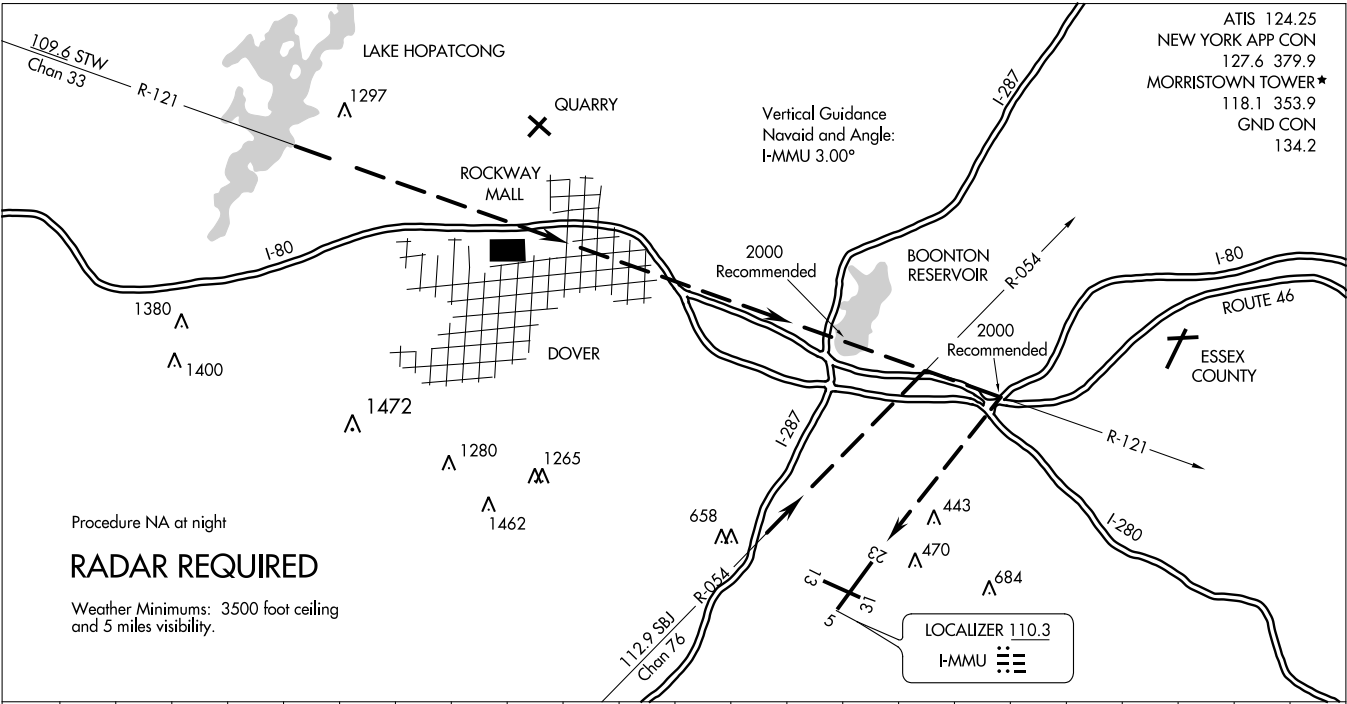
	KWITE	HOSBE	RW05	MIKEF
	2000	1800	2500	2500
	GP 3.50°	049°	*1.7 NM to RW05	*LNAV only.
	TCH 59	1800	RW05	
	6.8 NM	2.5 NM	1.7 NM	
CATEGORY	A	B	C	D
LPV DA		879-2	695 (700-2)	
LNAV/VNAV DA		893-2	709 (800-2)	
LNAV MDA	880-1	696 (700-1)	880-2	696 (700-2)
CIRCLING	880-1 693 (700-1)	900-1 713 (800-1)	1000-2½ 813 (900-2½)	1200-3 1013 (1100-3)



ATIS 124.25
 NEW YORK APP CON
 127.6 379.9
 MORRISTOWN TOWER ★
 118.1 353.9
 GND CON
 134.2

Vertical Guidance
 Navaid and Angle:
 I-MMU 3.00°

LOCALIZER 110.3
 I-MMU



1 NM	2	3	4	5	6	7	8	9	10	11	12	13	14	15	16	17	18	19	20	21	22	23
------	---	---	---	---	---	---	---	---	----	----	----	----	----	----	----	----	----	----	----	----	----	----

When approaching the airport from the northwest, expect vectors to intercept the STW R-121.
 When you see the highway junction of Rts. 46, 80, and 280, proceed to that point to turn final for Rwy 23.

When approaching the airport from the southwest, expect vectors to intercept the SBJ R-054.
 When you see Rt. 287, follow it until turning base over Rt. 80. Turn final over the junction of Rts. 46, 80 and 280 for Rwy 23.

Procedure NA at night
RADAR REQUIRED
 Weather Minimums: 3500 foot ceiling
 and 5 miles visibility.

APP CRS	Rwy Idg	5998
229°	TDZE	183
	Apt Elev	187

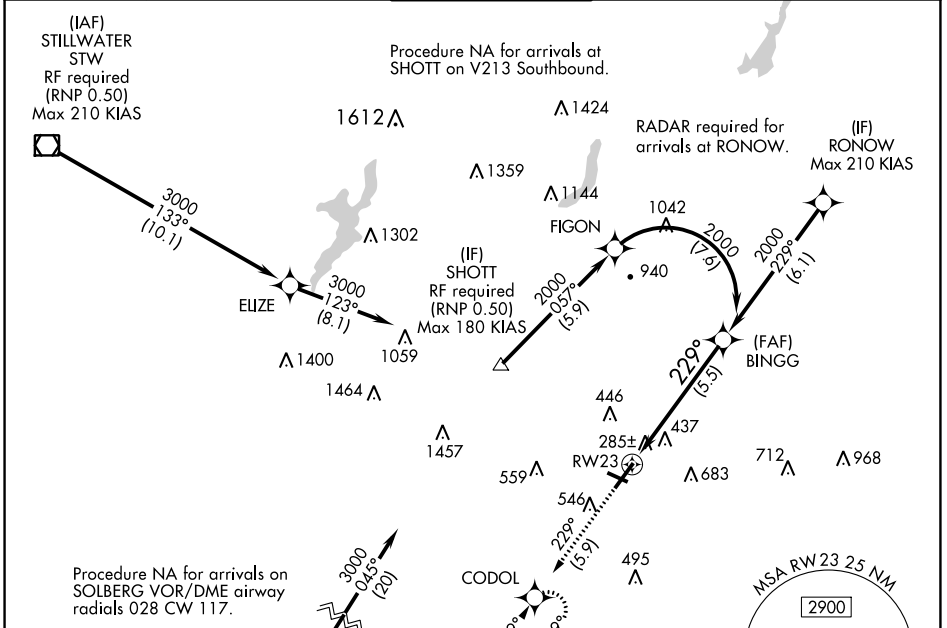
RNAV (RNP) Y RWY 23

MORRISTOWN MUNI (MMU)

For uncompensated Baro-VNAV systems, procedure NA below -15°C (5°F) or above 48°C (118°F). When local altimeter setting not received, procedure NA. GPS required. For inoperative MALSRL, increase RNP 0.11 all Cats visibility to 1¼ mile and RNP 0.30 all Cats visibility to 2 miles. Visibility reduction by helicopters NA.

MALSRL MISSED APPROACH: Climb to 2000 on track 229° to CODOL and hold.

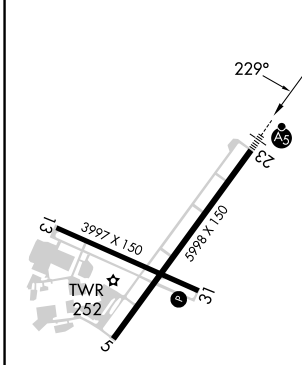
ATIS 124.25	NEW YORK APP CON 127.6 379.9	MORRISTOWN TOWER* 118.1 (CTAF)353.9	GND CON 134.2	CLNC DEL 128.6
-----------------------	--	---	-------------------------	--------------------------



NE-2, 22 FEB 2024 to 21 MAR 2024

NE-2, 22 FEB 2024 to 21 MAR 2024

ELEV 187	TDZE 183
----------	----------



↑	tr 229°	CODOL	See planview for multiple IF locations.
BINGG 2000		RW23	
5.5 NM		GP 3.00° TCH 55	

CATEGORY	A	B	C	D
RNP 0.11 DA	553-¾ 370 (400-¾)			
RNP 0.30 DA	788-1½ 605 (700-1½)			

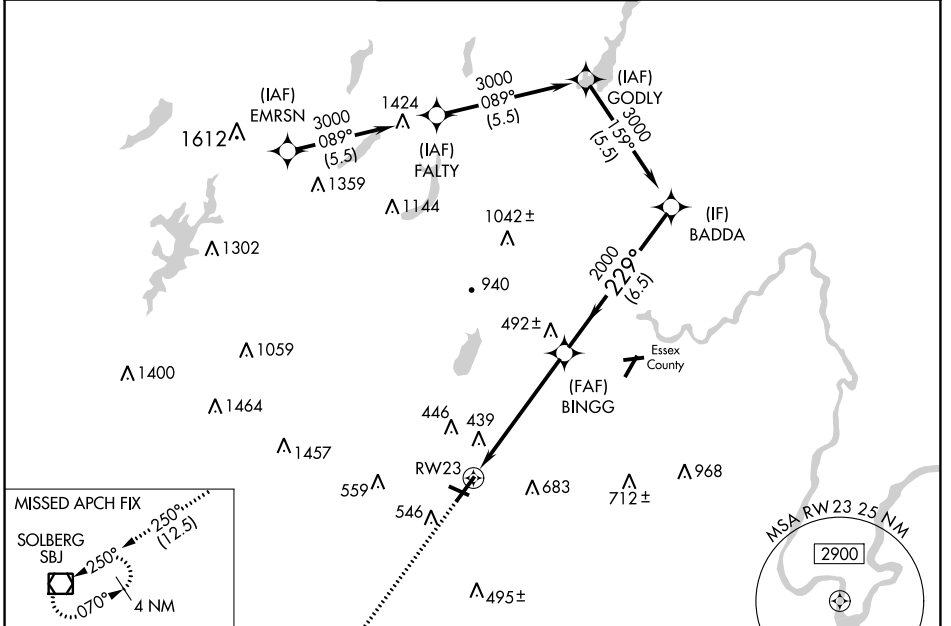
AUTHORIZATION REQUIRED

WAAS CH 45621 W23A	APP CRS 229°	Rwy Idg TDZE 184 Apt Elev 187	5998
--	------------------------	---	-------------

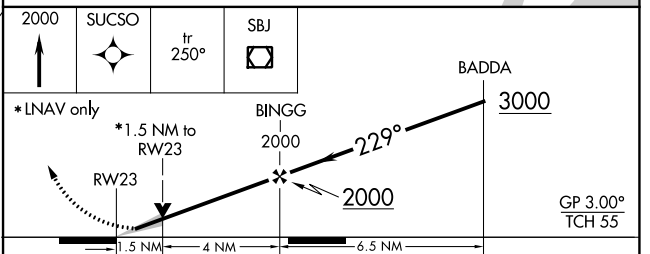
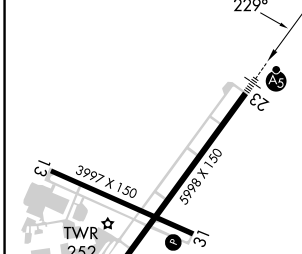
RNAV (GPS) Z RWY 23

MORRISTOWN MUNI (MMU)

RNP APCH.		MALSR	MISSED APPROACH: Climb to 2000 direct SUSCO then on track 250° to SBJ VOR/DME and hold.	
ATIS 124.25	NEW YORK APP CON 127.6 379.9	MORRISTOWN TOWER ★ 118.1 (CTAF) 353.9	GND CON 134.2	CLNC DEL 128.6



ELEV 187	TDZE 184
----------	----------



CATEGORY	A	B	C	D
LPV DA		384-1/2	200 (200-1/2)	
LNAV/VNAV DA		749-1/4	565 (600-1/4)	
LNAV MDA	700-1/2	516 (600-1/2)	700-1	516 (600-1)
C CIRCLING	860-1 673 (700-1)	900-1 713 (800-1)	1000-2 1/2 813 (900-2 1/2)	1200-3 1013 (1100-3)

REIL Rwy 5 and 31
HIRL Rwy 5-23
MIRL Rwy 13-31

NE-2, 22 FEB 2024 to 21 MAR 2024

NE-2, 22 FEB 2024 to 21 MAR 2024