

APP CRS	Rwy Idg	<b>3013</b>
<b>167°</b>	TDZE	<b>13</b>
	Apt Elev	<b>13</b>

# RNAV (GPS) RWY 17

DARE COUNTY RGNL (MQI)

RNP APCH - GPS.

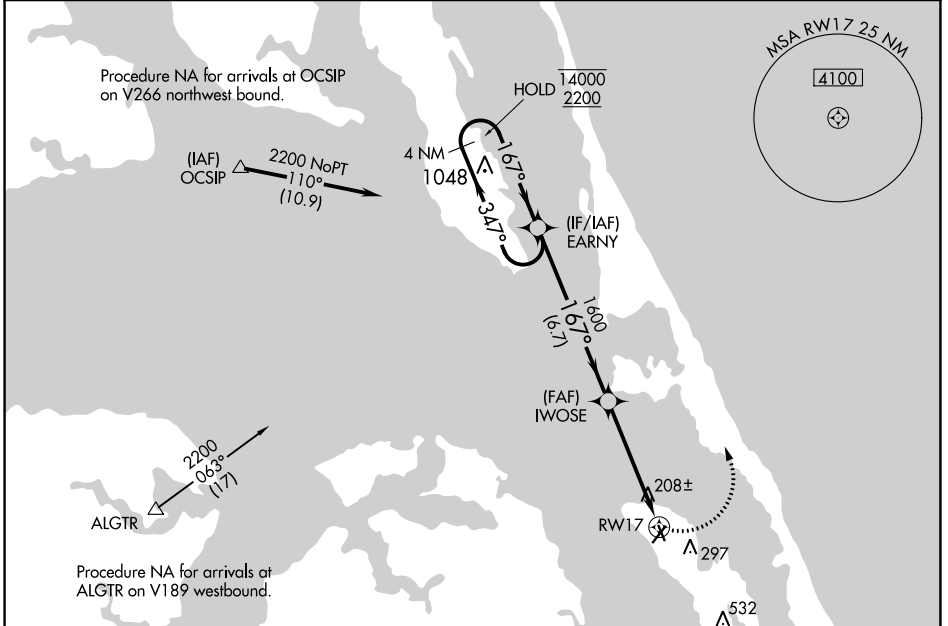
**⚠** Circling Rwy 23, 35 NA at night. Rwy 17 helicopter visibility reduction below 1 SM NA. Straight-in and Circling Rwy 17 NA at night.

MISSED APPROACH: Climbing left turn to 2200 direct EARNY and hold.

AWOS-3  
**128.275**

CHERRY POINT APP CON  
**124.725 350.35**

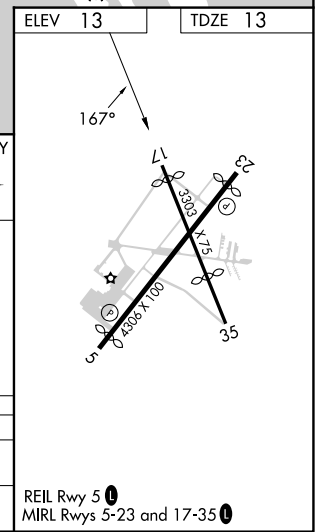
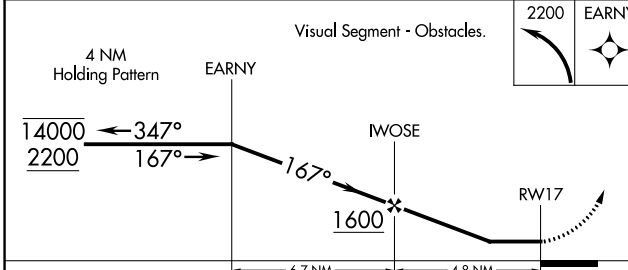
UNICOM  
**122.8(CTAF) 0**



SE-2, 22 FEB 2024 to 21 MAR 2024

SE-2, 22 FEB 2024 to 21 MAR 2024

ELEV	<b>13</b>	TDZE	<b>13</b>
------	-----------	------	-----------



CATEGORY	A	B	C	D
LNAV MDA	460-1	447 (500-1)	460-1 <sup>3</sup> / <sub>8</sub> 447 (500-1 <sup>3</sup> / <sub>8</sub> )	NA
<b>C</b> CIRCLING	600-1	587 (600-1)	600-1 <sup>1</sup> / <sub>2</sub> 587 (600-1 <sup>1</sup> / <sub>2</sub> )	NA

REIL Rwy 5 **0**  
MIRL Rwy 5-23 and 17-35 **0**

APP CRS	Rwy Idg	<b>4005</b>
<b>227°</b>	TDZE	<b>12</b>
	Apt Elev	<b>13</b>

# RNAV (GPS) RWY 23

DARE COUNTY RGNL (MQI)

RNP APCH - GPS.

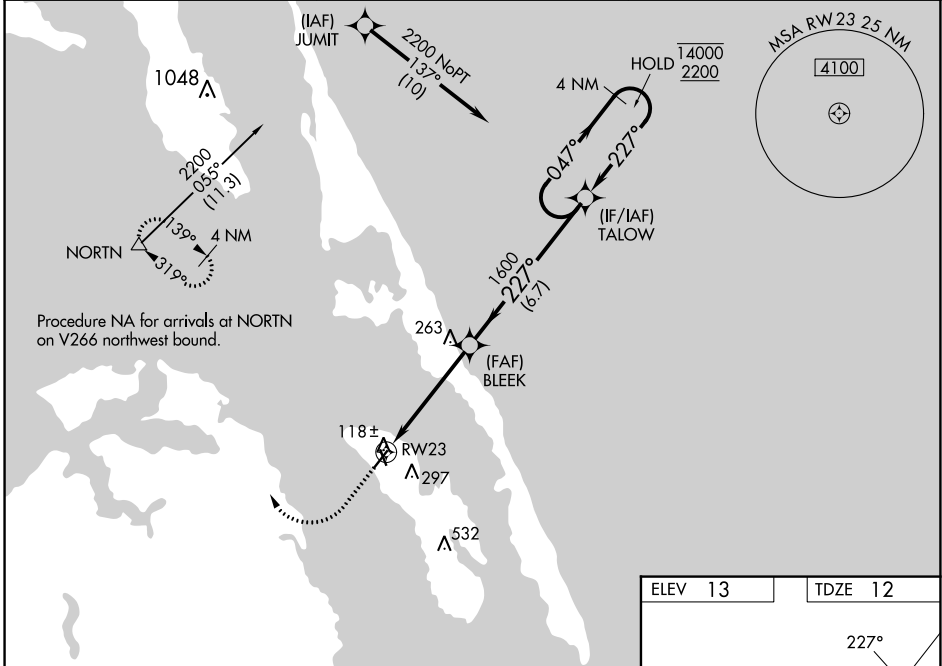
**⚠**  
**⚠** Circling Rwy 17, 35 NA at night. Rwy 23 helicopter visibility reduction below 1 SM NA. Straight-in/Circling Rwy 23 NA at night.

MISSED APPROACH: Climb to 600 then climbing right turn to 4000 direct NORTN and hold, continue climb-in-hold to 4000.

AWOS-3  
**128.275**

CHERRY POINT APP CON  
**124.725 350.35**

UNICOM  
**122.8(CTAF) 0**

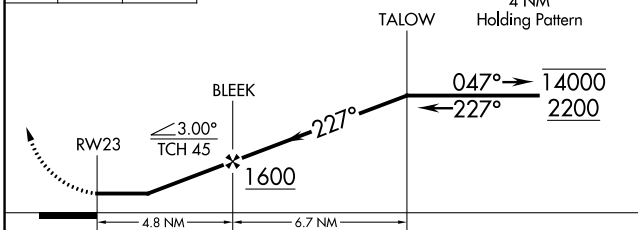


SE-2, 22 FEB 2024 to 21 MAR 2024

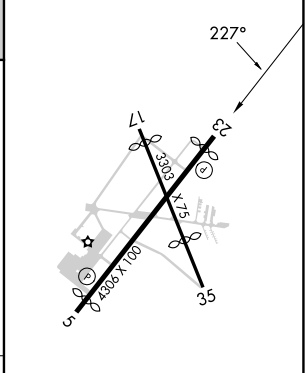
SE-2, 22 FEB 2024 to 21 MAR 2024

600	4000	NORTN

VGSI and descent angles not coincident (VGSI Angle 4.00/TCH 31).



ELEV 13	TDZE 12
---------	---------



CATEGORY	A	B	C	D
LNVA MDA	520-1 508 (600-1)		520-1 <sup>3</sup> / <sub>8</sub> 508 (600-1 <sup>3</sup> / <sub>8</sub> )	NA
<b>C</b> CIRCLING	600-1 587 (600-1)		600-1 <sup>1</sup> / <sub>2</sub> 587 (600-1 <sup>1</sup> / <sub>2</sub> )	NA

REIL Rwy 5 **0**  
MIRL Rwy 5-23 and 17-35 **0**

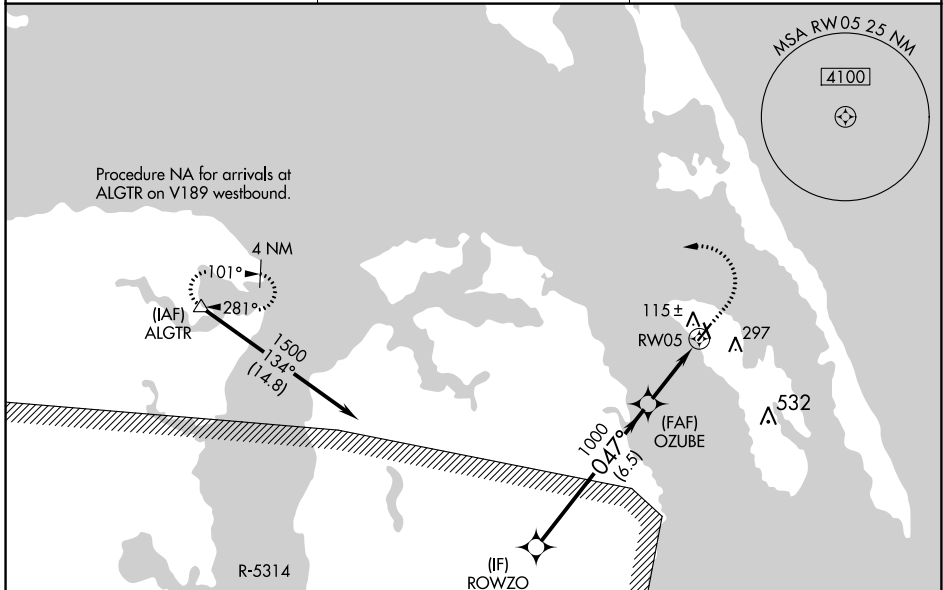
WAAS CH <b>72626</b> <b>W05A</b>	APP CRS <b>047°</b>	Rwy Idg TDZE <b>12</b> Apt Elev <b>13</b>	<b>4001</b>
--	------------------------	---	-------------

# RNAV (GPS) RWY 5

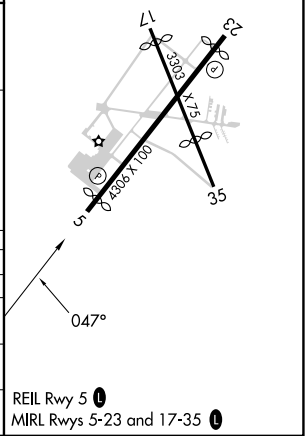
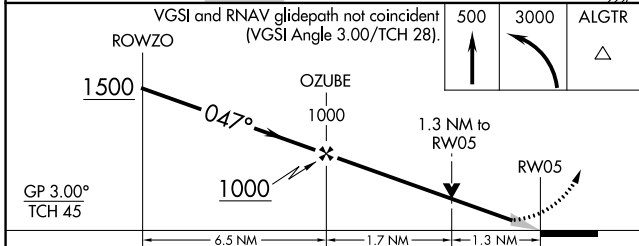
DARE COUNTY RGNL (MQI)

RNP APCH - GPS.		MISSED APPROACH: Climb to 500 then climbing left turn to 3000 direct ALGTR and hold.
⚠ Circling Rwy 17, 23, 35 NA at night. For uncompensated Baro-VNAV systems, LNAV/VNAV NA below -5°C or above 34°C.		

AWOS-3 <b>128.275</b>	CHERRY POINT APP CON <b>124.725 350.35</b>	UNICOM <b>122.8 (CTAF) 0</b>
--------------------------	---	---------------------------------



ELEV 13	TDZE 12
---------	---------



CATEGORY	A	B	C	D
LPV DA	262-3/4	250 (300-3/4)		NA
LNAV/VNAV DA	347-1	335 (400-1)		NA
LNAV MDA	460-1	448 (500-1)	460-1 3/8 448 (500-1 3/8)	NA
<b>C</b> CIRCLING	600-1	587 (600-1)	600-1 1/2 587 (600-1 1/2)	NA

REIL Rwy 5 0  
MIRL Rwy 5-23 and 17-35 0

SE-2, 22 FEB 2024 to 21 MAR 2024

SE-2, 22 FEB 2024 to 21 MAR 2024