

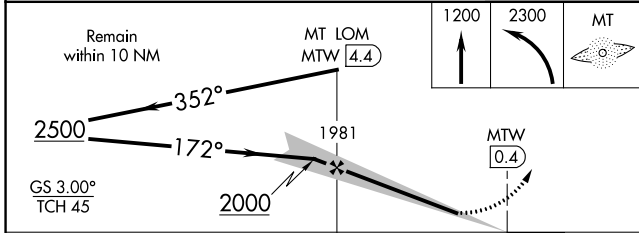
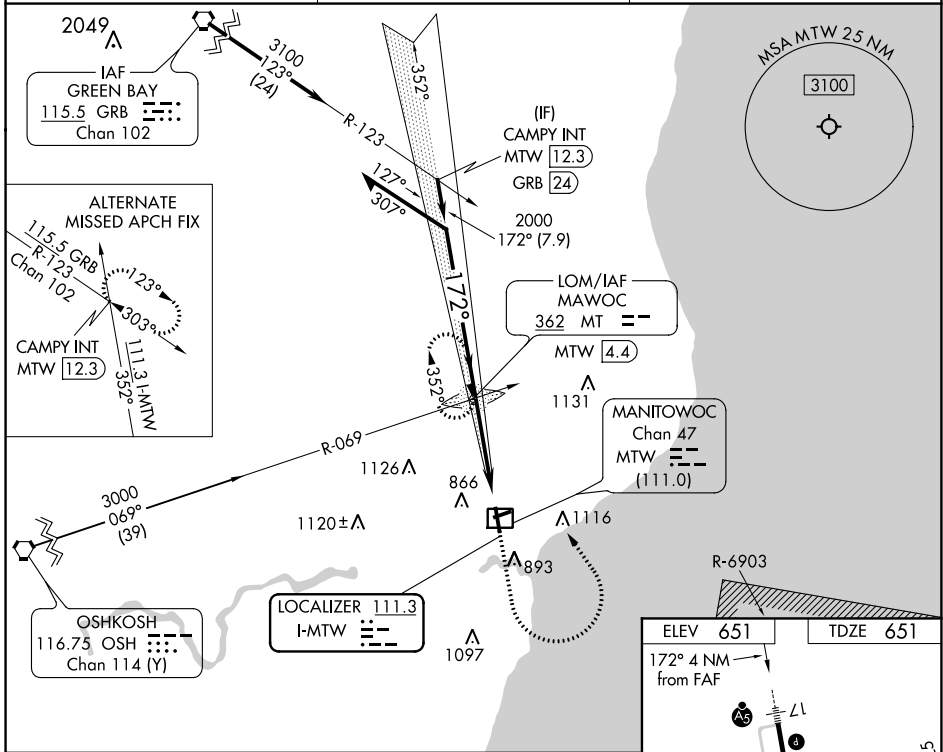
LOC I-MTW <b>111.3</b>	APP CRS <b>172°</b>	Rwy ldg TDZE Apt Elev	<b>5001</b> <b>651</b> <b>651</b>
---------------------------	------------------------	-----------------------------	---

# ILS or LOC RWY 17

MANITOWOC COUNTY (MTW)

ADF required.	MALSR	MISSED APPROACH: Climb to 1200 then climbing left turn to 2300 direct MAWOC LOM and hold.
For inop ALS, increase S-LOC 17 Cat C/D visibility to 1 3/8 SM.		

AWOS-3PT <b>123.775</b>	GREEN BAY APP CON* <b>120.2 338.2</b>	UNICOM <b>122.8 (CTAF)</b>
----------------------------	--	-------------------------------



CATEGORY	A	B	C	D	REIL Rwy 35 MIRL Rwy 7-25 HIRL Rwy 17-35 FAF to MAP 4 NM Knots: 60 90 120 150 180 Min:Sec: 4:00 2:40 2:00 1:36 1:20
S-ILS 17	851-1/2		200 (200-1/2)		
S-LOC 17	1160-1/2 509 (600-1/2)		1160-1 509 (600-1)		
CIRCLING	1200-1 549 (600-1)		1420-2 1/4 769 (800-2 1/4) 1480-2 3/4 829 (900-2 3/4)		

EC-3, 09 SEP 2021 to 07 OCT 2021

EC-3, 09 SEP 2021 to 07 OCT 2021

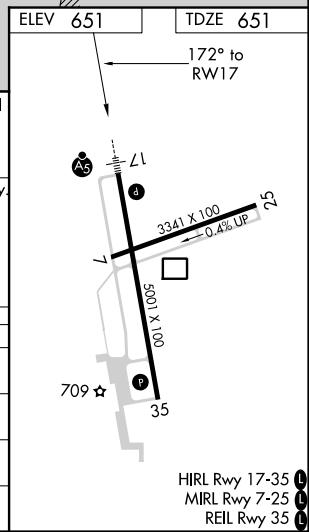
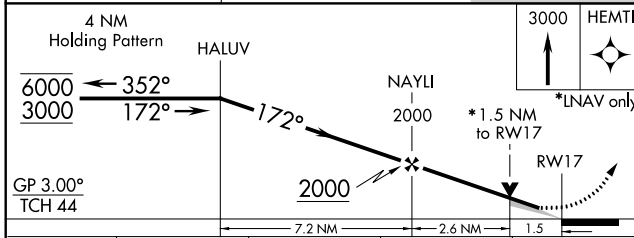
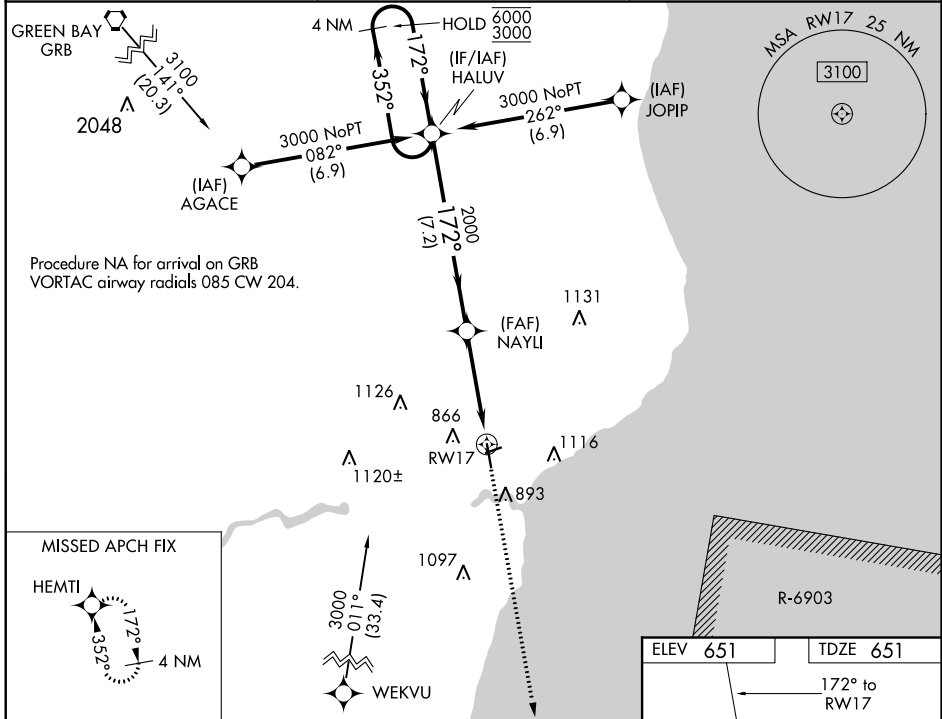
WAAS CH <b>63111</b> <b>W17A</b>	APP CRS <b>172°</b>	Rwy Idg TDZE Apt Elev	<b>5001</b> <b>651</b> <b>651</b>
--	------------------------	-----------------------------	---

# RNAV (GPS) RWY 17

MANITOWOC COUNTY (MTW)

RNP APCH.	<p>▼ For uncompensated Baro-VNAV systems, LNAV/VNAV NA below -16°C or above 54°C. For inop ALS, increase LNAV/VNAV all Cats visibility to 7/8 SM.</p>	<p>MALSR</p>	<p>MISSED APPROACH: Climb to 3000 direct HEMTI and hold.</p>
-----------	---	--------------	--

AWOS-3PT <b>123.775</b>	GREEN BAY APP CON * <b>120.2 338.2</b>	UNICOM <b>122.8 (CTAF)</b>
----------------------------	---	-------------------------------



CATEGORY	A	B	C	D
LPV DA		851-1/2	200 (200-1/2)	
LNAV/VNAV DA		942-1/2	291 (300-1/2)	
LNAV MDA	1180-1/2	529 (600-1/2)	1180-1	529 (600-1)
<b>C</b> CIRCLING	1200-1	549 (600-1)	1420-2 1/4 769 (800-2 1/4)	1480-2 3/4 829 (900-2 3/4)

EC-3, 09 SEP 2021 to 07 OCT 2021

EC-3, 09 SEP 2021 to 07 OCT 2021

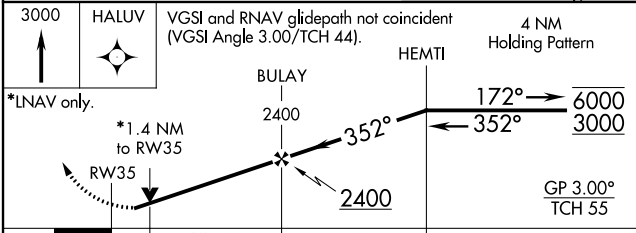
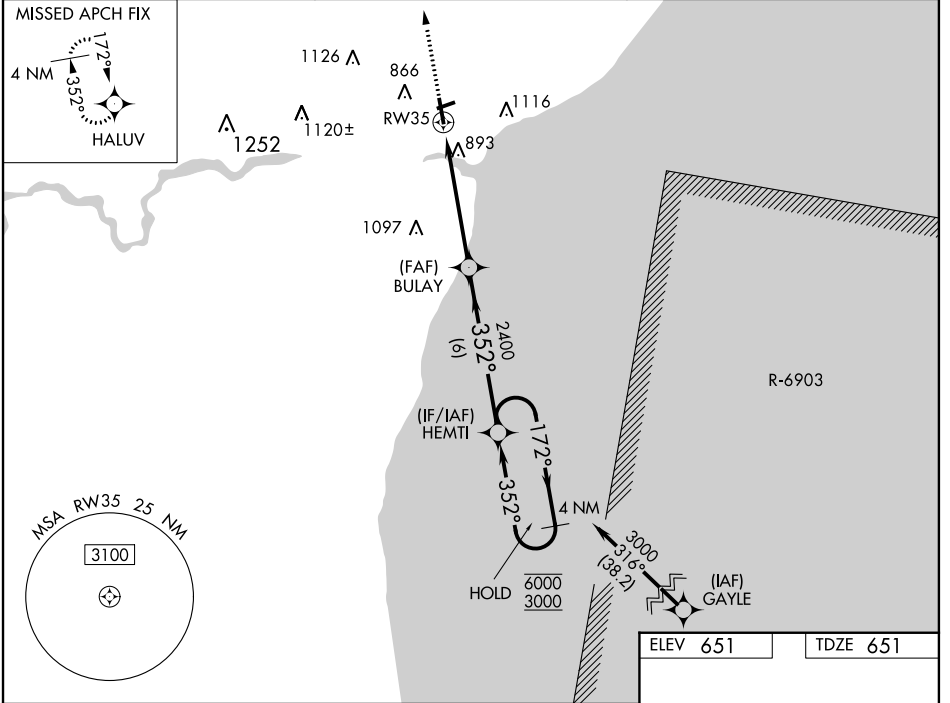
WAAS CH <b>82611</b> <b>W35A</b>	APP CRS <b>352°</b>	Rwy Idg TDZE Apt Elev	<b>5001</b> <b>651</b> <b>651</b>
--	------------------------	-----------------------------	---

# RNAV (GPS) RWY 35

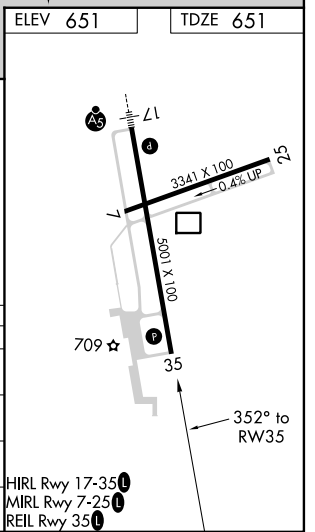
MANITOWOC COUNTY (MTW)

RNP APCH.	MISSED APPROACH: Climb to 3000 direct HALUV and hold.
-----------	---

AWOS-3PT <b>123.775</b>	GREEN BAY APP CON★ <b>120.2 338.2</b>	UNICOM <b>122.8 (CTAF) L</b>
----------------------------	--	---------------------------------



CATEGORY	A	B	C	D
LPV DA		957-7/8	306 (400-7%)	
LNAV/VNAV DA		1199-15/8	548 (600-1%)	
LNAV MDA	1160-1	509 (600-1)	1160-13/8	509 (600-13%)
<b>C</b> CIRCLING	1200-1	549 (600-1)	1420-2 1/4 769 (800-2 1/4)	1480-2 3/4 829 (900-2 3/4)



EC-3, 09 SEP 2021 to 07 OCT 2021

EC-3, 09 SEP 2021 to 07 OCT 2021