





JACKSONVILLE, FLORIDA

# RNAV (RNP) Y RWY 10

APCH CRS <b>096°</b>	Rwy Idg <b>8006</b> TDZE <b>21</b> Arpt Elev <b>23</b>
-------------------------	--

AL-209 (USN)

JACKSONVILLE NAS (TOWERS FLD) (KNIP)

**▽** \* When ALS inop increase CAT ABCD vis to 1 mile.

ALSF-1

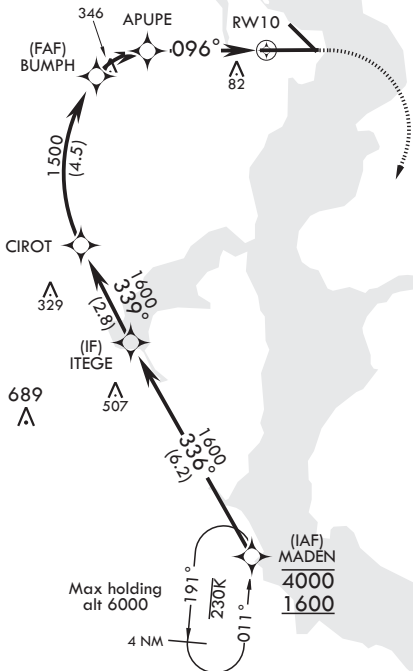
MISSED APPROACH: Climb to 600 then climbing right turn to 2000 direct MADEN and hold.



ATIS <b>124.35 290.425</b>	APP CON/DEP CON <b>127.775 377.075</b>	TOWER <b>125.15 (CTAF) 340.2</b>	GND CON <b>128.6 336.4</b>	CLNC DEL <b>134.775 353.675</b>	ASR/PAR
-------------------------------	---	-------------------------------------	-------------------------------	------------------------------------	---------



For uncompensated Baro-VNAV systems, procedure NA below -15°C (5°F) or above 54°C (130°F).



SE-3, 27 FEB 2020 to 26 MAR 2020

SE-3, 27 FEB 2020 to 26 MAR 2020

**GPS REQUIRED**  
**RF REQUIRED**

224

EMERG SAFE ALT 100 NM 2800

ITEGE 1600	CIROT 1600	BUMPH 1500	APUPE 1027	RWY 10	ELEV 23	TDZE 21
<p>GP 3.00° TCH 51</p> <p>339°</p> <p>1500</p> <p>1.5 NM</p> <p>3 NM</p> <p>096°</p>				<p>600</p> <p>2000</p> <p>MADEN</p>	<p>Rwy 10 Idg 8006'</p> <p>Rwy 14 Idg 3244'</p>	
CATEGORY	A	B	C	D	HIRL Rwy 10-28 HIRL Rwy 14-32 REIL Rwy 32	
RNP 0.30 DA*	390-%	369	(400-%)			

JACKSONVILLE, FLORIDA

30°14'N - 81°41'W

JACKSONVILLE NAS (TOWERS FLD) (KNIP)

Orig 10OCT19

# RNAV (RNP) Y RWY 10

# RNAV (RNP) Y RWY 28

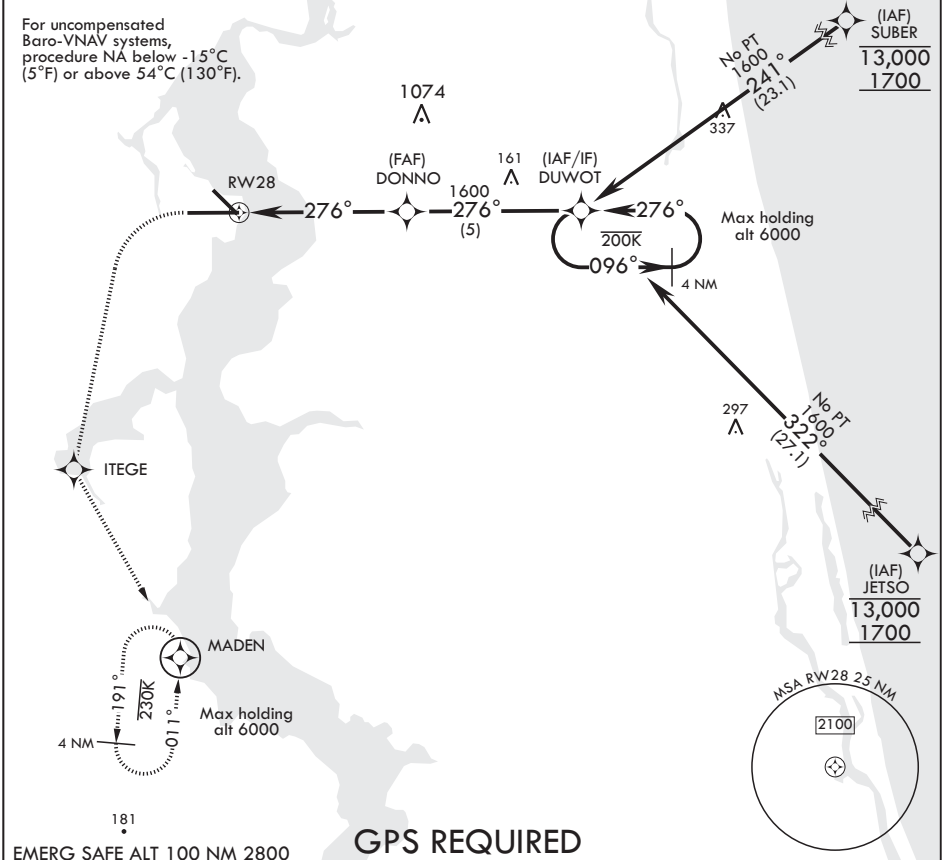
APCH CRS <b>276°</b>	Rwy Idg <b>9003</b> TDZE <b>13</b> Arpt Elev <b>23</b>
-------------------------	--

AL-209 (USN) JACKSONVILLE NAS (TOWERS FLD) (KNIP)

**V** \* When ALS inop increase CAT ABCD vis to 7/8 mile.

**SALS**  
**A2**  
MISSED APPROACH: Climb to 600 then climbing left turn to 2000 direct ITEGE, track 156° to MADEN and hold.

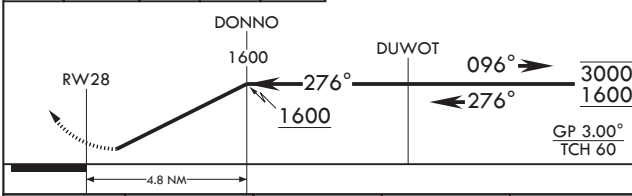
ATIS <b>124.35 290.425</b>	APP CON/DEP CON <b>127.775 377.075</b>	TOWER <b>125.15 (CTAF) 340.2</b>	GND CON <b>128.6 336.4</b>	CLNC DEL <b>134.775 0 353.675</b>	ASR/PAR
-------------------------------	---	-------------------------------------	-------------------------------	--------------------------------------	---------



SE-3, 27 FEB 2020 to 26 MAR 2020

SE-3, 27 FEB 2020 to 26 MAR 2020

600 $\uparrow$	2000 $\curvearrowright$	ITEGE $\Delta$	tr 156°	MADEN $\Delta$
----------------	-------------------------	----------------	---------	----------------



ELEV 23	TDZE 13
---------	---------

Rwy 10 ldg 8006'  
Rwy 14 ldg 3244'

276° to RW28

5938 x 200  $\Delta$

146  $\Delta$

9003 x 200  $\Delta$

TWR 87

BCN 167

H 0000

Lead-in lights

(A1) (B) (P) (A2)

CATEGORY	A	B	C	D
RNP 0.30 DA*	310-3/4	297	(300-3/4)	

HIRL Rwy 10-28  $\Delta$   
HIRL Rwy 14-32  $\Delta$   
REIL Rwy 32  $\Delta$

# RNAV (RNP) Y RWY 28



JACKSONVILLE, FLORIDA

# RNAV (GPS) Z RWY 28

WAAS CH 46924 W28A	APCH CRS 276°	Rwy ldg TDZE Arpt Elev	9003 13 23
--------------------------	------------------	------------------------------	------------------

AL-209 (USN)

JACKSONVILLE NAS (TOWERS FLD) (KNIP)

**⚠** \* When ALS inop, increase CAT ABCD to 7/8 mile.  
 \*\* When ALS inop, increase CAT AB vis to 1 mile, CAT CD vis to 1 1/8 miles.

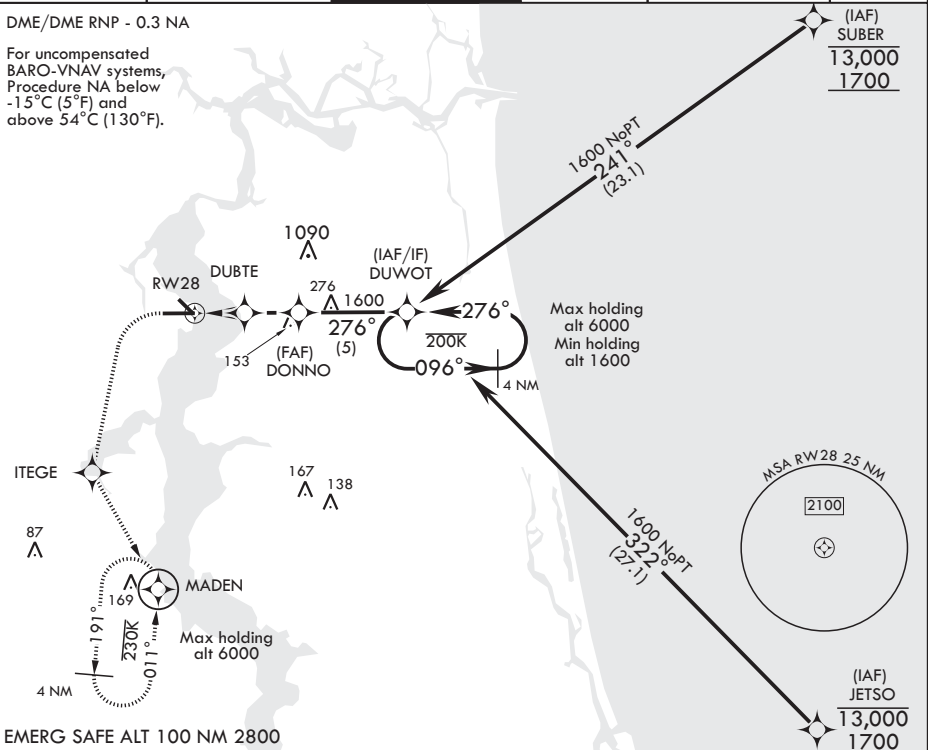
**SALS** 

**MISSED APPROACH:** Climb to 600 then climbing left turn to 2000 direct ITEGE, track 156° to MADEN and hold.

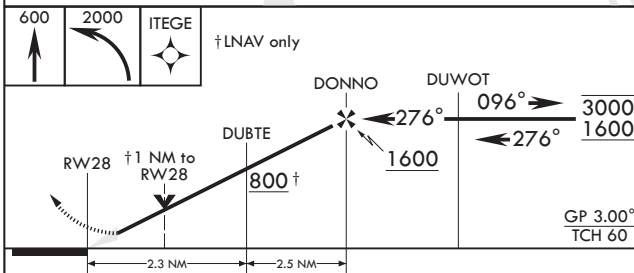
ATIS <b>124.35 290.425</b>	APP CON/DEP CON <b>127.775 377.075</b>	TOWER <b>125.15</b> (CTAF) <b>340.2</b>	GND CON <b>128.6 336.4</b>	CLNC DEL <b>134.775 0 353.675</b>	ASR/PAR
-------------------------------	---	--	-------------------------------	--------------------------------------	---------

DME/DME RNP - 0.3 NA

For uncompensated BARO-VNAV systems, Procedure NA below -15°C (5°F) and above 54°C (130°F).

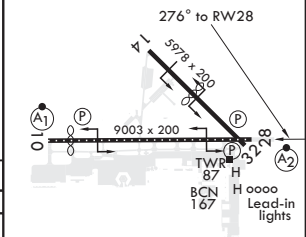


EMERG SAFE ALT 100 NM 2800



ELEV 23	TDZE 13
---------	---------

Rwy 10 ldg 8006'  
Rwy 14 ldg 3244'



CATEGORY	A	B	C	D
LPV DA	213-3/4	200	(200-3/4)	
LNAV/VNAV DA*	280-3/4 267 (300-3/4)	291-3/4 278 (300-3/4)	299-3/4 286 (300-3/4)	310-3/4 297 (300-3/4)
LNAV MDA**	400-3/4 387 (400-3/4)	420-3/8 387 (400-3/8)	560-1 1/2 537 (600-1 1/2)	800-2 1/2 777 (800-2 1/2)
<b>C</b> CIRCLING	500-1 477 (500-1)			

HIRL Rwy 10-28  
HIRL Rwy 14-32  
REIL Rwy 32

JACKSONVILLE, FLORIDA

30°14'N - 81°41'W

JACKSONVILLE NAS (TOWERS FLD) (KNIP)

Orig 10OCT19

# RNAV (GPS) Z RWY 28

SE-3, 27 FEB 2020 to 26 MAR 2020

SE-3, 27 FEB 2020 to 26 MAR 2020



# TACAN RWY 28

TACAN NIP Chan 19	APCH CRS <b>286°</b>	Rwy Idg TDZE Arpt Elev	<b>9003</b> <b>13</b> <b>23</b>
----------------------	-------------------------	------------------------------	---------------------------------------

AI-209 [USN] JACKSONVILLE NAS (TOWERS FIELD) (KNIP)

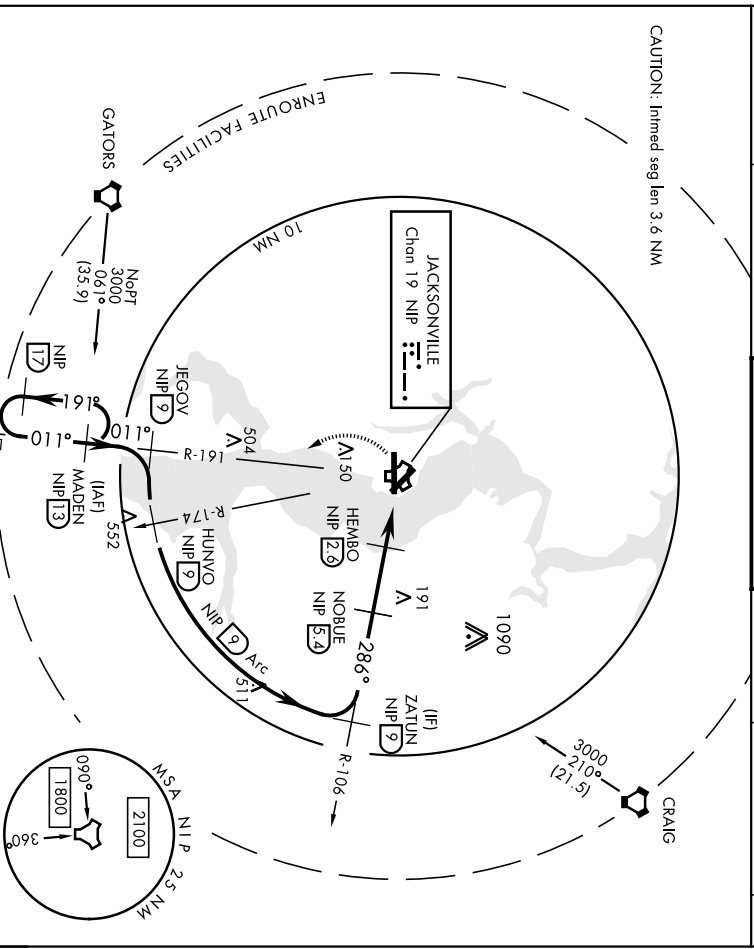
▼ \* When AIS hop, increase CAT AB vis to 1 mile, CAT CD vis to 1½ miles.

ATIS <b>124.35 290.425</b>	JACKSONVILLE APP CON <b>127.775 377.075</b>	NAVY JACKSONVILLE TOWER <b>125.15 (TAF) 340.2</b>	GND CON <b>128.6 336.4</b>	CLNC DEL <b>134.775 353.675</b>	ASR/ PAR
-------------------------------	--	--	-------------------------------	------------------------------------	-------------

SALSF  
A2

MISSED APPROACH: Climb to 2000 direct NIP TACAN and turn left outbound R-191 to MADEN and hold.

CAUTION: Inrmed seg len 3.6 NM

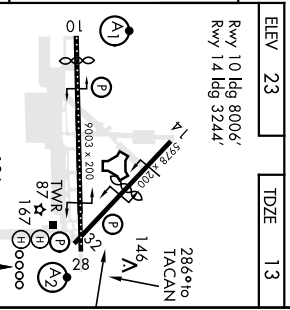


SE-3, 27 FEB 2020 to 26 MAR 2020

SE-3, 27 FEB 2020 to 26 MAR 2020

EMERG SAFE ALT 100 NM 2800

2000 NIP R-191	MADEN NIP R-191	MADEN NIP R-191
TACAN GRUEN L3	HEMBO NIP R-106	NOBLE NIP R-106
700	2100	1600
0.5	1.5 NM	2.8 NM



ELEV 23	TDZE 13
---------	---------

CATEGORY	A	B	C	D
S-28*	400-¾ 387 (400-¾)	400-7/8 387 (400-7/8)		
CIRCLING	500-1 477 (500-1)	560-1½ 537 (600-1½)	800-2½ 777 (800-2½)	

JACKSONVILLE, FLORIDA 30°14'N-81°41'W JACKSONVILLE NAS (TOWERS FIELD) (KNIP)

Amhd 2 10OCT19

# TACAN RWY 28