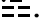
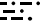
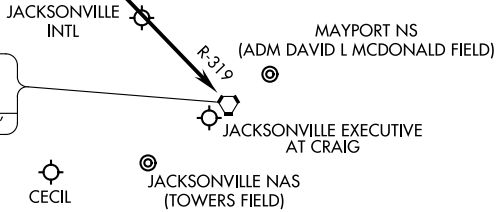


JACKSONVILLE APP CON
 127.0 269.9
 CECIL ATIS
 125.275
 CRAIG MUNI ATIS
 125.4
 JACKSONVILLE INTL D-ATIS
 125.85
 JACKSONVILLE NAS ATIS
 290.425
 MAYPORT NS ATIS★
 236.775

ALMA
 115.1 AMG 
 Chan 98
 N31°32.19'-W82°30.49'
 L-24, H-9-12

OHDEA
 N30°59.22'-W82°14.14'
**TURBOJET VERTICAL NAVIGATION
 PLANNING INFORMATION**
 Expect 12000.

CRAIG
 114.5 CRG 
 Chan 92
 N30°20.33'-W81°30.60'



SE-3, 27 FEB 2020 to 26 MAR 2020

SE-3, 27 FEB 2020 to 26 MAR 2020

NOTE: DME required.

NOTE: Chart not to scale.

ARRIVAL DESCRIPTION

From over ALMA VORTAC via AMG R-157 to OHDEA INT, then via CRG R-319 to CRG VORTAC. Expect radar vectors to final approach course.

HOTAR ONE ARRIVAL (RNAV)

JACKSONVILLE, FLORIDA

JACKSONVILLE APP CON
 119.0 127.0 269.9 292.15 (270°-090°)
 127.775 377.075 (181°-269°)
 124.9 308.4 (091°-180°)
 CECIL ATIS 125.275
 JACKSONVILLE EXECUTIVE AT CRAIG ATIS 125.4
 JACKSONVILLE INTL D-ATIS 125.85
 JACKSONVILLE NAS (TOWERS FIELD) ATIS 290.425
 MAYPORT NS (ADM DAVID L MCDONALD FIELD) ATIS * 236.775
 NORTHEAST FLORIDA RGNL ATIS 119.625

ARRIVAL ROUTE DESCRIPTION

BASLE TRANSITION (BASLE.HOTAR1)

From JABOR on track 191° to HOTAR.

LANDING JAX: From HOTAR on track 263° to YEJWO.

Expect radar vectors to an ILS or LOC final approach course.

LANDING NRB and CRG: From HOTAR on track 210° to LESVE, then on 213° heading or as assigned by ATC.

Expect radar vectors to final approach course.

LANDING SGJ: From HOTAR on track 202° to HABIK, then on 203° heading or as assigned by ATC. Expect radar vectors to final approach course.

LANDING VQQ and NIP: From HOTAR on track 202° to HEBIN, then on 253° heading or as assigned by ATC. Expect radar vectors to final approach course.

NOTE: YEJWO Transition-ATC assigned only.

JACKSONVILLE INTL

MAYPORT NS
(ADM DAVID L MCDONALD FIELD)

JACKSONVILLE EXECUTIVE
AT CRAIG

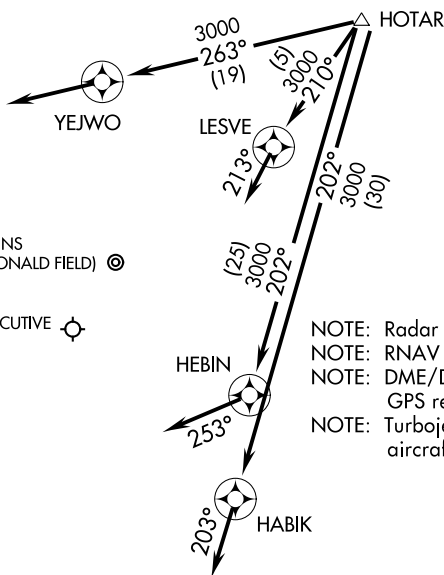
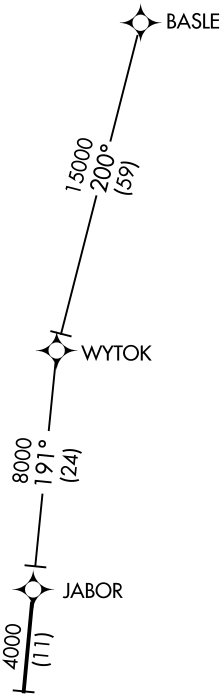
JACKSONVILLE NAS
(TOWERS FIELD)

CECIL

NORTHEAST FLORIDA
RGNL

NOTE: Radar required.
 NOTE: RNAV 1.
 NOTE: DME/DME/IRU or GPS required.
 NOTE: Turbojet and turboprop aircraft only.

NOTE: Chart not to scale.



SE-3, 27 FEB 2020 to 26 MAR 2020

SE-3, 27 FEB 2020 to 26 MAR 2020

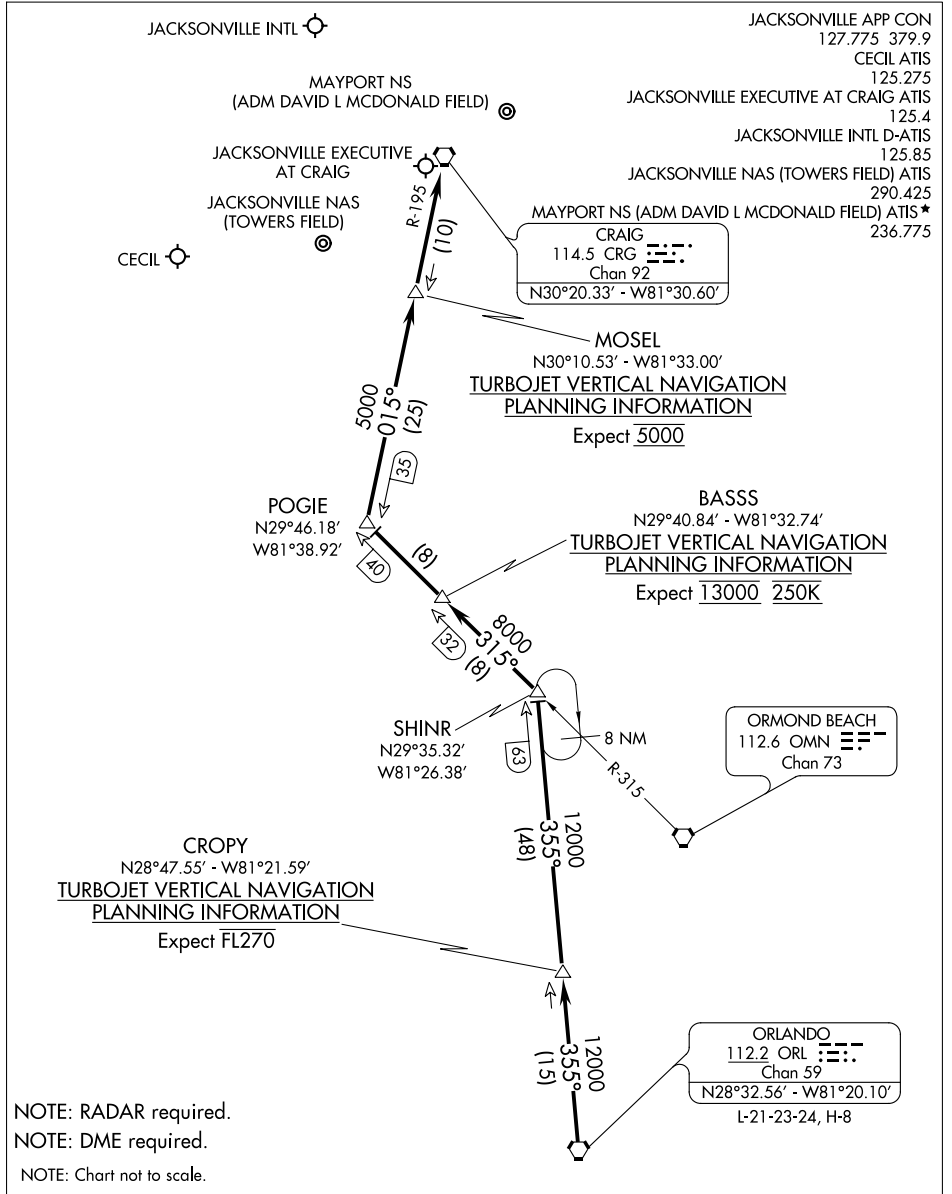
HOTAR ONE ARRIVAL (RNAV)

(HOTAR.HOTAR1) 17OCT13

JACKSONVILLE, FLORIDA

SE-3, 27 FEB 2020 to 26 MAR 2020

SE-3, 27 FEB 2020 to 26 MAR 2020

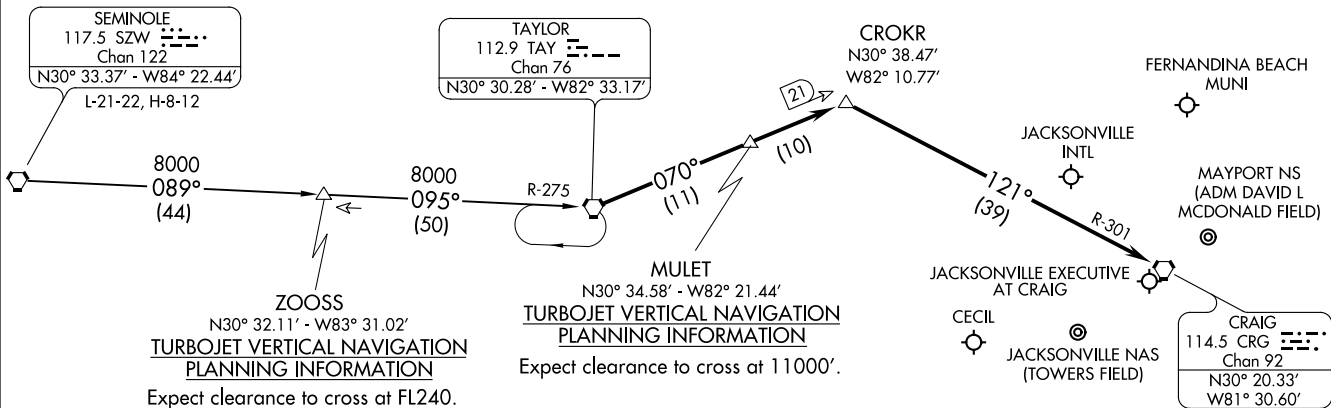


From over ORL VORTAC on ORL R-355 to SHINR, then on OMN R-315 to POGIE, then on CRG R-195 to CRG VORTAC. Expect RADAR vectors to final approach course after CRG VORTAC.

TAYLOR TWO ARRIVAL (TAY.TAY2)
25NOV04

SEMINOLE TRANSITION (SZW.TAY2): From over SZW VORTAC via SZW R-089 and TAY R-275 to TAY VORTAC. Thence. . . .

. . . .From over TAY VORTAC via TAY R-070 to CROKR INT, thence to the CRG VORTAC via CRG R-301. Expect radar vectors to final approach course after CROKR INT.



ZOOSS
N30° 32.11' - W83° 31.02'
TURBOJET VERTICAL NAVIGATION
PLANNING INFORMATION
Expect clearance to cross at FL240.

MULET
N30° 34.58' - W82° 21.44'
TURBOJET VERTICAL NAVIGATION
PLANNING INFORMATION
Expect clearance to cross at 11000'.

- JACKSONVILLE APP CON 127.0 292.15
- CECIL ATIS 125.275
- CRAIG MUNI ATIS 125.4
- JACKSONVILLE INTL D-ATIS 125.85
- JACKSONVILLE NAS ATIS 290.425
- MAYPORT NS ATIS ★ 236.775
- FERNANDINA BEACH AWOS-3 118.075

NOTE: DME Required.

NOTE: Chart not to scale.

JACKSONVILLE, FLORIDA

TAYLOR TWO ARRIVAL (TAY.TAY2)
18088

AL-5570 (FAA)

JACKSONVILLE, FLORIDA