

TACAN NKT	APCH CRS	Rwy Idg	7552
Chon 75	225°	TDZE	23
		Appt Elev	29

[USN]

CHERRY POINT MCAAS (CUNNINGHAM FLD) (KNKKT)

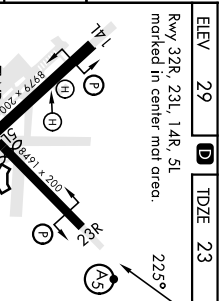
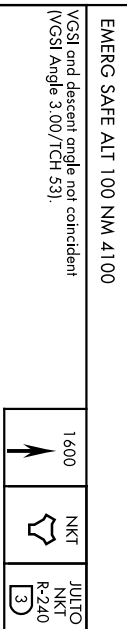
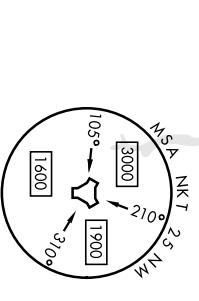
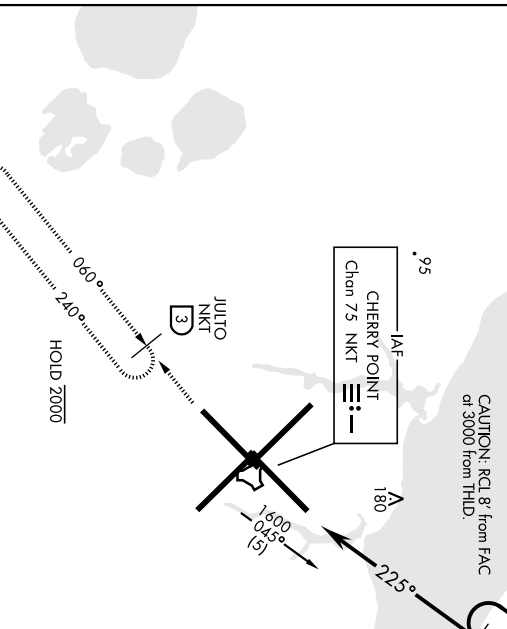
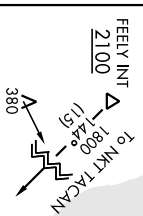
▲ * When A15 Inop, increase vis to 1 mile.
Max A15 speed 90 KIAS

MAISR 

MISSED APPROACH: Climb to 1600 direct NKT TACAN and fly NKT R-240 to JULTO and hold.

ATIS	(E)	119.75	360.775	(lbw 2600')
	(E)	132.575	299.6	(cr/Bw 2600')
	(W)	119.35	377.175	(N) 124.1 268.7

TOWER	121.3	340.2
GND CON	128.625	125.95
CINC DEL	239.025	316.125
ASR/ PAR		



CATEGORY	440-1/2	COPTER	417	(500-1/2)
S-23R *				

HRL all rwys
REIL Rwy 5L and 14R
Rwy 5L-23R ldg 7552'
Rwy 14R-32L lbg 7551'

CHERRY POINT, NORTH CAROLINA 34°54'N-76°53'W CHERRY POINT MCAAS (CUNNINGHAM FLD) (KNKKT)
Amtd 8 02NOV23
COPTER TACAN RWY 23R

HI-TACAN X RWY 32L

CERRY POINT, NORTH CAROLINA

TACAN NKT Chan 75	APCH CRS 334°	Rwy Idg 7551
		TDZE 26
		Arpt Elev 29

[USN]

CERRY POINT MCAS (CUNNINGHAM FLD) (KNKT)

▼ * When AIS Inop, increase vis to 1 1/2 miles.

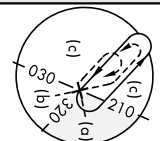
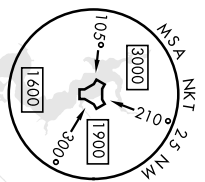
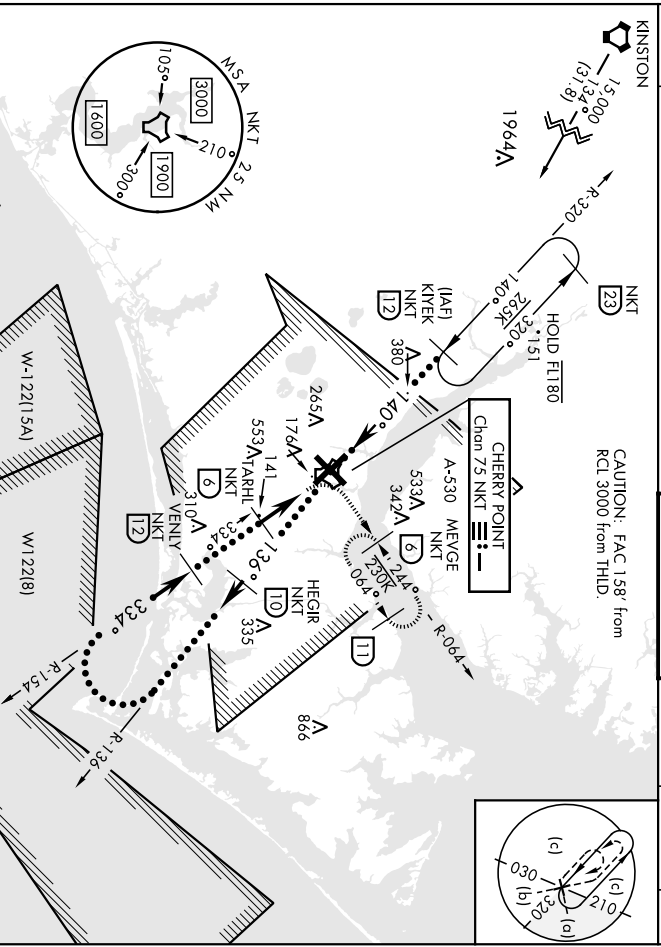
ALSIF-1
[A1]

MISSED APPROACH: Climbing right turn to 1600, intercept NKT R-064 to MEVGE and hold.

ATIS 127.475 244.875	[E] 119.75 [E] 132.575 [W] 119.35	APP CON 360.775 (bob 2600') 299.6 (at/bw 2600') 377.475 (N) 124.1 268.7
--	--	--

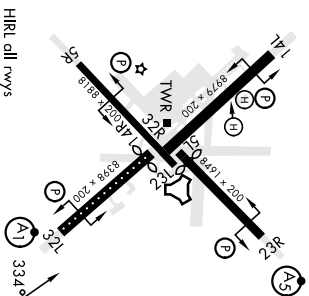
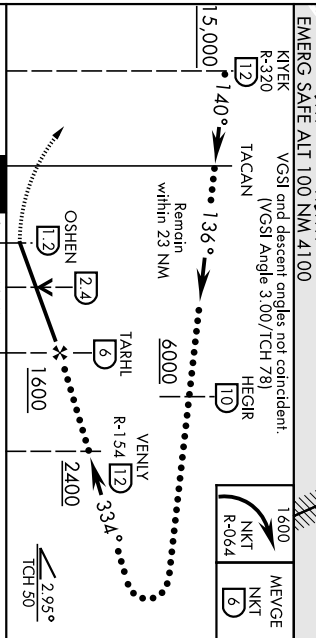
TOWER 121.3 340.2

GND CON 128.625 239.025	CINC DEL 125.95 316-125	ASR/ PAR
---	---	-------------



ELEV 29	TDZE 26
----------------	----------------

Rwy 32R, 23L, 14R, 5L marked in center md. area.



CATEGORY	C	D	E
S-32L *	460-3/4	435 (500-3/4)	
DIRCLING	580-1 1/2 551 (600-1 1/2)	580-2 551 (600-2)	700-2 1/2 671 (700-2 1/2)

HIRL all rws
REIL Rwy 5L and 14R
Rwy 5L-23R Idg 7552'
Rwy 14R-32L Idg 7551'

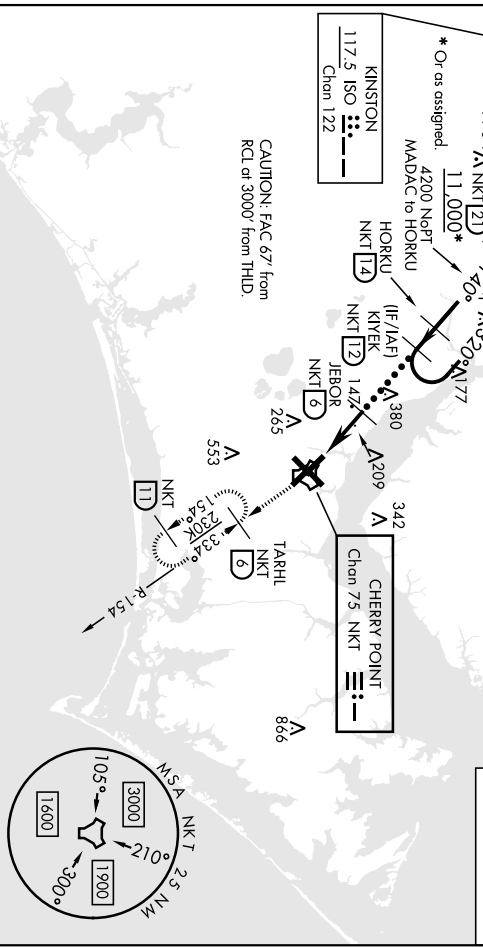
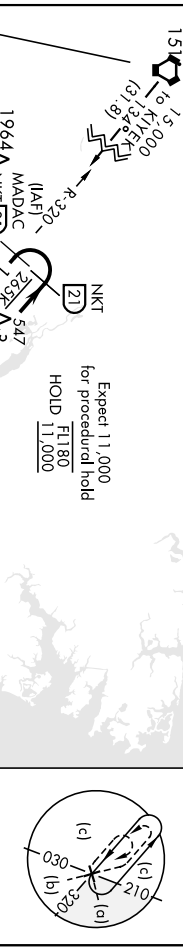
CERRY POINT, NORTH CAROLINA 34° 54'N-76° 53'W CERRY POINT MCAS (CUNNINGHAM FLD) (KNKT)
Amdt 7 02NOV23 HI-TACAN X RWY 32L

HI-TACAN Y RWY 14L

CHERRY POINT, NORTH CAROLINA

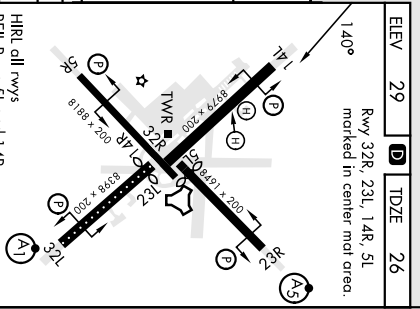
TACAN NKT Chan 75	APCH CRS 140°	Pub./Idg R-154	APR 29	[USN]	CHERRY POINT MCAS (CUNNINGHAM FLD) (KNKKT)
					MISSED APPROACH: Climb to 1600 to NKT TACAN and fly NKT R-154 to TARHL and hold.

ATIS 127.475 244.875	APP CON 119.75 132.575 119.35	360.775 (E) (obv 2600') 299.6 (E) (tr/1blw 2600') 377.175 (W) 124.1 268.7 (N)	TOWER 121.3 340.2	GND CON 128.625	CLNC DEL 125.95	ASR/ PAR 239.025
----------------------------	--	---	----------------------	--------------------	--------------------	------------------------



EMERG SAFE ALT 100 NM 4100		ELEV 29		IDZE 26	
*Or as assigned		Rwy 32R, 23L, 14R, 5L marked in center mat area.			
[2] FL 180* 11,000*	320°	[12] KIVEK	1600	[NKT]	TARHL NKT R-154
[14] HOKKU	140°	[6] JEBOR	3000	[6]	VGSI and descent angle not coincident, (VGSI Angle 3.00/TCH 71)
[14] HOKKU	4200	[3] JOGTA	1600	[2]	TACAN
[6] JEBOR	3000	[2] TCH 50	3,290°	[2]	
[6] JEBOR	1600	[2] TCH 50	41NM	[2]	
[6] JEBOR	0.4	[2] TCH 50		[2]	

CATEGORY	C	D	E
S-14L	500-136	474	(500-136)
[C] CIRCLING	580-1½ 551 (600-1½)	580-2 551 (600-2)	700-2½ 671 (700-2½)



CHERRY POINT, NORTH CAROLINA 34° 54' N - 76° 53' W CHERRY POINT MCAS (CUNNINGHAM FLD) (KNKKT)
Amdt 9 02NOV23

HI-TACAN Y RWY 14L

HI-TACAN Y RWY 32L

CHERRY POINT, NORTH CAROLINA

TACAN NKT Chan 75	APCH CRS 334°	Rwy Idg 7551
----------------------	------------------	-----------------

[USN]

CHERRY POINT MCAS (CUNNINGHAM FLD) (KNKT)

▲ * When ALS inop, increase vis to 1 1/8 miles.

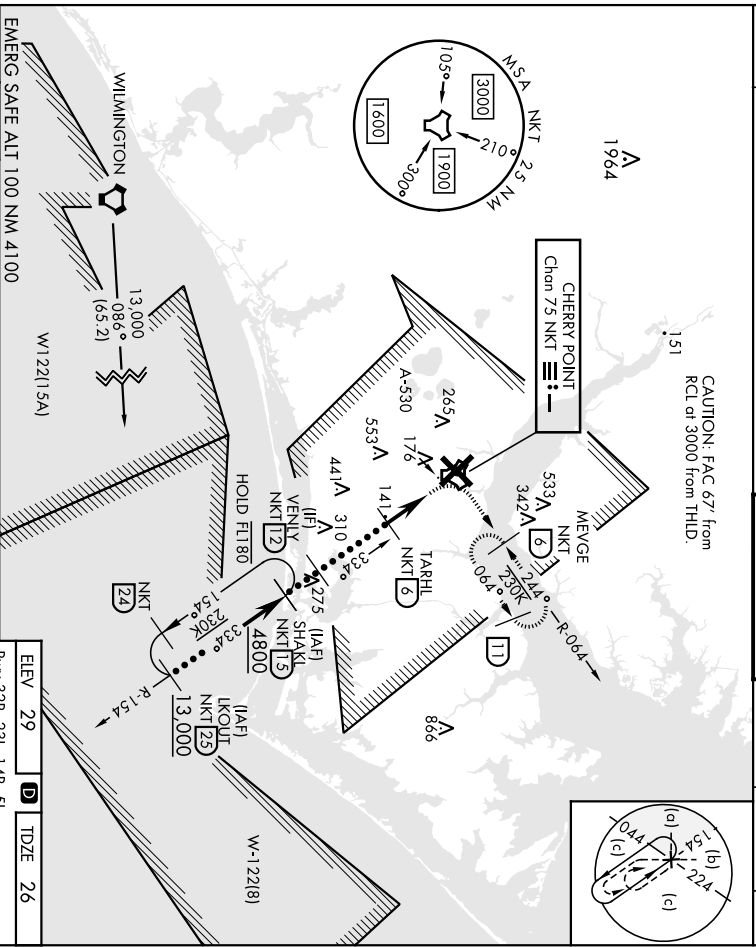
ALSF-1
[A1]

MISSED APPROACH: Climbing right turn to 1600, intercept NKT R-064 to MEVGE and hold.

ATIS	(E) 119.75	APP CON	360.775 (obv 2600')
127.475	(E) 132.575	TOWER	121.3 340.2
244.875	(W) 119.35	GND CON	128.625
		CINC DEL	125.95
		ASR/ PAR	316-125

TOWER	121.3 340.2
GND CON	128.625
CINC DEL	125.95
ASR/ PAR	316-125

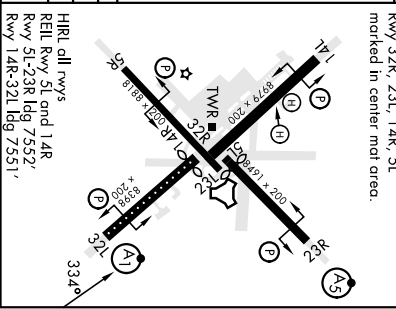
CAUTION: FAC 67' from RCL at 3000 from THLD.



ELEV 29	D	IDZE 26
---------	---	---------

Rwy 32R, 23L, 14R, 5L marked in center mat area.

EMERG SAFE ALT 100 NM 4100			
1600	MEVGE	(VGS) and descent angle not coincident:	
NKT R-064	NKT 6	(VGS) Angle 3.00/TCH 78)	
CATEGORY	C	D	E
S-32L*	460-3/4	435	[500-3/4]
CIRCLING	580-1 1/2	580-2	700-2 1/2
	551 (600-1 1/2)	551 (600-2)	671 (700-2 1/2)



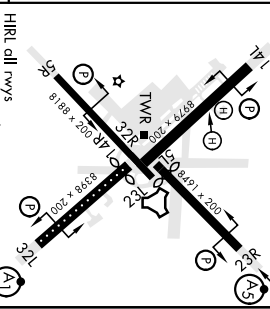
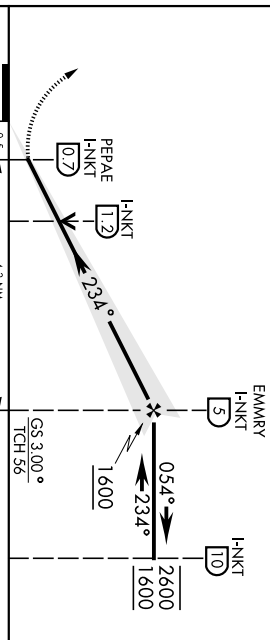
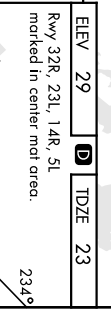
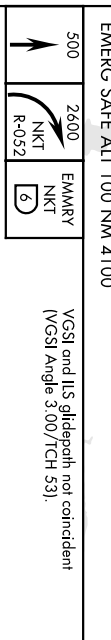
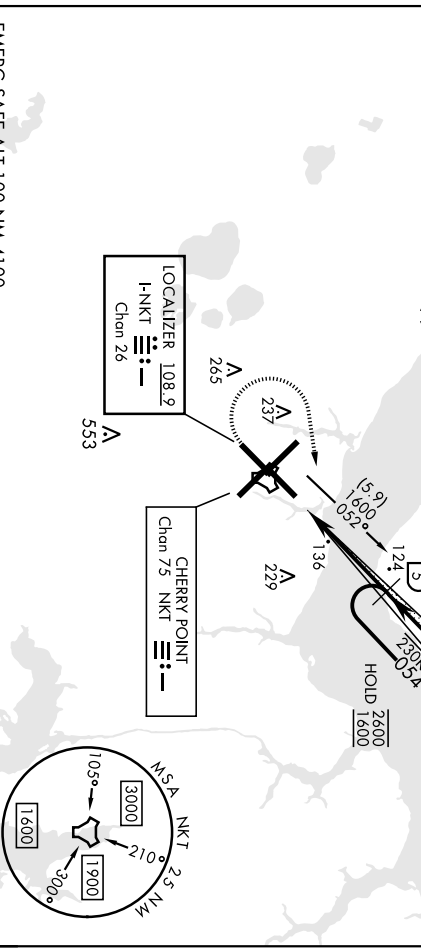
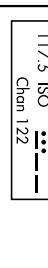
HIRL all rws
REIL Rwy 5L and 14R
Rwy 5L-23R Idg 7552'
Rwy 14R-32L Idg 7551'

HI-TACAN Y RWY 32L

ILS or LOC/DME Rwy 23R

LOC/DME H-NKT 108.9 Chan 26	APCH CRS 234°	Rwy Idg TDZE Appt Elev 23 29	[USN]	CHERRY POINT MCAS (CUNNINGHAM FLD) (KNKT)
TACAN required		MAISR A5 MISSED APPROACH: Climb to 500, then climbing right turn to 2600 via NKT TACAN R-052 to EMARY and hold. Continue climb in hold to 2600.		
** When ALS inop, increase vis to 3/4 mile. ** When ALS inop, increase vis to 1 mile.				

ATIS 127.475 244.875	(E) (E) (W)	119.75 132.575 119.35	APP CON 360.775 (abv 2600') 299.6 (at/Blw 2600') 377.175 (N) 124.1 268.7	TOWER 121.3 340.2	GND CON 128.625 239.025	CINC DEL 125.95 316.125	ASR/ PAR
--	-------------------	--	---	-----------------------------	---	---	-------------



CATEGORY	A	B	C	D
S-ILS 23R*	223-1/2		200	
S-LOC 23R**	400-1/2	377 (400-3/2)	400-5/8	377 (400-3/4)
CIRCLING	580-1	551 (600-1)	580-1/2	580-2
			551 (600-1/2)	551 (600-2)

CHERRY POINT, NORTH CAROLINA 34° 54'N-76° 53'W CHERRY POINT MCAS (CUNNINGHAM FLD) (KNKT)
 Ancl 1 02NOV23 ILS or LOC/DME Rwy 23R

RNAV (GPS) RWY 14L

WAAS	APCH CRS	Rwy Idg	8979
Chn 41117	144°	TDZE	26
W14A		Appt Elev	29

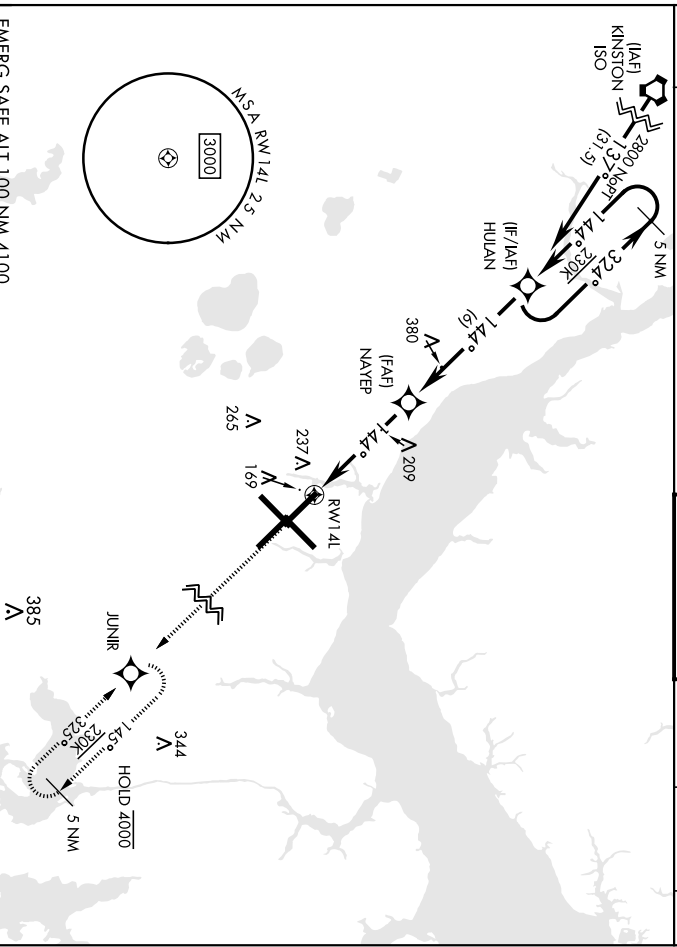
[USN]

CHERRY POINT MCAS (CUNNINGHAM FLD) (KNKKT)

RNP APCH
 ▲ For uncompeated Baro-VNAV systems: LNAV/VNAV
 NA below -1.5°C (5°F) or above 54°F (12.9°F).

MISSED APPROACH: Climb to 600 then climbing right turn to 2800 direct JUNIR and hold.

AIIS	APR CON	TOWER	GND CON	CINC DEL	ASR/ PAR
127.475	119.75 (E)	121.3	128.625	125.95	
244.875	132.575 (E)	340.2	239.025	316-125	
	119.35 (M)				
	377.175 (N)				
	124.1 268.7				



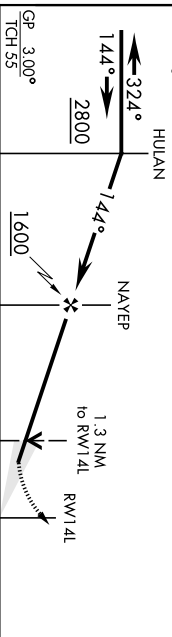
EMERG SAFE ALT 100 NM 4100

VGSI and RNAV glidepath not coincident
 (VGSI Angle 3.00°/TCH 711).



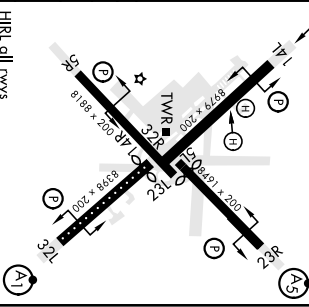
ELEV	29	D	TDZE	26
------	----	---	------	----

Rwy 32R, 23L, 14R, 5L marked in center most area.



CATEGORY	A	B	C	D
LPV DA	226-¾	200	(200-¾)	
LNAV/ VNAV DA	301-7/8	312-7/8	320-7/8	331-7/8
	275 (300-¾)	286 (300-¾)	294 (300-¾)	305 (400-¾)
LNAV MDA	500-1	474 (500-1)	500-1 ¾	474 (500-1 ¾)

Ⓞ CIRCLING	580-1	551 (600-1)	580-1 ½	580-2
		551 (600-1 ½)	551 (600-2)	



CHERRY POINT, NORTH CAROLINA 34° 54' N - 76° 53' W CHERRY POINT MCAS (CUNNINGHAM FLD) (KNKKT)

Archt 5 02NOV23

RNAV (GPS) RWY 14L

RNAV (GPS) RWY 23R

WAA5	APCH CRS	Rwy Idg	7552
Chen 51523	235°	TDZE	23
W23A		Appt Elev	29

[USN]

CHERRY POINT MCAS (CUNNINGHAM FLD) (KNKKT)

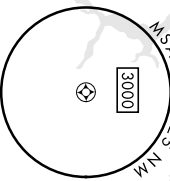
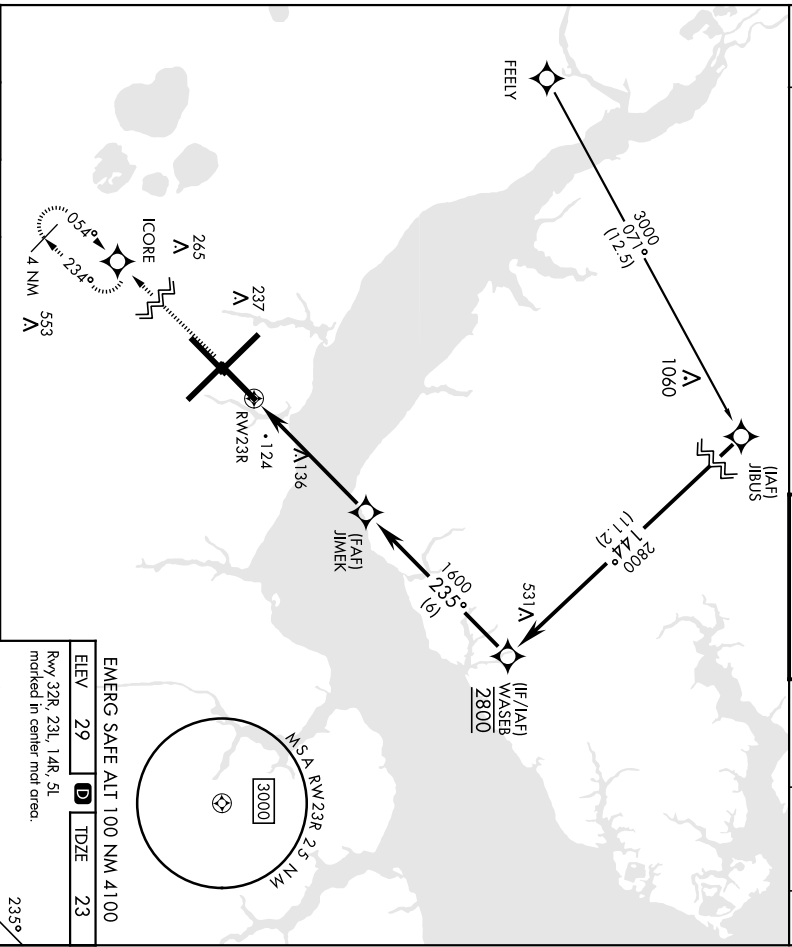


Missed Approach: Climb to 600 then climbing left turn to 2600 direct ICORE and hold. Continue climb in hold to 2800.

AIIS	APR CON	
127.475	360.775 (lby 2600')	
244.875	299.6 (ar/blw 2600')	
(E) 119.75	377.175 (N) 124.1 268.7	
(E) 132.575		
(W) 119.35		

TOWER	121.3 340.2
-------	-------------

GND CON	128.625	CINC DEL	125.95	ASR/ PAR	239.025 316.125
---------	---------	----------	--------	----------	-----------------

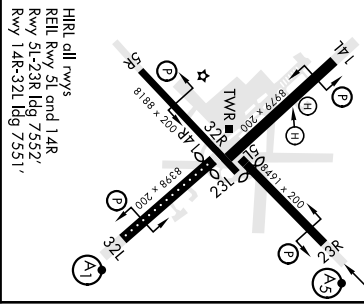


EMERG SAFE ALT 100 NM 4100

ELEV	29	TDZE	23
------	----	------	----

Rwy 32R, 29L, 14R, 5L marked in center mt area.

600	2600	ICORE		
		1.0 NM		
		RW23R to RW23R		
		JIMFK	235°	
		WASEB	2800	
		GP 3.00°		
		TCH 55		
CATEGORY	A	B	C	D
LPV*	223-1/2	200	(200-1/2)	
RNAV/VNAV DA*	400-5/8	377	(400-3/4)	
RNAV MDA**	400-1/2	377	(400-1/2)	
	400-5/8	377	(400-3/4)	
CIRCLING	580-1	551	(600-1)	580-2 580-1
			551 (600-1/2)	551 (600-2)



HIRL all rwys
REIL Rwy 5L and 14R
Rwy 5L-23R ldg 7552'
Rwy 14R-32L ldg 7551'

CHERRY POINT, NORTH CAROLINA 34° 54' N - 76° 53' W CHERRY POINT MCAS (CUNNINGHAM FLD) (KNKKT)
Amdt 5 02NOV23 RNAV (GPS) RWY 23R

RNAV (GPS) RWY 32L

WAS	APCH CRS	Rwy/Ldg	7551
Chon 54304	325°	TDZE	26
W32A		Appt Elev	29

[USN]

CHERRY POINT MCAS (CUNNINGHAM FLD) (KNKT)

▲ **When AIS inop, increase vis to 3/4 mile
 ***When AIS inop, increase vis to 1 mile,
 CAT CD vis to 1 1/4 miles.

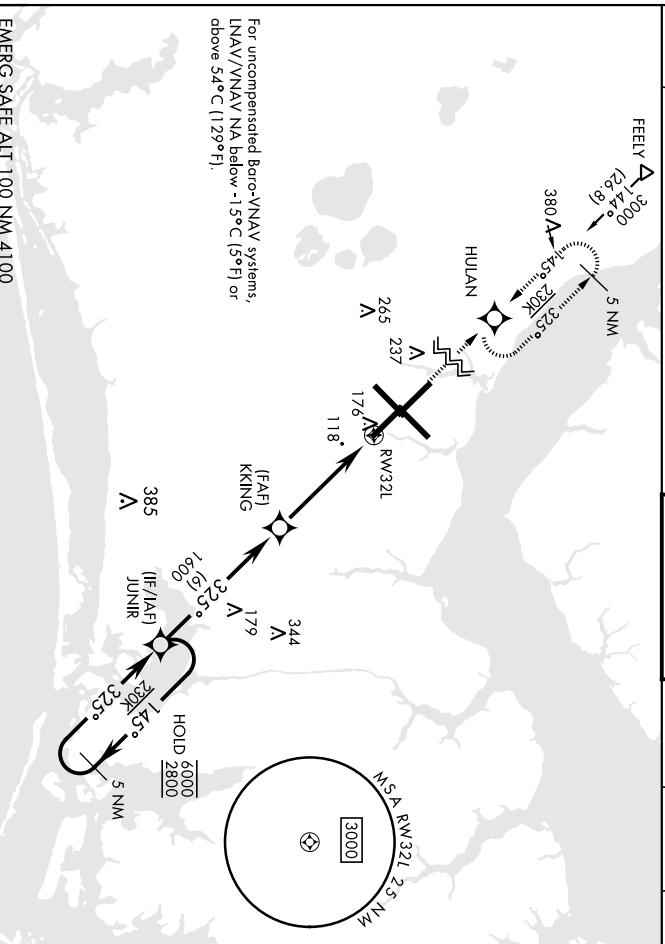
ALSF-1

MISSED APPROACH: Climb to 600 then climbing right turn to 2800 direct HULAN and hold.

ATIS	APP CON	
127.475 (E)	360.775 (bbr 26001)	
124.875 (W)	299.6 (br/blw 26001)	
	377.175 (N) 124.1 268.7	

TOWER	
121.3	340.2

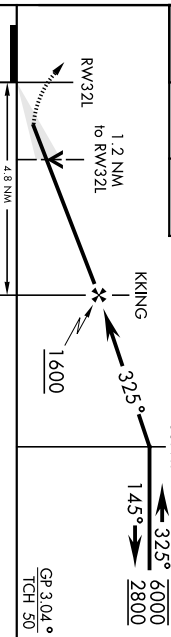
GND CON	CINC DEL	ASR/ PAR
128.625	125.95	316.125
239.025		



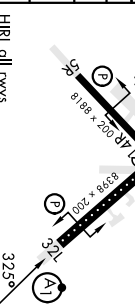
For uncompensated Baro-VNAV systems, LNAV/VNAV NA below -1.5°C (15°F) or above 54°C (129°F).

EMERG SAFE ALT 100 NM 4100

600	2800	HULAN	VGS1 and RNAV glidepath not coincident. (VGS1 Angle 3.00/TCH 78)
			5 NM Holding Pattern



ELEV	29	TDZE	26
	Rwy 32R, 23L, 14R, 5L marked in center mt area.		



CATEGORY	A	B	C	D
LPV DA*	225-1/2	200	(200-1/2)	
LNAV/ **	400-3/8	375	(400-3/8)	
VNAV DA				
LNAV MDA ***	460-1/2	435 (500-1/2)	460-3/4	435 (500-3/4)
◻ CIRCLING	580-1	551 (600-1)	580-2	580-2
		551 (600-1 1/2)	551 (600-2)	

HRL all rwy's
 REL Rwy 5L and 14R
 Rwy 5L-23R ldg 7552'
 Rwy 14R-32L ldg 7551'

CHERRY POINT, NORTH CAROLINA 34° 54' N - 76° 53' W CHERRY POINT MCAS (CUNNINGHAM FLD) (KNKT)
 Amdt 8 02NOV23

RNAV (GPS) RWY 32L

CERRY POINT, NORTH CAROLINA

RNAV (GPS) RWY 5R

24025

WAS	APCH CRS	Rwy/Idg	8198
Chan 71199	054°	TDZE	27
W05A		Appt Elev	29

[USN]

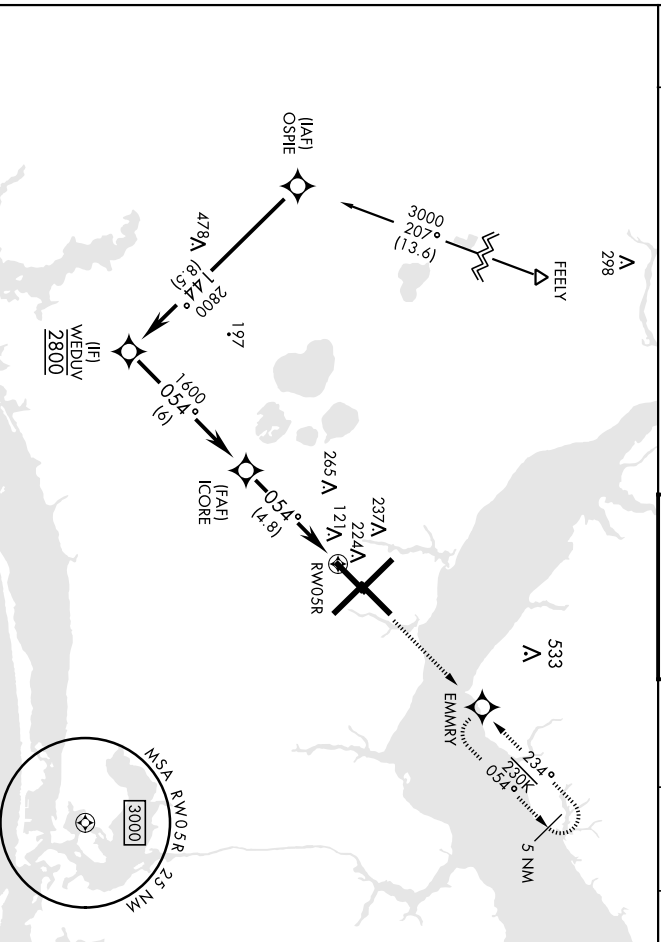
CERRY POINT MCAS (CUNNINGHAM FLD) (KNKT)

RNP APCH
 ▼ For uncompensated Baro-VNAV systems, INAV/VNAV
 NA below -1.5°C (5°F) or above 54°C (129°F).

ATIS	(E)	119.75	360.775	(abh 2600')
	(E)	132.575	299.6	(dt/bw 2600')
	(W)	119.35	377.175	(N) 124.1 268.7

TOWER	121.3	340.2
-------	--------------	--------------

GND CON	128.625	125.95
CLNC DEL	239.025	316.125
ASR/ PAR		

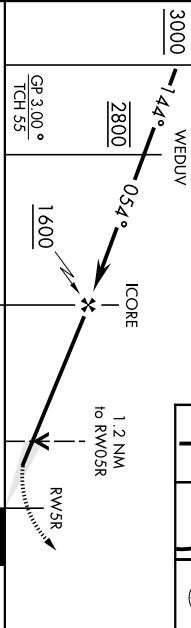


EMERG SAFE ALT 100 NM 4100

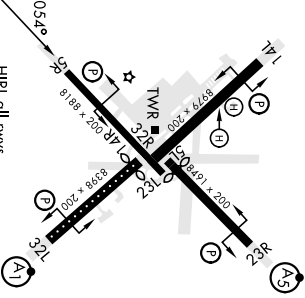
VGSI and RNAV glidepath not coincident
 (VGSI Angle 3.30° TCH 73).



ELEV	29	D	TDZE	27
Rwy 32R, 23L, 14R, 5L marked in center mat area.				



CATEGORY	A	B	C	D
LPV DA		226-¾	200	(200-¾)
RNAV/ VNAV DA		398-1	372	(400-1)
LNAV MDA	480-1	454	(500-1)	480-1¾ 454 (500-1¾)
CIRCLING	580-1	551	(600-1)	580-2
		551	(600-1½)	551 (600-2)



HRL all rmys
 REL Rwy 5L and 14R
 Rwy 5L-23R Idg 7557'
 Rwy 14R-32L Idg 7551'

CERRY POINT, NORTH CAROLINA **34° 54' N - 76° 53' W** CERRY POINT MCAS (CUNNINGHAM FLD) (KNKT)

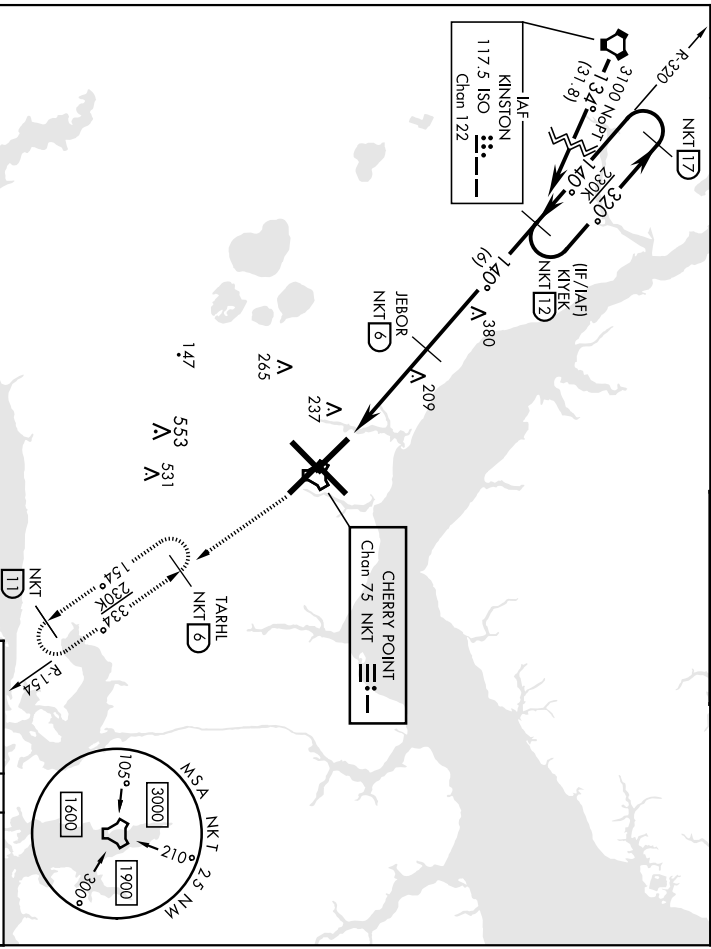
Amdt 6 02NOV23

RNAV (GPS) RWY 5R

TACAN Z RWY 14L

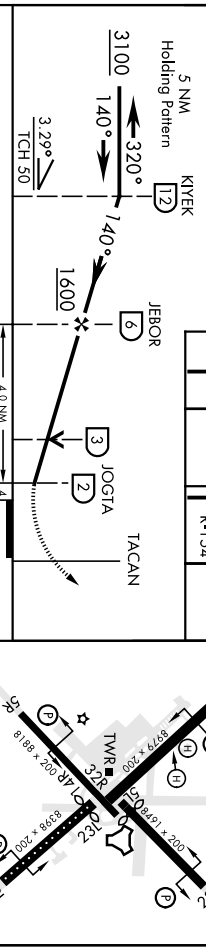
TACAN NKT Chon 75	APCH CRS 140°	Proc/Idg FDZE Arpt Elev	8979 26 29	[USN]	CHERRY POINT MCAS (CUNNINGHAM FLD) (KNKKT)	MISSED APPROACH: Climb to 1600 direct NKT TACAN and fly NKT R-154 to TARHL and hold.
----------------------	------------------	-------------------------------	-------------------------	-------	--	--

ATIS	(E) 119.75 (E) 127.475 (W) 244.875	APP CON 360.775 (obv 2600') 299.6 (or/blk 2600')	TOWER	GND CON	CINC DEL	ASR/ PAR
			121.3 340.2	128.625	125.95	316.125
				239.025		



EMERG SAFE ALT 100 NM 4100	ELEV 29	TDZE 26
----------------------------	---------	---------

VGSI and descent angle not coincident
 (VGSI Angle 3.00/TCH 71).
 Rwy 32R, 23L, 14R, 5L, marked in center mat area.



CATEGORY	A	B	C	D
S-14L	500-1	474 (500-1)	500-1 3/8	474 (500-1 3/8)
CIRCLING	580-1	551 (600-1)	580-1 1/2	580-2
			551 (600-1 1/2)	551 (600-2)

CHERRY POINT, NORTH CAROLINA 34° 54' N - 76° 53' W CHERRY POINT MCAS (CUNNINGHAM FLD) (KNKKT)
 Amtd 7 02NOV23
TACAN Z RWY 14L

TACAN NKT Chon 75	APCH CRS 334°	Rwy/Ldg TDLZ Appr Elev	7551 26 29
-----------------------------	-------------------------	------------------------------	---------------------------------------

[USN]

CHERRY POINT MCAS (CUNNINGHAM FLD) (K/NKKT)

ALSIF-1

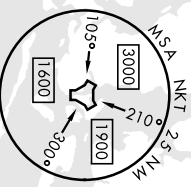
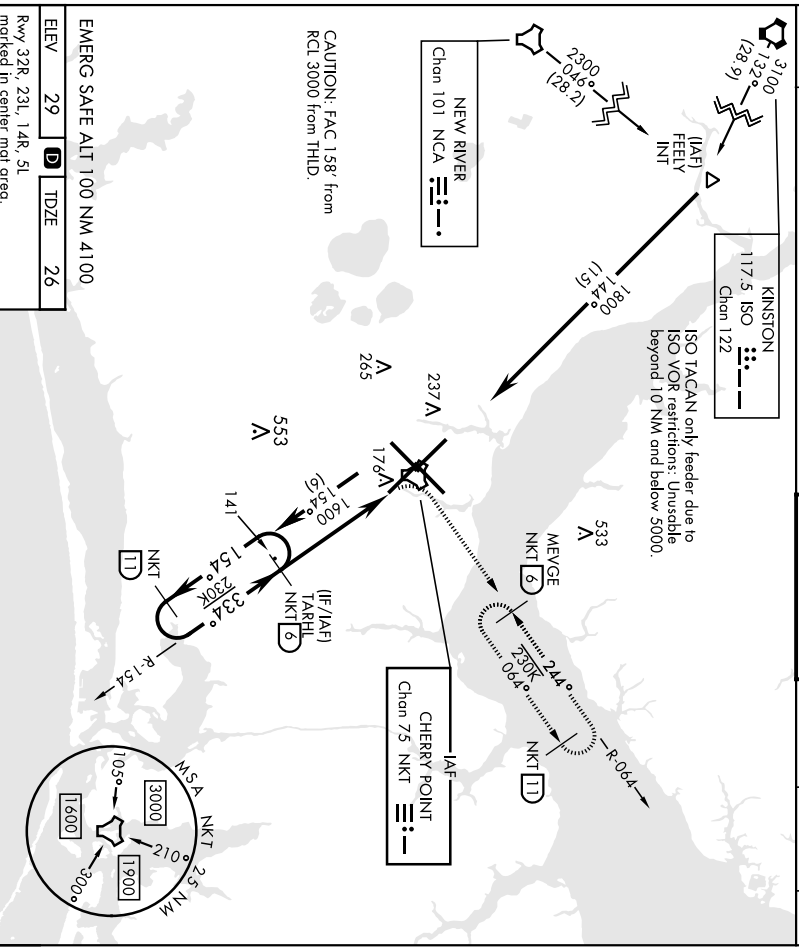
MISSED APPROACH: Climbing right turn to 1 600 and Intercept NKT R-064 to MEVGE and hold.

ATIS	(E) 119.75	APP CON	360.775 (abv 2600')
	(W) 132.575		299.6 (dt/Bw 2600')
127.475	119.35	121.3	340.2
244.875	377.175 (N)	124.1	268.7

TOWER
121.3 340.2

GND CON	128.625	CINC DEL	125.95
ASR/ PAR	239.025		316.125

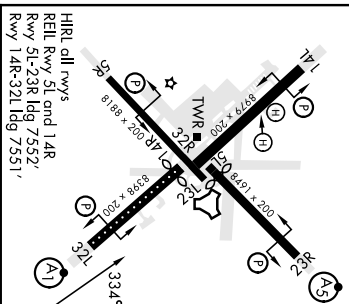
▲ * When ATIS inop, increase vis CAT AB to 1 mile, CAT CD to 1 3/8 miles.



EMERG SAFE ALT 100 NM 4100

ELEV **29** TDZE **26**

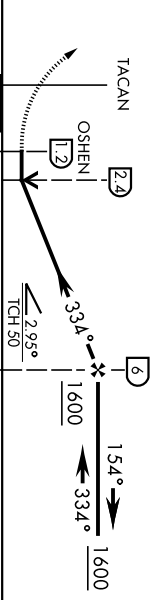
Rwy 32R, 23L, 14R, 5L marked in center mat area.



HRL all rwy's
REL Rwy 5L and 14R
Rwy 5L-23R ldg 7552'
Rwy 14R-32L ldg 7551'

1 600	MFEVGE NKT	6
	R-064	6

VGSI and descent angles not coincident
(VGSI Angle 3.00/TCH 78).



CATEGORY	A	B	C	D
S-32L*	460-1/2	435 (500-1/2)	460-3/4	435 (500-3/4)
DIRCLING	580-1	551 (600-1)	580-1/2	580-2
	580-1	551 (600-1)	551 (600-1/2)	551 (600-2)

CHERRY POINT, NORTH CAROLINA 34° 54'N-76° 53'W CHERRY POINT MCAS (CUNNINGHAM FLD) (K/NKKT)

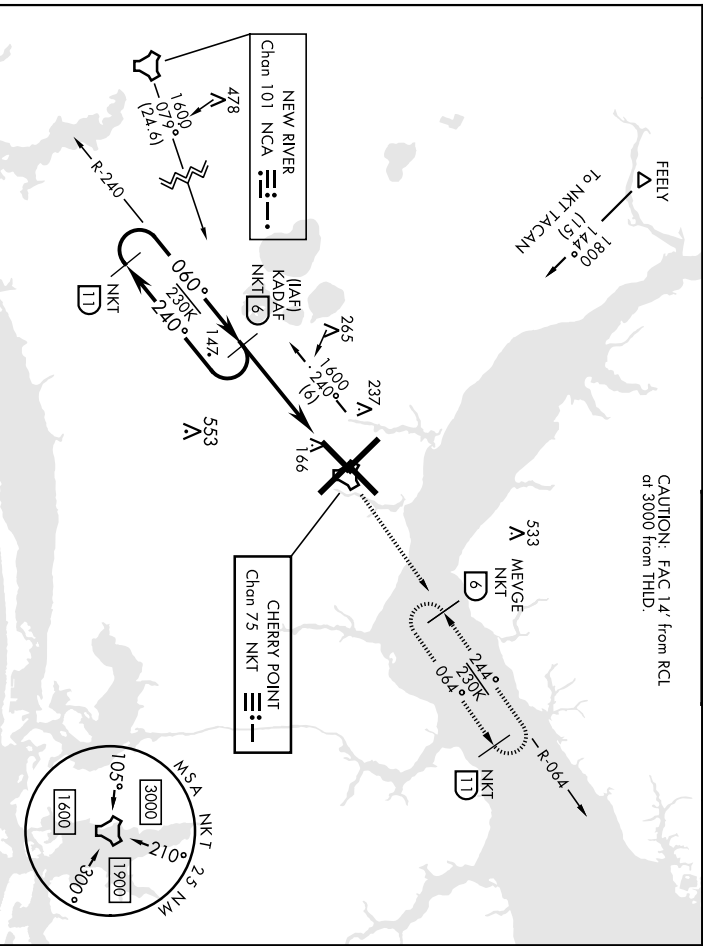
Amch 6 02NOV23

TACAN Z RWY 32L

TACAN NKT Chan 75	APCH CRS 060°	Rwy Idg TDZE Appt Elev	8188 27 29	[USN]	CERRY POINT MCAS (CUNNINGHAM FLD) (KNKKT)
<p>▼ MISSED APPROACH: Climb to 1600 direct NKT TACAN and fly NKT R-064 to MEVGE and hold.</p>					

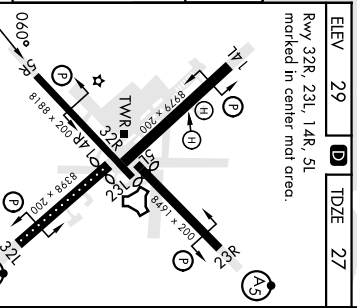
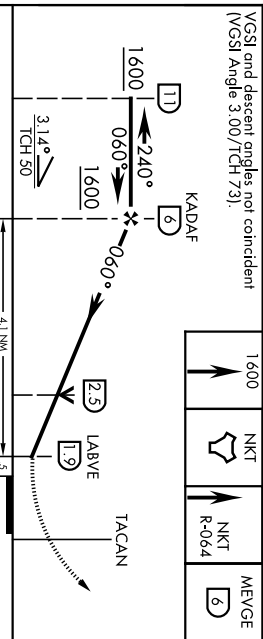
ATIS 127.475 244.875	(E) (E) (W)	119.75 132.575 119.35	APP CON 360 775 (bby 2600') 299.6 (at/bw 2600') 377.175 (N) 124.1 268.7	TOWER 121.3 340.2	GND CON 128.625	CINC DEL 125.95	ASR/ PAR 316.125
----------------------------	-------------------	-----------------------------	--	----------------------	--------------------	--------------------	------------------------

CAUTION: FAC 1/4' from RCL
of 3000 from THLD.



EMERG SAFE ALT 100 NM 4100

VGSI and descent angles not coincident
(VGSI Angle 3.00/TCH 7.3).



CATEGORY	A	B	C	D
S-5R	420-1	394 (400-1)	420-1½	394 (400-1½)
◉ CIRCLING	580-1	551 (600-1)	580-2	551 (600-2)

CERRY POINT, NORTH CAROLINA

34°54'N-76°53'W CERRY POINT MCAS (CUNNINGHAM FLD) (KNKKT)

Archt 5 02NOV23

TACAN Z RWY 5R