

## RADAR REQUIRED

Chart not to scale.

## DEPARTURE ROUTE DESCRIPTION



TAKE-OFF Rwy 5L/R: Climb heading 052°. Thence...

TAKE-OFF Rwy 14L/R: Climb heading 144° to 600 then climbing right turn heading 200°. Thence...

TAKE-OFF Rwy 23L/R: Climb heading 232°, crossing NTU TACAN 3.2 DME, turn left heading 200°. Thence...

TAKE-OFF Rwy 32L/R: Climb heading 324° to assigned altitude, turn right heading 060° within NTU TACAN 2 DME. Thence...  
...Maintain 4000 or assigned lower altitude.

CAPE CHARLES TRANSITION (NTU4.CCV): Via RADAR vectors to CCV VORTAC.

EDDYS TRANSITION (NTU4.EDDYS): Via RADAR vectors to EDDYS.

HARCUM TRANSITION (NTU4.HCM): Via RADAR vectors to HCM VORTAC.

HOPEWELL TRANSITION (NTU4.HPW): Via RADAR vectors to HPW VORTAC.

(At or below 17,000 only):

SUNNS TRANSITION (NTU4.SUNNS): Via RADAR vectors to SUNNS.

(At or below 17,000 only):

WAKES TRANSITION (NTU4.WAKES): Via RADAR vectors to WAKES.

## OCEANA-FOUR DEPARTURE (NTU4•NTU)

Orig 03JAN19

VIRGINIA BEACH, VIRGINIA  
OCEANA NAS (APOLLO SOUCEK FIELD) (KNITU)

**WYNNNS-THREE DEPARTURE (WYNNNS3•WYNNNS)**

OCEANA NAS (APOLLO SOURCE FIELD) (KNTU)  
VIRGINIA BEACH, VIRGINIA

ATIS 317.6  
CLNC DEL  
234.4  
GND CON 119.6 336.4  
OCEANA TOWER 127.075 360.2  
OCEANA DEP CON 123.9 266.8

SH-934 [USNI]

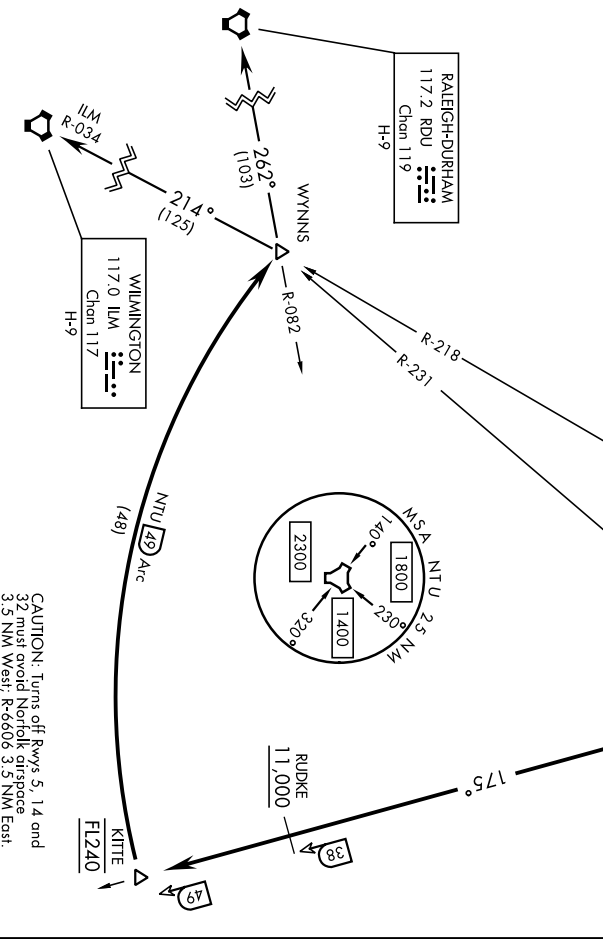
NORFOLK  
116.9 ORF  
Chen 116

OCEANA  
Chen 113 NTU

Rwy	Knots	120	180	240	300	360
All	V/V(fpm)	1000	1500	2000	2500	3000

ATC Minimum Climb Rate to FL240

**NTU TACAN REQUIRED**



**DEPARTURE ROUTE DESCRIPTION**

**TAKE-OFF Rwy 5L/R or 14L/R:** Climbing right turn to intercept NTU TACAN R-175 to CANOB. Thence...

**TAKE-OFF Rwy 23L/R:** Climbing left turn to intercept NTU TACAN R-175 to CANOB. Thence...

**TAKE-OFF Rwy 32L/R:** Climbing left turn within NTU TACAN 2 DME to intercept NTU R-175. Thence...

... Via NTU R-175 to KITE, arc south of NTU via the 49 mile arc to WYNNNS. Cross RUDKE at or above 11,000. Cross KITE at FL240, or as assigned. Thence...

**RALEIGH-DURHAM TRANSITION (WYNNNS3-RDU):** Via RDU VORTAC R-082 to RDU.

**WILMINGTON TRANSITION (WYNNNS3-ILM):** Via ILM VORTAC R-034 to ILM.

CAUTION: Turn off Rwy 5, 14 and 32 must avoid Norfolk airspace 3.5 NM West, R-6606 3.5 NM East.

**WYNNNS-THREE DEPARTURE (WYNNNS3•WYNNNS)**

Orig 03JAN19

VIRGINIA BEACH, VIRGINIA  
OCEANA NAS (APOLLO SOURCE FIELD) (KNTU)