

WAAS CH <b>40234</b> <b>W17A</b>	APP CRS <b>175°</b>	Rwy Idg TDZE Apt Elev	<b>3704</b> <b>27</b> <b>28</b>
--	------------------------	-----------------------------	---------------------------------------

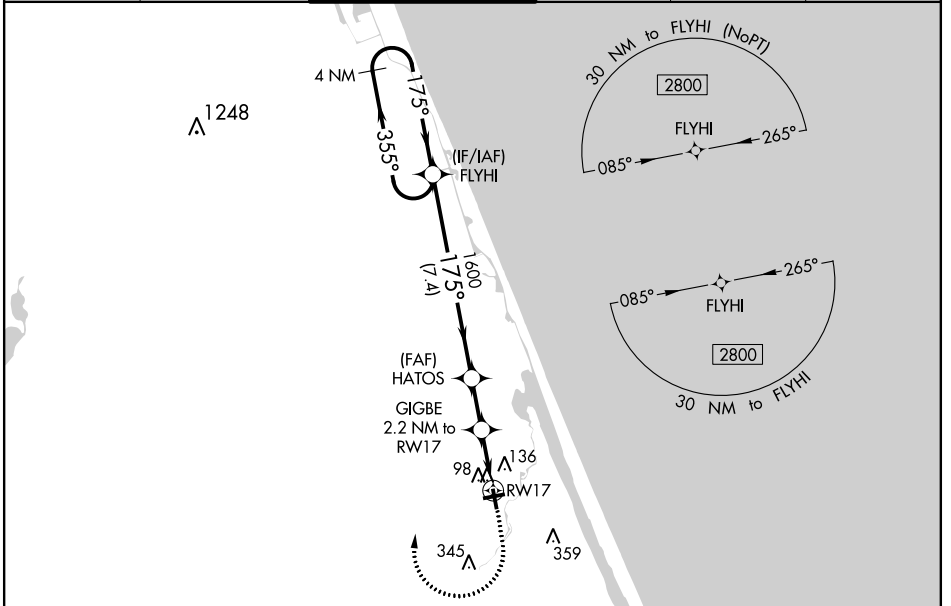
# RNAV (GPS) RWY 17

ORMOND BEACH MUNI (OMN)

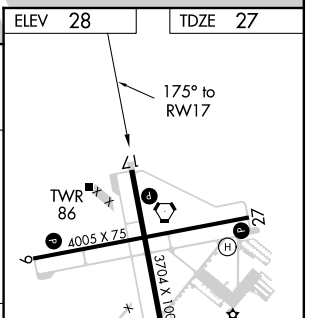
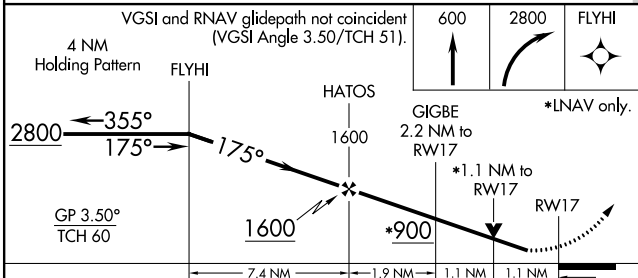
**⚠** Baro-VNAV NA when using Daytona Beach altimeter setting. For uncompensated Baro-VNAV systems, LNAV/VNAV NA below -15°C (5°F) or above 54°C (130°F). DME/DME RNP-0.3 NA. Helicopter visibility reduction below 3/4 SM NA. When local altimeter setting not received, use Daytona Beach altimeter setting and increase all DA 19 feet and all MDA 20 feet; increase LNAV Cat C visibility 1/8 mile. VDP NA when using Daytona Beach altimeter setting.

**MISSED APPROACH:** Climb to 600 then climbing right turn to 2800 direct FLYHI and hold.

ATIS <b>118.475</b>	DAYTONA APP CON <b>125.8 269.075</b>	ORMOND BEACH TOWER* <b>119.075 (CTAF)</b>	GND CON <b>121.625</b>	CLNC DEL <b>121.625</b>	UNICOM <b>123.05</b>
------------------------	---	--	---------------------------	----------------------------	-------------------------



ELEV 28	TDZE 27
---------	---------



CATEGORY	A	B	C	D
LPV DA	302-1	275 (300-1)		NA
LNAV/VNAV DA	288-1	261 (300-1)		NA
LNAV MDA	400-1	373 (400-1)		NA
<b>C</b> CIRCLING	500-1	471 (500-1)	740-2 711 (800-2)	NA

REIL Rwy 9, 17, 27, and 35  
MIRL Rwy 9-27 and 17-35

SE-3, 17 JUN 2021 to 15 JUL 2021

SE-3, 17 JUN 2021 to 15 JUL 2021

WAAS CH <b>77634</b> <b>W27A</b>	APP CRS <b>265°</b>	Rwy Idg TDZE Apt Elev	<b>4005</b> <b>28</b> <b>28</b>
--	------------------------	-----------------------------	---------------------------------------

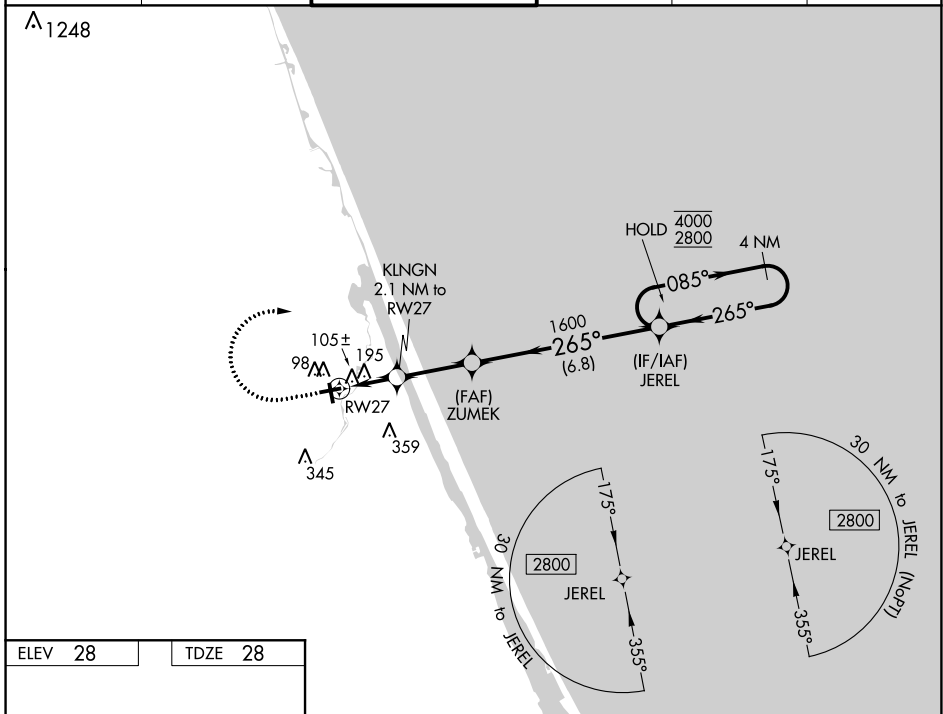
# RNAV (GPS) RWY 27

ORMOND BEACH MUNI (OMN)

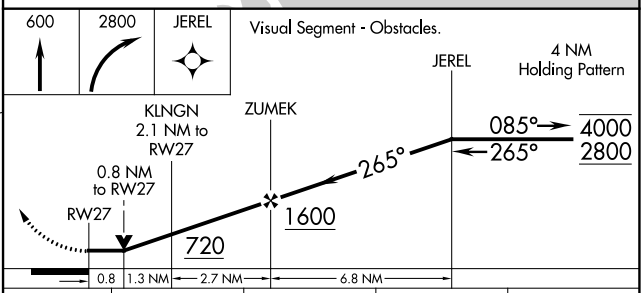
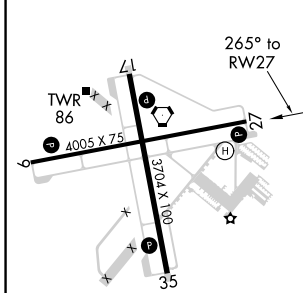
RNP APCH.  
 Rwy 27 helicopter visibility reduction below 3/4 SM NA.

MISSED APPROACH: Climb to 600 then climbing right turn to 2800 direct JEREL and hold.

ATIS <b>118.475</b>	DAYTONA APP CON <b>125.8 269.075</b>	ORMOND BEACH TOWER* <b>119.075 (CTAF)</b>	GND CON <b>121.625</b>	CLNC DEL <b>121.625</b>	UNICOM <b>123.05</b>
------------------------	---	--	---------------------------	----------------------------	-------------------------



ELEV 28	TDZE 28
---------	---------



CATEGORY	A	B	C	D
LP MDA	360-1 332 (400-1)			NA
LNAV MDA	460-1	432 (500-1)	460-1 1/4 432 (500-1 1/4)	NA
CIRCLING	500-1	472 (500-1)	740-2 712 (800-2)	NA

SE-3, 17 JUN 2021 to 15 JUL 2021

SE-3, 17 JUN 2021 to 15 JUL 2021

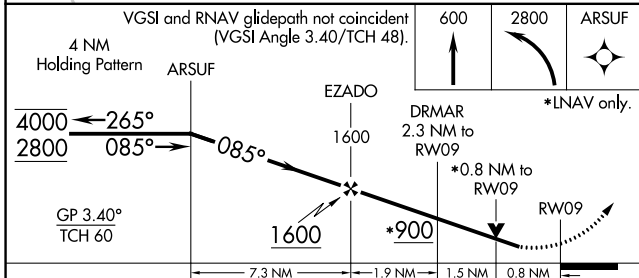
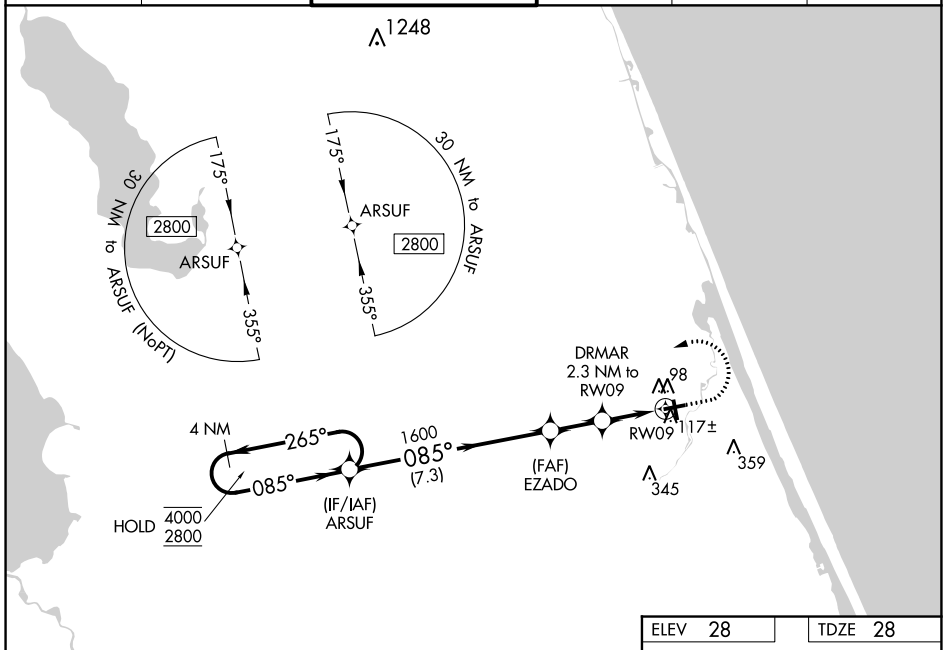
WAAS CH <b>82334</b> <b>W09A</b>	APP CRS <b>085°</b>	Rwy Idg TDZE <b>28</b> Apt Elev <b>28</b>	<b>4005</b>
--	------------------------	---	-------------

# RNAV (GPS) RWY 9

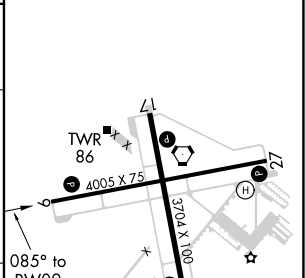
ORMOND BEACH MUNI (OMN)

RNP APCH.	MISSED APPROACH: Climb to 600 then climbing left turn to 2800 direct ARSUF and hold.
<p>▼ Rwy 9 helicopter visibility reduction below 3/4 SM NA. For uncompensated Baro-VNAV systems, LNAV/VNAV NA below -15° C or above 54° C. VDP NA when using Daytona Beach altimeter setting.</p>	

ATIS <b>118.475</b>	DAYTONA APP CON <b>125.8 269.075</b>	ORMOND BEACH TOWER* <b>119.075 (CTAF)</b>	GND CON <b>121.625</b>	CLNC DEL <b>121.625</b>	UNICOM <b>123.05</b>
------------------------	---	--	---------------------------	----------------------------	-------------------------



ELEV <b>28</b>	TDZE <b>28</b>
----------------	----------------



CATEGORY	A	B	C	D
LPV DA	313-1 285 (300-1)			NA
LNAV/VNAV DA	278-1 250 (300-1)			NA
LNAV MDA	380-1 352 (400-1)			NA
CIRCLING	500-1 472 (500-1)		740-2 712 (800-2)	NA

REIL Rwy 9, 17, 27 and 35

MIRL Rwy 9-27 and 17-35

SE-3, 17 JUN 2021 to 15 JUL 2021

SE-3, 17 JUN 2021 to 15 JUL 2021