

WAAS CH 78207 W15A	APP CRS 146°	Rwy Idg TDZE Apt Elev	5006 2193 2193
---------------------------------	------------------------	-----------------------------	---

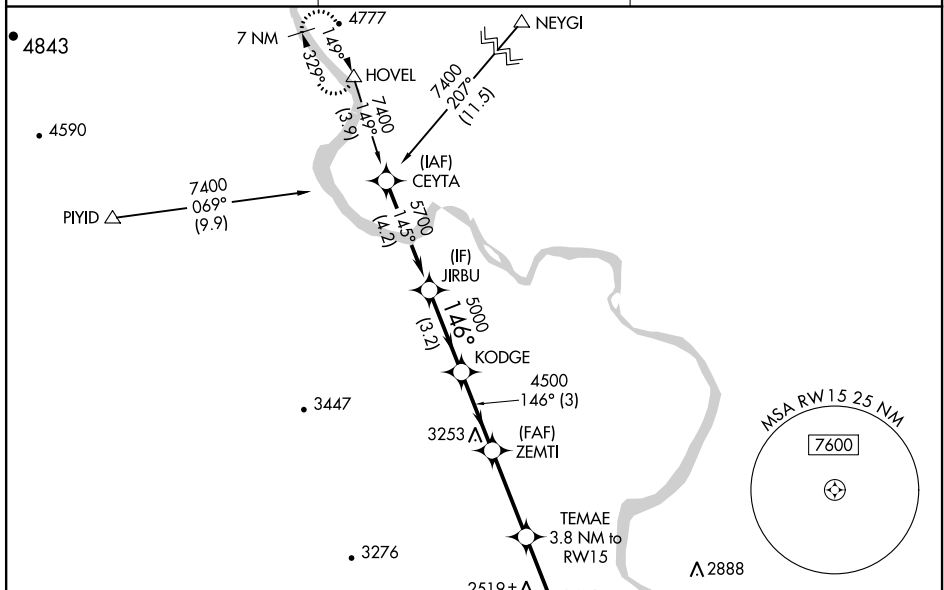
RNAV (GPS) RWY 15

ONTARIO MUNI (ONO)

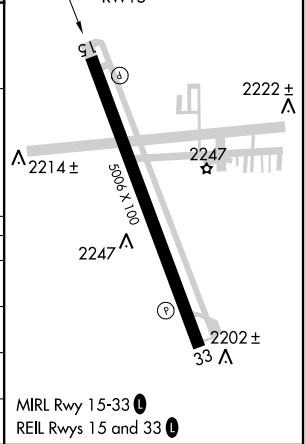
⚠ Baro-VNAV NA when using Caldwell altimeter setting. For uncompensated Baro-VNAV systems, LNAV/VNAV NA below -18°C (0°F) or above 54°C (130°F). DME/DME RNP-0.3 NA.
 When local altimeter setting not received, use Caldwell altimeter setting and increase LPV DA to 2867 feet, LNAV/VNAV DA to 2911 feet, and all MDA 100 feet; increase LPV visibility, all Cats by ½ SM, increase LNAV visibility Cats C/D and Circling Cat C by ¼ SM. Rwy 15 helicopter visibility reduction below 1 SM NA. Straight-in Rwy 15 NA at night, Circling Rwy 15 NA at night.

MISSED APPROACH:
 Climbing right turn to 9000 direct HOVEL and hold, continue climb-in-hold to 9000.

ASOS 135.275	SALT LAKE CENTER 128.05 306.95	UNICOM 122.8 (CTAF) 0
------------------------	--	---------------------------------



ELEV 2193	TDZE 2193
-----------	-----------



	A	B	C	D
LPV DA	2769-2 576 (600-2)			
LNAV/VNAV DA	2814-2½ 621 (700-2½)			
LNAV MDA	2780-1 587 (600-1)	2780-1¾ 587 (600-1¾)		
CIRCLING	2760-1 567 (600-1)	2800-1 607 (700-1)	3120-2¾ 927 (1000-2¾)	3240-3 1047 (1100-3)

MIRL Rwy 15-33 0
 REIL Rwys 15 and 33 0

NW-1, 02 DEC 2021 to 30 DEC 2021

NW-1, 02 DEC 2021 to 30 DEC 2021

WAAS CH 87007 W33A	APP CRS 326°	Rwy Idg TDZE Apt Elev	5006 2193 2193
---------------------------------	------------------------	-----------------------------	---

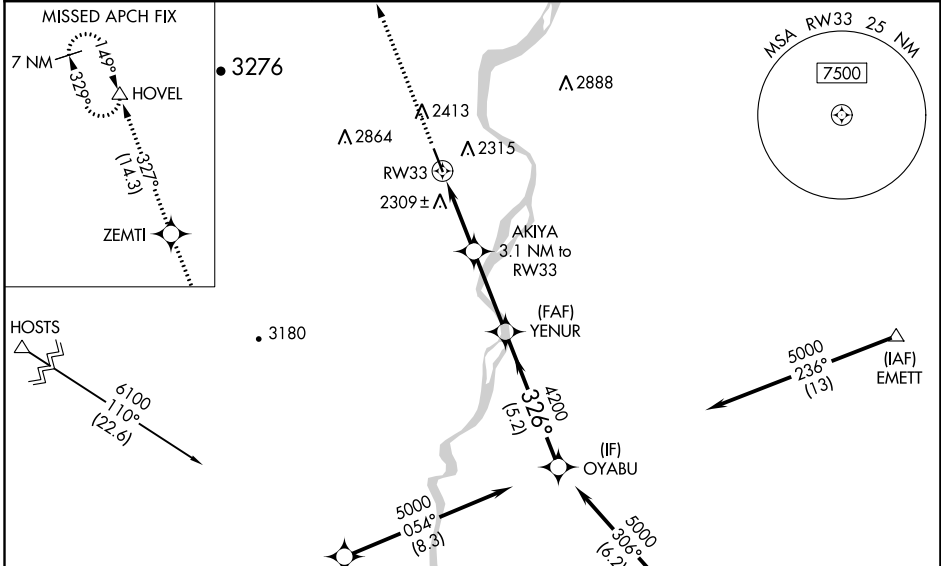
RNAV (GPS) RWY 33

ONTARIO MUNI (ONO)

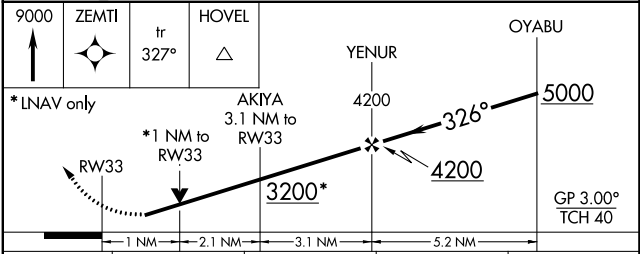
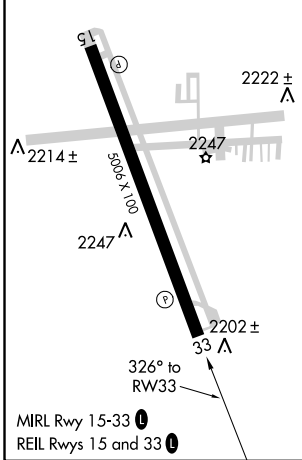
⚠ For uncompensated Baro-VNAV systems, LNAV/VNAV NA below -18°C (0°F) or above 54°C (130°F). DME/DME RNP -0.3 NA. Baro-VNAV and VDP NA when using Caldwell altimeter setting. When local altimeter setting not received, use Caldwell altimeter setting and increase all DA to 2541 feet and increase LPV and LNAV/VNAV visibility ¾ SM all Cats; increase all MDA 100 feet and increase LNAV Cat C and D ¾ SM and Circling Cat C visibility ½ SM. Circling Rwy 15 NA at night. Rwy 33 helicopter visibility reduction below ¾ SM NA.

MISSED APPROACH: Climb to 9000 direct ZEMTI and on track 327° to HOVEL and hold, continue climb-in-hold 9000.

ASOS 135.275	SALT LAKE CENTER 128.05 306.95	UNICOM 122.8 (CTAF) 0
------------------------	--	---------------------------------



ELEV 2193	TDZE 2193
-----------	-----------



CATEGORY	A	B	C	D
LPV DA		2443-7/8	250 (300-7/8)	
LNAV/VNAV DA		2443-7/8	250 (300-7/8)	
LNAV MDA		2560-1	367 (400-1)	
C CIRCLING	2760-1 567 (600-1)	2800-1 607 (700-1)	3120-2¾ 927 (1000-2¾)	3240-3 1047 (1100-3)

NW-1, 02 DEC 2021 to 30 DEC 2021

NW-1, 02 DEC 2021 to 30 DEC 2021