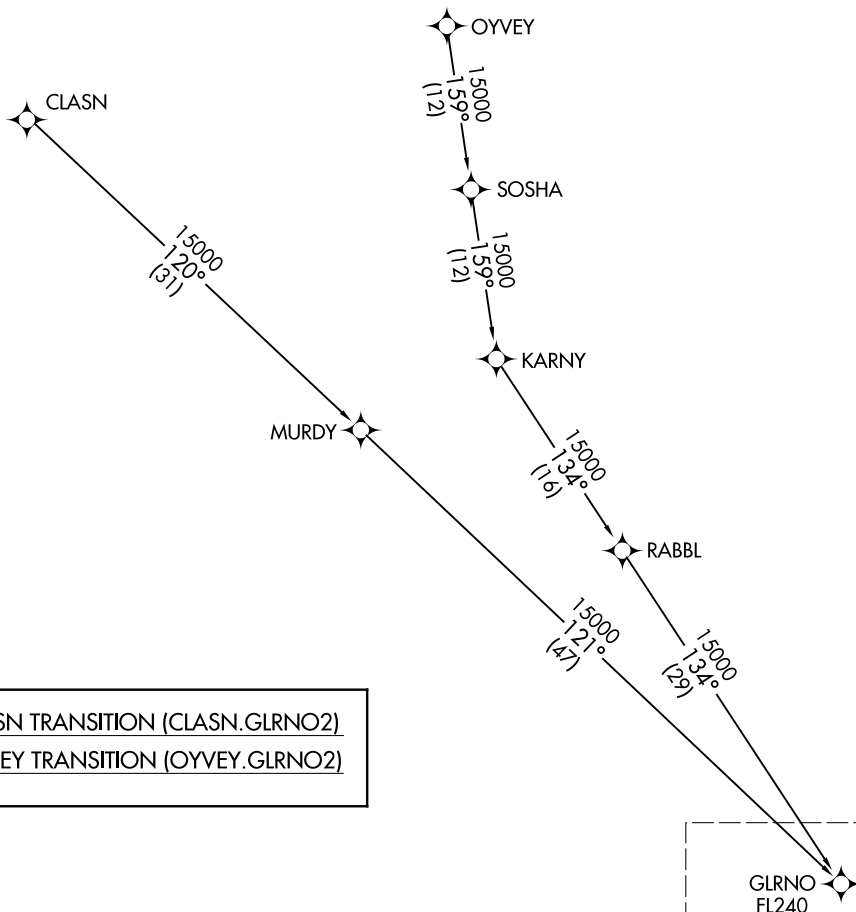


SOCAL APP CON
127.0 318.2
D-ATIS
124.25
ONTARIO TOWER
120.6 360.775

- NOTE: RADAR required.
- NOTE: RNAV 1.
- NOTE: DME/DME/IRU or GPS required.
- NOTE: Turbojet and turboprop aircraft only.
- NOTE: Expect Rwy 26L unless otherwise assigned by ATC.
- NOTE: Expect local area altimeter reaching FL200.



SW-3, 22 FEB 2024 to 21 MAR 2024

SW-3, 22 FEB 2024 to 21 MAR 2024

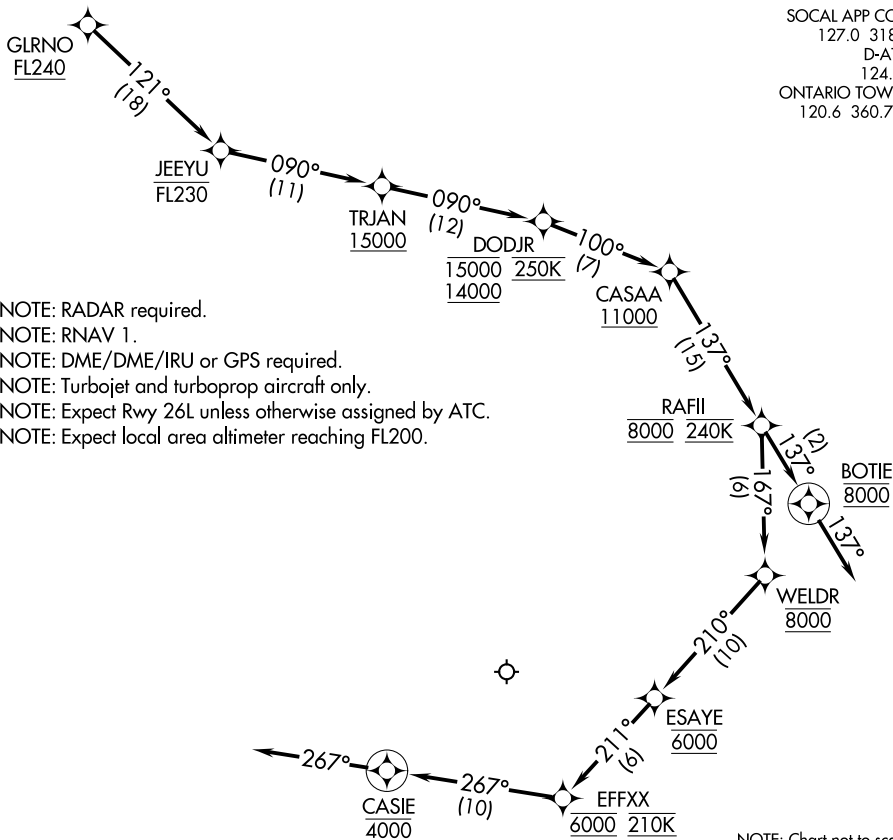
CLASN TRANSITION (CLASN.GLRNO2)
OYVEY TRANSITION (OYVEY.GLRNO2)

GLRNO
FL240
See following page
for arrival routes.

NOTE: Chart not to scale.

(CONTINUED ON FOLLOWING PAGE)

SOCAL APP CON
127.0 318.2
D-ATIS
124.25
ONTARIO TOWER
120.6 360.775



NOTE: RADAR required.
NOTE: RNAV 1.
NOTE: DME/DME/IRU or GPS required.
NOTE: Turbojet and turboprop aircraft only.
NOTE: Expect Rwy 26L unless otherwise assigned by ATC.
NOTE: Expect local area altimeter reaching FL200.

SW-3, 22 FEB 2024 to 21 MAR 2024

SW-3, 22 FEB 2024 to 21 MAR 2024

NOTE: Chart not to scale.

ARRIVAL ROUTE DESCRIPTION

From GLRNO on track 121° to cross JEEYU at or below FL230, then on track 090° to cross TRJAN at at or above 15000, then on track 090° to cross DODJR between 14000 and 15000 and at 250K, then on track 100° to cross CASAA at or above 11000, then on track 137° to cross RAFII at 8000 and at 240K.

LANDING RUNWAYS 8L/R: From RAFII on track 167° to cross WELDR at 8000, then on track 210° to cross ESAYE at 6000, then on track 211° to cross EFFXX at 6000 and at 210K, then on track 267° to cross CASIE at 4000, then on track 267°. Expect RNAV (RNP) Z RWY 8L approach or RADAR vectors to final approach course.

LANDING RUNWAYS 26L/R: From RAFII on track 137° to cross BOTIE at 8000, then on track 137°. Expect RNAV (RNP) Z RWY 26L or RADAR vectors to final approach course.

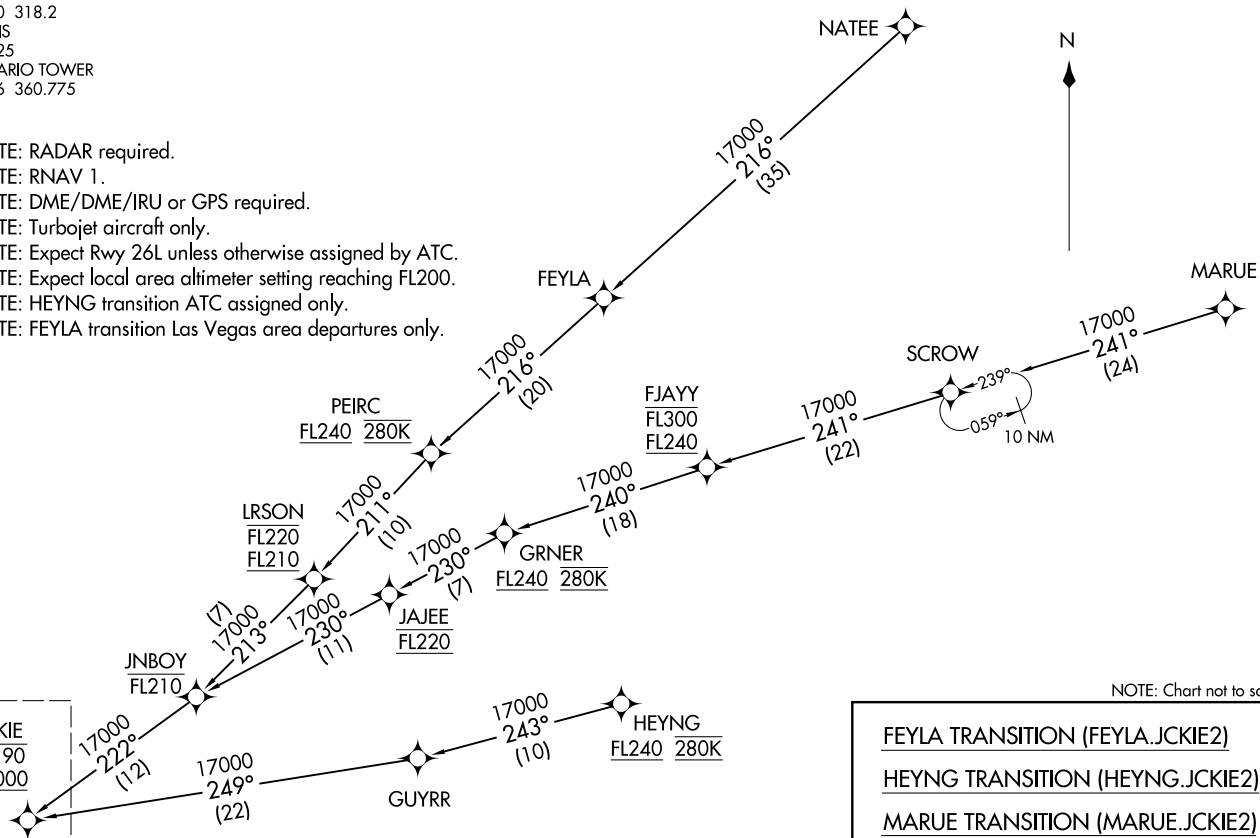
LOST COMMUNICATIONS

LANDING WEST: Proceed on the RNAV (RNP) Z RWY 26L approach.

LANDING EAST: Proceed on the RNAV (RNP) Z RWY 8L approach.

SOCAL APP CON
127.0 318.2
D-ATIS
124.25
ONTARIO TOWER
120.6 360.775

- NOTE: RADAR required.
- NOTE: RNAV 1.
- NOTE: DME/DME/IRU or GPS required.
- NOTE: Turbojet aircraft only.
- NOTE: Expect Rwy 26L unless otherwise assigned by ATC.
- NOTE: Expect local area altimeter setting reaching FL200.
- NOTE: HEYNG transition ATC assigned only.
- NOTE: FEYLA transition Las Vegas area departures only.



NOTE: Chart not to scale.

FEYLA TRANSITION (FEYLA.JCKIE2)
 HEYNG TRANSITION (HEYNG.JCKIE2)
 MARUE TRANSITION (MARUE.JCKIE2)
 NATEE TRANSITION (NATEE.JCKIE2)

(CONTINUED ON FOLLOWING PAGE)

JCKIE TWO ARRIVAL (RNAV) Transition Routes
 (JCKIE.JCKIE2) 05DEC19
 ONTARIO, CALIFORNIA
 ONTARIO INTL (ONT)

(JCKIE.JCKIE2) 19339
 JCKIE TWO ARRIVAL (RNAV) Transition Routes
 A-965 (FAA)
 ONTARIO INTL (ONT)
 ONTARIO, CALIFORNIA

SOCAL APP CON
127.0 318.2
D-ATIS
124.25
ONTARIO TOWER
120.6 360.775

Ldg Rwy 8L/R

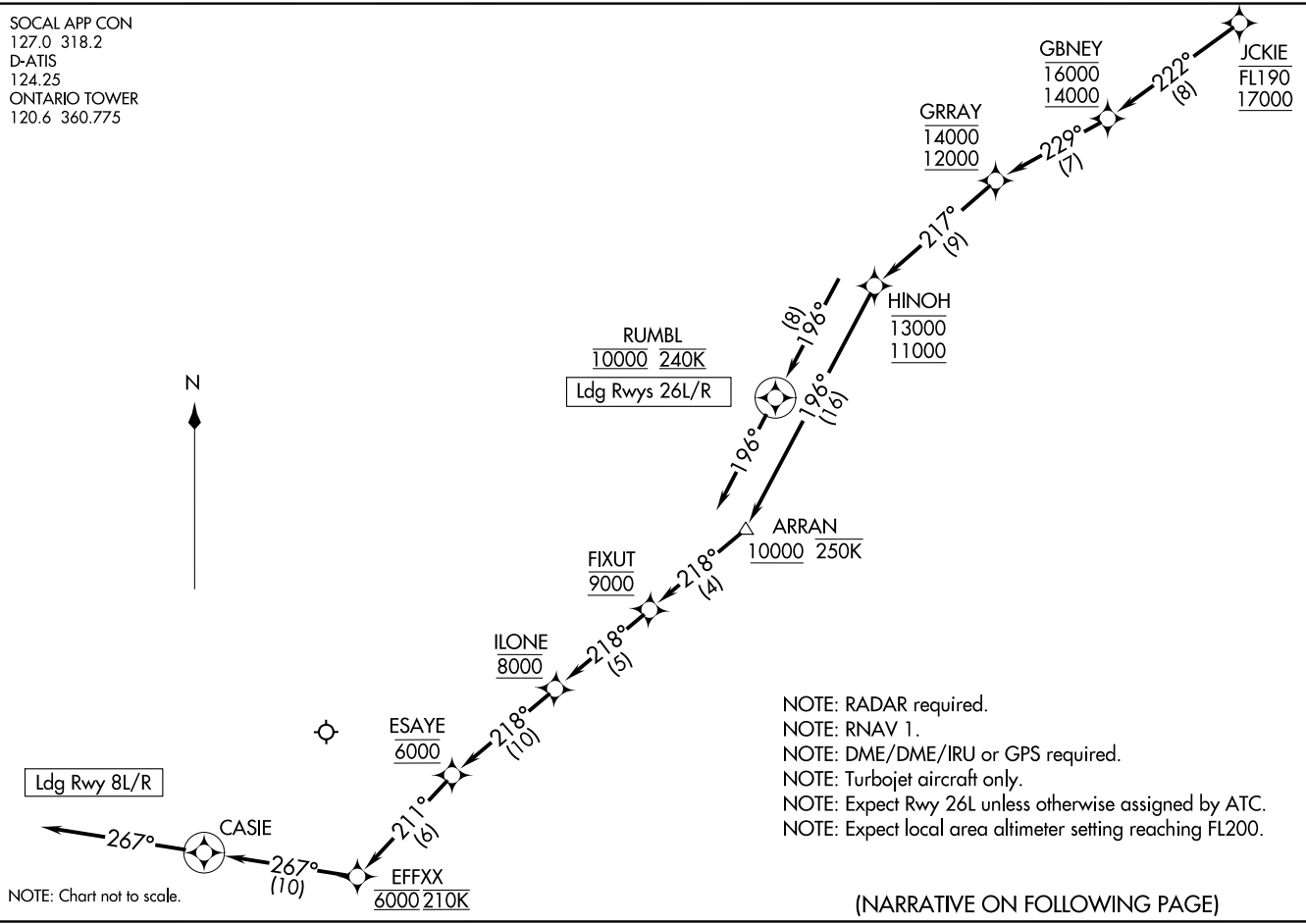
RUMBL
10000 240K
Ldg Rwys 26L/R



NOTE: Chart not to scale.

NOTE: RADAR required.
NOTE: RNAV 1.
NOTE: DME/DME/IRU or GPS required.
NOTE: Turbojet aircraft only.
NOTE: Expect Rwy 26L unless otherwise assigned by ATC.
NOTE: Expect local area altimeter setting reaching FL200.

(NARRATIVE ON FOLLOWING PAGE)



ARRIVAL ROUTE DESCRIPTION

From JCKIE on track 222° to cross GBNEY between 14000 and 16000, then on track 229° to cross GRRAY between 12000 and 14000, then on track 217° to cross HINOH between 11000 and 13000.

LANDING RUNWAY 8L/R: From HINOH on track 196° to cross ARRAN at or above 10000 and at or below 250K, then on track 218° to cross FIXUT at 9000, then on track 218° to cross ILONE at 8000, then on track 218° to cross ESAYE at 6000, then on track 211° to cross EFFXX at 6000 and at 210K then on track 267° to CASIE, then on heading 267° or as assigned by ATC. Expect RNAV (RNP) Z RWY 8L approach or RADAR vectors to final approach course.

LANDING RWY 26L/R: From HINOH on track 196° to cross RUMBL at 10000 and at 240K, then on heading 196° or as assigned by ATC. Expect RNAV (RNP) Z RWY 26L approach or RADAR vectors to final approach course.

LOST COMMUNICATIONS

LANDING WEST: Proceed on the RNAV (RNP) Z RWY 26L approach or ILS or LOC RWY 26L approach.

LANDING EAST: Proceed on the RNAV (RNP) Z RWY 8L approach or ILS or LOC RWY 8L approach.

SW-3, 22 FEB 2024 to 21 MAR 2024

SW-3, 22 FEB 2024 to 21 MAR 2024

ARRIVAL ROUTE DESCRIPTION

ELKEY TRANSITION (ELKEY.KARLB3)

FICKY TRANSITION (FICKY.KARLB3)

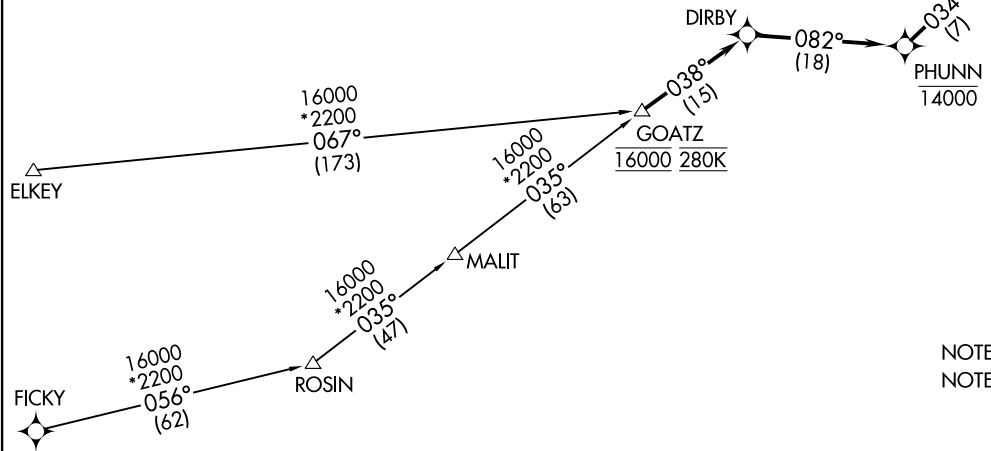
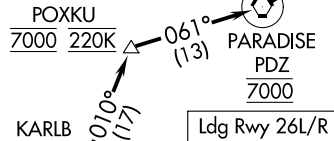
ROSIN TRANSITION (ROSIN.KARLB3)

From GOATZ on track 038° to DIRBY, then on track 082° to cross PHUNN at or below 14000, then on track 034° to cross SHHOW at or below 12000, then on track 010° to cross OLLLY at or above 9000, then on track 010° to cross KARLB at or below 8000, then on track 010° to cross POXKU at 7000 and at 220K, then on track 061° to cross PDZ VORTAC at 7000, then on heading 049° or as assigned by ATC. Expect RNAV (RNP) Z or ILS Rwy 26L/R or RADAR vectors to final approach course.

RNAV 1 - GPS.

RADAR required.

SOCAL APP CON
127.4 263.025
D-ATIS
124.25
ONTARIO TOWER
120.6 360.775



NOTE: Jet aircraft only.
NOTE: ROSIN Transition ATC assigned only.

NOTE: Chart not to scale.

KARLB THREE ARRIVAL (RNAV)
(GOATZ.KARLB3) 20ARR23

ONTARIO, CALIFORNIA
ONTARIO INTL (ONT)

(GOATZ.KARLB3) 23110
KARLB THREE ARRIVAL (RNAV)

AL-965 (FAA)

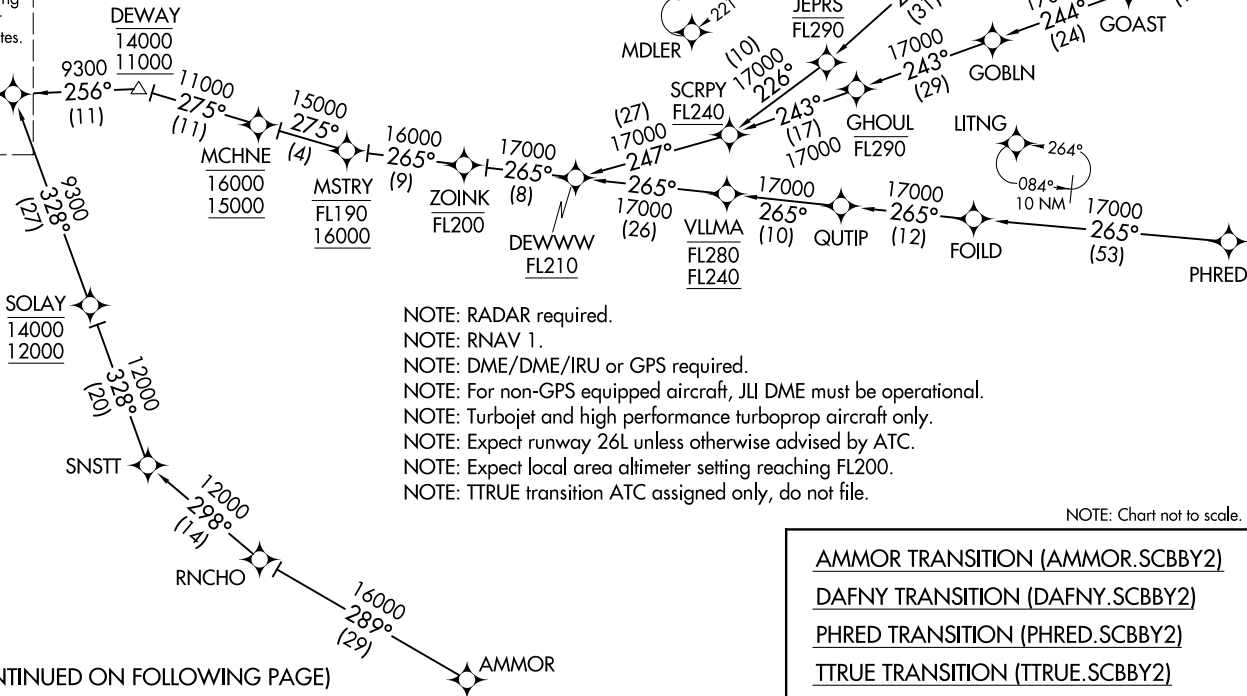
ONTARIO INTL (ONT)
ONTARIO, CALIFORNIA

SOCAL APP CON
134.0 278.3 (SE)
126.7 370.95 (E)
D-ATIS
124.25
ONTARIO TOWER
120.6 360.775



See following page for Arrival Routes.

SCBBY
11000
9300



- NOTE: RADAR required.
- NOTE: RNAV 1.
- NOTE: DME/DME/IRU or GPS required.
- NOTE: For non-GPS equipped aircraft, JII DME must be operational.
- NOTE: Turbojet and high performance turboprop aircraft only.
- NOTE: Expect runway 26L unless otherwise advised by ATC.
- NOTE: Expect local area altimeter setting reaching FL200.
- NOTE: TTRUE transition ATC assigned only, do not file.

NOTE: Chart not to scale.

- AMMOR TRANSITION (AMMOR.SCBBY2)
- DAFNY TRANSITION (DAFNY.SCBBY2)
- PHRED TRANSITION (PHRED.SCBBY2)
- TTRUE TRANSITION (TTRUE.SCBBY2)

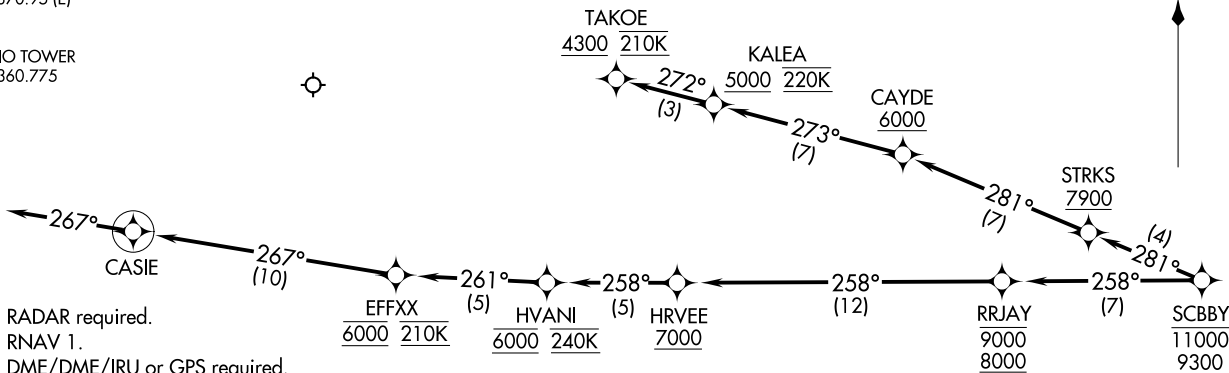
(CONTINUED ON FOLLOWING PAGE)

SCBBY TWO ARRIVAL (RNAV) Transition Routes
(SCBBY.SCBBY2) 01FEB18
ONTARIO, CALIFORNIA
ONTARIO INTL (ONT)

(SCBBY.SCBBY2) 18032
SCBBY TWO ARRIVAL (RNAV) Transition Routes AL-965 (FAA)
ONTARIO, CALIFORNIA
ONTARIO INTL (ONT)

SCBBY TWO ARRIVAL (RNAV) Arrival Routes
 (SCBBY:SCBBY2) 01FEB18

SOCAL APP CON
 134.0 278.3 (SE)
 126.7 370.95 (E)
 D-ATIS
 124.25
 ONTARIO TOWER
 120.6 360.775



NOTE: RADAR required.
 NOTE: RNAV 1.
 NOTE: DME/DME/IRU or GPS required.
 NOTE: For non-GPS equipped aircraft, JLI DME must be operational.
 NOTE: Turbojet and high performance turboprop aircraft only.
 NOTE: Expect runway 26L unless otherwise advised by ATC.
 NOTE: Expect local area altimeter setting reaching FL200.

NOTE: Chart not to scale.

ARRIVAL ROUTE DESCRIPTION

LANDING RUNWAYS 8L/R: From SCBBY on track 258° to cross RRJAY between 8000 and 9000, then on track 258° to cross HRVEE at or above 7000, then on track 258° to cross HVANI at 6000 and at 240K, then on track 261° to cross EFFXX at 6000 and at 210K, then on track 267° to CASIE, then on track 267°. Expect RNAV (RNP) Z RWY 8L approach or RADAR vectors to final approach course.

LANDING RUNWAYS 26L/R: From SCBBY on track 281° to cross STRKS at or above 7900, then on track 281° to cross CAYDE at or above 6000, then on track 273° to cross KALEA at or above 5000 and at 220K, then on track 272° to cross TAKOE at or above 4300 and at 210K. Expect assigned instrument approach or RADAR vectors to final approach course.

LOST COMMUNICATIONS

LANDING WEST: Proceed on the RNAV (RNP) Z RWY 26L approach or ILS or LOC RWY 26L approach.

LANDING EAST: Proceed on the RNAV (RNP) Z RWY 8L approach or ILS or LOC RWY 8L approach.

ONTARIO, CALIFORNIA
 ONTARIO INTL (ONT)

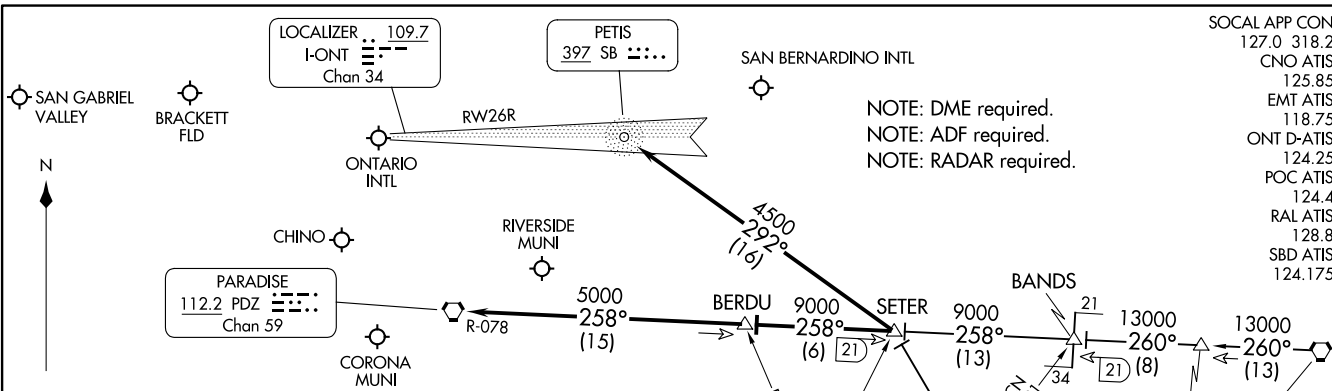
(SCBBY:SCBBY2) 18032
 SCBBY TWO ARRIVAL (RNAV) Arrival Routes

AL-965 (FAA)

ONTARIO INTL (ONT)
 ONTARIO, CALIFORNIA

SETER FIVE ARRIVAL
(SETER,SETER5) 17AUG17

(SETER,SETER5) 23278
SETER FIVE ARRIVAL



- SOCAL APP CON 127.0 318.2
- CNO ATIS 125.85
- EMT ATIS 118.75
- ONT D-ATIS 124.25
- POC ATIS 124.4
- RAL ATIS 128.8
- SBD ATIS 124.175

NOTE: DME required.
NOTE: ADF required.
NOTE: RADAR required.

ARRIVAL ROUTE DESCRIPTION

JULIAN TRANSITION (JLI.SETER5): From over JLI VORTAC on JLI R-315 to SETER. Thence. . . .
PALM SPRINGS TRANSITION (PSP.SETER5): From over PSP VORTAC on PSP R-260 to BANDS, then on PDZ R-078 to SETER. Thence. . . .

LANDING ONTARIO INTL
RUNWAYS 26L/R: From over SETER on SB NDB 292° course to SB NDB; expect ILS approach.
RUNWAYS 8L/R: From over SETER on PDZ R-078 to BERDU, then on PDZ R-078 to PDZ VORTAC; expect vectors to final approach course.

ALL OTHER AIRPORTS
 From over SETER via PDZ R-078 to BERDU, then on PDZ R-078 to PDZ VORTAC; expect vectors to final approach course.

HOMELAND
112.05 HDF
Chan 100

ROTHY
VERTICAL NAVIGATION
PLANNING INFORMATION
Expect 12000

PALM SPRINGS
115.5 PSP
Chan 102
VERTICAL NAVIGATION
PLANNING INFORMATION
Expect 16000

OCEANSIDE
115.3 OCN
Chan 100

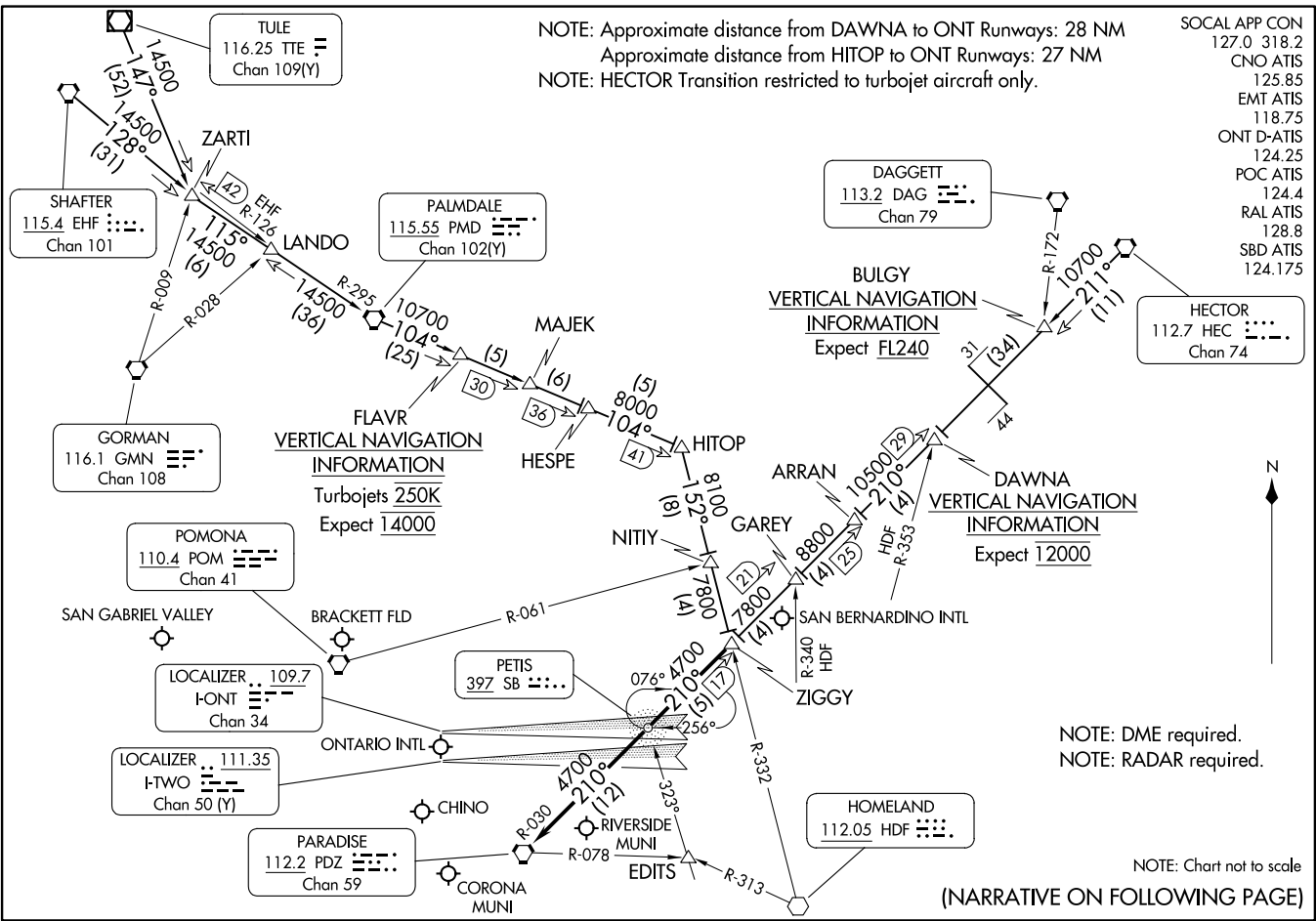
JULIAN
114.0 JLI
Chan 87
VERTICAL NAVIGATION
PLANNING INFORMATION
Expect FL240

NOTE: Chart not to scale.

ONTARIO, CALIFORNIA

AL-965 (FAA)

ONTARIO, CALIFORNIA



NOTE: Approximate distance from DAWNA to ONT Runways: 28 NM
Approximate distance from HITOP to ONT Runways: 27 NM
NOTE: HECTOR Transition restricted to turbojet aircraft only.

- SOCAL APP CON 127.0 318.2
- CNO ATIS 125.85
- EMT ATIS 118.75
- ONT D-ATIS 124.25
- POC ATIS 124.4
- RAL ATIS 128.8
- SBD ATIS 124.175

NOTE: DME required.
NOTE: RADAR required.

NOTE: Chart not to scale
(NARRATIVE ON FOLLOWING PAGE)

ARRIVAL ROUTE DESCRIPTION

HECTOR TRANSITION (HEC.ZIGGY7): From over HEC VORTAC on HEC R-211 and PDZ R-030 to ZIGGY. Thence

PALMDALE TRANSITION (PMD.ZIGGY7): From over PMD VORTAC on PMD R-104 to HITOP, then on HDF R-332 to ZIGGY. Thence

SHAFTER TRANSITION (EHF.ZIGGY7): From over EHF VORTAC on EHF R-128 and PMD R-295 to PMD VORTAC, then on PMD R-104 to HITOP, then on HDF R-332 to ZIGGY. Thence

TULE TRANSITION (TTE.ZIGGY7): From over TTE VOR/DME on TTE R-147 and PMD R-295 to PMD VORTAC, then on PMD R-104 to HITOP, then on HDF R-332 to ZIGGY. Thence

LANDING ONTARIO INTL

RUNWAYS 8L/R: From over ZIGGY on PDZ R-030 to PDZ VORTAC; expect RADAR vectors to final approach course.

RUNWAYS 26 L/R: From over ZIGGY direct PETIS NDB or on PDZ R-030 to PETIS; expect RADAR vectors for ILS approach.

ALL OTHER AIRPORTS

From over ZIGGY on PDZ R-030 to PDZ VORTAC; expect RADAR vectors to final approach course.

SW-3, 22 FEB 2024 to 21 MAR 2024

SW-3, 22 FEB 2024 to 21 MAR 2024