

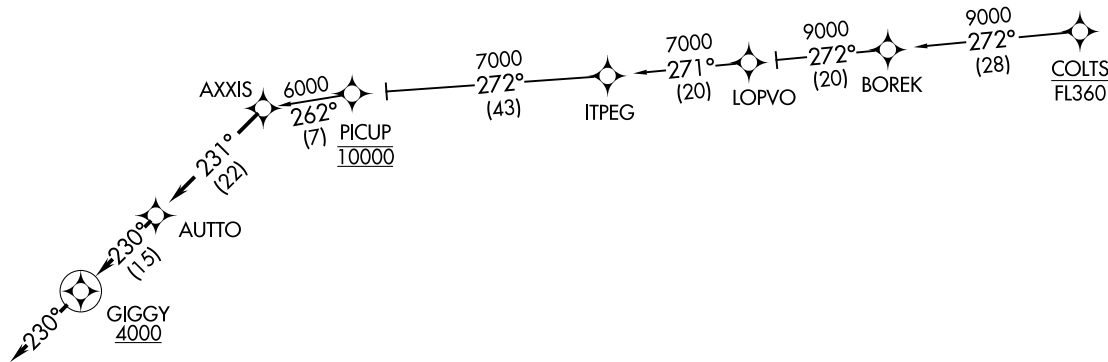
DET ATIS
124.875
DETROIT APP CON
134.3 284.0

(AXXIS.GIGGY2) 20198

GIGGY TWO ARRIVAL (RNAV)

AL-118 (FAA)

DETROIT, MICHIGAN



NOTE: RADAR required.
NOTE: RNAV 1.
NOTE: DME/DME/IRU or GPS required.

ARRIVAL ROUTE DESCRIPTION

COLTS TRANSITION (COLTS.GIGGY2)
PICUP TRANSITION (PICUP.GIGGY2)

LANDING ALL AIRPORTS: From AXXIS on track 231° to AUTTO, then on track 230° to cross GIGGY at or above 4000, then on track 230°. Expect RADAR vectors to final approach course.

NOTE: Chart not to scale.

GIGGY TWO ARRIVAL (RNAV)

(AXXIS.GIGGY2) 100CTT9

DETROIT, MICHIGAN

ARB ATIS
 134.55
 FNT ATIS
 133.15
 DET ATIS
 124.875
 PTK ATIS
 125.025
 YIP ATIS
 127.425
 KMTC ATIS
 125.325 270.1
 DETROIT APP CON
 134.3 284.0

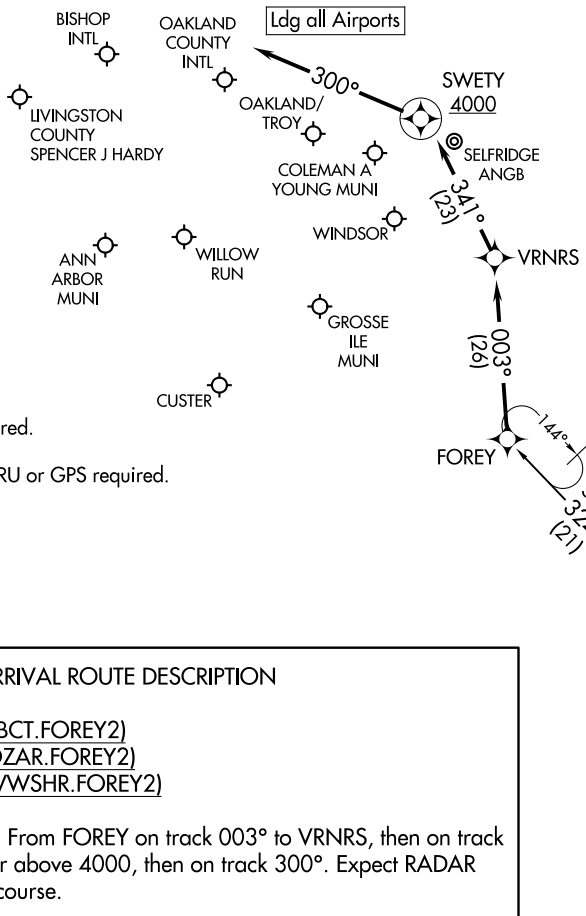
NOTE: RADAR required.
 NOTE: RNAV 1.
 NOTE: DME/DME/IRU or GPS required.

NOTE: Chart not to scale.

ARRIVAL ROUTE DESCRIPTION

BOBCT TRANSITION (BOBCT.FOREY2)
KOZAR TRANSITION (KOZAR.FOREY2)
WWSHR TRANSITION (WWSHR.FOREY2)

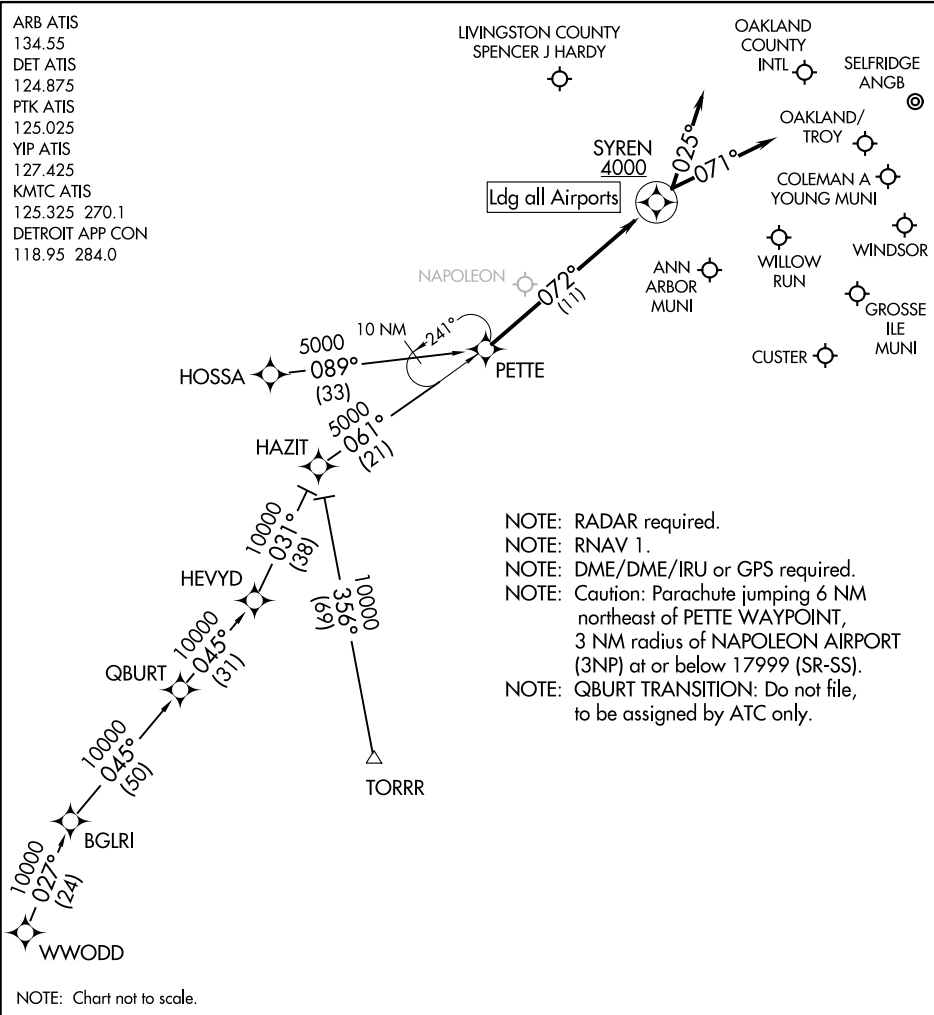
LANDING ALL AIRPORTS: From FOREY on track 003° to VRNRS, then on track 341° to cross SWETY at or above 4000, then on track 300°. Expect RADAR vectors to final approach course.



PETTE TWO ARRIVAL (RNAV)

PONTIAC, MICHIGAN

ARB ATIS
134.55
DET ATIS
124.875
PTK ATIS
125.025
YIP ATIS
127.425
KMTC ATIS
125.325 270.1
DETROIT APP CON
118.95 284.0



- NOTE: RADAR required.
- NOTE: RNAV 1.
- NOTE: DME/DME/IRU or GPS required.
- NOTE: Caution: Parachute jumping 6 NM northeast of PETTE WAYPOINT, 3 NM radius of NAPOLEON AIRPORT (3NP) at or below 17999 (SR-SS).
- NOTE: QBURT TRANSITION: Do not file, to be assigned by ATC only.

NOTE: Chart not to scale.

ARRIVAL ROUTE DESCRIPTION

HOSSA TRANSITION (HOSSA.PETTE2):

QBURT TRANSITION (QBURT.PETTE2):

TORRR TRANSITION (TORRR.PETTE2):

WWODD TRANSITION (WWODD.PETTE2):

LANDING CYQG, KONZ, KARB, KYIP, KTF, KDET: From PETTE on track 072° to cross SYREN at or above 4000, then on track 071°. Expect RADAR vectors to final approach course.

LANDING KPTK, KMTC, KOZW, KYLL: From PETTE on track 072° to cross SYREN at or above 4000, then on track 025°. Expect RADAR vectors to final approach course.

PETTE TWO ARRIVAL (RNAV)

PONTIAC, MICHIGAN

EC-1, 22 FEB 2024 to 21 MAR 2024

EC-1, 22 FEB 2024 to 21 MAR 2024

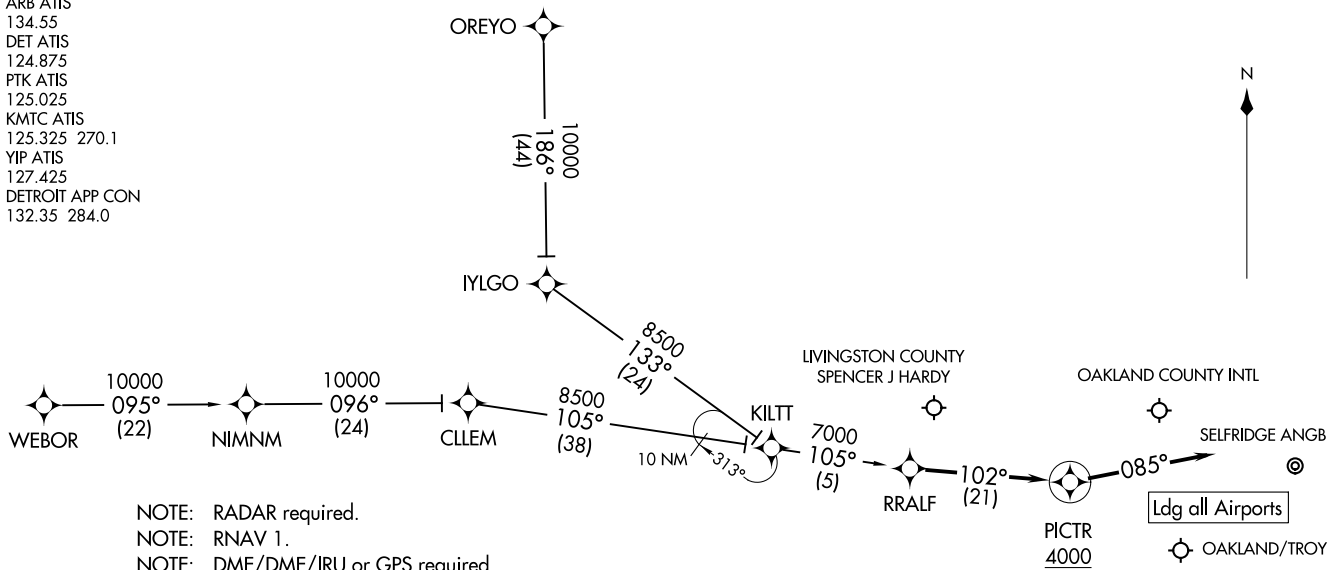
RRALF THREE ARRIVAL (RNAV)
(RRALF.RRALF3) 21MAY20

(RRALF.RRALF3) 20198
RRALF THREE ARRIVAL (RNAV)

AL-5052 (FAA)

PONTIAC, MICHIGAN

ARB ATIS
134.55
DET ATIS
124.875
PTK ATIS
125.025
KMTC ATIS
125.325 270.1
YIP ATIS
127.425
DETROIT APP CON
132.35 284.0



- NOTE: RADAR required.
- NOTE: RNAV 1.
- NOTE: DME/DME/IRU or GPS required.
- NOTE: CLLEM TRANSITION: Do not file, to be assigned by ATC only.

ARRIVAL ROUTE DESCRIPTION

- CLLEM TRANSITION (CLLEM.RRALF3)
- OREYO TRANSITION (OREYO.RRALF3)
- WEBOR TRANSITION (WEBOR.RRALF3)

LANDING ALL AIRPORTS: From RRALF on track 102° to cross PICTR at or above 4000, then on track 085°. Expect RADAR vectors to final approach course.

NOTE: Chart not to scale.

PONTIAC, MICHIGAN