

WAAS CH 87027 W32A	APP CRS 322°	Rwy Idg 3510 TDZE 545 Apt Elev 556
----------------------------------------	------------------------	---------------------------------------------------------------

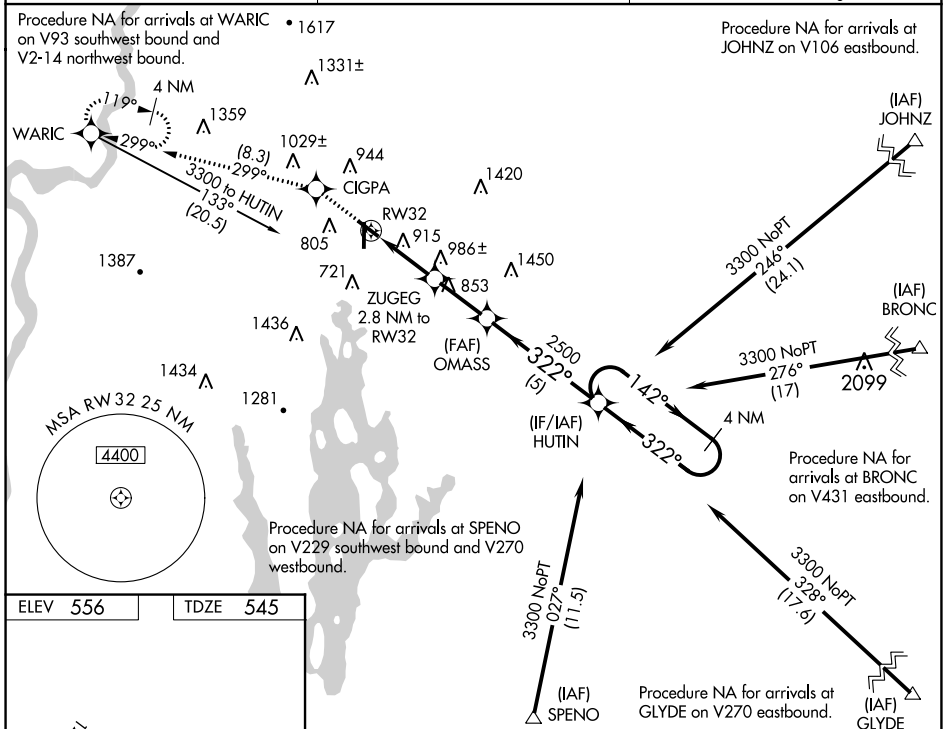
RNAV (GPS) RWY 32

ORANGE MUNI (O.R.E.)

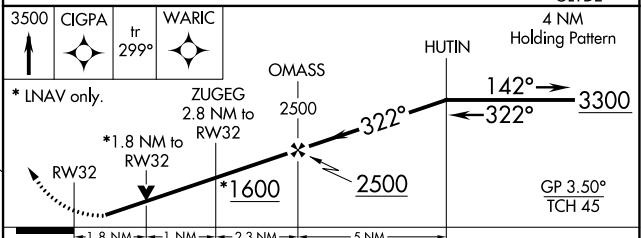
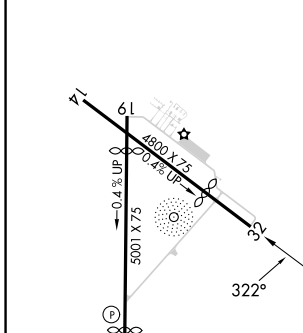
⚠ Circling to Rwy 1-19 NA at night. For uncompensated Baro-VNAV systems, LNAV/VNAV NA below -16°C (4°F) or above 54°C (130°F). DME/DME RNP-0.3 NA. Helicopter visibility reduction below 3/4 SM NA. Baro-VNAV and VDP NA when using Keene altimeter setting. When local altimeter setting not received, use KEENE altimeter setting and increase all DA 55 feet and all MDA 60 feet; increase LPV all Cats visibility 1/8 mile, LNAV/VNAV all Cats and LNAV and Circling Cat B visibility 1/4 mile.

MISSED APPROACH: Climb to 3500 direct CIGPA and on track 299° to WARIC and hold, continue climb-in-hold to 3500.

ASOS 135.675	BOSTON CENTER 123.75 338.2	UNICOM 122.8 (CTAF) 0
-------------------------------	---------------------------------------------	----------------------------------------



ELEV 556	TDZE 545
-----------------	-----------------



CATEGORY	A	B	C	D
LPV DA	873-1	328 (400-1)		NA
LNAV/VNAV DA	1288-2 1/4	743 (800-2 1/4)		NA
LNAV MDA	1240-1	695 (700-1)		NA
CIRCLING	1260-1 704 (800-1)	1320-1 764 (800-1)		NA

NE-1, 22 FEB 2024 to 21 MAR 2024

VOR/DME GDM 116.95 Chan 116 (Y)	APP CRS 292°	Rwy Idg TDZE Apt Elev N/A 556
-----------------------------------------------------	------------------------	------------------------------------------------------

VOR-A

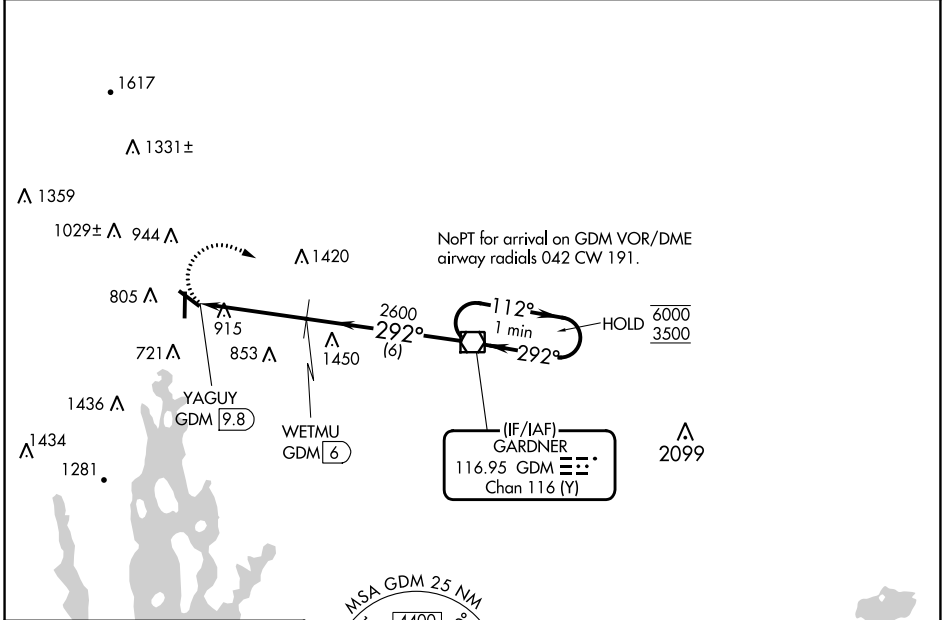
ORANGE MUNI(OR)E

DME required.

▼ Rwy 1, 19 helicopter visibility reduction below 1 SM NA. When local altimeter setting not received, use Keene altimeter setting and increase all MDAs 60 feet and Cat B visibility ¼ SM. Circling NA for Cats C/D to Rwys 14 and 32. Circling Rwy 1, 19 NA at night.

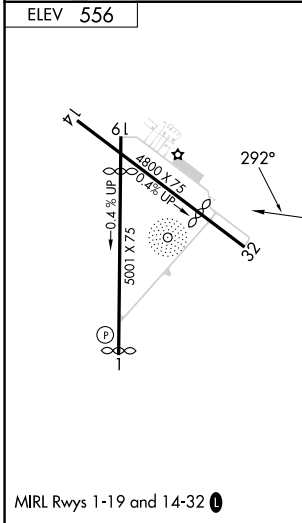
MISSED APPROACH: Climbing right turn to 3500 direct GDM VOR/DME and hold, continue climb-in-hold to 3500.

ASOS 135.675	BOSTON CENTER 123.75 338.2	UNICOM 122.8 (CTAF) 0
------------------------	--------------------------------------	---------------------------------



NE-1, 22 FEB 2024 to 21 MAR 2024

NE-1, 22 FEB 2024 to 21 MAR 2024



ELEV 556	MSA GDM 25 NM 4400 3300		One Minute Holding Pattern	
3500 GDM	GDM VOR/DME			
YAGUY GDM 9.8		WETMU GDM 6		6000 3500
3.8 NM		6 NM		
CATEGORY	A	B	C	D
CIRCLING	1460-1¼	904 (1000-1¼)	1640-3 1084 (1100-3)	1740-3 1184 (1200-3)