

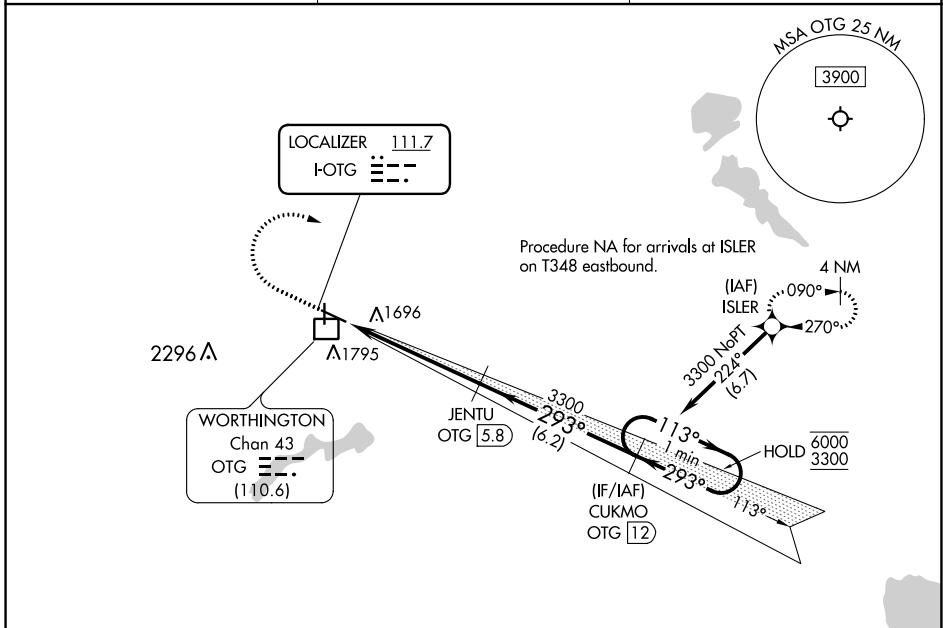
LOC I-OTG 111.7	APP CRS 293°	Rwy Idg TDZE Apt Elev 5500 1570 1574
---------------------------	------------------------	--

ILS or LOC RWY 29

WORTHINGTON MUNI (OTG)

DME required for LOC only. RNP APCH-GPS.	MALSR 	MISSED APPROACH: Climb to 2500 then climbing right turn to 3300 direct ISLER and hold.
Autopilot coupled approach NA below 1770.		

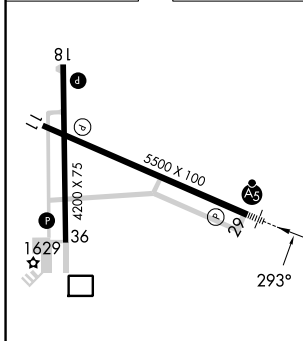
AWOS-3PT 121.075	MINNEAPOLIS CENTER 132.05 317.4	UNICOM 122.8 (CTAF) 0
----------------------------	---	---------------------------------



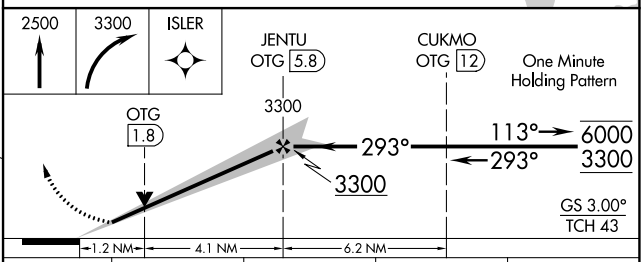
NC-1, 22 FEB 2024 to 21 MAR 2024

NC-1, 22 FEB 2024 to 21 MAR 2024

ELEV 1574	TDZE 1570
-----------	-----------



MIRL Rwy 18-36 0					
HIRL Rwy 11-29 0					
REIL Rwys 11, 18, and 36 0					
FAF to MAP 5.3 NM					
Knots	60	90	120	150	180
Min:Sec	5:18	3:32	2:39	2:07	1:46



CATEGORY	A	B	C	D
S-ILS 29	1770-1/2 200 (200-1/2)			
S-LOC 29	2000-1/2	430 (500-1/2)	2000-3/4	430 (500-3/4)
<input checked="" type="checkbox"/> CIRCLING	2100-1	526 (600-1)	2100-1 1/2	2320-2 1/2
			526 (600-1 1/2)	746 (800-2 1/2)

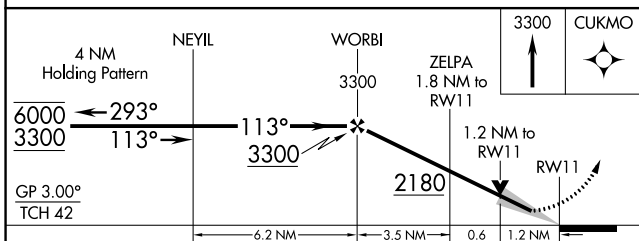
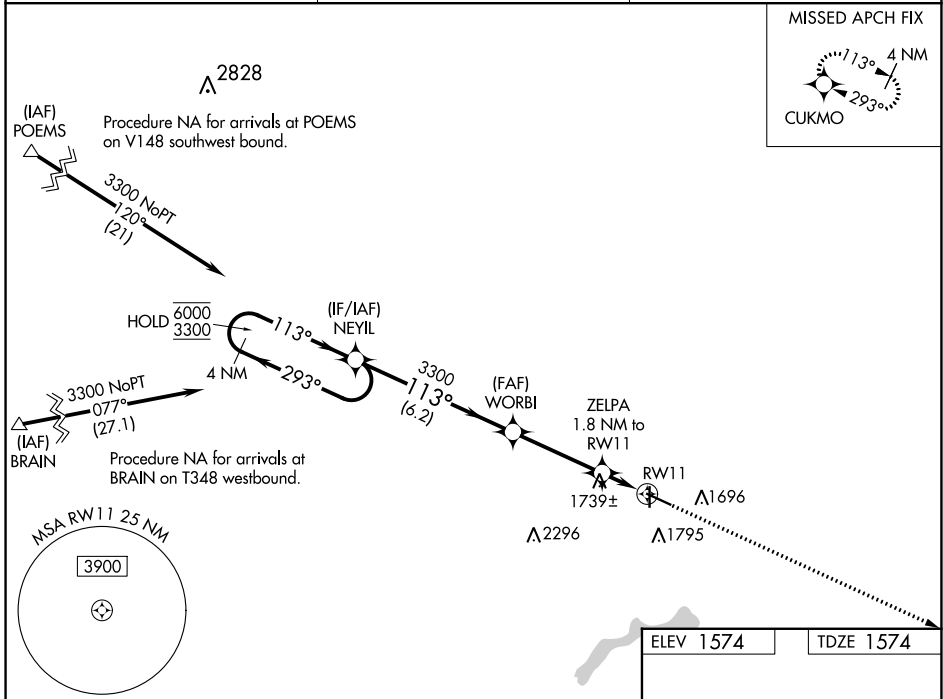
WAAS CH 58230 W11A	APP CRS 113°	Rwy Idg TDZE Apt Elev	5500 1574 1574
--	------------------------	-----------------------------	---

RNAV (GPS) RWY 11

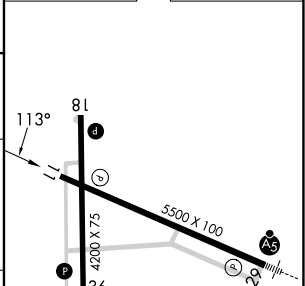
WORTHINGTON MUNI (OTG)

RNP APCH - GPS.		MISSED APPROACH: Climb to 3300 direct CUKMO and hold.
For uncompensated Baro-VNAV systems, LNAV/VNAV NA below -23°C or above 54°C.		

AWOS-3PT 121.075	MINNEAPOLIS CENTER 132.05 317.4	UNICOM 122.8 (CTAF)
----------------------------	---	-------------------------------



ELEV 1574	TDZE 1574
-----------	-----------



CATEGORY	A	B	C	D
LPV DA		1824-3/4	250 (300-3/4)	
LNAV/VNAV DA		1826-3/4	252 (300-3/4)	
LNAV MDA	2000-1	426 (500-1)	2000-1 1/4	426 (500-1 1/4)
CIRCLING	2100-1	526 (600-1)	2100-1 1/2	2320-2 1/2
			526 (600-1 1/2)	746 (800-2 1/2)

MIRL Rwy 18-36

HIRL Rwy 11-29

REIL Rws 11, 18, and 36

NC-1, 22 FEB 2024 to 21 MAR 2024

NC-1, 22 FEB 2024 to 21 MAR 2024

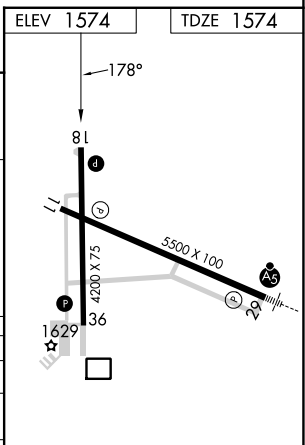
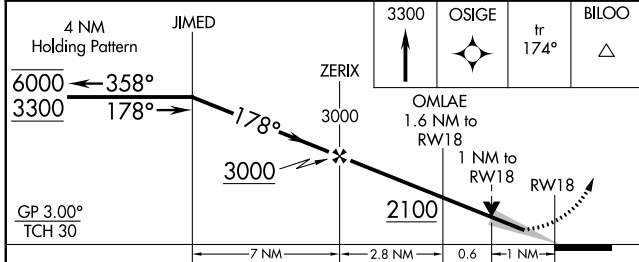
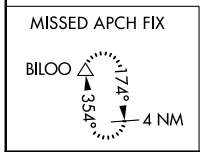
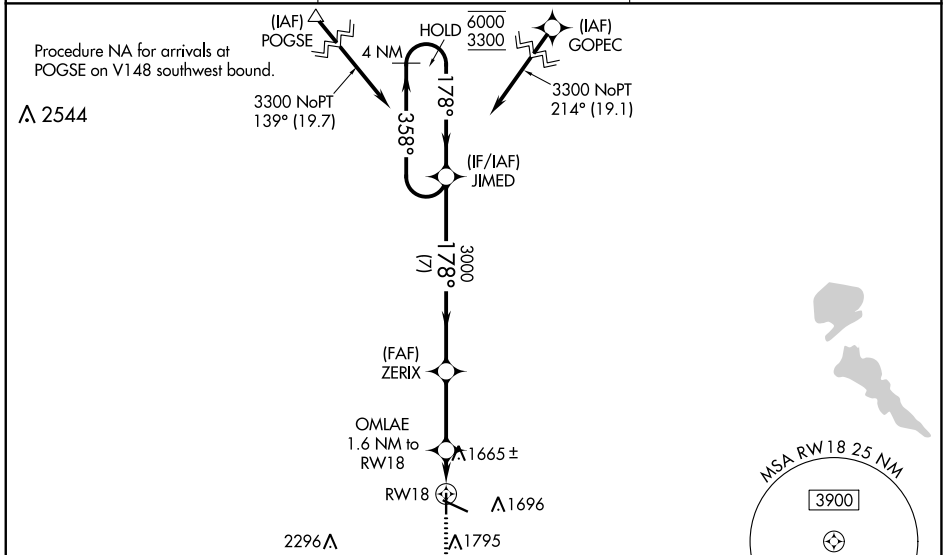
WAAS CH 93830 W18A	APP CRS 178°	Rwy Idg TDZE Apt Elev	4200 1574 1574
--	------------------------	-----------------------------	---

RNAV (GPS) RWY 18

WORTHINGTON MUNI (OTG)

RNP APCH-GPS. ▼ For uncompensated Baro-VNAV systems, LNAV/VNAV NA ▲ below -25°C or above 54°C.	MISSED APPROACH: Climb to 3300 direct OSIGE and on track 174° to BILOO and hold.
--	--

AWOS-3PT 121.075	MINNEAPOLIS CENTER 132.05 317.4	UNICOM 122.8 (CTAF) 0
----------------------------	---	---------------------------------



CATEGORY	A	B	C	D
LPV DA	1774-1		200 (200-1)	
LNAV/VNAV DA	1824-1		250 (300-1)	
LNAV MDA	1920-1		346 (400-1)	
C CIRCLING	2100-1	526 (600-1)	2100-1½ 526 (600-1½)	2320-2½ 746 (800-2½)

MIRL Rwy 18-36 **L**
HIRL Rwy 11-29 **L**
REIL Rws 11, 18, and 36 **L**

NC-1, 22 FEB 2024 to 21 MAR 2024

NC-1, 22 FEB 2024 to 21 MAR 2024

WAAS CH 45930 W29A	APP CRS 293°	Rwy Idg TDZE Apt Elev	5500 1570 1574
--	------------------------	-----------------------------	---

RNAV (GPS) RWY 29

WORTHINGTON MUNI (OTG)

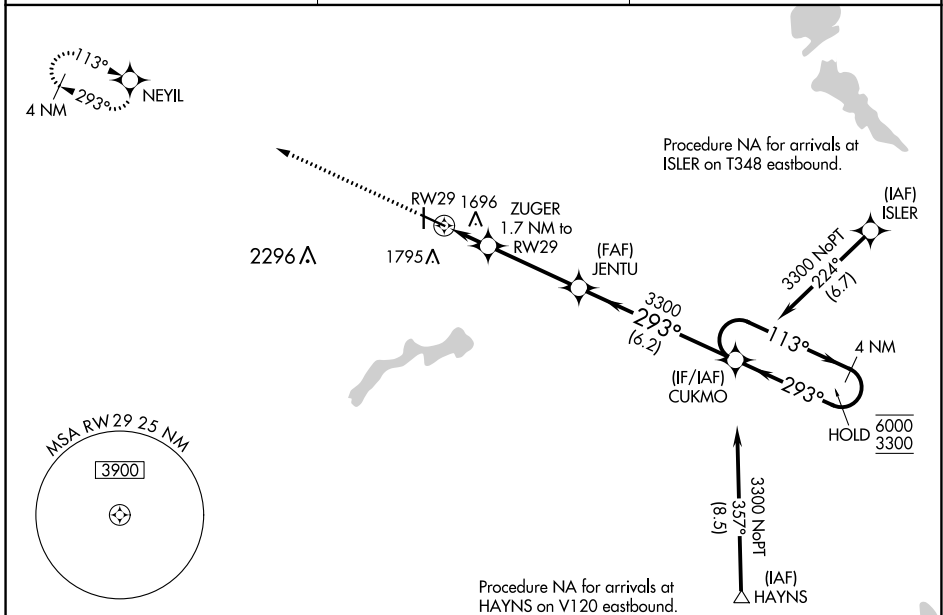
RNP APCH-GPS.

⚠ For uncompensated Baro-VNAV systems, LNAV/VNAV NA below -23°C or above 54°C. For inop ALS, increase LNAV/VNAV all Cats visibility to 7/5 SM.

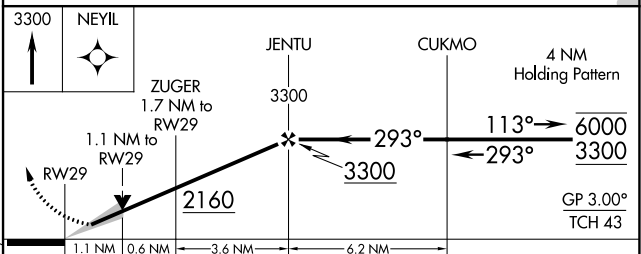
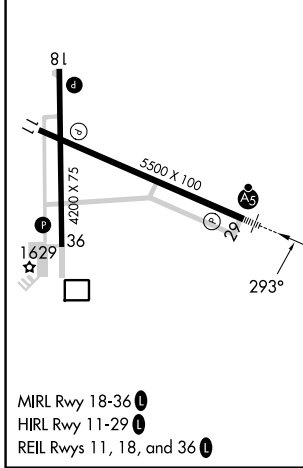
MALSRL

⚠ MISSED APPROACH: Climb to 3300 direct NEYIL and hold.

AWOS-3PT 121.075	MINNEAPOLIS CENTER 132.05 317.4	UNICOM 122.8 (CTAF) 0
----------------------------	---	---------------------------------



ELEV 1574	TDZE 1570
-----------	-----------



CATEGORY	A	B	C	D
LPV DA		1770-1/2	200 (200-1/2)	
LNAV/VNAV DA		1867-1/2	297 (300-1/2)	
LNAV MDA	1960-1/2	390 (400-1/2)	1960-5/8	390 (400-5/8)
CIRCLING	2100-1	526 (600-1)	2100-1 1/2 526 (600-1 1/2)	2320-2 1/2 746 (800-2 1/2)

NC-1, 22 FEB 2024 to 21 MAR 2024

NC-1, 22 FEB 2024 to 21 MAR 2024

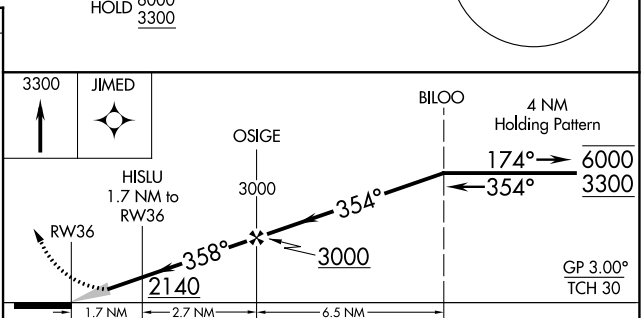
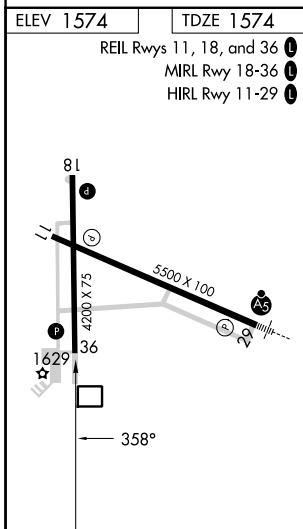
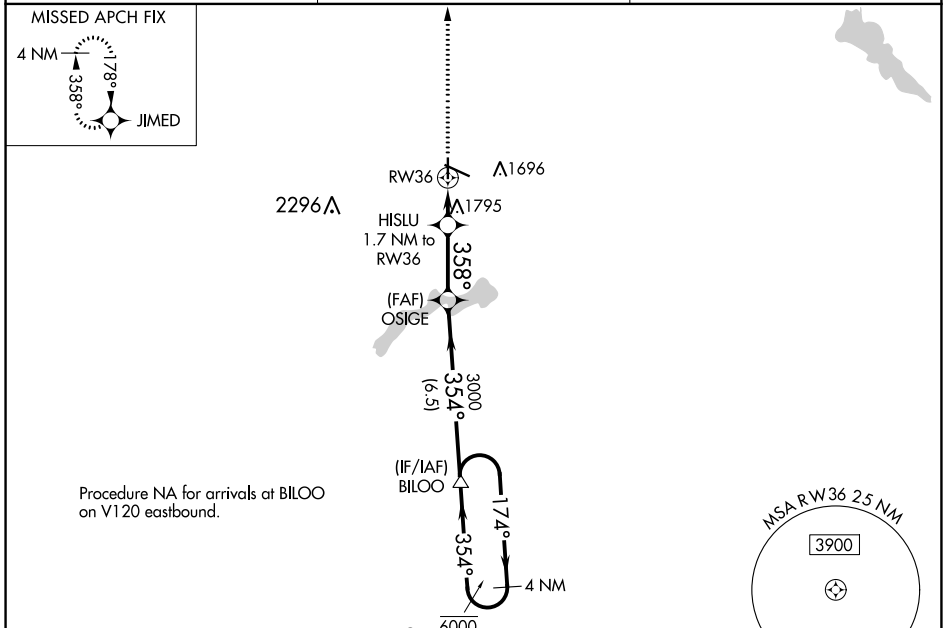
WAAS CH 99329 W36A	APP CRS 358°	Rwy Idg TDZE Apt Elev	4200 1574 1574
--	------------------------	-----------------------------	---

RNAV (GPS) RWY 36

WORTHINGTON MUNI (OTG)

RNP APCH-GPS.	MISSED APPROACH: Climb to 3300 direct JIMED and hold.
<p>For uncompensated Baro-VNAV systems, LNAV/VNAV NA below -24°C or above 54°C.</p>	

AWOS-3PT 121.075	MINNEAPOLIS CENTER 132.05 317.4	UNICOM 122.8 (CTAF) 0
----------------------------	---	---------------------------------



CATEGORY	A	B	C	D
LPV DA	1824-1 250 (300-1)			
LNAV/VNAV DA	2104-1½ 530 (600-1½)			
LNAV MDA	2060-1	486 (500-1)	2060-1¾	486 (500-1¾)
C CIRCLING	2100-1	526 (600-1)	2100-1½ 526 (600-1½)	2320-2½ 746 (800-2½)

NC-1, 22 FEB 2024 to 21 MAR 2024

NC-1, 22 FEB 2024 to 21 MAR 2024