

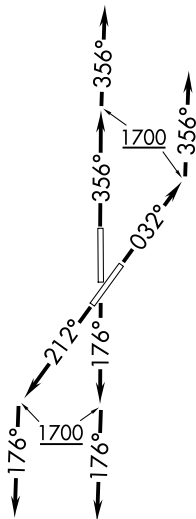
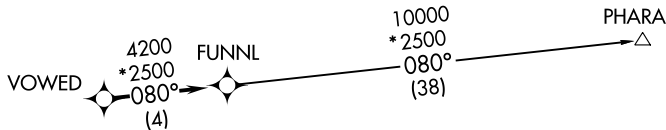
TAKEOFF MINIMUMS

Rwys 3, 18, 21, 36: Standard with minimum climb of 500' per NM to 1700.

**TOP ALTITUDE:
Assigned by ATC**

AWOS-3PT
119.55
GND CON
121.6
WESTHEIMER TOWER★
118.0
OKE CITY DEP CON
120.45 288.325

NOTE: RADAR required.
NOTE: DME/DME/IRU or GPS required.
NOTE: RNAV 1.



DEPARTURE ROUTE DESCRIPTON

TAKEOFF RUNWAY 3: Climb heading 032° to 1700, then left turn heading 356° or as assigned by ATC, expect RADAR vectors to VOWED. Thence

TAKEOFF RUNWAY 18: Climb heading 176° to 1700, then heading 176° or as assigned by ATC, expect RADAR vectors to VOWED. Thence

TAKEOFF RUNWAY 21: Climb heading 212° to 1700, then left turn heading 176° or as assigned by ATC, expect RADAR vectors to VOWED. Thence

TAKEOFF RUNWAY 36: Climb heading 356° to 1700, then heading 356° or as assigned by ATC, expect RADAR vectors to VOWED. Thence

. . . . on track 080° to FUNNLL, then on (transition). Maintain 3000 or as assigned by ATC. Expect filed altitude 10 minutes after departure.

PHARA TRANSITION (FUNNLL3.PHARA)

NOTE: Chart not to scale.

FUNNLL THREE DEPARTURE (RNAV)
 (FUNNLL3.FUNNLL) 07ZDEC17

UNIVERSITY OF OKLAHOMA WESTHEIMER (OUTN)
 NORMAN, OKLAHOMA

FUNNLL THREE DEPARTURE (RNAV)
 23166
 (FUNNLL3.FUNNLL)

UNIVERSITY OF OKLAHOMA WESTHEIMER (OUTN)
 NORMAN, OKLAHOMA
 A1-5672 (FAA)

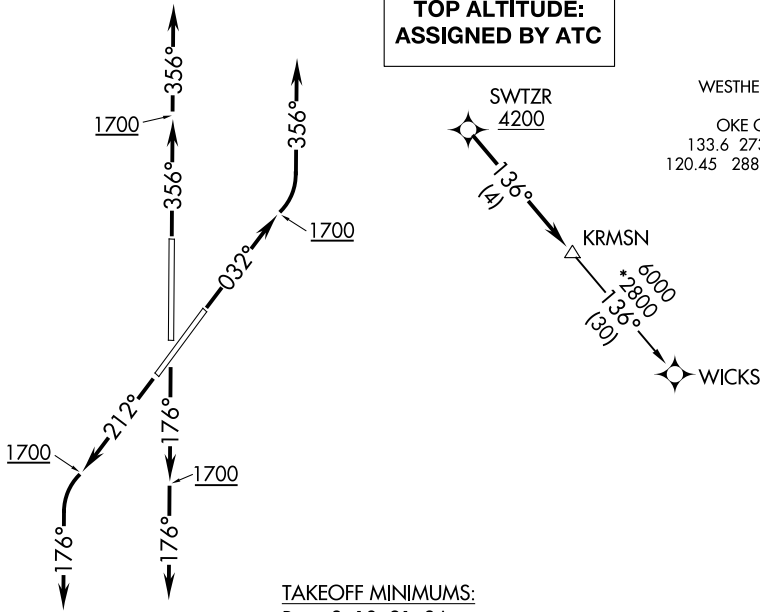
(KRMSN4.KRMSN) 23166

KRMSN FOUR DEPARTURE (RNAV)

UNIVERSITY OF OKLAHOMA WESTHEIMER (OUN)
AL-5672 (FAA) NORMAN, OKLAHOMA

**TOP ALTITUDE:
ASSIGNED BY ATC**

AWOS-3PT 119.55
GND CON 121.6
WESTHEIMER TOWER ★ 118.0
OKE CITY DEP CON 133.6 273.52 (NORTH)
120.45 288.325 (SOUTH)



TAKEOFF MINIMUMS:

Rwys 3, 18, 21, 36:

Standard with minimum climb of 500' per NM to 1700.

- NOTE: RADAR required.
- NOTE: DME/DME/IRU or GPS required.
- NOTE: RNAV 1.

NOTE: Chart not to scale.



DEPARTURE ROUTE DESCRIPTION

TAKEOFF RUNWAY 3: Climb on heading 032° to 1700, then left turn heading 356° or as assigned by ATC, expect RADAR vectors to cross SWTZR at or above 4200, thence . . .

TAKEOFF RUNWAY 18: Climb on heading 176° to 1700, then heading 176° or as assigned by ATC, expect RADAR vectors to cross SWTZR at or above 4200, thence . . .

TAKEOFF RUNWAY 21: Climb on heading 212° to 1700, then left turn heading 176° or as assigned by ATC, expect RADAR vectors to cross SWTZR at or above 4200, thence . . .

TAKEOFF RUNWAY 36: Climb on heading 356° to 1700, then heading 356° or as assigned by ATC, expect RADAR vectors to cross SWTZR at or above 4200, thence . . .

. . . on track 136° to KRMSN, then on (transition). Maintain ATC assigned altitude. Expect filed altitude 10 minutes after departure.

WICKS TRANSITION (KRMSN4.WICKS)

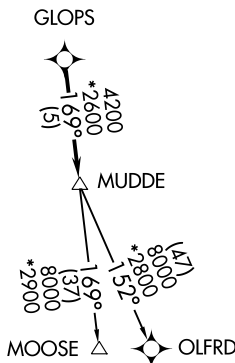
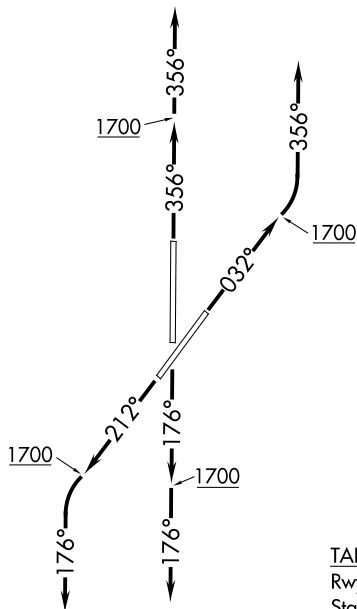
KRMSN FOUR DEPARTURE (RNAV)
(KRMSN4.KRMSN) 07OCT21

NORMAN, OKLAHOMA
UNIVERSITY OF OKLAHOMA WESTHEIMER (OUN)

SC-1, 22 FEB 2024 to 21 MAR 2024

SC-1, 22 FEB 2024 to 21 MAR 2024

**TOP ALTITUDE:
ASSIGNED BY ATC**



AWOS-3PT 119.55
 GND CON 121.6
 WESTHEIMER TOWER* 118.0
 OKE CITY DEP CON 120.45 288.325

TAKEOFF MINIMUMS

Rwys 3, 18, 21, 36:
Standard with minimum climb of 500' per NM to 1700.

- NOTE: RADAR required.
- NOTE: DME/DME/IRU or GPS required.
- NOTE: RNAV 1.

NOTE: Chart not to scale.

DEPARTURE ROUTE DESCRIPTOR

- TAKEOFF RUNWAY 3: Climb on heading 032° to 1700, then left turn heading 356° or as assigned by ATC, expect RADAR vectors to GLOPS, thence
- TAKEOFF RUNWAY 18: Climb on heading 176° to 1700, then heading 176° or as assigned by ATC, expect RADAR vectors to GLOPS, thence
- TAKEOFF RUNWAY 21: Climb on heading 212° to 1700, then left turn heading 176° or as assigned by ATC, expect RADAR vectors to GLOPS, thence
- TAKEOFF RUNWAY 36: Climb on heading 356° to 1700, then heading 356° or as assigned by ATC, expect RADAR vectors to GLOPS, thence

. . . . on track 169° to MUDDDE, then on (transition). Maintain 3000 or as assigned by ATC. Expect filed altitude 10 minutes after departure.

- MOOSE TRANSITION (MUDDE3.MOOSE):
- OLFRD TRANSITION (MUDDE3.OLFRD):

OLGUY THREE DEPARTURE (RNAV)
(OLGUY3.OLGUY) 07DEC17

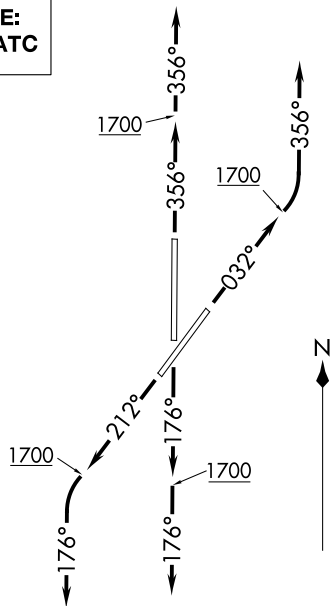
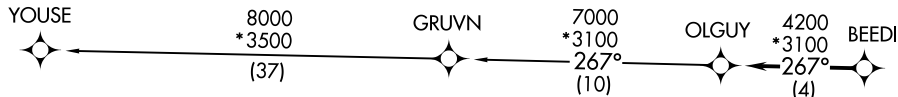
NORMAN, OKLAHOMA
UNIVERSITY OF OKLAHOMA WESTHEIMER (OTN)

AWOS-3PT
119.55
GND CON
121.6
WESTHEIMER TOWER ★
118.0
OKE CITY DEP CON
120.45 288.325

TAKEOFF MINIMUMS

Rwys 3, 18, 21, 36:
Standard with minimum climb of 500' per NM to 1700.

**TOP ALTITUDE:
ASSIGNED BY ATC**



DEPARTURE ROUTE DESCRIPTION

- TAKEOFF RUNWAY 3: Climb on heading 032° to 1700, then left turn heading 356° or as assigned by ATC, expect RADAR vectors to BEEDI, thence
- TAKEOFF RUNWAY 18: Climb on heading 176° to 1700, then heading 176° or as assigned by ATC, expect RADAR vectors to BEEDI, thence
- TAKEOFF RUNWAY 21: Climb on heading 212° to 1700, then left turn heading 176° or as assigned by ATC, expect RADAR vectors to BEEDI, thence
- TAKEOFF RUNWAY 36: Climb on heading 356° to 1700, then heading 356° or as assigned by ATC, expect RADAR vectors to BEEDI, thence

. . . . on track 267° to OLGUY, then on (transition). Maintain 3000 or as assigned by ATC. Expect filed altitude 10 minutes after departure.

GRUVN TRANSITION (OLGUY3.GRUVN)
YOUSE TRANSITION (OLGUY3.YOUSE)

- NOTE: RADAR required.
- NOTE: DME/DME/IRU or GPS required.
- NOTE: RNAV 1.

NOTE: Chart not to scale.

OLGUY THREE DEPARTURE (RNAV)
(OLGUY3.OLGUY) 23166

NORMAN, OKLAHOMA
UNIVERSITY OF OKLAHOMA WESTHEIMER (OTN)
AL-5672 (FAA)

RDHWK THREE DEPARTURE (RNAV)

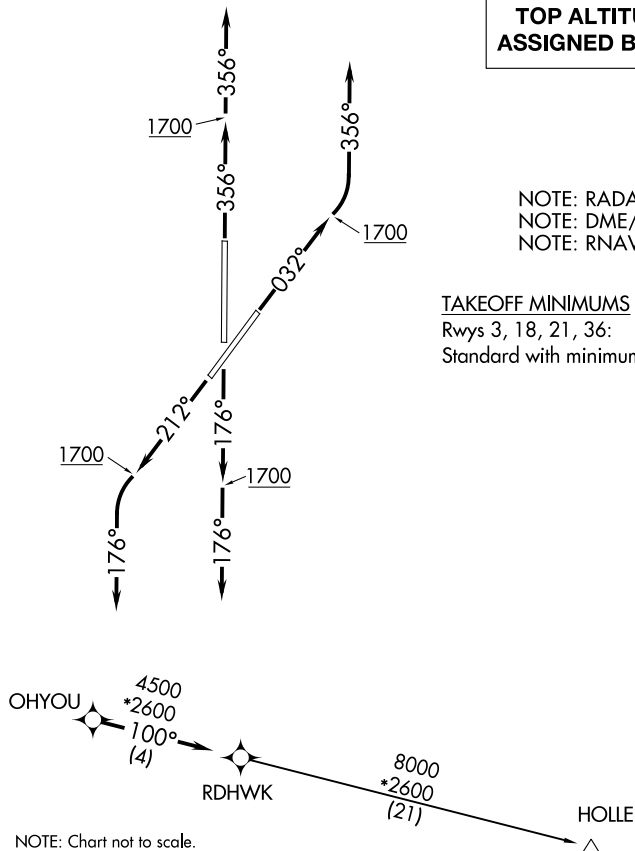
**TOP ALTITUDE:
ASSIGNED BY ATC**

AWOS-3PT
119.55
GND CON
121.6
WESTHEIMER TOWER ★
118.0
OKE CITY DEP CON
120.45 288.325

NOTE: RADAR required.
NOTE: DME/DME/IRU or GPS required.
NOTE: RNAV 1.

TAKEOFF MINIMUMS

Rwys 3, 18, 21, 36:
Standard with minimum climb of 500' per NM to 1700.



DEPARTURE ROUTE DESCRIPTION

- TAKEOFF RUNWAY 3: Climb on heading 032° to 1700, then left turn heading 356° or as assigned by ATC, expect RADAR vectors to OHYOU, thence . . .
- TAKEOFF RUNWAY 18: Climb on heading 176° to 1700, then heading 176° or as assigned by ATC, expect RADAR vectors to OHYOU, thence . . .
- TAKEOFF RUNWAY 21: Climb on heading 212° to 1700, then left turn heading 176° or as assigned by ATC, expect RADAR vectors to OHYOU, thence . . .
- TAKEOFF RUNWAY 36: Climb on heading 356° to 1700, then heading 356° or as assigned by ATC, expect RADAR vectors to OHYOU, thence . . .

. . . on track 100° to RDHWK, then on (transition). Maintain 3000 or as assigned by ATC. Expect filed altitude 10 minutes after departure.

HOLLE TRANSITION (RDHWK3.HOLLE)

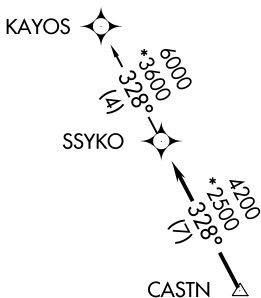
(SSYKO3.SSYKO) 23166

SSYKO THREE DEPARTURE (RNAV)

UNIVERSITY OF OKLAHOMA WESTHEIMER (OUN)
AL-5672 (FAA)
NORMAN, OKLAHOMA

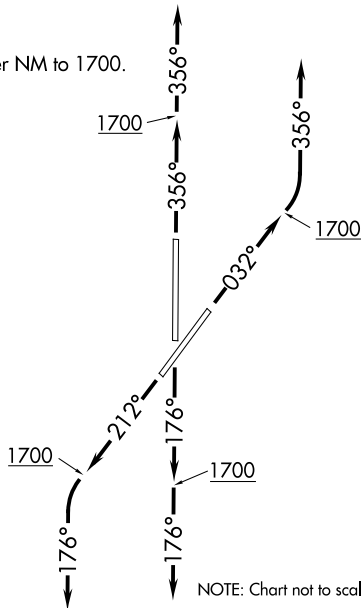
AWOS-3PT
119.55
GND CON
121.6
WESTHEIMER TOWER *
118.0
OKE CITY DEP CON
120.45 288.325

**TOP ALTITUDE:
ASSIGNED BY ATC**



TAKEOFF MINIMUMS

Rwys 3, 18, 21, 36: Standard with minimum climb of 500' per NM to 1700.



- NOTE: RADAR required.
- NOTE: DME/DME/IRU or GPS required.
- NOTE: RNAV 1.

NOTE: Chart not to scale.



DEPARTURE ROUTE DESCRIPTION

TAKEOFF RUNWAY 3: Climb on heading 032° to 1700, then left turn heading 356° or as assigned by ATC, expect RADAR vectors to CASTN, thence . . .

TAKEOFF RUNWAY 18: Climb on heading 176° to 1700, then heading 176° or as assigned by ATC, expect RADAR vectors to CASTN, thence . . .

TAKEOFF RUNWAY 21: Climb on heading 212° to 1700, then left turn heading 176° or as assigned by ATC, expect RADAR vectors to CASTN, thence . . .

TAKEOFF RUNWAY 36: Climb on heading 356° to 1700, then heading 356° or as assigned by ATC, expect RADAR vectors to CASTN, thence . . .

. . . on track 328° to SSYKO, then on (transition). Maintain 3000 or as assigned by ATC. Expect filed altitude 10 minutes after departure.

KAYOS TRANSITION (SSYKO3.KAYOS)

SSYKO THREE DEPARTURE (RNAV)

(SSYKO3.SSYKO) 07DEC17

NORMAN, OKLAHOMA
UNIVERSITY OF OKLAHOMA WESTHEIMER (OUN)

SC-1, 22 FEB 2024 to 21 MAR 2024

SC-1, 22 FEB 2024 to 21 MAR 2024

(STPHN3.STPHN) 23166

STPHN THREE DEPARTURE (RNAV)

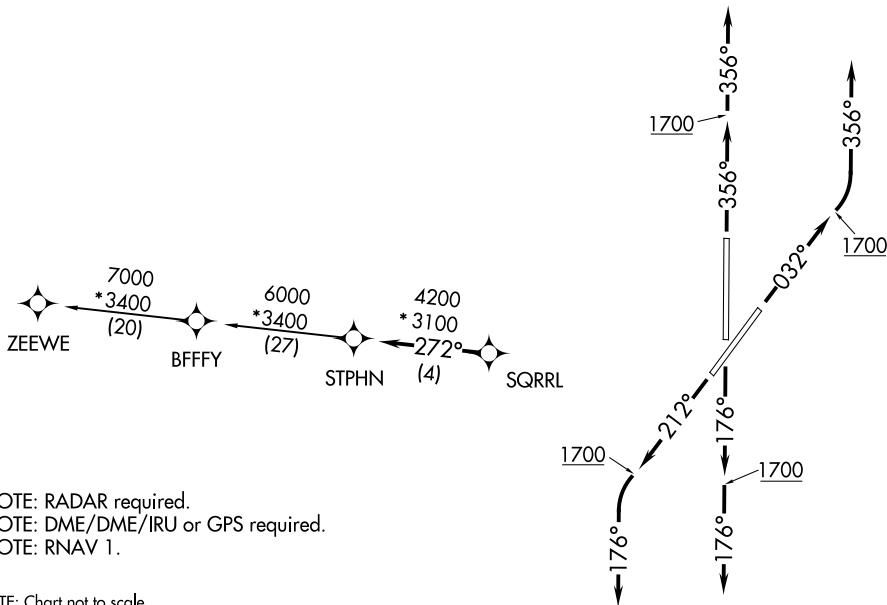
UNIVERSITY OF OKLAHOMA WESTHEIMER (OUN)
AL-5672 (FAA)
NORMAN, OKLAHOMA

AWOS-3PT
119.55
GND CON
121.6
WESTHEIMER TOWER *
118.0
OKE CITY DEP CON
120.45 288.325

**TOP ALTITUDE:
ASSIGNED BY ATC**

TAKEOFF MINIMUMS

Rwys 3, 18, 21, 36: Standard
with minimum climb of 500'
per NM to 1700.



NOTE: RADAR required.
NOTE: DME/DME/IRU or GPS required.
NOTE: RNAV 1.

NOTE: Chart not to scale.

DEPARTURE ROUTE DESCRIPTION

TAKEOFF RUNWAY 3: Climb on heading 032° to 1700, then left turn heading 356° or as assigned by ATC, expect RADAR vectors to SQRRRL, thence . . .

TAKEOFF RUNWAY 18: Climb on heading 176° to 1700, then heading 176° or as assigned by ATC, expect RADAR vectors to SQRRRL, thence . . .

TAKEOFF RUNWAY 21: Climb on heading 212° to 1700, then left turn heading 176° or as assigned by ATC, expect RADAR vectors to SQRRRL, thence . . .

TAKEOFF RUNWAY 36: Climb on heading 356° to 1700, then heading 356° or as assigned by ATC, expect RADAR vectors to SQRRRL, thence . . .

. . . on track 272° to STPHN, then on (transition). Maintain 3000 or as assigned by ATC. Expect filed altitude 10 minutes after departure.

BFFFY TRANSITION (STPHN3.BFFFY)
ZEEWE TRANSITION (STPHN3.ZEEWE)

STPHN THREE DEPARTURE (RNAV)
(STPHN3.STPHN) 07DEC17

NORMAN, OKLAHOMA
UNIVERSITY OF OKLAHOMA WESTHEIMER (OUN)

SC-1, 22 FEB 2024 to 21 MAR 2024

SC-1, 22 FEB 2024 to 21 MAR 2024

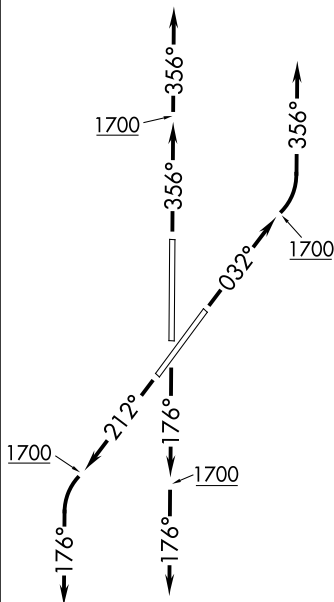
(TEBRD3.TEBRD) 23166

TEBRD THREE DEPARTURE (RNAV) AL-5672 (FAA)

UNIVERSITY OF OKLAHOMA WESTHEIMER (OUN)
NORMAN, OKLAHOMA

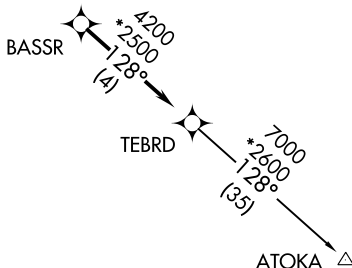
**TOP ALTITUDE:
ASSIGNED BY ATC**

AWOS-3PT 119.55
GND CON 121.6
WESTHEIMER TOWER * 118.0
OKE CITY DEP CON 120.45 288.325



TAKEOFF MINIMUMS

Rwys 3, 18, 21, 36: Standard with minimum climb of 500' per NM to 1700.



- NOTE: RADAR required.
- NOTE: DME/DME/IRU or GPS required.
- NOTE: RNAV 1.

NOTE: Chart not to scale.

DEPARTURE ROUTE DESCRIPTION

TAKEOFF RUNWAY 3: Climb on heading 032° to 1700, then left turn heading 356° or as assigned by ATC, expect RADAR vectors to BASSR, thence

TAKEOFF RUNWAY 18: Climb on heading 176° to 1700, then heading 176° or as assigned by ATC, expect RADAR vectors to BASSR, thence

TAKEOFF RUNWAY 21: Climb on heading 212° to 1700, then left turn heading 176° or as assigned by ATC, expect RADAR vectors to BASSR, thence

TAKEOFF RUNWAY 36: Climb on heading 356° to 1700, then heading 356° or as assigned by ATC, expect RADAR vectors to BASSR, thence

. . . . on track 128° to TEBRD, then on (transition). Maintain 3000 or as assigned by ATC. Expect filed altitude 10 minutes after departure.

ATOKA TRANSITION (TEBRD3.ATOKA)

TEBRD THREE DEPARTURE (RNAV)
(TEBRD3.TEBRD) 07DEC17

NORMAN, OKLAHOMA
UNIVERSITY OF OKLAHOMA WESTHEIMER (OUN)

SC-1, 22 FEB 2024 to 21 MAR 2024

SC-1, 22 FEB 2024 to 21 MAR 2024

(THRPE3.THRPE) 23166

THRPE THREE DEPARTURE (RNAV)

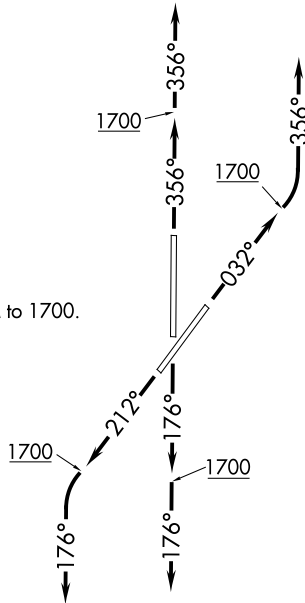
UNIVERSITY OF OKLAHOMA WESTHEIMER (OUN)
AL-5672 (FAA) NORMAN, OKLAHOMA

AWOS-3PT
119.55
GND CON
121.6
WESTHEIMER TOWER *
118.0
OKE CITY DEP CON
120.45 288.325

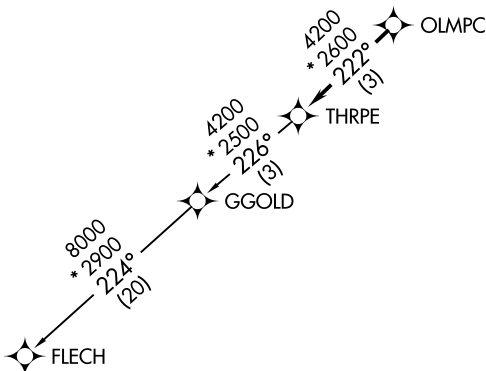
**TOP ALTITUDE:
ASSIGNED BY ATC**

TAKEOFF MINIMUMS

Rwys 3, 18, 21, 36: Standard with minimum climb of 500' per NM to 1700.



NOTE: RADAR required.
NOTE: DME/DME/IRU or GPS required.
NOTE: RNAV 1.



NOTE: Chart not to scale.



DEPARTURE ROUTE DESCRIPTION

TAKEOFF RUNWAY 3: Climb on heading 032° to 1700, then left turn heading 356° or as assigned by ATC, expect RADAR vectors to OLMP, thence . . .

TAKEOFF RUNWAY 18: Climb on heading 176° to 1700, then heading 176° or as assigned by ATC, expect RADAR vectors to OLMP, thence . . .

TAKEOFF RUNWAY 21: Climb on heading 212° to 1700, then left turn heading 176° or as assigned by ATC, expect RADAR vectors to OLMP, thence . . .

TAKEOFF RUNWAY 36: Climb on heading 356° to 1700, then heading 356° or as assigned by ATC, expect RADAR vectors to OLMP, thence . . .
. . . on track 222° to THRPE, then on (transition). Maintain 3000 or as assigned by ATC.
Expect filed altitude 10 minutes after departure.

FLECH TRANSITION (THRPE3.FLECH)

GGOLD TRANSITION (THRPE3.GGOLD)

THRPE THREE DEPARTURE (RNAV)
(THRPE3.THRPE) 07DEC17

NORMAN, OKLAHOMA
UNIVERSITY OF OKLAHOMA WESTHEIMER (OUN)

SC-1, 22 FEB 2024 to 21 MAR 2024

SC-1, 22 FEB 2024 to 21 MAR 2024

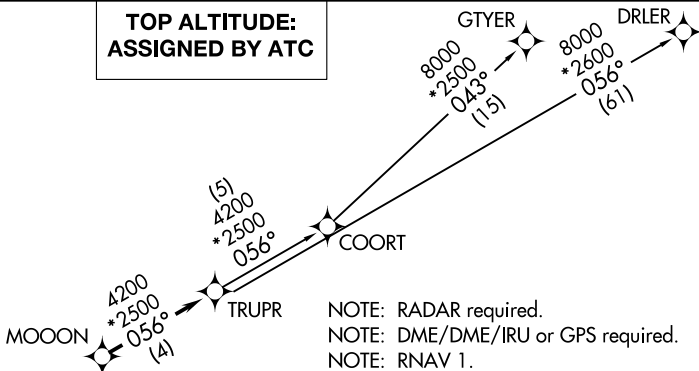
(TRUPR3.TRUPR) 23166

TRUPR THREE DEPARTURE (RNAV)

UNIVERSITY OF OKLAHOMA WESTHEIMER (OUN)
AL-5672 (FAA) NORMAN, OKLAHOMA

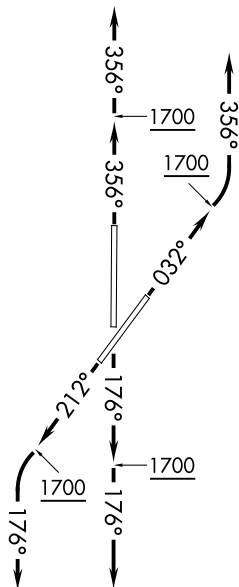
AWOS-3PT
119.55
GND CON
121.6
WESTHEIMER TOWER *
118.0
OKE CITY DEP CON
120.45 288.325

**TOP ALTITUDE:
ASSIGNED BY ATC**



TAKEOFF MINIMUMS

Rwys 3, 18, 21, 36: Standard with minimum climb of 500' per NM to 1700.



NOTE: Chart not to scale.

DEPARTURE ROUTE DESCRIPTION

TAKEOFF RUNWAY 3: Climb on heading 032° to 1700, then left turn heading 356° or as assigned by ATC, expect RADAR vectors to MOOON, thence

TAKEOFF RUNWAY 18: Climb on heading 176° to 1700, then heading 176° or as assigned by ATC, expect RADAR vectors to MOOON, thence

TAKEOFF RUNWAY 21: Climb on heading 212° to 1700, then left turn heading 176° or as assigned by ATC, expect RADAR vectors to MOOON, thence

TAKEOFF RUNWAY 36: Climb on heading 356° to 1700, then heading 356° or as assigned by ATC, expect RADAR vectors to MOOON, thence

. . . . on track 056° to TRUPR, then on (transition). Maintain 3000 or as assigned by ATC. Expect filed altitude 10 minutes after departure.

COORT TRANSITION (TRUPR3.COORT)

DRLER TRANSITION (TRUPR3.DRLER)

GTYER TRANSITION (TRUPR3.GTYER)

TRUPR THREE DEPARTURE (RNAV)

(TRUPR3.TRUPR) 07DEC17

NORMAN, OKLAHOMA
UNIVERSITY OF OKLAHOMA WESTHEIMER (OUN)

SC-1, 22 FEB 2024 to 21 MAR 2024

SC-1, 22 FEB 2024 to 21 MAR 2024

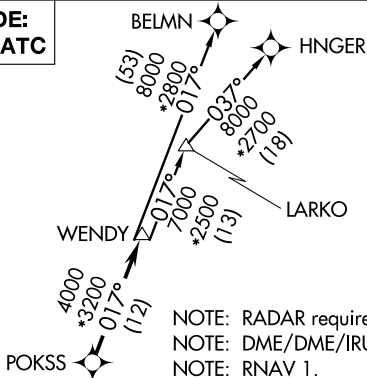
(WENDY3.WENDY) 23166

WENDY THREE DEPARTURE (RNAV)

UNIVERSITY OF OKLAHOMA WESTHEIMER (OUN)
AL-5672 (FAA) NORMAN, OKLAHOMA

AWOS-3PT
119.55
GND CON
121.6
WESTHEIMER TOWER ★
118.0
OKE CITY DEP CON
120.45 288.325

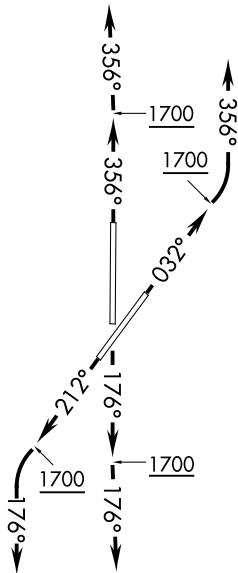
**TOP ALTITUDE:
ASSIGNED BY ATC**



NOTE: RADAR required.
NOTE: DME/DME/IRU or GPS required.
NOTE: RNAV 1.

TAKEOFF MINIMUMS

Rwys 3, 18, 21, 36: Standard with minimum climb of 500' per NM to 1700.



NOTE: Chart not to scale.

DEPARTURE ROUTE DESCRIPTION

TAKEOFF RUNWAY 3: Climb heading 032° to 1700, then left turn heading 356° or as assigned by ATC, expect RADAR vectors to POKSS, thence . . .

TAKEOFF RUNWAY 18: Climb heading 176° to 1700, then heading 176° or as assigned by ATC, expect RADAR vectors to POKSS, thence . . .

TAKEOFF RUNWAY 21: Climb heading 212° to 1700, then left turn heading 176° or as assigned by ATC, expect RADAR vectors to POKSS, thence . . .

TAKEOFF RUNWAY 36: Climb heading 356° to 1700, then heading 356° or as assigned by ATC, expect RADAR vectors to POKSS, thence . . .

. . . on track 017° to WENDY, then on (transition). Maintain 3000 or as assigned by ATC. Expect filed altitude 10 minutes after departure.

BELMN TRANSITION (WENDY3.BELMN)

HNGER TRANSITION (WENDY3.HNGER)

LARKO TRANSITION (WENDY3.LARKO)

WENDY THREE DEPARTURE (RNAV)

(WENDY3.WENDY) 07DEC17

NORMAN, OKLAHOMA
UNIVERSITY OF OKLAHOMA WESTHEIMER (OUN)

SC-1, 22 FEB 2024 to 21 MAR 2024

SC-1, 22 FEB 2024 to 21 MAR 2024