

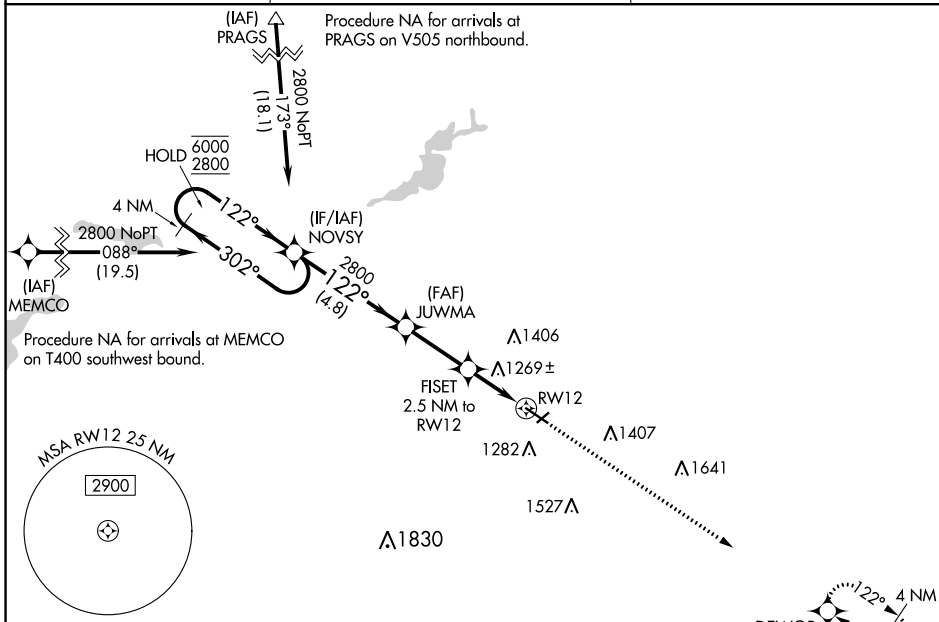
WAAS CH 82627 W12A	APP CRS 122°	Rwy Idg 5500 TDZE 1127 Apt Elev 1145
--	------------------------	---

RNAV (GPS) RWY 12

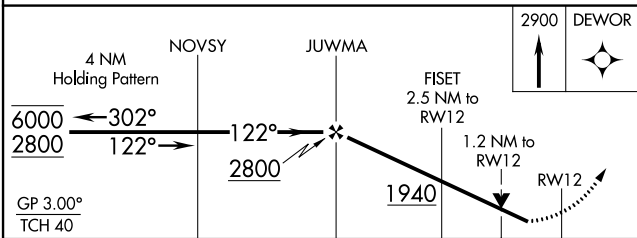
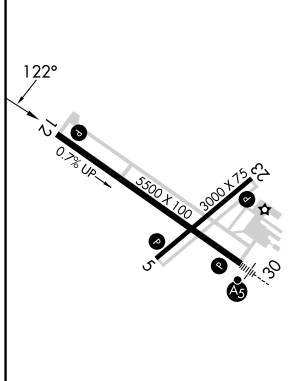
OWATONNA DEGNER RGNL (OWA)

RNP APCH - GPS.	MISSED APPROACH: Climb to 2900 direct DEWOR and hold.
<p>⚠ Rwy 12 helicopter visibility reduction below 3/4 SM NA. For uncompensated Baro-VNAV systems, LNAV/VNAV NA below -17°C or above 54°C.</p>	

AWOS-3 128.325	ROCHESTER APP CON * 119.8 251.125	UNICOM 122.7 (CTAF)
--------------------------	---	-------------------------------



ELEV 1145	TDZE 1127
-----------	-----------



CATEGORY	A	B	C	D
LPV DA		1420-7/8	293 (300-7/8)	
LNAV/VNAV DA		1400-7/8	273 (300-7/8)	
LNAV MDA	1520-1	393 (400-1)	1520-1 1/8	393 (400-1 1/8)
C CIRCLING	1640-1 495 (500-1)	1700-1 555 (600-1)	1720-1 1/2 575 (600-1 1/2)	1880-2 1/4 735 (800-2 3/4)

MIRL Rwy 5-23 **⚠**
REIL Rwy 5, 12, and 23 **⚠**
HIRL Rwy 12-30 **⚠**

NC-1, 22 FEB 2024 to 21 MAR 2024


NC-1, 22 FEB 2024 to 21 MAR 2024

WAAS CH 86627 W30A	APP CRS 302°	Rwy Idg 5500 TDZE 1145 Apt Elev 1145
--	------------------------	---

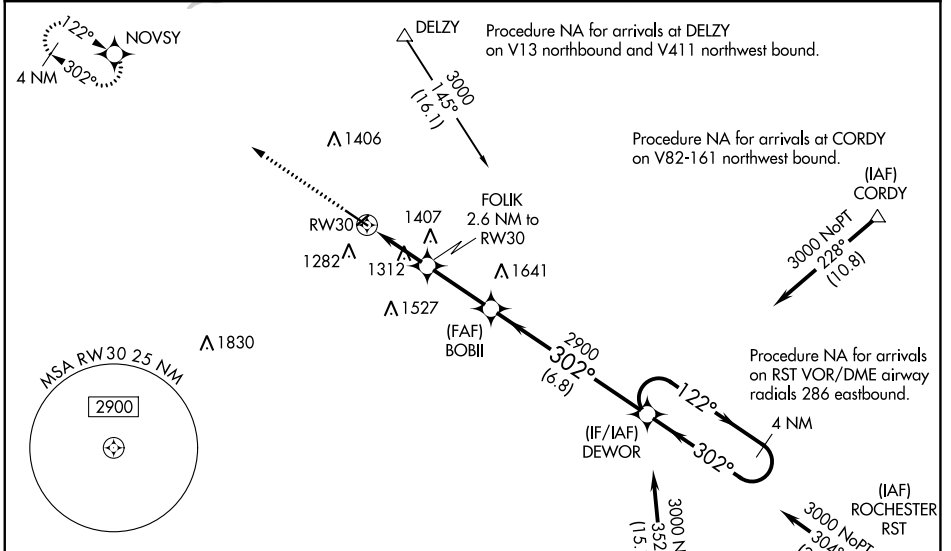
RNAV (GPS) RWY 30

OWATONNA DEGNER RGNL (OWA)

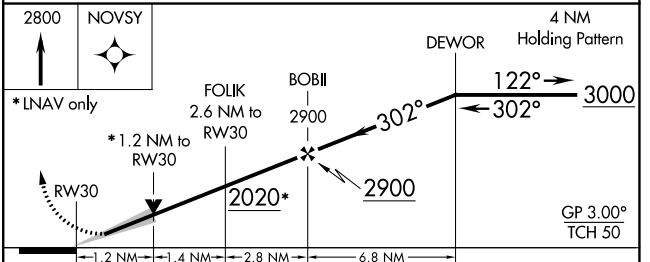
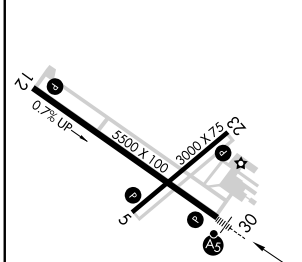
⚠ For uncompensated Baro-VNAV systems, LNAV/VNAV NA below -17°C (2°F) or above 54°C (130°F). DME/DME/RNP-0.3 NA. When local altimeter setting not received, use Fairbault altimeter setting and increase all DA 41 feet and all MDA 60 feet. Increase LNAV/VNAV all Cats visibility to 1½ mile, increase LNAV Cats C/D visibility to 1 mile, Cat C Circling visibility to ¾ mile and Cat D visibility to 2½ mile. VDP and Baro-VNAV NA when using Fairbault altimeter setting. For inop MALSR increase LNAV/VNAV all Cats visibility to 1½ miles. For inop MALSR, when using Fairbault altimeter setting, increase LNAV/VNAV all Cats visibility to 1½ mile, LNAV Cats C/D visibility to 1¾ mile.

MALSR

MISSED APPROACH:
 Climb to 2800 direct NOVSY and hold.

AWOS-3 128.325	ROCHESTER APP CON ★ 119.8 251.125	UNICOM 122.7 (CTAF) ①
--------------------------	---	---------------------------------



ELEV 1145	TDZE 1145
-----------	-----------



CATEGORY	RWY 30			
	A	B	C	D
LPV DA	1345-½		200 (200-½)	
LNAV/VNAV DA	1567-1		422 (500-1)	
LNAV MDA	1580-½	435 (500-½)	1580-¾	435 (500-¾)
CIRCLING	1640-1	1700-1	1720-1½	1880-2¼
	495 (500-1)	555 (600-1)	575 (600-1½)	735 (800-2¼)

MIRL Rwy 5-23 ①
 REIL Rwy 5, 12 and 23 ①
 HIRL Rwy 12-30 ①

NC-1, 22 FEB 2024 to 21 MAR 2024

NC-1, 22 FEB 2024 to 21 MAR 2024

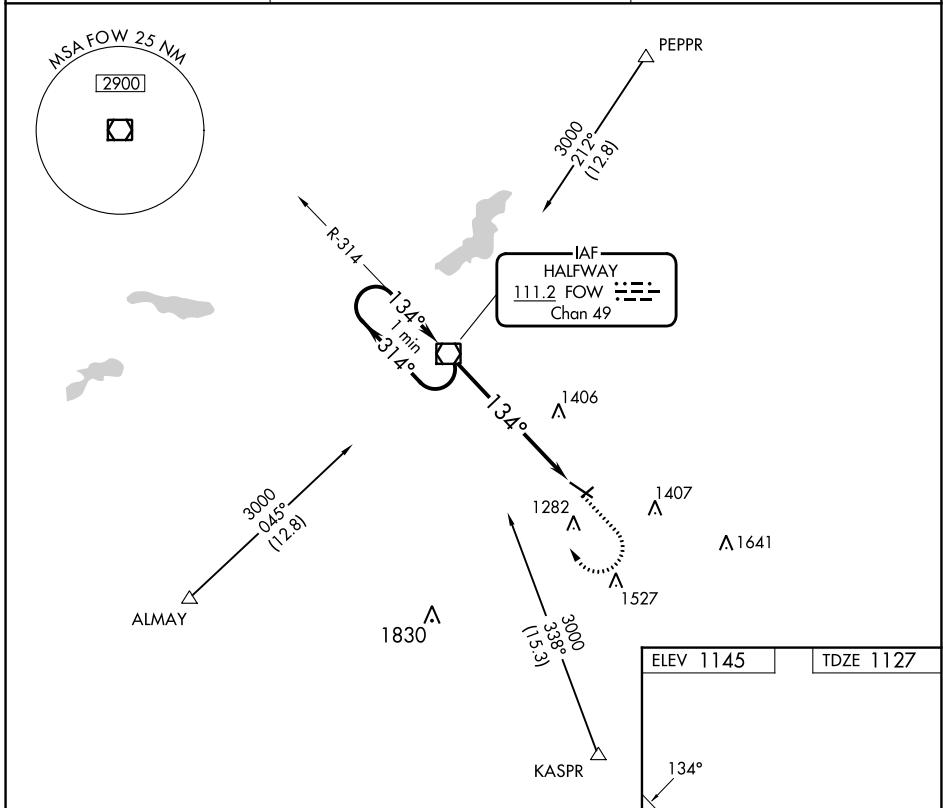
VOR/DME FOW	APP CRS	Rwy Idg	5500
111.2	134°	TDZE	1127
Chan 49		Apt Elev	1145

VOR RWY 12

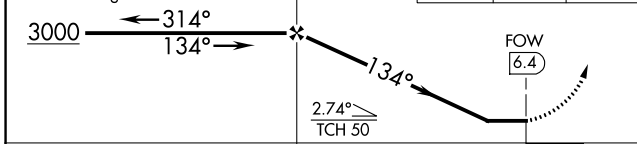
OWATONNA DEGNER RGNL (OWA)

NA MISSED APPROACH Climb to 2000 then climbing right turn to 3000 direct FOW VOR/DME and hold.

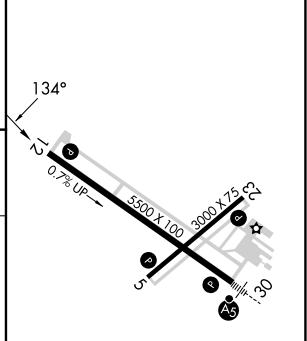
AWOS-3 128.325	ROCHESTER APP CON * 119.8 251.125	UNICOM 122.7 (CTAF) 0
--------------------------	---	---------------------------------



VGSI and descent angles not coincident (VGSI Angle 3.00/TCH 40).
One Minute Holding Pattern



ELEV 1145	TDZE 1127
-----------	-----------



MIRL Rwy 5-23 0	
REIL Rwys 5, 12, and 23 0	
HIRL Rwy 12-30 0	
FAF to MAP 6.4 NM	
Knots	60 90 120 150 180
Min:Sec	6:24 4:16 3:12 2:34 2:08

NC-1, 22 FEB 2024 to 21 MAR 2024

NC-1, 22 FEB 2024 to 21 MAR 2024