

LOC/DME I-OCX <b>109.55</b> Chan 32 (Y)	APP CRS <b>005°</b>	Rwy ldg <b>5301</b> TDZE <b>721</b> Apt Elev <b>730</b>
---	------------------------	---

# ILS or LOC RWY 36

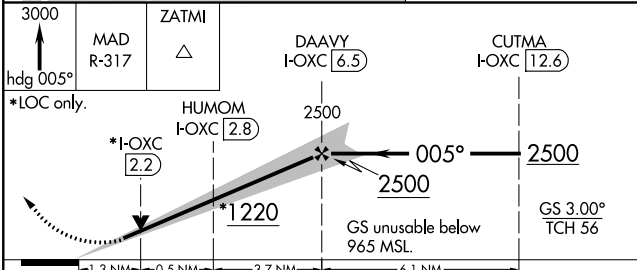
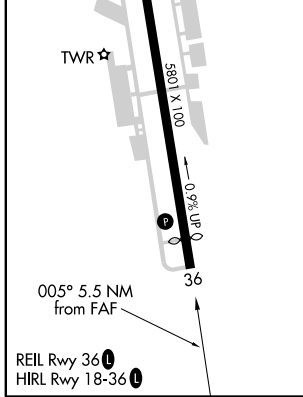
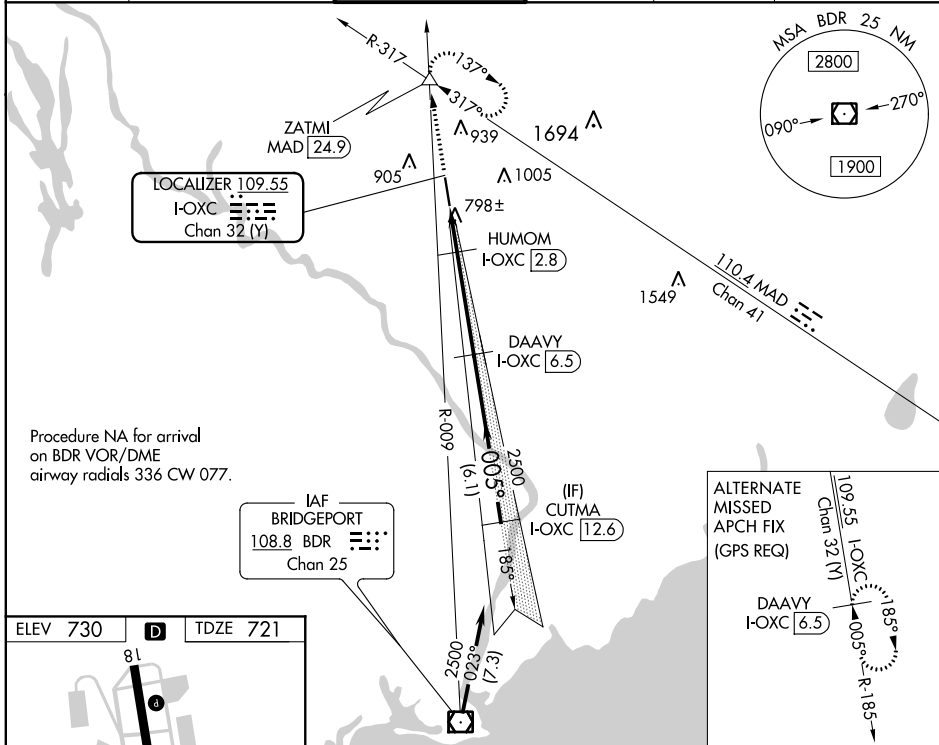
WATERBURY-OXFORD (OXC)

DME required.

▲ NA Rwy 36 helicopter visibility reduction below ¾ SM NA.

MISSED APPROACH: Climb to 3000 on heading 005° and MAD VOR/DME R-317 to ZATMI INT/MAD 24.9 DME and hold. Continue climb-in-hold to 3000.

ATIS <b>132.975</b>	NEW YORK APP CON <b>124.075 343.65</b>	OXFORD TOWER ★ <b>118.475 (CTAF)</b> <b>U</b>	GND CON <b>121.65</b>	CLNC DEL <b>121.65</b>	UNICOM <b>122.95</b>
------------------------	---	--	--------------------------	---------------------------	-------------------------



CATEGORY	A	B	C	D
S-ILS 36	971-¾ 250 (300-¾)			
S-LOC 36	1140-1	419 (500-1)	1140-1½	419 (500-1½)
<b>C</b> CIRCLING	1300-1	570 (600-1)	1380-1¾ 650 (700-1¾)	1460-2¼ 730 (800-2¼)

NE-1, 09 SEP 2021 to 07 OCT 2021

NE-1, 09 SEP 2021 to 07 OCT 2021

WAAS CH <b>42901</b> <b>W18A</b>	APP CRS <b>185°</b>	Rwy Idg <b>5801</b> TDZE <b>730</b> Apt Elev <b>730</b>
--	------------------------	---

# RNAV (GPS) RWY 18

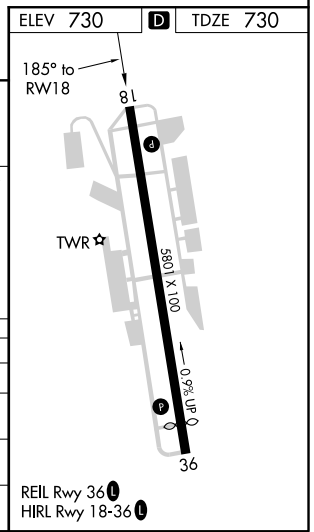
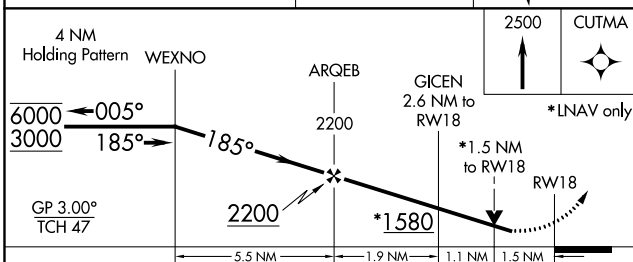
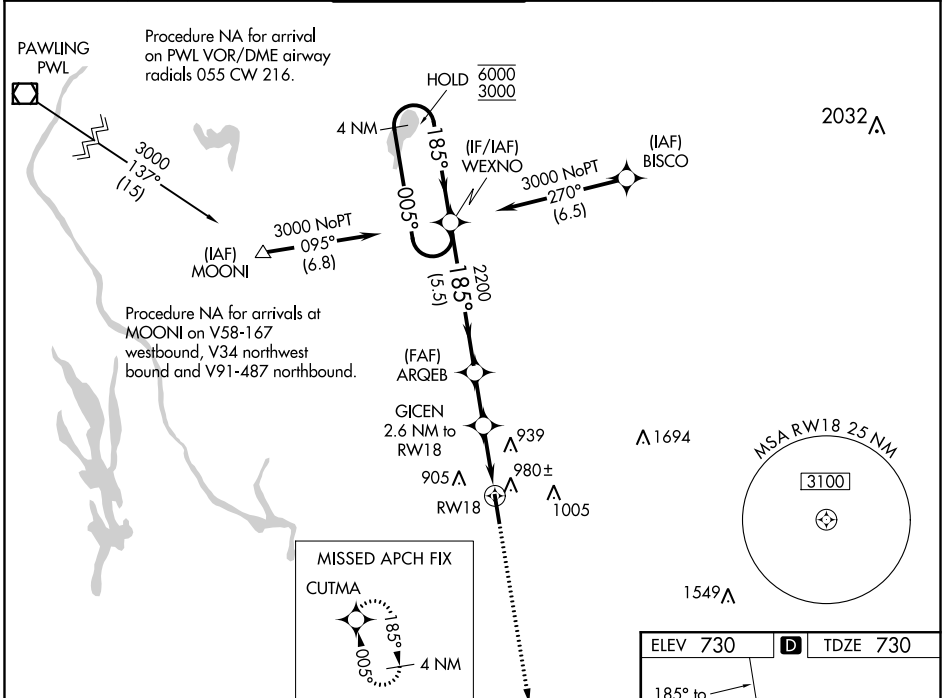
WATERBURY-OXFORD (OXC)

RNP APCH.

▼ Rwy 18 helicopter visibility reduction below 3/4 SM NA.  
▲ For uncompensated Baro-VNAV systems, LNAV/VNAV NA below -16°C or above 54°C.

MISSED APPROACH: Climb to 2500 direct CUTMA and hold.

ATIS <b>132.975</b>	NEW YORK APP CON <b>124.075 343.65</b>	OXFORD TOWER ★ <b>118.475</b> (CTAF) <b>0</b>	GND CON <b>121.65</b>	CLNC DEL <b>121.65</b>	UNICOM <b>122.95</b>
------------------------	---	--	--------------------------	---------------------------	-------------------------



CATEGORY	A	B	C	D
LPV DA	1140-1 1/8		410 (500-1 1/8)	
LNAV/VNAV DA	1141-1 1/8		411 (500-1 1/8)	
LNAV MDA	1240-1 510 (600-1)		1240-1 3/8 510 (600-1 3/8)	
CIRCLING	1300-1 570 (600-1)		1380-1 3/4 650 (700-1 3/4) 1460-2 1/4 730 (800-2 1/4)	

NE-1, 09 SEP 2021 to 07 OCT 2021

NE-1, 09 SEP 2021 to 07 OCT 2021

