

NEW YORK APP CON
124.075 343.65
BDR ATIS
119.15
HVN ATIS
133.65

ROCKDALE
112.6 RKA
Chan 73
N42°27.98'-W75°14.35'
L-32-33, H-10-11-12

ALBANY
115.3 ALB
Chan 100
N42°44.84'-W73°48.19'
L-32-33-34, H-10-11-12

ATHOS
N42°14.82'
W73°48.73'

CHESTER
115.1 CTR
Chan 98

PAWLING
114.3 PWL
Chan 90
N41°46.19'-W73°36.03'

DE LANCEY
112.1 DNY
Chan 58
N42°10.70'-W74°57.42'
L-33, H-10-11-12

KINGSTON
117.6 IGN
Chan 123

LOVES
N41°32.33'
W73°29.29'
Expect to cross at 6000'

WATERBURY-OXFORD

TWEED-NEW HAVEN

NOTE: Chart not to scale.

ARRIVAL DESCRIPTION

ALBANY TRANSITION (ALB.BDR1): From over ALB VORTAC via ALB R-194 to ATHOS INT, then via PWL R-354 to PWL VOR/DME. Thence

DELANCEY TRANSITION (DNY.BDR1): From over DNY VOR/DME via DNY R-096 to PETER INT, then via RKA R-127 to CYPER INT, then via PWL R-316 to PWL VOR/DME. Thence

ROCKDALE TRANSITION (RKA.BDR1): From over RKA VOR/DME via RKA R-127 to CYPER INT, then via PWL R-316 to PWL VOR/DME. Thence

. . . . From over PWL VOR/DME via PWL R-172 to LOVES INT. Then via BDR R-336 to DENNA INT. Expect radar vectors to the final approach course.

CARMEL
116.6 CMK
Chan 113

BRIDGEPORT
108.8 BDR
Chan 25

NOTE: This procedure applicable to jet aircraft only.

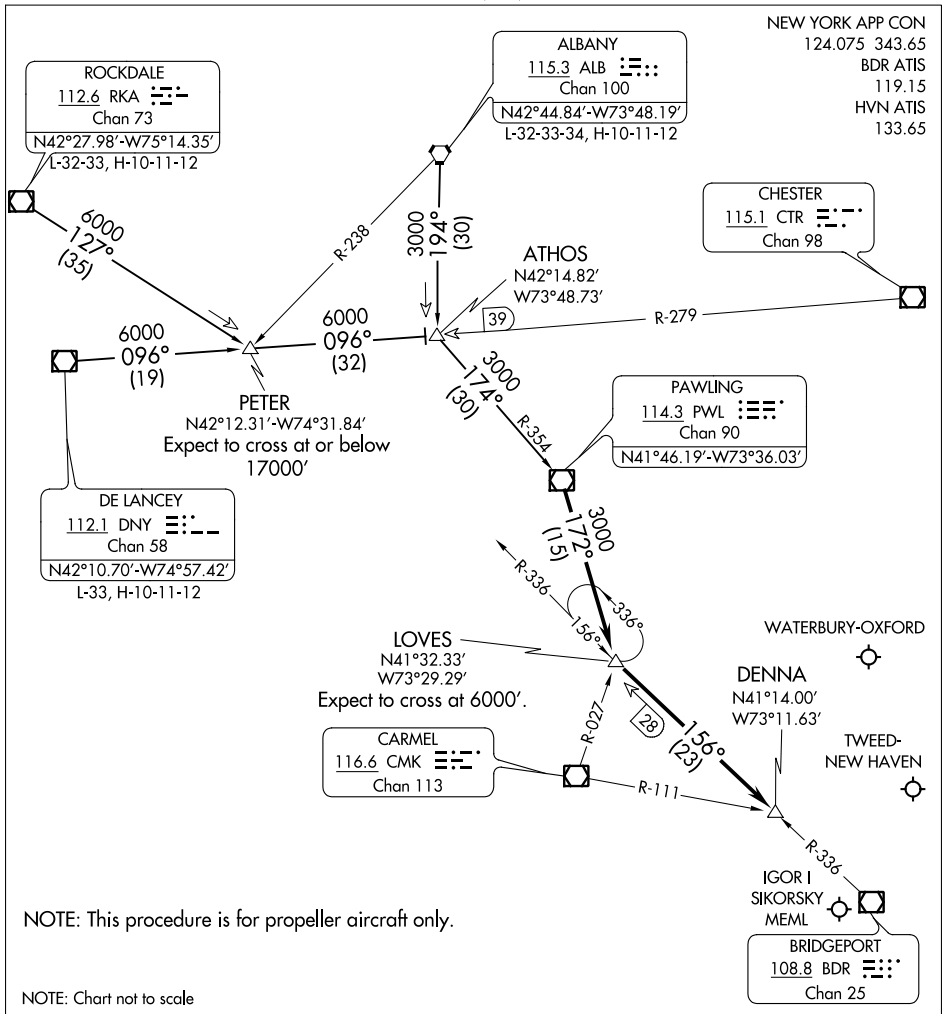
NE-1, 09 SEP 2021 to 07 OCT 2021

NE-1, 09 SEP 2021 to 07 OCT 2021

DENNA TWO ARRIVAL

AL-621 (FAA)

BRIDGEPORT, CONNECTICUT



NE-1, 09 SEP 2021 to 07 OCT 2021

NE-1, 09 SEP 2021 to 07 OCT 2021

NOTE: This procedure is for propeller aircraft only.

NOTE: Chart not to scale

ALBANY TRANSITION (ALB.DENNA2): From over ALB VORTAC via ALB R-194 to ATHOS INT, then via PWL R-354 to PWL VOR/DME. Thence....

DELANCEY TRANSITION (DNY.DENNA2): From over DNY VOR/DME via DNY R-096 to ATHOS INT, then via PWL R-354 to PWL VOR/DME. Thence....

ROCKDALE TRANSITION (RKA.DENNA2): From over RKA VOR/DME via RKA R-127 to PETER INT, then via DNY R-096 to ATHOS INT, then via PWL R-354 to PWL VOR/DME. Thence....

....From over PWL VOR/DME via PWL R-172 to LOVES INT. Then via BDR R-336 to DENNA INT. Expect radar vectors to final approach course.

DENNA TWO ARRIVAL

BRIDGEPORT, CONNECTICUT