

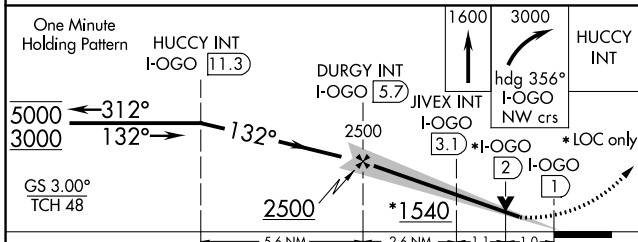
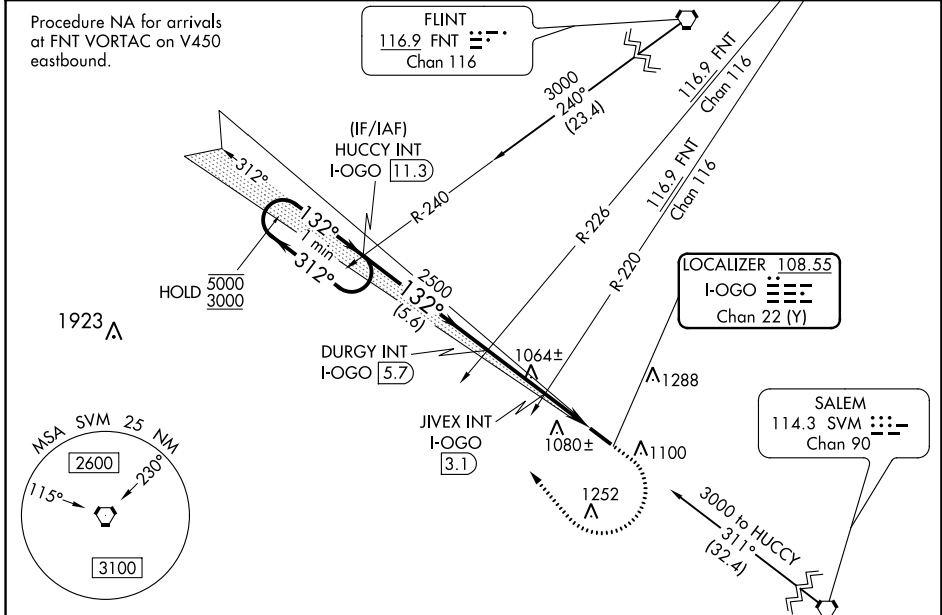
LOC/DME I-OGO 108.55 Chan 22 (Y)	APP CRS 132°	Rwy Idg 5002 TDZE 962 Apt Elev 962
--	------------------------	---

ILS or LOC RWY 13

LIVINGSTON COUNTY SPENCER J HARDY (OZW)

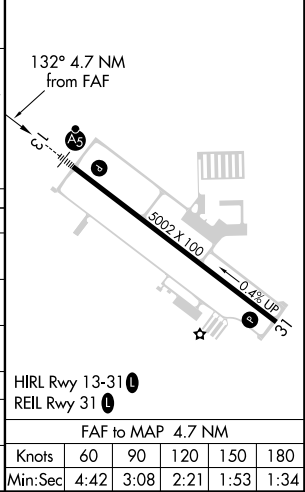
<p>▼ For inop ALS, increase LOC Cat C and D visibility to 1½ SM, and JIVEX fix minimums S-13 Cat C and D visibility to 1 SM.</p> <p>▲ NA</p>	<p>MALS R</p>	<p>MISSED APPROACH: Climb to 1600 then climbing right turn to 3000 heading 356° and I-OGO NW course to HUCCY INT/ I-OGO 11.3 DME and hold.</p>
--	---------------	--

AWOS-3 118.875	DETROIT APP CON 132.35 284.0	CLNC DEL 121.725 (GCO)	UNICOM 123.0 (CTAF) 0
--------------------------	--	----------------------------------	---------------------------------



ELEV 962	TDZE 962
----------	----------

CATEGORY	A	B	C	D
S-ILS 13	1162-½		200 (200-½)	
S-LOC 13	1540-½ 578 (600-½)		1540-¼ 578 (600-¼)	
CIRCLING	1540-1 578 (600-1)		1540-1½ 578 (600-1½)	1540-2 578 (600-2)
JIVEX FIX MINIMUMS (DUAL VOR RECEIVERS OR DME REQUIRED)				
S-LOC 13	1320-½ 358 (400-½)		1320-5/8 358 (400-5/8)	
CIRCLING	1400-1 438 (500-1)	1420-1 458 (500-1)	1420-1½ 458 (500-1½)	1520-2 558 (600-2)



ILS or LOC RWY 13

EC-1, 05 DEC 2019 to 02 JAN 2020

EC-1, 05 DEC 2019 to 02 JAN 2020

HIRL Rwy 13-31 0	REIL Rwy 31 0
FAF to MAP 4.7 NM	
Knots	60 90 120 150 180
Min:Sec	4:42 3:08 2:21 1:53 1:34

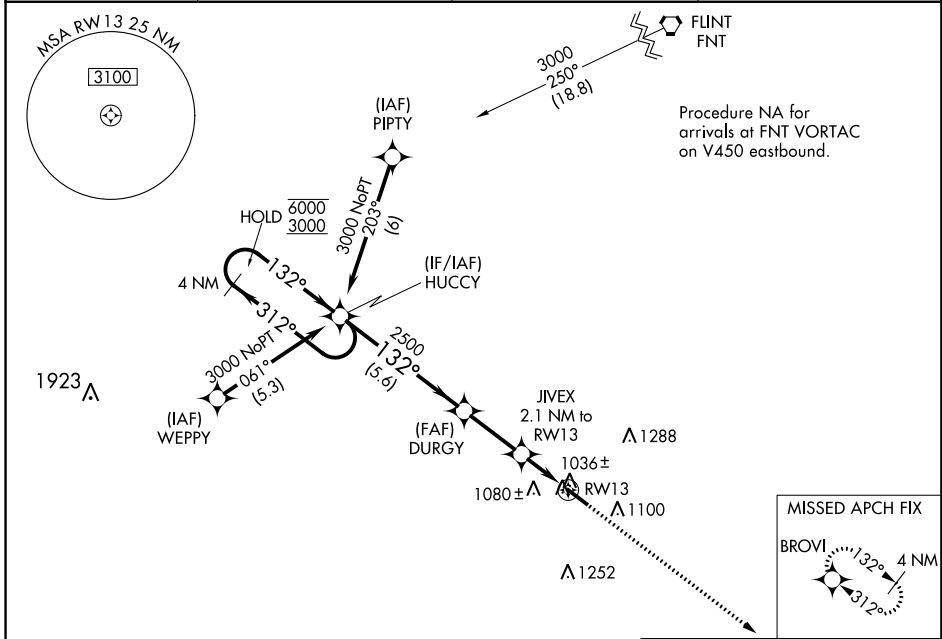
WAAS CH 69601 W13A	APP CRS 132°	Rwy Idg 5002 TDZE 962 Apt Elev 962
--	------------------------	---

RNAV (GPS) RWY 13

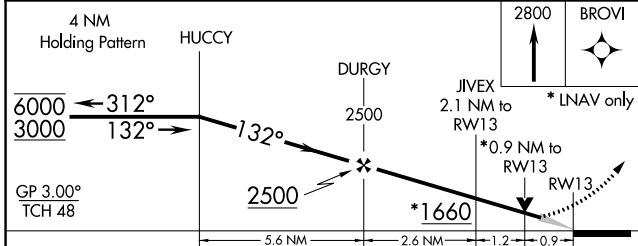
LIVINGSTON COUNTY SPENCER J HARDY (OZW)

RNP APCH.	MALSRL	MISSED APPROACH: Climb to 2800 direct BROVI and hold.
<p>▼ For uncompensated Baro-VNAV systems, LNAV/VNAV NA below -16°C or above 37°C. For inop ALS, increase LNAV/VNAV all Cats visibility to ¾ SM.</p>		

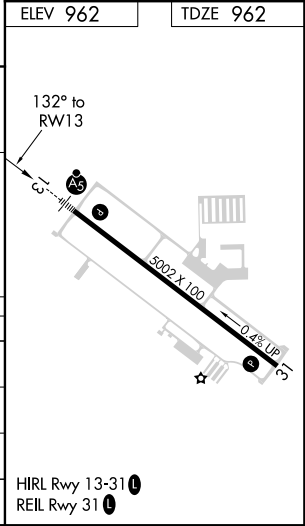
AWOS-3 118.875	DETROIT APP CON 132.35 284.0	CLNC DEL 121.725 (GCO)	UNICOM 123.0 (CTAF) ①
--------------------------	--	----------------------------------	---------------------------------



ELEV 962	TDZE 962
----------	----------



CATEGORY	A	B	C	D
LPV DA		1162-½	200 (200-½)	
LNAV/VNAV DA		1212-½	250 (300-½)	
LNAV MDA		1300-½	338 (400-½)	
CIRCLING	1400-1 438 (500-1)	1420-1 458 (500-1)	1420-1½ 458 (500-1½)	1520-2 558 (600-2)



EC-1, 05 DEC 2019 to 02 JAN 2020

EC-1, 05 DEC 2019 to 02 JAN 2020

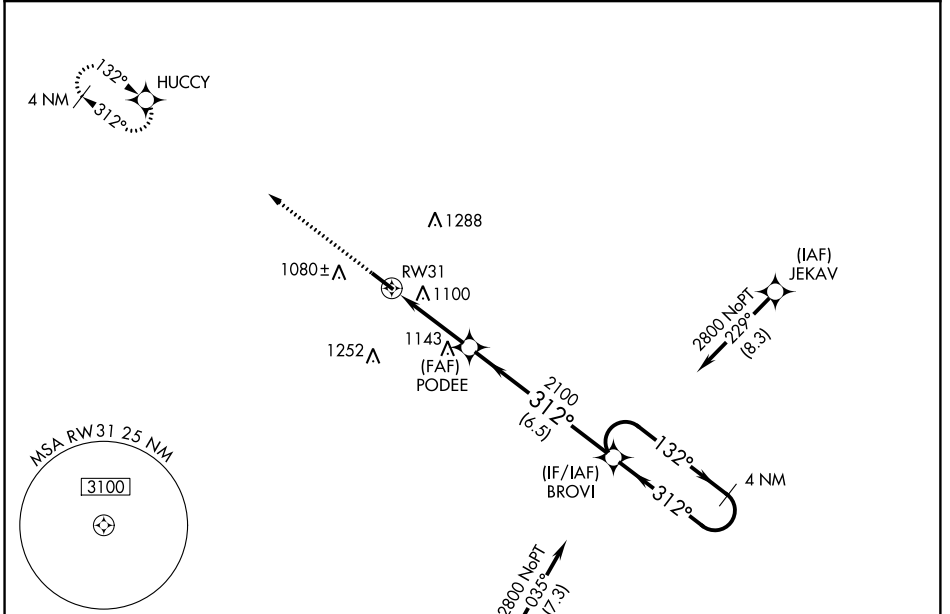
WAAS CH 99722 W31A	APP CRS 312°	Rwy Idg 5002 TDZE 943 Apt Elev 962
--	------------------------	---

RNAV (GPS) RWY 31

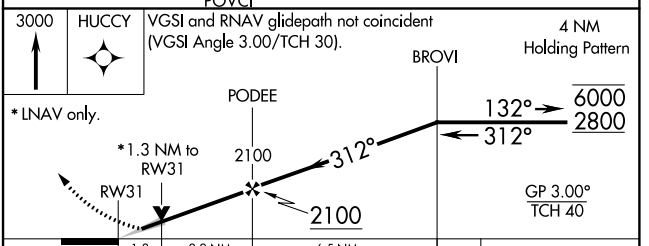
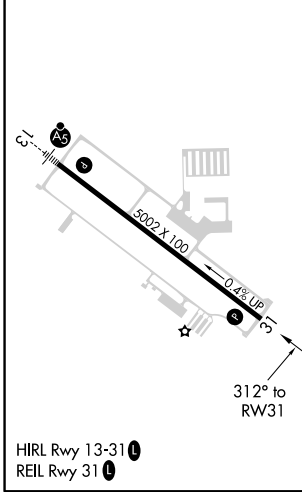
LIVINGSTON COUNTY SPENCER J HARDY (OZW)

RNP APCH.			MISSED APPROACH: Climb to 3000 direct HUCCY and hold.
For uncompensated Baro-VNAV systems, LNAV/VNAV NA below -16°C or above 54°C.			

AWOS-3 118.875	DETROIT APP CON 132.35 284.0	CLNC DEL 121.725 (GCO)	UNICOM 123.0 (CTAF) 0
--------------------------	--	----------------------------------	---------------------------------



ELEV 962	TDZE 943
----------	----------



CATEGORY	A	B	C	D
LPV DA	1143- ³ / ₄		200 (200- ³ / ₄)	
LNAV/VNAV DA	1410-1 ⁵ / ₈		467 (500-1 ⁵ / ₈)	
LNAV MDA	1400-1	457 (500-1)	1400-1 ³ / ₈	457 (500-1 ³ / ₈)
CIRCLING	1400-1 438 (500-1)	1420-1 458 (500-1)	1420-1 ¹ / ₂ 458 (500-1 ¹ / ₂)	1520-2 558 (600-2)

EC-1, 05 DEC 2019 to 02 JAN 2020

EC-1, 05 DEC 2019 to 02 JAN 2020