

FOREY TWO ARRIVAL (RNAV)  
(FOREY.FOREY2) 100CT19

(FOREY.FOREY2) 19283  
FOREY TWO ARRIVAL (RNAV)

AL-5052 (FAA)

PONTIAC, MICHIGAN

- ANN ARBOR MUNI ATIS  
134.55
- BISHOP INTL ATIS  
133.15
- COLEMAN A YOUNG MUNI ATIS  
124.875
- OAKLAND COUNTY INTL ATIS  
125.025
- WILLOW RUN ATIS  
127.425
- SELFRIDGE ANGB ATIS  
125.325 270.1
- DETROIT APP CON  
134.3 284.0

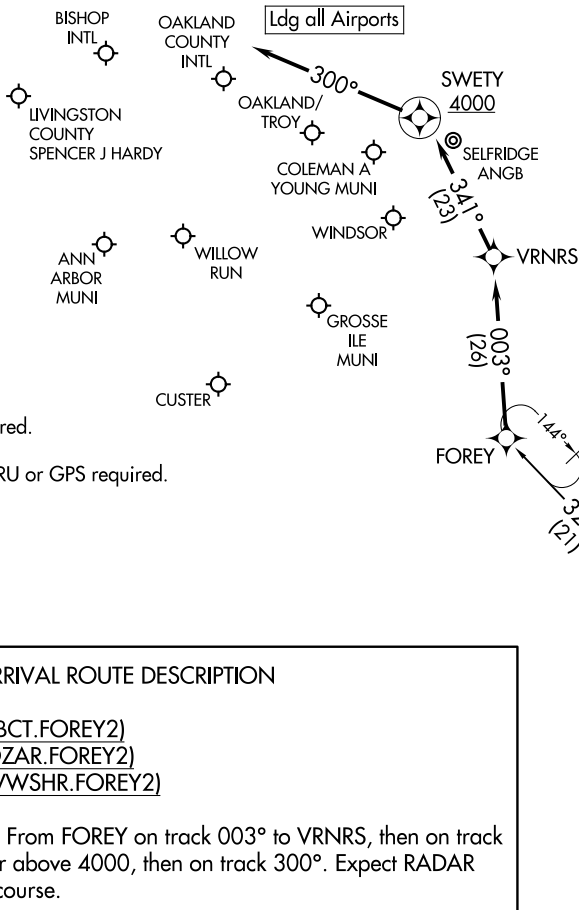
NOTE: RADAR required.  
NOTE: RNAV 1.  
NOTE: DME/DME/IRU or GPS required.

NOTE: Chart not to scale.

### ARRIVAL ROUTE DESCRIPTION

- BOBCT TRANSITION (BOBCT.FOREY2)
- KOZAR TRANSITION (KOZAR.FOREY2)
- WWSHR TRANSITION (WWSHR.FOREY2)

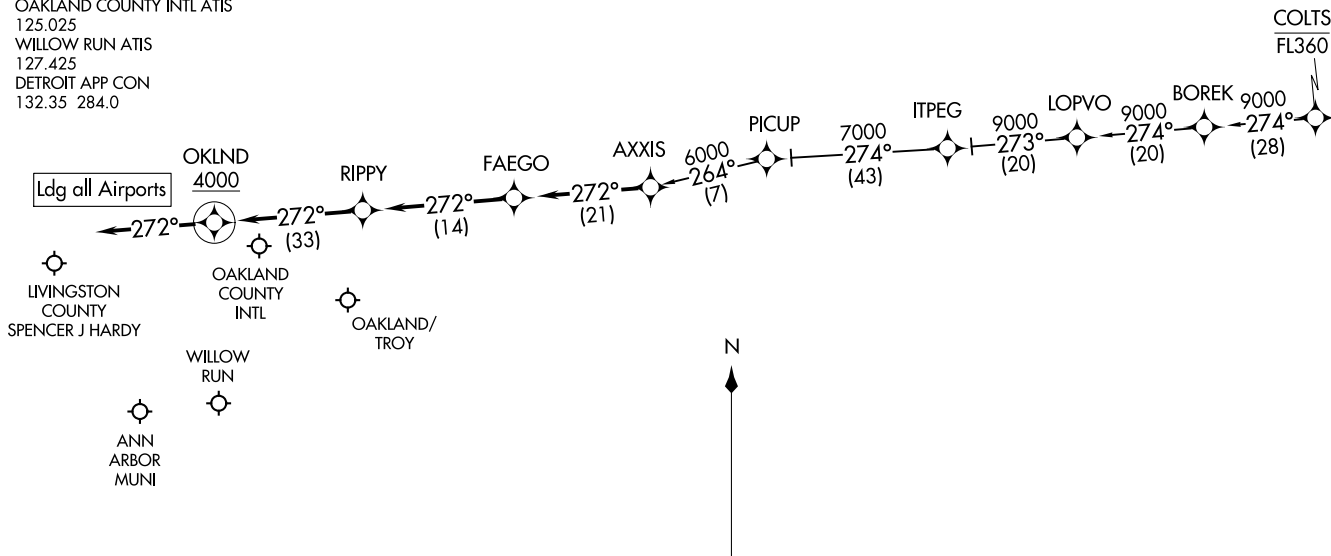
LANDING ALL AIRPORTS: From FOREY on track 003° to VRNRS, then on track 341° to cross SWETY at or above 4000, then on track 300°. Expect RADAR vectors to final approach course.



PONTIAC, MICHIGAN

OKLND ONE ARRIVAL (RNAV)  
(AXXIS, OKLND1) 24MAY18

ANN ARBOR MUNI ATIS  
134.55  
OAKLAND COUNTY INTL ATIS  
125.025  
WILLOW RUN ATIS  
127.425  
DETROIT APP CON  
132.35 284.0



ARRIVAL ROUTE DESCRIPTION

COLTS TRANSITION (COLTS.OKLND1):  
PICUP TRANSITION (PICUP.OKLND1):

**LANDING ALL AIRPORTS:** From AXXIS on track 272° to FAEGO, then on track 272° to RIPPY, then on track 272° to cross OKLND at or above 4000, then on track 272°. Expect RADAR vectors to final approach course.

NOTE: RADAR required.  
NOTE: RNAV 1.  
NOTE: DME/DME/IRU or GPS required.

NOTE: Chart not to scale.

PONTIAC, MICHIGAN

(AXXIS, OKLND1) 19115  
OKLND ONE ARRIVAL (RNAV)

AL-5052 (FAA)

PONTIAC, MICHIGAN

# PETTE TWO ARRIVAL (RNAV)

PONTIAC, MICHIGAN

ANN ARBOR MUNI ATIS  
134.55  
COLEMAN A YOUNG MUNI ATIS  
124.875  
OAKLAND COUNTY INTL ATIS  
125.025  
WILLOW RUN ATIS  
127.425  
SELFRIDGE ANGB ATIS  
125.325 270.1  
DETROIT APP CON  
118.95 284.0

LIVINGSTON COUNTY  
SPENCER J HARDY

OAKLAND COUNTY  
INTL

SELFRIDGE  
ANGB

SYREN  
4000

Ldg all Airports

NAPOLEON

ANN  
ARBOR  
MUNI

WILLOW  
RUN

WINDSOR

GROSSE  
ILE  
MUNI

CLUSTER

HOSSA

5000  
089°  
(33)

10 NM

24°

PETTE

HAZIT

5000  
061°  
(21)

HEVYD

10000  
031°  
(38)

10000  
356°  
(69)

TORRR

QBURT

10000  
045°  
(31)

BGLRI

10000  
077°  
(24)

WWODD

- NOTE: RADAR required.
- NOTE: RNAV 1.
- NOTE: DME/DME/IRU or GPS required.
- NOTE: Caution: Parachute jumping 6 NM northeast of PETTE WAYPOINT, 3 NM radius of NAPOLEON AIRPORT (3NP) at or below 17999 (SR-SS).
- NOTE: QBURT TRANSITION: Do not file, to be assigned by ATC only.

NOTE: Chart not to scale.

## ARRIVAL ROUTE DESCRIPTION

HOSSA TRANSITION (HOSSA.PETTE2):

QBURT TRANSITION (QBURT.PETTE2):

TORRR TRANSITION (TORRR.PETTE2):

WWODD TRANSITION (WWODD.PETTE2):

LANDING CYQG, KONZ, KARB, KYIP, KTF, KDET: From PETTE on track 072° to cross SYREN at or above 4000, then on track 071°. Expect RADAR vectors to final approach course.

LANDING KPTK, KMTC, KOZW, KYLL: From PETTE on track 072° to cross SYREN at or above 4000, then on track 025°. Expect RADAR vectors to final approach course.

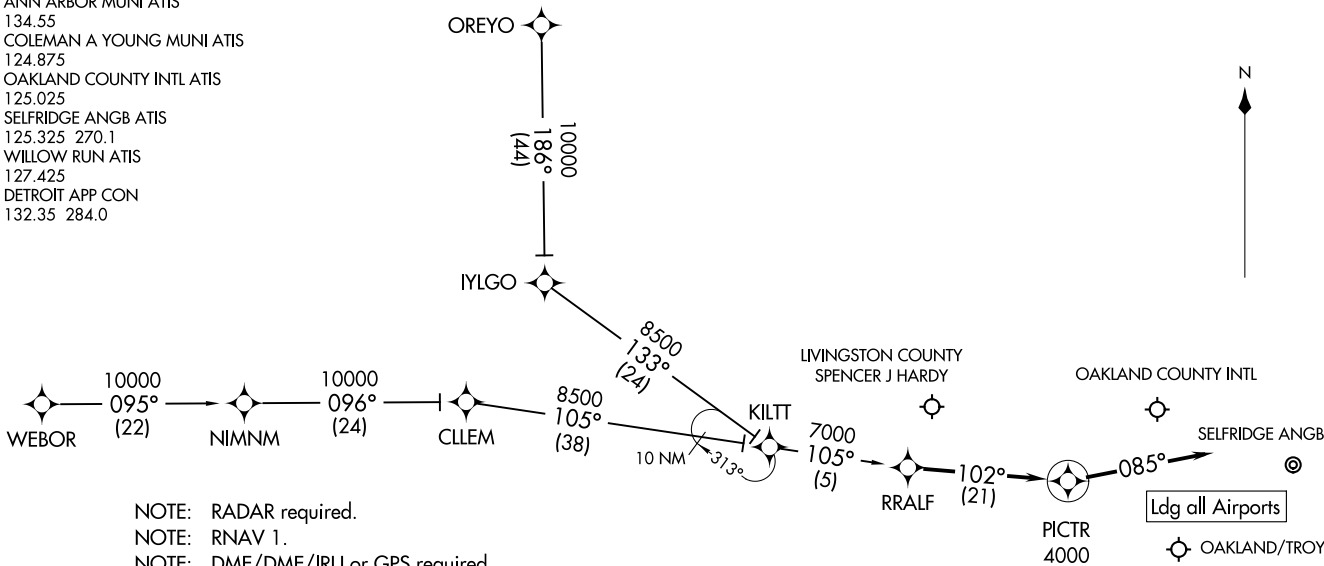
# PETTE TWO ARRIVAL (RNAV)

PONTIAC, MICHIGAN

RRALF TWO ARRIVAL (RNAV)  
(RRALF, RRALF2) 100CT19

PONTIAC, MICHIGAN

ANN ARBOR MUNI ATIS  
134.55  
COLEMAN A YOUNG MUNI ATIS  
124.875  
OAKLAND COUNTY INTL ATIS  
125.025  
SELFRIDGE ANGB ATIS  
125.325 270.1  
WILLOW RUN ATIS  
127.425  
DETROIT APP CON  
132.35 284.0



- NOTE: RADAR required.
- NOTE: RNAV 1.
- NOTE: DME/DME/IRU or GPS required.
- NOTE: CLLEM TRANSITION: Do not file, to be assigned by ATC only.

ARRIVAL ROUTE DESCRIPTION

CLLEM TRANSITION (CLLEM.RRALF2)  
OREYO TRANSITION (OREYO.RRALF2)  
WEBOR TRANSITION (WEBOR.RRALF2)

LANDING ALL AIRPORTS: From RRALF on track 102° to cross PICTR at or above 4000, then on track 085°. Expect RADAR vectors to final approach course.

NOTE: Chart not to scale.

(RRALF, RRALF2) 19283  
RRALF TWO ARRIVAL (RNAV)

AL-5052 (FAA)

PONTIAC, MICHIGAN