

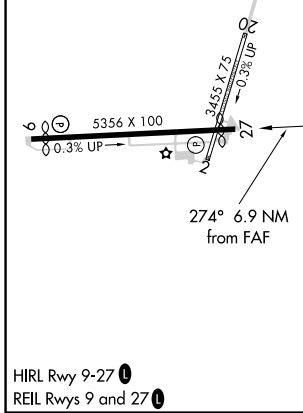
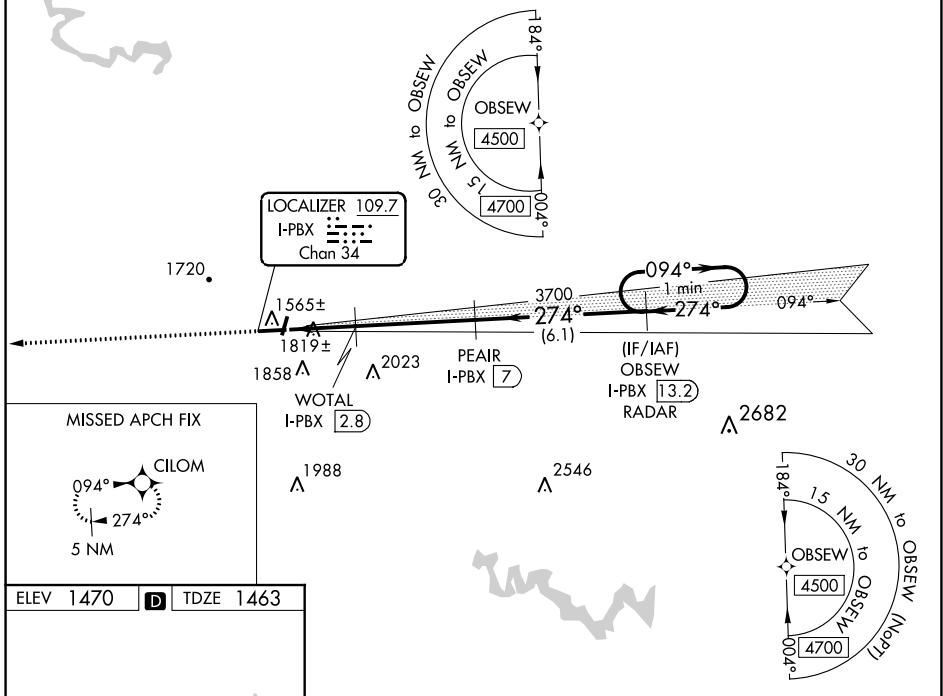
LOC/DME I-PBX 109.7 Chan 34	APP CRS 274°	Rwy Idg 4650 TDZE 1463 Apt Elev 1470
---	------------------------	---

ILS or LOC RWY 27
PIKE COUNTY-HATCHER FIELD (P.B.X)

▼ ▲ NA	DME and RNAV 1-GPS required. Circling NA to Rwy's 2 and 20.	MISSED APPROACH: Climb to 4500 direct CILOM and hold.
-------------------------	--	--

AWOS-3PT 121.225	INDIANAPOLIS CENTER 126.575 257.85	UNICOM 122.8 (CTAF) 0
----------------------------	--	--

RNAV 1-GPS or RADAR REQUIRED



ELEV 1470	D	TDZE 1463		
4500	CILOM			
* LOC only	WOTAL I-PBX 2.8	3700		
I-PBX 0.2	* I-PBX 1.9	I-PBX 7		
		OBSEW I-PBX 13.2		
		RADAR		
		One Minute Holding Pattern		
		4500		
		GS 3.00°		
		TCH 47		
CATEGORY	A	B	C	D
S-ILS 27	1663-1 200 (200-1)			
S-LOC 27	2080-1	617 (700-1)	2080-1¾	617 (700-1¾)
C CIRCLING	2120-1 650 (700-1)	2160-1 690 (700-1)	2160-2 690 (700-2)	2460-3 990 (1000-3)

SE-1, 09 SEP 2021 to 07 OCT 2021

SE-1, 09 SEP 2021 to 07 OCT 2021

WAAS CH 86540 W27A	APP CRS 274°	Rwy Ldg 4650 TDZE 1463 Apt Elev 1470
--	------------------------	---

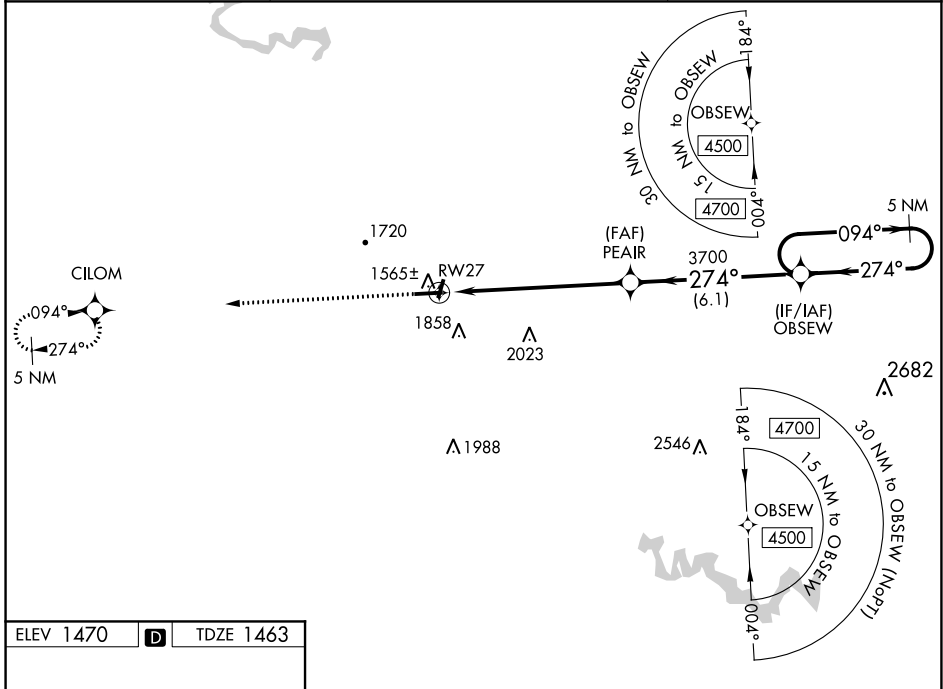
RNAV (GPS) RWY 27

PIKE COUNTY-HATCHER FIELD (P.B.X)

⚠ For uncompensated Baro-VNAV systems, LNAV/VNAV NA below -17°C (0°F) or above 54°C (130°F). DME/DME RNP-0.3 NA. Circling NA to Rwys 2 and 20.

MISSED APPROACH: Climb to 4500 direct CILOM and hold.

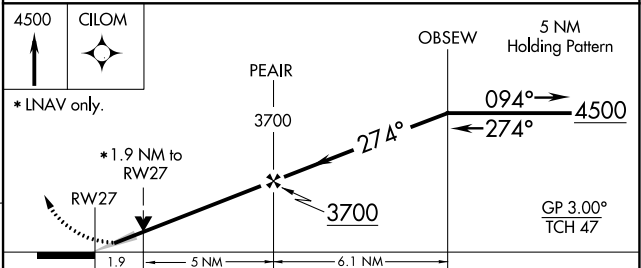
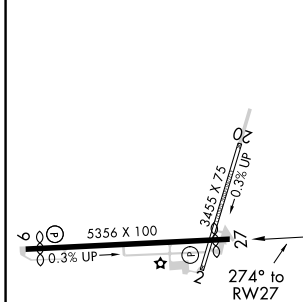
AWOS-3PT 121.225	INDIANAPOLIS CENTER 126.575 257.85	UNICOM 122.8 (CTAF) 0
----------------------------	--	---------------------------------



SE-1, 09 SEP 2021 to 07 OCT 2021

SE-1, 09 SEP 2021 to 07 OCT 2021

ELEV 1470	D	TDZE 1463
-----------	----------	-----------



CATEGORY	A	B	C	D
LPV DA	1663-1 200 (200-1)			
LNAV/VNAV DA	2175-2 1/2 712 (800-2 1/2)			
LNAV MDA	2120-1	657 (700-1)	2120-1 3/4	657 (700-1 3/4)
C CIRCLING	2120-1 650 (700-1)	2160-1 690 (700-1)	2160-2 690 (700-2)	2460-3 990 (1000-3)

WAAS CH 61240 W09A	APP CRS 094°	Rwy Idg TDZE Apt Elev	4650 1459 1470
--	------------------------	-----------------------------	---

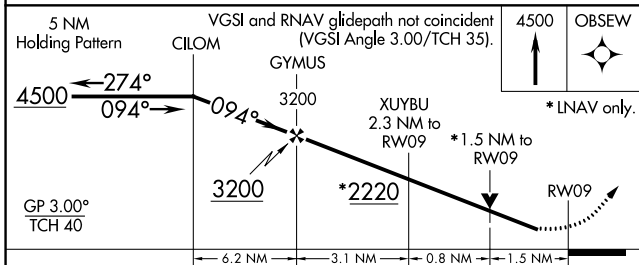
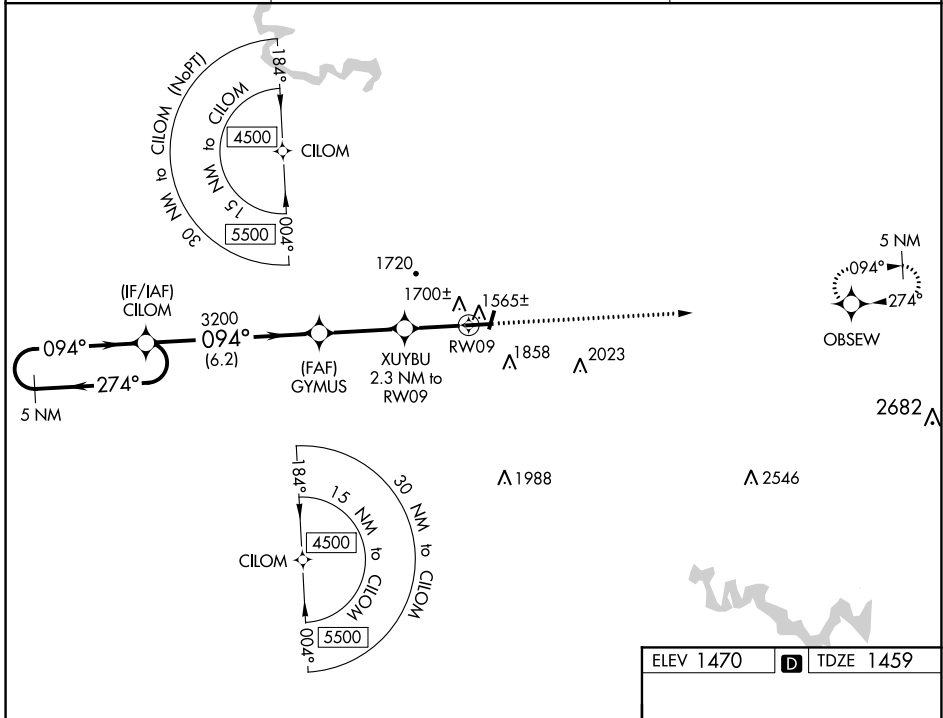
RNAV (GPS) RWY 9

PIKE COUNTY-HATCHER FIELD (P.B.X)

⚠ For uncompensated Baro-VNAV systems, LNAV/VNAV NA below -17°C (0°F) or above 54°C (130°F). DME/DME RNP-0.3 NA. Rwy 9 helicopter visibility reduction below ¾ SM NA. Circling NA to Rwys 2 and 20.

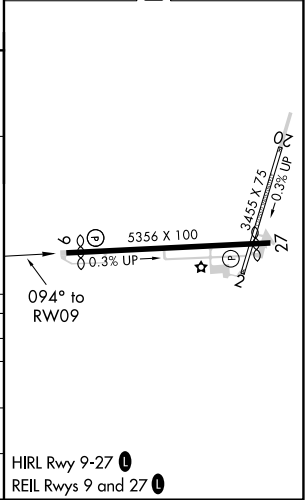
MISSED APPROACH: Climb to 4500 direct OBSEW and hold.

AWOS-3PT 121.225	INDIANAPOLIS CENTER 126.575 257.85	UNICOM 122.8 (CTAF) ①
----------------------------	--	---------------------------------



ELEV 1470 **D** TDZE 1459

CATEGORY	A	B	C	D
LPV DA		1709-1	250 (300-1)	
LNAV/VNAV DA		1891-1½	432 (500-1½)	
LNAV MDA	1960-1	501 (500-1)	1960-1⅓	501 (500-1⅓)
C CIRCLING	2120-1 650 (700-1)	2160-1 690 (700-1)	2160-2 690 (700-2)	2460-3 990 (1000-3)



SE-1, 09 SEP 2021 to 07 OCT 2021

SE-1, 09 SEP 2021 to 07 OCT 2021