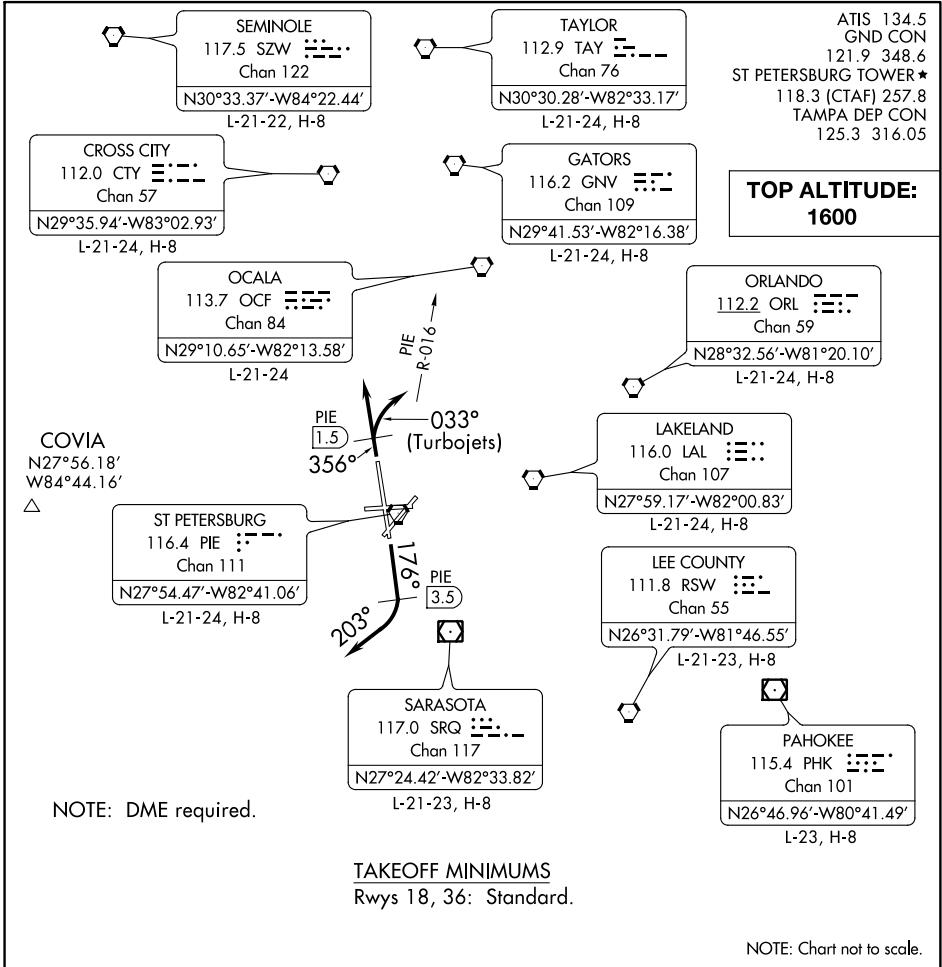


ST PETE NINE DEPARTURE



SE-3, 11 OCT 2018 to 08 NOV 2018

SE-3, 11 OCT 2018 to 08 NOV 2018

DEPARTURE ROUTE DESCRIPTION

TAKEOFF RWY 18: Climb heading 176° until PIE VORTAC 3.5 DME, then turn right heading 203° or as assigned for RADAR vectors to filed/assigned route, thence. . .

TAKEOFF RWY 36: TURBOJETS climb heading 356° until PIE VORTAC 1.5 DME, then turn right heading 033° to intercept and fly outbound on PIE R-016, thence. . .

ALL OTHERS fly heading 356° or as assigned for RADAR vectors to filed/assigned route. Thence. . .

. . . maintain 1600, expect further clearance to filed altitude 10 minutes after departure.