

LOC/DME I-PUJ 109.15	APP CRS 311°	Rwy ldg TDZE Apt Elev	5505 1283 1289
Chan 28 (Y)			

ILS or LOC RWY 31

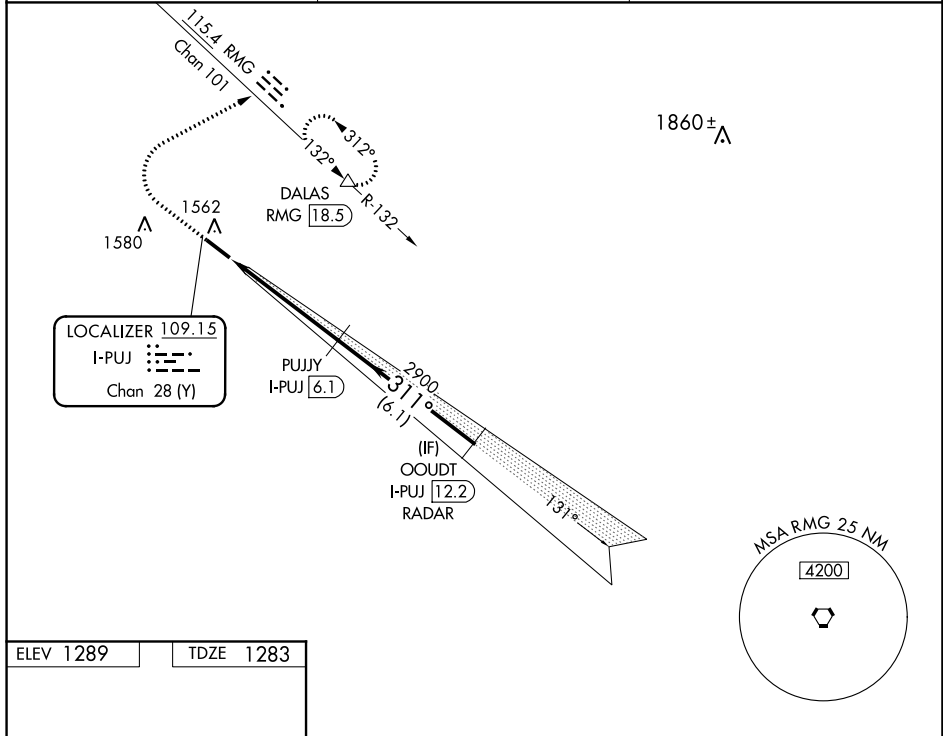
PAULDING NORTHWEST ATLANTA (PUJ)

DME required. RADAR required for procedure entry.

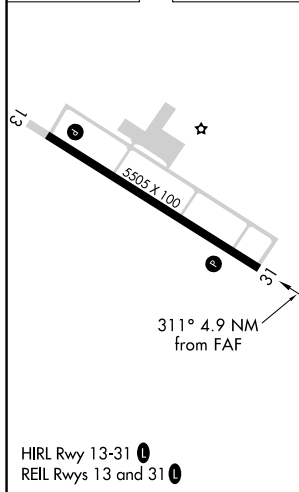
⚠ Autopilot coupled approach NA below 1680.

MISSED APPROACH: Climb to 3000 then climbing right turn to 3600 on heading 066° and RMG VORTAC R-132 to DALAS INT/RMG 18.5 DME and hold.

AWOS-3 126.225	ATLANTA APP CON 121.0 268.7	UNICOM 123.075 (CTAF) 0
--------------------------	---------------------------------------	-----------------------------------



ELEV 1289	TDZE 1283
-----------	-----------



3000	3600	RMG R-132	DALAS	PUJYY I-PUJ (6.1)	OODT I-PUJ (12.2) RADAR
↑	hdg 066°		△		
*LOC only.					
I-PUJ (1.2)	*I-PUJ (2.3)	2900	311°	3000	GS 3.00° TCH 48
← 1.1 NM		← 3.8 NM		← 6.1 NM	
CATEGORY	A	B	C	D	
S-ILS 31	1483- ³ / ₄ 200 (200- ³ / ₄)				
S-LOC 31	1680-1	397 (400-1)	1680-1 ¹ / ₈	397 (400-1 ¹ / ₈)	
C CIRCLING	1880-1	591 (600-1)	1940-1 ³ / ₄ 651 (700-1 ³ / ₄)	1940-2 651 (700-2)	

SE-4, 22 FEB 2024 to 21 MAR 2024

SE-4, 22 FEB 2024 to 21 MAR 2024

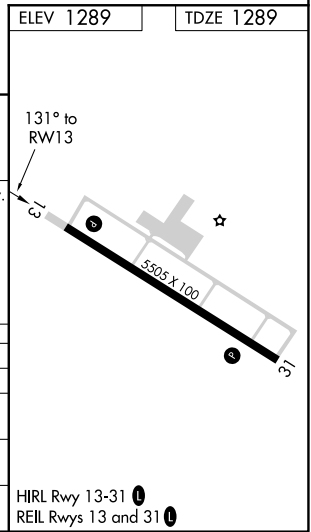
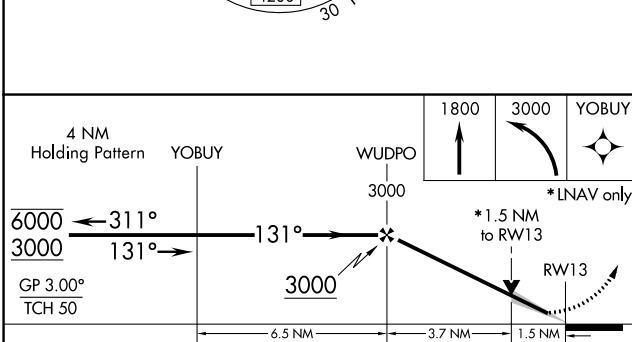
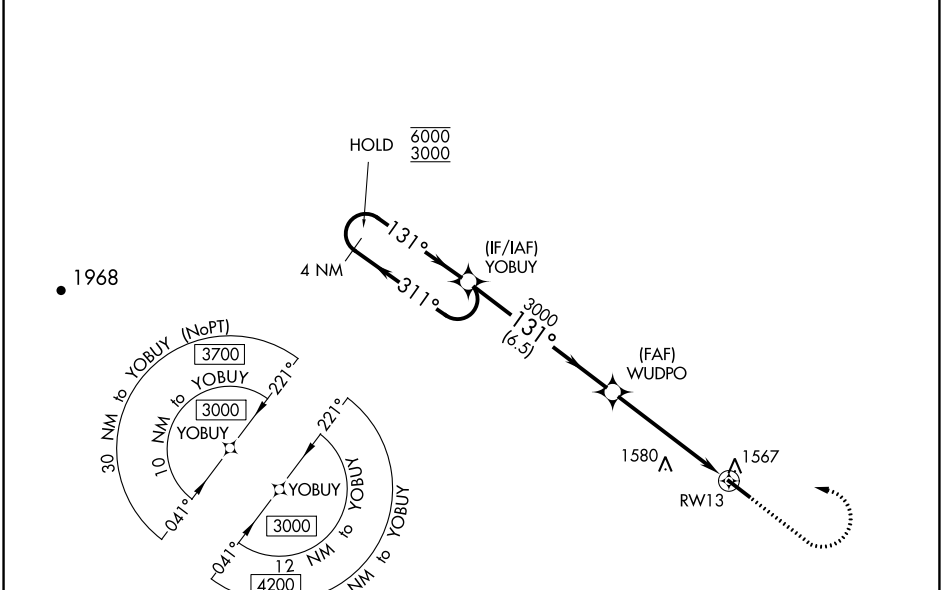
WAAS CH 99720 W13A	APP CRS 131°	Rwy Idg TDZE Apf Elev	5505 1289 1289
--	------------------------	-----------------------------	---

RNAV (GPS) RWY 13

PAULDING NORTHWEST ATLANTA (PUJ)

RNP APCH.	MISSED APPROACH: Climb to 1800 then climbing left turn to 3000 direct YOBUY and hold.
For uncompensated Baro-VNAV systems, LNAV/VNAV NA below -17°C or above 54°C.	

AWOS-3 126.225	ATLANTA APP CON 121.0 268.7	UNICOM 123.075 (CTAF) 0
--------------------------	---------------------------------------	-----------------------------------



CATEGORY	A	B	C	D
LPV DA		1507-3/4	218 (300-3/4)	
LNAV/VNAV DA		1763-1 3/8	474 (500-1 3/8)	
LNAV MDA	1820-1	531 (600-1)	1820-1 1/2	531 (600-1 1/2)
CIRCLING	1880-1	591 (600-1)	1940-1 3/4	1940-2

SE-4, 22 FEB 2024 to 21 MAR 2024

SE-4, 22 FEB 2024 to 21 MAR 2024

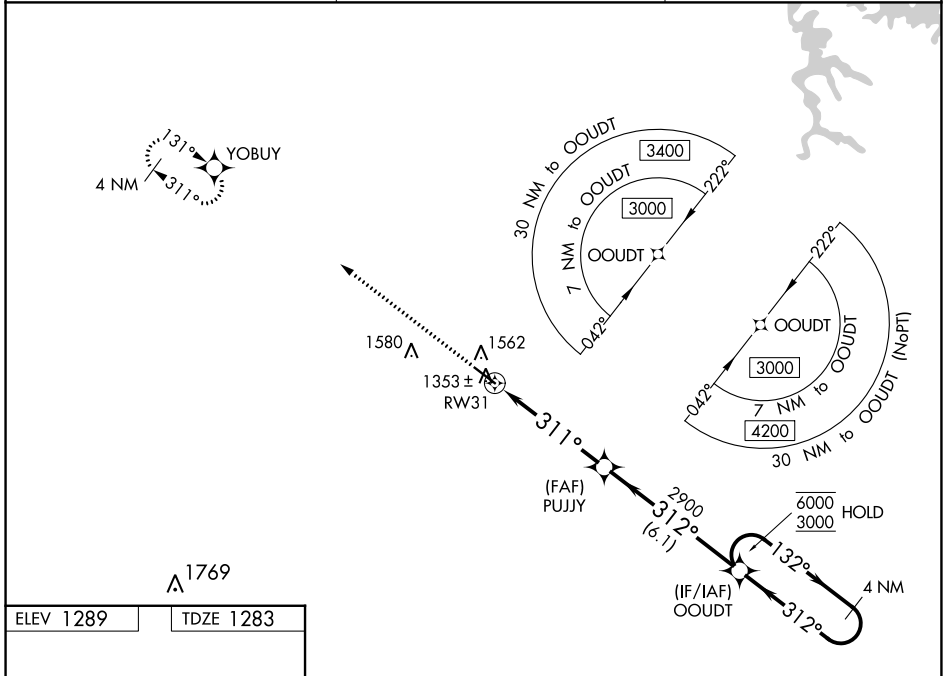
WAAS CH 99511 W31A	APP CRS 311°	Rwy Idg TDZE Apt Elev	5505 1283 1289
--	------------------------	-----------------------------	---

RNAV (GPS) RWY 31

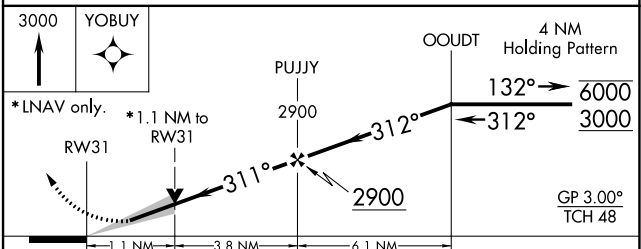
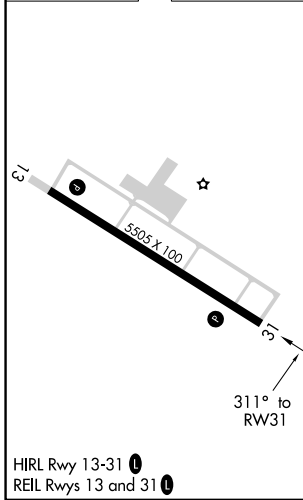
PAULDING NORTHWEST ATLANTA (PUJ)

RNP APCH.	MISSED APPROACH: Climb to 3000 direct YOBUY and hold.
<p>▼ ▲ For uncompensated Baro-VNAV systems, LNAV/VNAV NA below -17°C or above 54°C.</p>	

AWOS-3 126.225	ATLANTA APP CON 121.0 268.7	UNICOM 123.075 (CTAF)
--------------------------	---------------------------------------	---------------------------------



ELEV 1289	TDZE 1283
-----------	-----------



CATEGORY	A	B	C	D
LPV DA	1483- ³ / ₄ 200 (200- ³ / ₄)			
LNAV/VNAV DA	1582- ⁷ / ₈ 299 (300- ⁷ / ₈)			
LNAV MDA	1680-1 397 (400-1)	1680-1 ¹ / ₈ 397 (400-1 ¹ / ₈)		
C CIRCLING	1880-1 591 (600-1)	1940-1 ³ / ₄ 651 (700-1 ³ / ₄)	1940-2 651 (700-2)	

SE-4, 22 FEB 2024 to 21 MAR 2024

SE-4, 22 FEB 2024 to 21 MAR 2024