

APP CRS <b>222°</b>	Rwy Idg <b>5997</b>
	TDZE <b>3373</b>
	Apt Elev <b>3374</b>

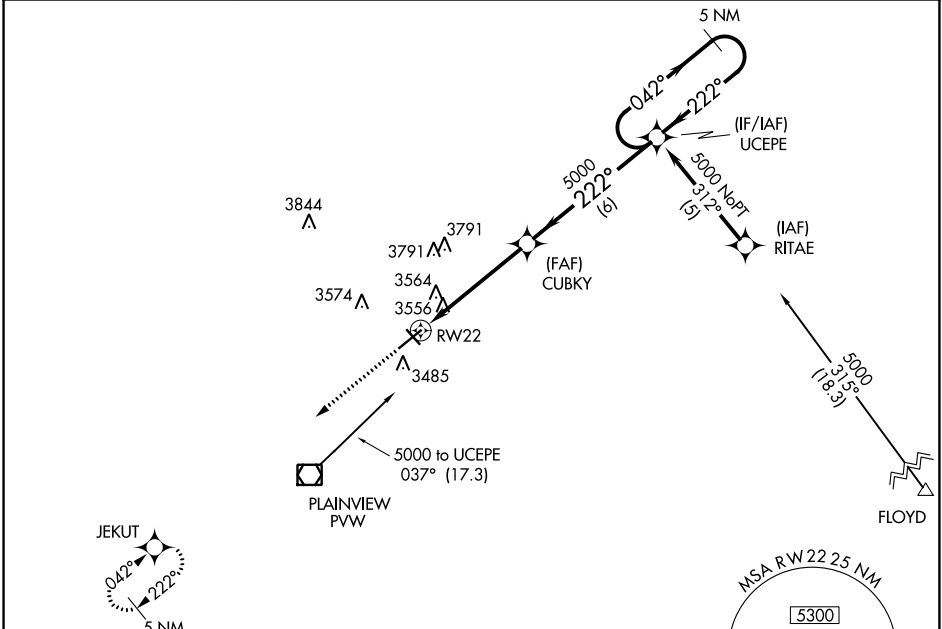
# RNAV (GPS) RWY 22

HALE COUNTY (PVW)

**⚠** DME/DME RNP-0.3 NA. When local altimeter setting not received, use Lubbock altimeter setting and increase all MDAs 100 feet and increase Circling Cat C/D visibility ½ SM. Visibility reduction by helicopters NA.

**MISSED APPROACH:** Climb to 5100 direct JEKUT and hold.

AWOS-3 <b>119.675</b>	LUBBOCK APP CON <b>119.2 351.8</b>	CLNC DEL <b>118.4</b>	UNICOM <b>123.0 (CTAF) 0</b>
--------------------------	---------------------------------------	--------------------------	---------------------------------

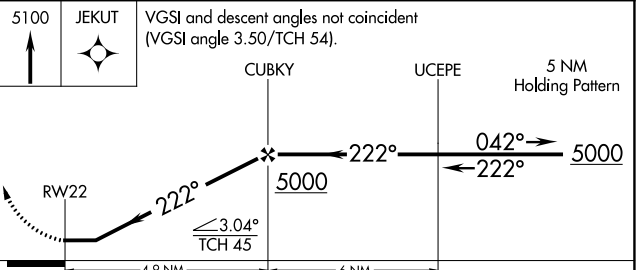
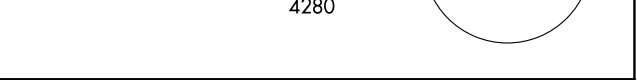
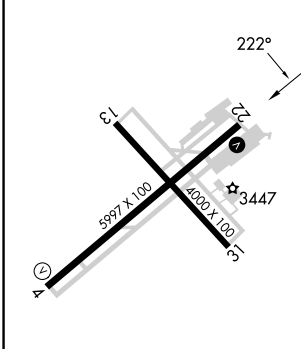


SC-2, 22 FEB 2024 to 21 MAR 2024

SC-2, 22 FEB 2024 to 21 MAR 2024

ELEV 3374	TDZE 3373
-----------	-----------

Procedure NA for arrivals at PVW VOR/DME via V81 southbound.



CATEGORY	A	B	C	D
LNAV MDA	3820-1	447 (500-1)	3820-1¼ 447 (500-1¼)	3820-1½ 447 (500-1½)
CIRCLING	3940-1	566 (600-1)	4160-2¼ 786 (800-2¼)	4160-2½ 786 (800-2½)

REIL Rwy 4 and 22  
MIRL Rwy 4-22 and 13-31

WAAS CH <b>53302</b> <b>W04A</b>	APP CRS <b>042°</b>	Rwy Idg <b>5997</b> TDZE <b>3374</b> Apt Elev <b>3374</b>
--	------------------------	---

# RNAV (GPS) RWY 4

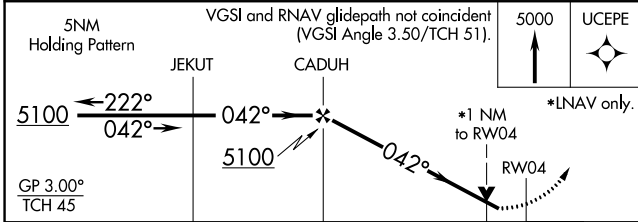
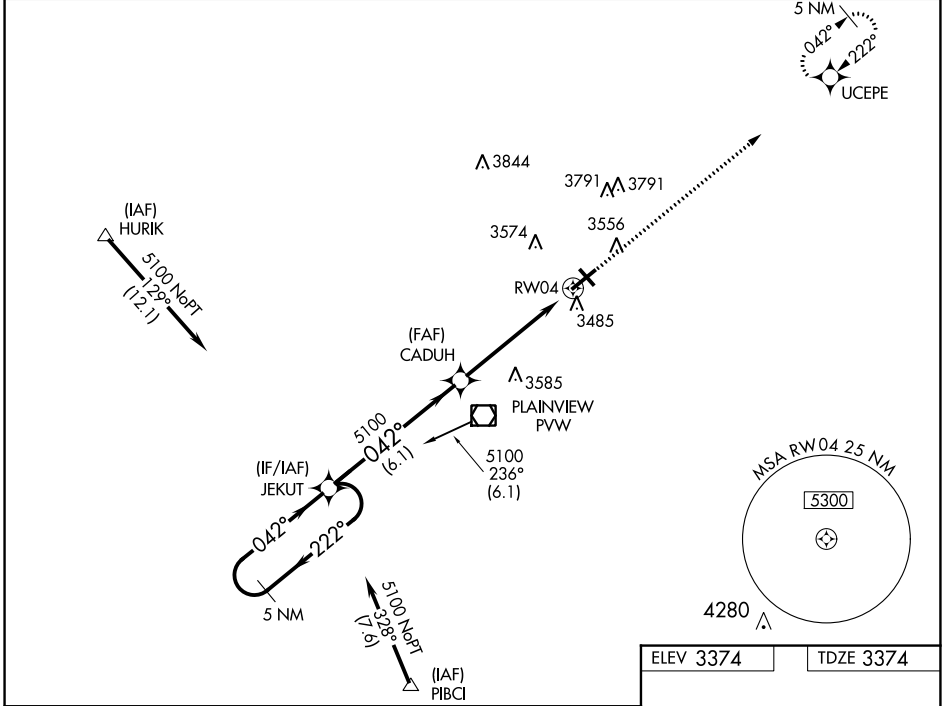
HALE COUNTY (PVW)

RNP APCH.

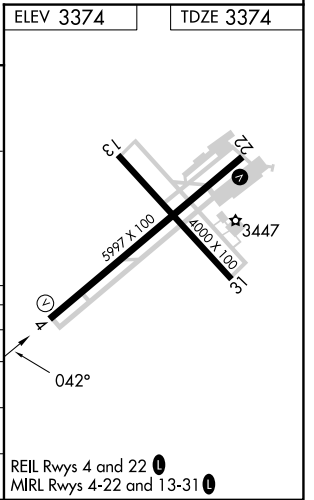
▼ For uncompensated Baro-VNAV systems, LNAV/VNAV NA below -21°C or above 42°C. VDP and Baro-VNAV NA when using Lubbock altimeter setting. Rwy 4 helicopter visibility reduction below ¼ SM NA. When local altimeter setting not received, use Lubbock altimeter setting; increase all DA 83 feet and increase all LPV and LNAV/VNAV visibility ½ SM, increase all MDA 100 feet and LNAV Cat C/D visibility ¼ SM and Circling Cat C/D visibility ½ SM.

MISSED APPROACH: Climb to 5000, direct UCEPE and hold.

AWOS-3 <b>119.675</b>	LUBBOCK APP CON <b>119.2 351.8</b>	CLNC DEL <b>118.4</b>	UNICOM <b>123.0 (CTAF) 0</b>
--------------------------	---------------------------------------	--------------------------	---------------------------------



CATEGORY	A	B	C	D
LPV DA	3624-1		250 (300-1)	
LNAV/VNAV DA	3730-1¼		356 (400-1¼)	
LNAV MDA	3800-1	426 (500-1)	3800-1¼	426 (500-1¼)
CIRCLING	3940-1¼	566 (600-1¼)	4160-2¼ 786 (800-2¼)	4160-2½ 786 (800-2½)



VOR/DME PVW <b>112.9</b> Chan <b>76</b>	APP CRS <b>024°</b>	Rwy Idg <b>5997</b> TDZE <b>3374</b> Apt Elev <b>3374</b>
---	------------------------	---

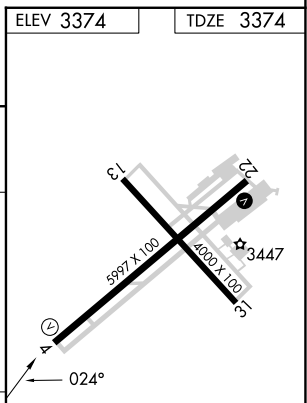
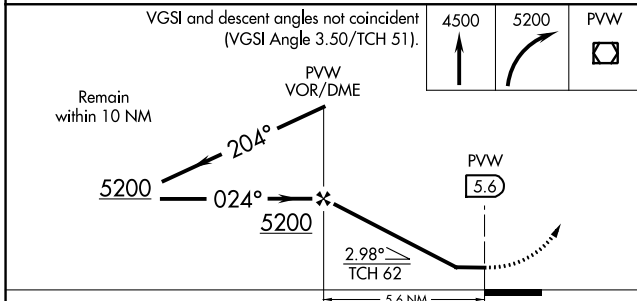
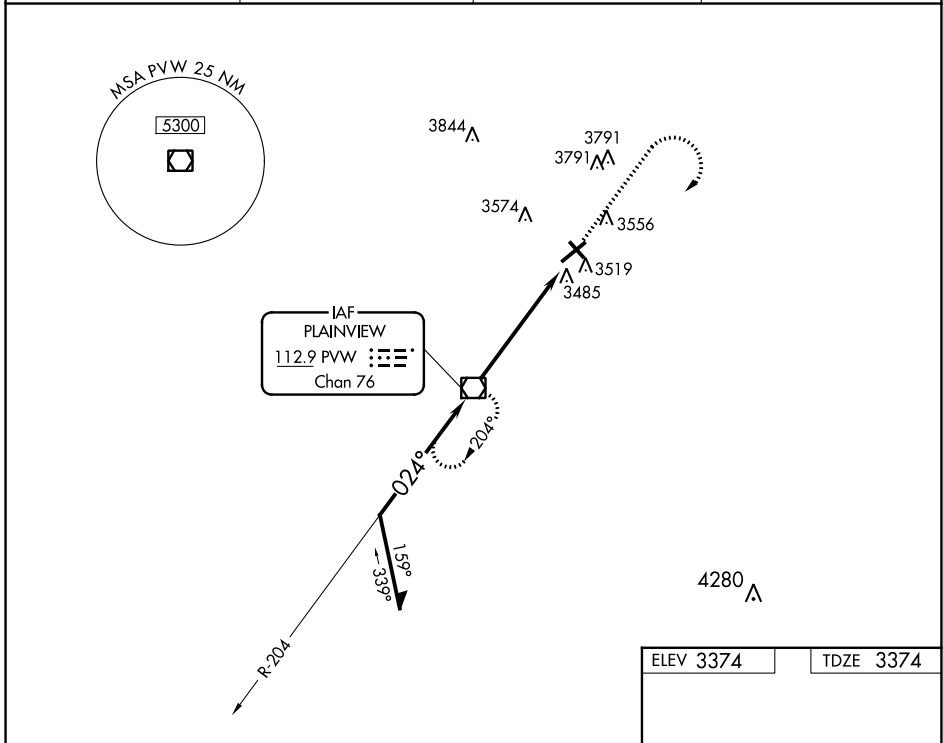
# VOR RWY 4

HALE COUNTY (PVW)

**⚠ NA** When local altimeter setting not received, use Lubbock altimeter setting and increase all MDA 100 feet, increase S-4 visibility Cat C/D to 1½ SM, Circling Cat C visibility to 2¾ SM, and Circling Cat D visibility to 3 SM. Helicopter visibility reduction below ¾ mile NA.

MISSED APPROACH: Climb to 4500, then climbing right turn to 5200 direct PVW VOR/DME and hold.

AWOS-3 <b>119.675</b>	LUBBOCK APP CON <b>119.2 351.8</b>	CLNC DEL <b>118.4</b>	UNICOM <b>123.0 (CTAF) 0</b>
--------------------------	---------------------------------------	--------------------------	---------------------------------



CATEGORY	A	B	C	D
S-4	3840-1	466 (500-1)	3840-1¾	466 (500-1¾)
CIRCLING	3940-1	566 (600-1)	4160-2¼ 786 (800-2¼)	4160-2½ 786 (800-2½)

REIL Rwy 4 and 22 0  
MIRL Rwy 4-22 and 13-31 0  
FAF to MAP 5.6 NM

Knots	60	90	120	150	180
Min:Sec	5:36	3:44	2:48	2:14	1:52

SC-2, 22 FEB 2024 to 21 MAR 2024

SC-2, 22 FEB 2024 to 21 MAR 2024