

WAAS CH 63230 W17A	APP CRS 173°	Rwy Idg TDZE Apt Elev	5501 592 592
--	------------------------	-----------------------------	---

RNAV (GPS) RWY 17

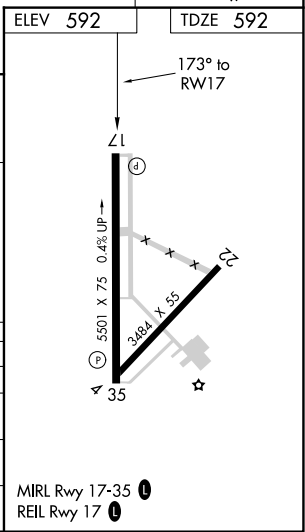
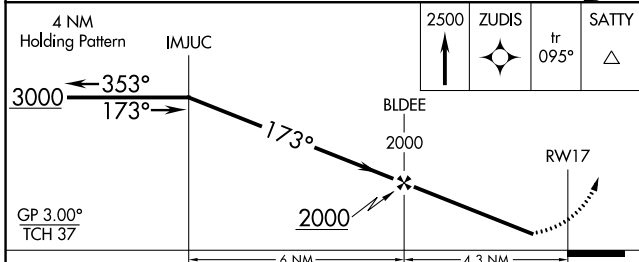
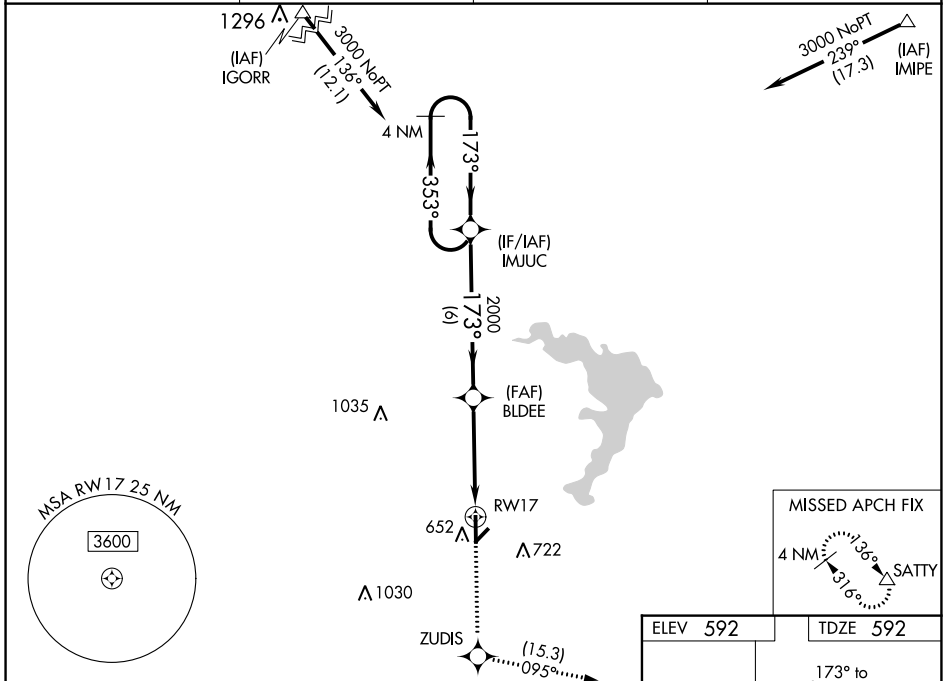
MC GREGOR EXEC (PWG)

⚠ Circling to Rwy 4 NA at night. Baro-VNAV NA when using Waco Rgnl altimeter setting. For uncompensated Baro-VNAV systems, LNAV/VNAV NA below -20°C (-4°F) or above 54°C (130°F). DME/DME RNP-0.3 NA. Helicopter visibility reduction below 3/4 SM NA. When local altimeter setting not received, use Waco Rgnl altimeter setting and increase all DA 31 feet and MDA 40 feet, and increase LPV all Cats visibility and LNAV/VNAV all Cats visibility 1/8 mile.

ASR

MISSED APPROACH: Climb to 2500 direct ZUDIS and on track 095° to SATTY and hold.

AWOS-3PT 135.525	WACO APP CON ★ 127.65 352.0	GCO 121.725	UNICOM 122.8 (CTAF) 0
----------------------------	---------------------------------------	-----------------------	--



CATEGORY	A	B	C	D
LPV DA	842-3/4	250 (300-3/4)		NA
LNAV/VNAV DA	842-3/4	250 (300-3/4)		NA
LNAV MDA	1040-1	448 (500-1)	1040-1 3/8 448 (500-1 3/8)	NA
CIRCLING	1040-1 448 (500-1)	1060-1 468 (500-1)	1060-1 1/2 468 (500-1 1/2)	NA

SC-3, 11 AUG 2022 to 08 SEP 2022

SC-3, 11 AUG 2022 to 08 SEP 2022

WAAS CH 87130 W35A	APP CRS 353°	Rwy Idg TDZE Apt Elev	5501 580 592
--	------------------------	-----------------------------	---

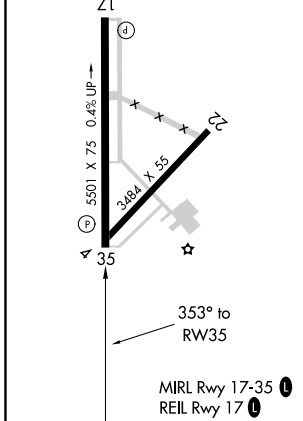
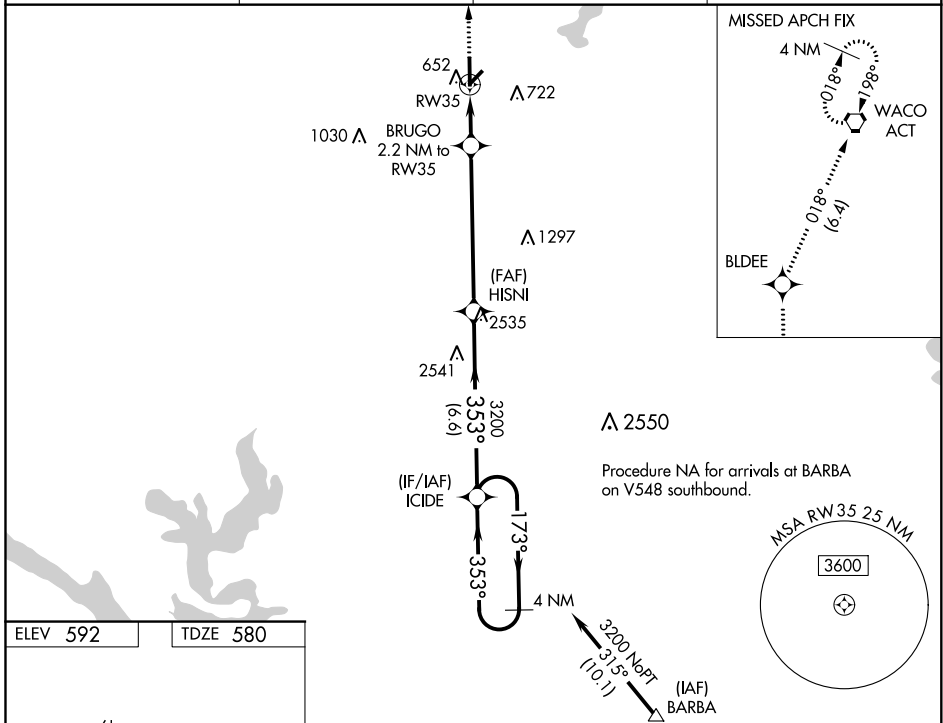
RNAV (GPS) RWY 35

MC GREGOR EXEC (PWG)

⚠ ASR Circling to Rwy 4 NA at night. Baro-VNAV NA when using Waco Rgnl altimeter setting. For uncompensated Baro-VNAV systems, LNAV/VNAV NA below -16°C (4°F) or above 54°C (130°F). When local altimeter setting not received, use Waco Rgnl altimeter setting increase all DA 31 feet and MDA 40 feet. DME/DME RNP-0.3 NA. Helicopter visibility reduction below 3/4 SM NA.

MISSED APPROACH:
Climb to 2500 direct BLDEE and on track 018° to ACT VORTAC and hold.

AWOS-3PT 135,525	WACO APP CON * 127.65 352.0	GCO 121.725	UNICOM 122.8 (CTAF) 📻
----------------------------	---------------------------------------	-----------------------	--



2500	BLDEE	ACT	HISNI	ICIDE	4 NM Holding Pattern
↑	📍	📍	3200		
	tr 018°				
* LNAV only	BRUGO 2.2 NM to RW35		3200	353°	173°
			3200	353°	3200
					GP 3.00°
					TCH 46

CATEGORY	A	B	C	D
LPV DA	830-3/4	250 (300-3/4)		NA
LNAV/VNAV DA	830-3/4	250 (300-3/4)		NA
LNAV MDA	960-1	380 (400-1)	960-1 1/8 380 (400-1 1/8)	NA
CIRCLING	1020-1 428 (500-1)	1060-1 468 (500-1)	1060-1 1/2 468 (500-1 1/2)	NA

