

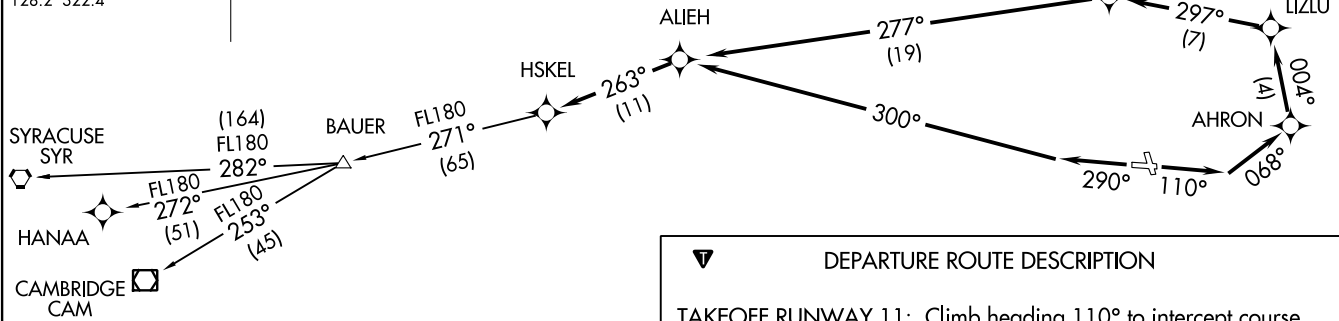
HSKEL THREE DEPARTURE (RNAV)
(HSKEL3.HSKE1) 13SEP18

ATIS 119.05
CLNC DEL 121.9
GND CON 121.9
PORTLAND TOWER *
120.9 (CTAF) 257.8
PORTLAND DEP CON *
119.75 269.35
BOSTON CENTER
128.2 322.4



NOTE: For Turbojets only.
NOTE: DME/DME/IRU or GPS required.
NOTE: RNAV 1.
NOTE: Radar required for non-GPS equipped aircraft.
NOTE: For non-GPS equipped aircraft: CON DME must be operational for Takeoff Rwy 11.

TOP ALTITUDE:
3000



DEPARTURE ROUTE DESCRIPTION

TAKEOFF RUNWAY 11: Climb heading 110° to intercept course 068° to AHRON, then on depicted route to HSKEL, thence....

TAKEOFF RUNWAY 29: Climb heading 290° to intercept course 300° to ALIEH, then on depicted route to HSKEL, thence....

....Maintain 3000 or as assigned by ATC (5000 when tower closed, contact Boston Center). Expect clearance to filed altitude five (5) minutes after departure.

BAUER TRANSITION (HSKEL3.BAUER):
CAMBRIDGE TRANSITION (HSKEL3.CAM):
HANAA TRANSITION (HSKEL3.HANAA):
SYRACUSE TRANSITION (HSKEL3.SYR):

LOST COMMUNICATIONS: If radio contact not established within 2 minutes after departure, proceed on course via HSKEL RNAV route to requested altitude or 10000, whichever is lower.

TAKEOFF MINIMUMS:
Rwy 11: Standard with minimum climb of 350' per NM to 1300.
Rwy 29: Standard.

NOTE: Chart not to scale.

PORTLAND, MAINE
PORTLAND INTL JETPORT (P W J)
PORTLAND, MAINE

(HSKEL3.HSKE1) 18256
HSKEL THREE DEPARTURE (RNAV)
AL-329 (FAA)

PORTLAND INTL JETPORT (P W J)
PORTLAND, MAINE

(NUBLE4.NUBLE) 18256

AL-329 (FAA)

PORTLAND INTL JETPORT (P'W'M)
PORTLAND, MAINE

NUBLE FOUR DEPARTURE (RNAV)

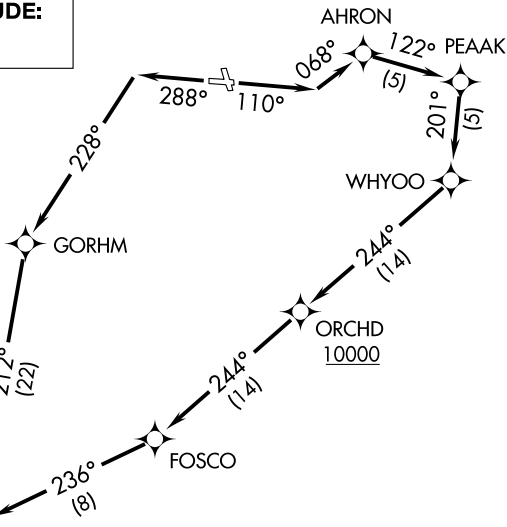
ATIS 119.05
CLNC DEL 121.9
GND CON 121.9
PORTLAND TOWER *
120.9 (CTAF) 257.8
PORTLAND DEP CON *
119.75 269.35
BOSTON CENTER
128.2 322.4

**TOP ALTITUDE:
3000**

TAKEOFF MINIMUMS:

Rwy 11: Standard with a minimum
climb of 500' per NM to 576.
Rwy 29: Standard.

NOTE: For Turbojets only.
NOTE: DME/DME/IRU or GPS required.
NOTE: RNAV 1.
NOTE: Radar required for non-GPS
equipped aircraft.



DEPARTURE ROUTE DESCRIPTION

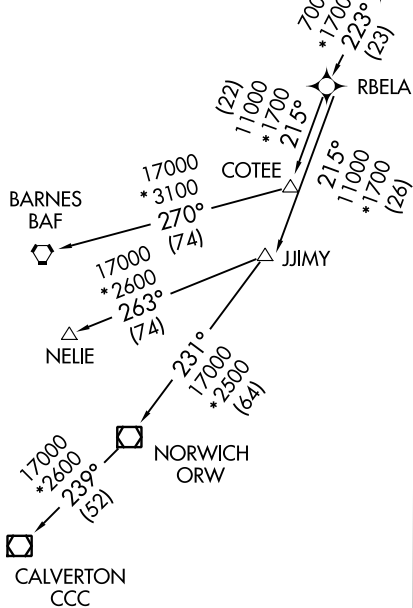
TAKEOFF RUNWAY 11: Climb heading 110° to intercept course 068° to AHRON, then on track 122° to PEAACK, then on track 201° to WHYOO, then on track 244° to cross ORCHD at or above 10000, then on depicted route to NUBLE, thence....

TAKEOFF RUNWAY 29: Climb heading 288° to intercept 228° to GORHM, then on depicted route to NUBLE, thence....

....Maintain 3000 or as assigned by ATC (5000 when tower closed, contact Boston Center). Expect clearance to filed altitude five (5) minutes after departure.

BARNES TRANSITION (NUBLE4.BAF):
CALVERTON TRANSITION (NUBLE4.CCC):
JJIMY TRANSITION (NUBLE4.JJIMY):
NELIE TRANSITION (NUBLE4.NELIE):

LOST COMMUNICATIONS: If radio contact not established within 2 minutes after departure, proceed on course via NUBLE RNAV route to requested altitude or 10000 whichever is lower.



NOTE: Chart not to scale.

NUBLE FOUR DEPARTURE (RNAV)

(NUBLE4.NUBLE) 13SEP18

PORTLAND, MAINE
PORTLAND INTL JETPORT (P'W'M)

NE-1, 28 JAN 2021 to 25 FEB 2021

NE-1, 28 JAN 2021 to 25 FEB 2021

PORTLAND SIX DEPARTURE

ATIS 119.05
 CLNC DEL
 121.9
 GND CON
 121.9
 PORTLAND TOWER ★
 120.9 (CTAF) 257.8
 PORTLAND DEP CON ★
 119.75 269.35
 BOSTON CENTER
 128.2 322.4

**TOP ALTITUDE:
3000**

BANGOR
 114.8 BGR
 Chan 95
 N44°50.51'-W68°52.44'
 L-32, H-11

MONTPELIER
 110.8 MPV
 Chan 45
 N44°05.13'-W72°26.96'
 L-32

AUGUSTA
 114.95 AUG
 Chan 96 (Y)
 N44°19.20'-W69°47.79'
 L-32

BURLINGTON
 117.5 BTV
 Chan 122
 N44°23.83'-W73°10.96'
 L-32, H-11-12

SYRACUSE
 117.0 SYR
 Chan 117
 N43°09.63'
 W76°12.27'
 L-32, H-11-12

KENNEBUNK
 117.1 ENE
 Chan 118
 N43°25.54'-W70°36.81'
 L-32, H-11-12

CONCORD
 112.9 CON
 Chan 76
 N43°13.19'-W71°34.53'
 L-32

CAMBRIDGE
 115.0 CAM
 Chan 97
 N42°59.66'
 W73°20.64'
 L-32-34, H-11-12

TAKEOFF MINIMUMS:

- Rwy 18, 29: Standard.
- Rwy 11: 300-1¼ or standard with minimum climb of 272' per NM to 400.
- Rwy 36: 400-2¾ or standard with minimum climb of 235' per NM to 600.

BOSTON
 112.7 BOS
 Chan 74
 N42°21.45'-W70°59.37'
 L-33-34, H-10-11-12

MARCONI
 114.7 LFV
 Chan 94
 N42°01.03'-W70°02.23'
 L-33, H-10-11-12

NOTE: Chart not to scale.

DEPARTURE ROUTE DESCRIPTION

TAKEOFF ALL RWYS: Fly runway heading or as assigned by ATC; for radar vectors to assigned route/navaid/fix. Maintain 3000 or as assigned by ATC. Expect clearance to filed altitude five (5) minutes after departure. When tower closed maintain 5000, contact Boston Center.

NE-1, 28 JAN 2021 to 25 FEB 2021

NE-1, 28 JAN 2021 to 25 FEB 2021