

LOC/DME I-RAP 109.3 Chan 30	APP CRS 324°	Rwy Idg 8701 TDZE 3160 Apt Elev 3204
---	------------------------	---

ILS or LOC RWY 32

RAPID CITY RGNL (RAP)

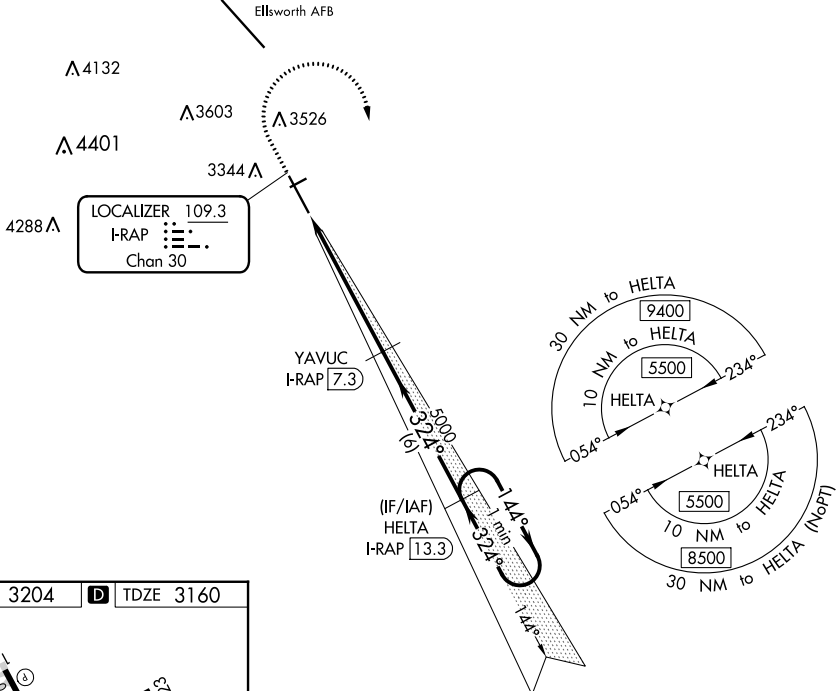
⚠ DME and RNAV 1-GPS required. ILS glideslope unusable for coupled approaches below 3360. For inop ALS, increase S-ILS Cat E visibility to RVR 4000 and S-LOC Cat E visibility to 1½ SM. # RVR 1800 authorized with use of FD or AP or HUD to DA.



MISSED APPROACH: Climb to 3700 then climbing right turn to 5500 direct HELTA and hold.

ASOS 118.525	ELLSWORTH APP CON ★ 119.5 259.1	RAPID CITY TOWER ★ 125.85 (CTAF) 257.8	GND CON 121.9	UNICOM 122.95
------------------------	---	--	-------------------------	-------------------------

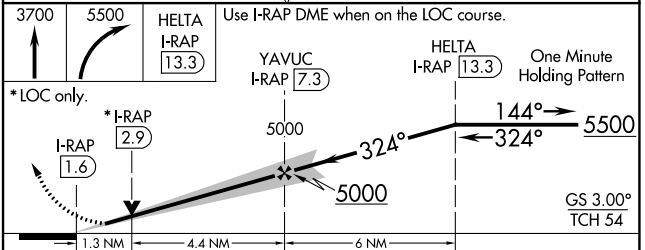
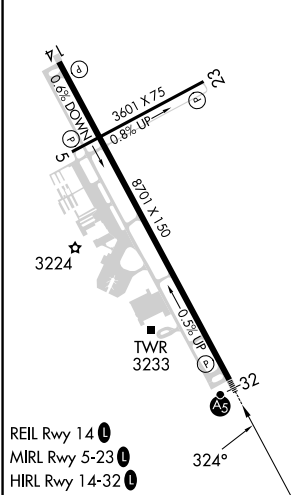
RNAV 1-GPS or RADAR REQUIRED



NC-1, 22 FEB 2024 to 21 MAR 2024

NC-1, 22 FEB 2024 to 21 MAR 2024

ELEV 3204	D	TDZE 3160
------------------	----------	------------------



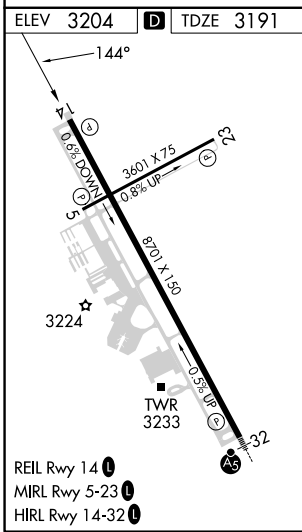
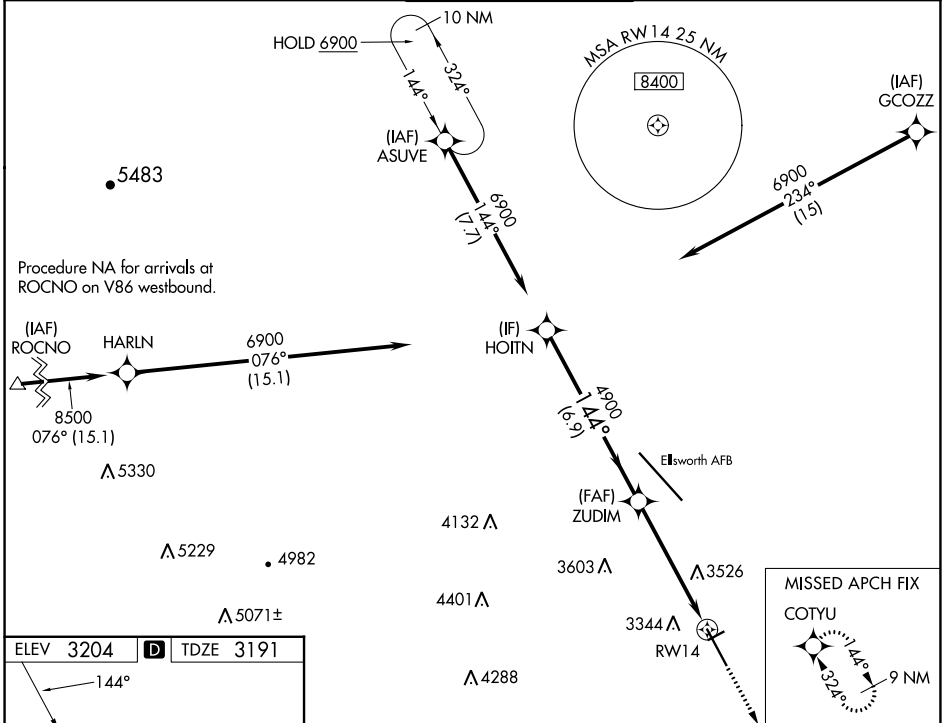
CATEGORY	A	B	C	D	E
S-ILS 32#	3360/24 200 (200-½)				
S-LOC 32	3620/24	460 (500-½)	3620/45	460 (500-¾)	
C CIRCLING	3660-1 456 (500-1)	3840-1 636 (700-1)	3860-1¾ 656 (700-1¾)	3940-2¼ 736 (800-2¼)	3960-2¾ 756 (800-2¾)

WAAS CH 60919 W14A	APP CRS 144°	Rwy Idg TDZE Apt Elev	8701 3191 3204
--	------------------------	-----------------------------	---

RNAV (GPS) RWY 14

RAPID CITY RGNL (R.A.P)

RNP APCH - GPS.		MISSED APPROACH: Climb to 5500 direct COTUY and hold.		
<p>▼ Rwy 14 helicopter visibility reduction below 3/4 SM NA. For uncompensated Baro-VNAV systems, LNAV/VNAV NA below -24°C or above 52°C.</p>				
ASOS 118.525	ELLSWORTH APP CON * 119.5 259.1	RAPID CITY TOWER * 125.85 (CTAF) 257.8	GND CON 121.9	UNICOM 122.95



ELEV 3204	D	TDZE 3191					
HOITN		ZUDIM		5500		COTUY	
6900		4900		1.7 NM to RWY 14		RWY 14	
GP 3.00°		4900					
TCH 50		6.9 NM		3.5 NM		1.7 NM	
CATEGORY	A	B	C	D	E		
LPV DA	3441-3/4		250 (300-3/4)				
LNAV/VNAV DA	3858-1 7/8		667 (700-1 7/8)				
LNAV MDA	3780-1 589 (600-1)		3780-1 3/4 589 (600-1 3/4)				
C CIRCLING	3780-1 576 (600-1)	3840-1 636 (700-1)	3860-1 3/4 656 (700-1 3/4)	3940-2 1/4 736 (800-2 1/4)	3940-2 1/2 736 (800-2 1/2)		

NC-1, 22 FEB 2024 to 21 MAR 2024

NC-1, 22 FEB 2024 to 21 MAR 2024

WAAS CH 40433 W23A	APP CRS 234°	Rwy Idg TDZE Apt Elev	3601 3204 3204
--	------------------------	-----------------------------	---

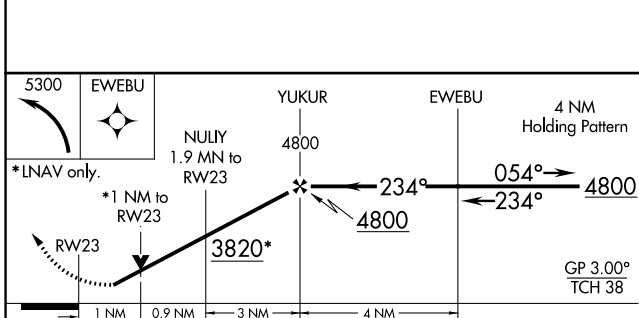
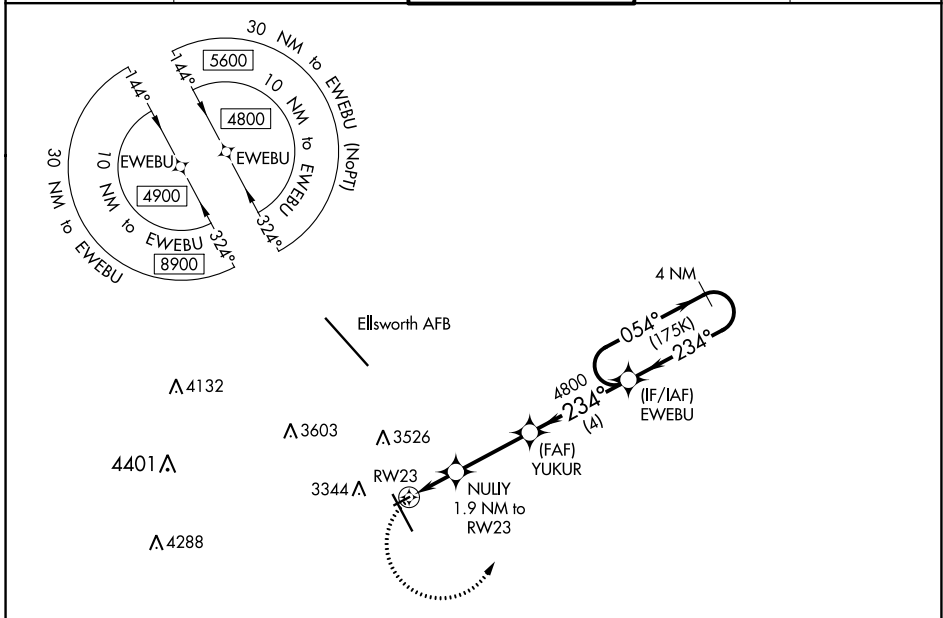
RNAV (GPS) RWY 23

RAPID CITY RGNL (RAP)

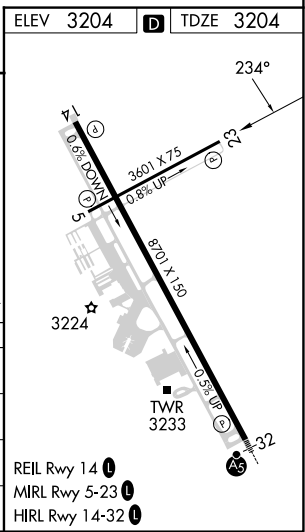
⚠ For uncompensated Baro-VNAV systems, LNAV/VNAV NA below -21°C (-5°F) or above 54°C (130°F). DME/DME RNP-0.3 NA. When local altimeter setting not received, use Ellsworth AFB altimeter setting and increase all DA 25 feet and all MDA 40 feet. VDP and Baro-VNAV NA when using Ellsworth AFB altimeter setting.

MISSED APPROACH: Climbing left turn to 5300 direct EWEBU and hold.

ASOS 118.525	ELLSWORTH APP CON * 119.5 259.1	RAPID CITY TOWER * 125.85 (CTAF) 0 257.8	GND CON 121.9	UNICOM 122.95
------------------------	---	--	-------------------------	-------------------------



CATEGORY	A	B	C	D
LPV DA	3454-1	250 (300-1)		NA
LNAV/VNAV DA	3454-1	250 (300-1)		NA
LNAV MDA	3560-1	356 (400-1)		NA
C CIRCLING	3660-1 456 (500-1)	3840-1 636 (700-1)		NA



NC-1, 22 FEB 2024 to 21 MAR 2024

NC-1, 22 FEB 2024 to 21 MAR 2024

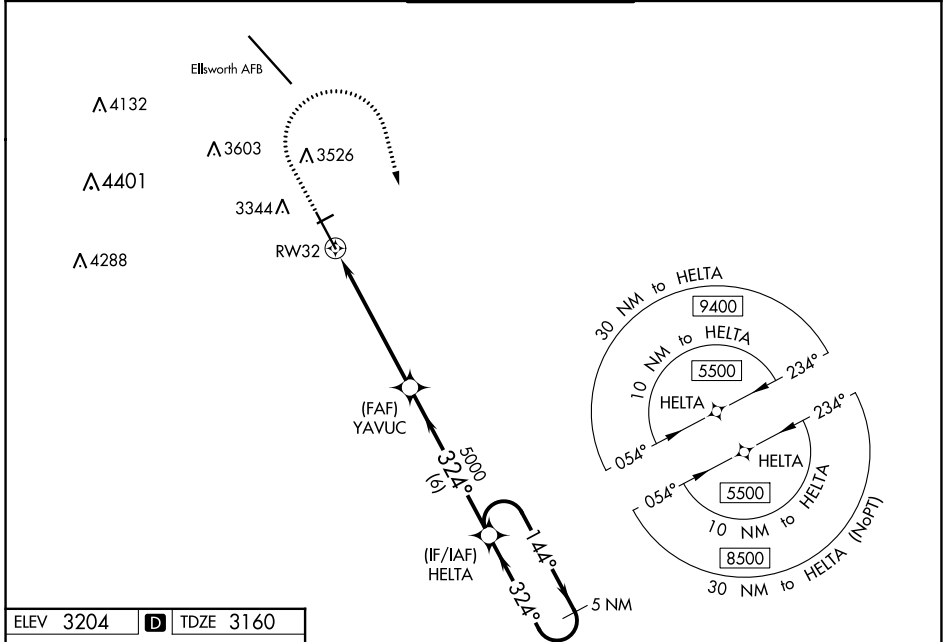
WAAS CH 93717 W32A	APP CRS 324°	Rwy Idg TDZE Apt Elev	8701 3160 3204
--	------------------------	-----------------------------	---

RNAV (GPS) RWY 32

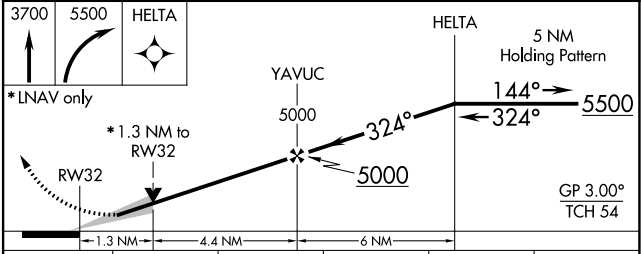
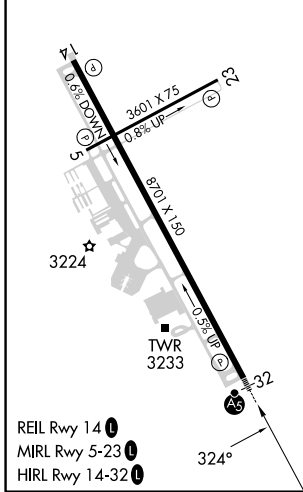
RAPID CITY RGNL (R.A.P)

<p>⚠ For uncompensated Baro-VNAV systems, LNAV/VNAV NA below -24°C (-11°F) or above 51°C (125°F). DME/DME RNP-0.3 NA. For inop ALS, increase LPV Cat E visibility to RVR 4000, LNAV/VNAV all Cats to RVR 4500 and LNAV Cat E to 1$\frac{3}{8}$ SM. # RVR 1800 authorized with use of FD or AP or HUD to DA.</p>	<p>MALSR</p>	<p>MISSED APPROACH: Climb to 3700 then climbing right turn to 5500 direct HELTA and hold.</p>
	<p>⚠</p>	

ASOS 118.525	ELLSWORTH APP CON * 119.5 259.1	RAPID CITY TOWER * 125.85 (CTAF) 0 257.8	GND CON 121.9	UNICOM 122.95
------------------------	---	--	-------------------------	-------------------------



ELEV 3204	D	TDZE 3160
-----------	----------	-----------



CATEGORY	A	B	C	D	E
LPV DA#	3360/24		200 (200- $\frac{1}{2}$)		
LNAV/VNAV DA	3410/24		250 (300- $\frac{1}{2}$)		
LNAV MDA	3620/24		460 (500- $\frac{1}{2}$)		3620/45 460 (500- $\frac{3}{8}$)
C CIRCLING	3660-1 456 (500-1)	3840-1 636 (700-1)	3860-1 $\frac{3}{4}$ 656 (700-1 $\frac{3}{4}$)	3940-2 $\frac{1}{4}$ 736 (800-2 $\frac{1}{4}$)	3960-2 $\frac{3}{4}$ 756 (800-2 $\frac{3}{4}$)

NC-1, 22 FEB 2024 to 21 MAR 2024

NC-1, 22 FEB 2024 to 21 MAR 2024

WAAS CH 82633 W05A	APP CRS 054°	Rwy Idg TDZE Apt Elev	3601 3199 3204
--	------------------------	-----------------------------	---

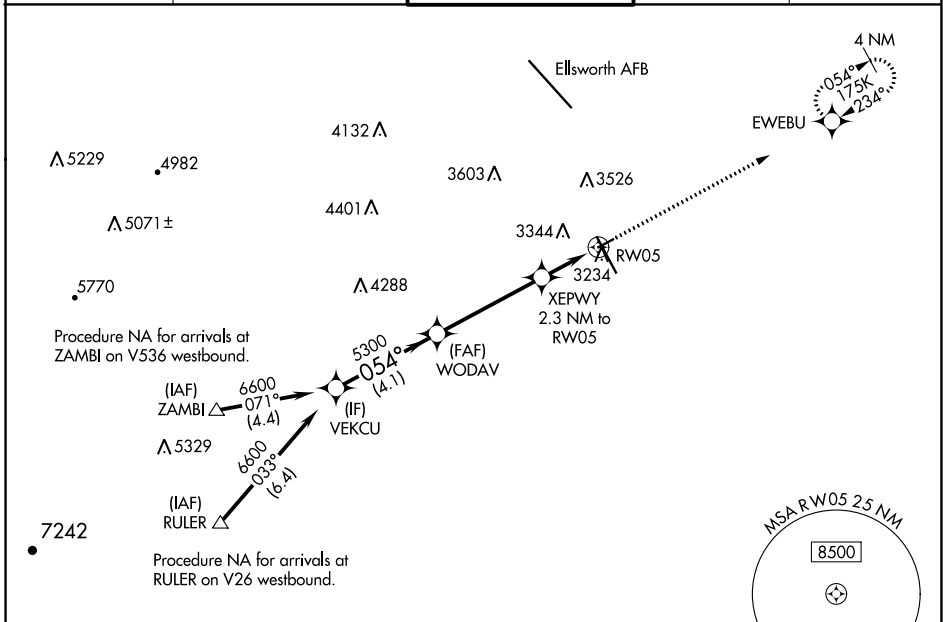
RNAV (GPS) RWY 5

RAPID CITY RGNL (RAP)

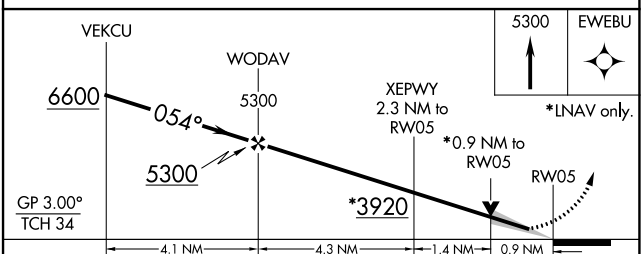
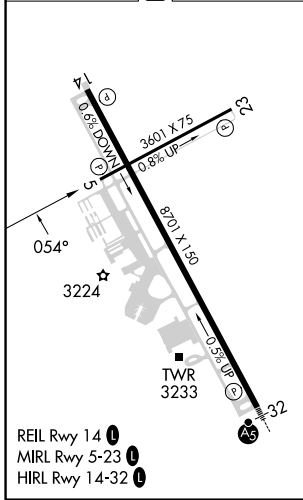
⚠ For uncompensated Baro-VNAV systems, LNAV/VNAV NA below -21°C (-5°F) or above 54°C (130°F). DME/DME RNP-0.3 NA. When local altimeter setting not received, use Ellsworth AFB altimeter setting and increase all DA 25 feet and all MDA 40 feet. VDP and Baro-VNAV NA with Ellsworth AFB altimeter setting.

MISSED APPROACH: Climb to 5300 direct EWEBU and hold.

ASOS 118.525	ELLSWORTH APP CON * 119.5 259.1	RAPID CITY TOWER * 125.85 (CTAF) 0 257.8	GND CON 121.9	UNICOM 122.95
------------------------	---	--	-------------------------	-------------------------



ELEV 3204	D	TDZE 3199
-----------	----------	-----------



CATEGORY	A	B	C	D
LPV DA	3449-1	250 (300-1)		NA
LNAV/VNAV DA	3449-1	250 (300-1)		NA
LNAV MDA	3500-1	301 (300-1)		NA
C CIRCLING	3660-1 456 (500-1)	3840-1 636 (700-1)		NA

NC-1, 22 FEB 2024 to 21 MAR 2024

NC-1, 22 FEB 2024 to 21 MAR 2024

VORTAC RAP 112.3 Chan 70	APP CRS 141°	Rwy ldg 8701 TDZE 3191 Apt Elev 3204
--	------------------------	---

VOR or TACAN RWY 14

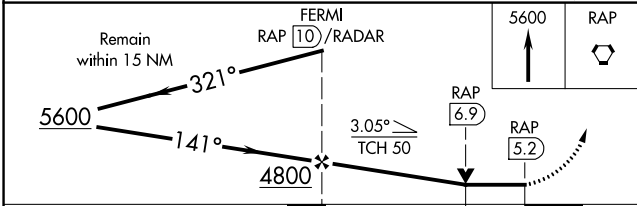
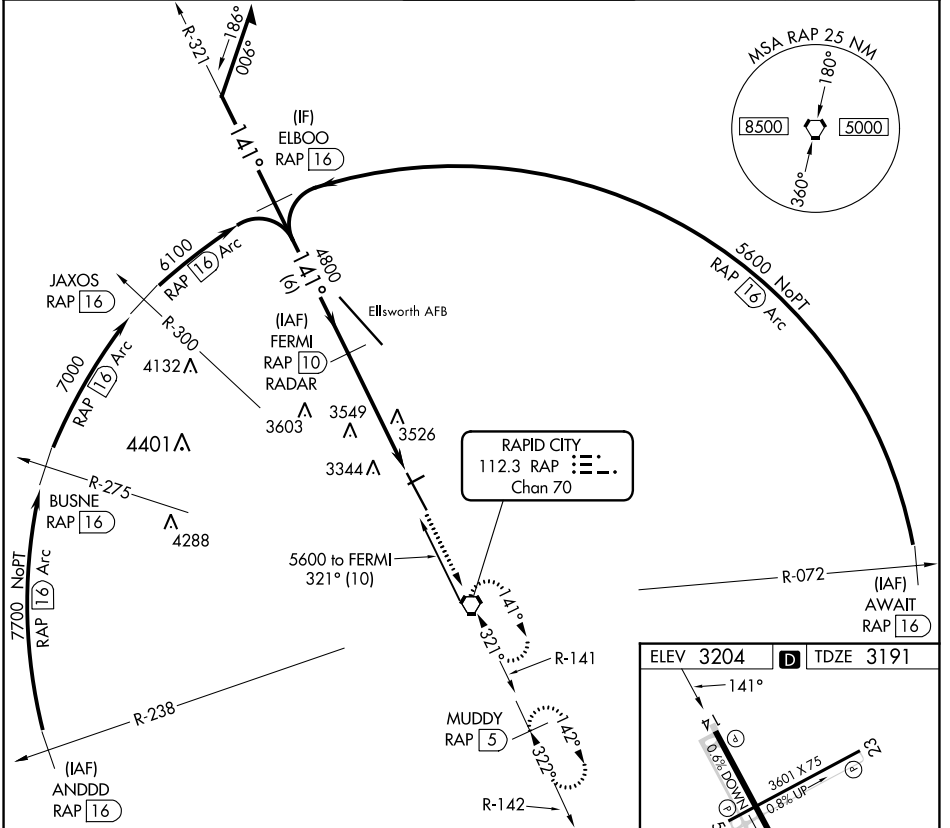
RAPID CITY RGNL (RAP)

DME or RADAR required.

MISSED APPROACH: Climb to 5600 direct RAP VORTAC and hold, continue climb-in-hold to 5600. (TACAN aircraft continue on RAP R-142 to MUDDY 5 DME and hold SE, RT, 322° inbound.)

Rwy 14 helicopter visibility reduction below 3/4 SM NA.

ASOS 118.525	ELLSWORTH APP CON* 119.5 259.1	RAPID CITY TOWER* 125.85 (CTAF) 257.8	GND CON 121.9	UNICOM 122.95
------------------------	--	---	-------------------------	-------------------------



ELEV 3204	TDZE 3191
-----------	-----------

Runway area details:

- Runways:** RWY 14 (3601 X 75), RWY 5-23 (8701 X 150), RWY 14-32.
- Angles:** 141°, 322°, 32°.
- Gradients:** 0.6% DOWN, 0.8% UP, 0.3% UP.
- Obstacles:** 3224 (TWR), 3233 (TWR).
- Distances:** 4.8 NM (FAF to MAP).

REIL Rwy 14	MIRL Rwy 5-23	HIRL Rwy 14-32
-------------	---------------	----------------

FAF to MAP 4.8 NM	Knots	60	90	120	150	180
	Min:Sec	4:48	3:12	2:24	1:55	1:36

CATEGORY	A	B	C	D	E
S-14	3800-1	609 (600-1)	3800-1 3/4	609 (600-1 3/4)	3800-2
CIRCLING	3800-1	3840-1	3860-1 3/4	3940-2 1/4	3960-2 3/4
	596 (600-1)	636 (700-1)	656 (700-1 3/4)	736 (800-2 1/4)	756 (800-2 3/4)

NC-1, 22 FEB 2024 to 21 MAR 2024


NC-1, 22 FEB 2024 to 21 MAR 2024

VORTAC RAP 112.3 Chan 70	APP CRS 322°	Rwy Idg 8701 TDZE 3160 Apt Elev 3204
--	------------------------	---

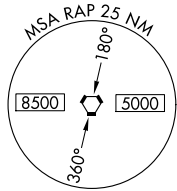
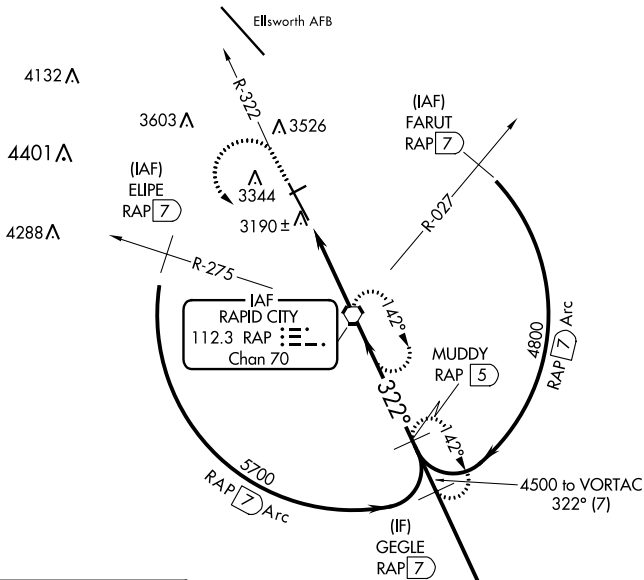
VOR or TACAN RWY 32

RAPID CITY RGNL (R.A.P)

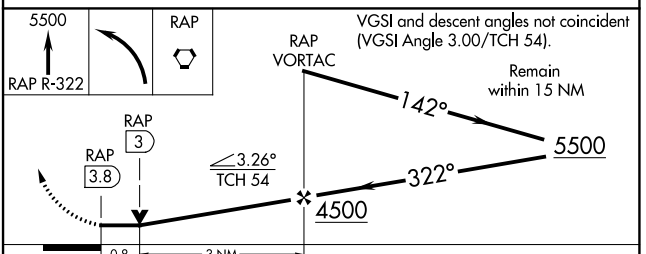
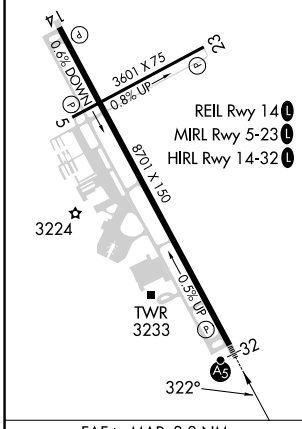
⚠ For inoperative ALS, increase S-32 all Cats visibility to 1 SM.

MALSR

 MISSED APPROACH: Climb to 5500 on RAP R-322 then left turn direct RAP VORTAC and hold. (TACAN aircraft continue on RAP R-142 to MUDDY/RAP 5 DME and hold SE, RT, 322° inbound.)

ASOS 118.525	ELLSWORTH APP CON ★ 119.5 259.1	RAPID CITY TOWER ★ 125.85 (CTAF) 0 257.8	GND CON 121.9	UNICOM 122.95
------------------------	---	--	-------------------------	-------------------------



ELEV 3204	D	TDZE 3160
-----------	----------	-----------



CATEGORY	A	B	C	D	E
S-32	3440/40 280 (300-¾)				
C CIRCLING	3660-1 456 (500-1)	3840-1 636 (700-1)	3860-1¾ 656 (700-1¾)	3940-2¼ 736 (700-2¼)	3960-2¾ 756 (800-2¾)

NC-1, 22 FEB 2024 to 21 MAR 2024

NC-1, 22 FEB 2024 to 21 MAR 2024