

WAAS CH <b>73008</b> <b>W15A</b>	APP CRS <b>151°</b>	Rwy Idg TDZE Apt Elev	<b>5431</b> <b>352</b> <b>352</b>
--	------------------------	-----------------------------	---

# RNAV (GPS) RWY 15

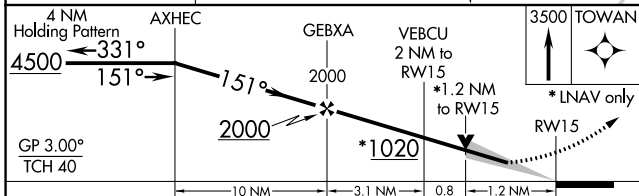
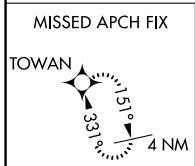
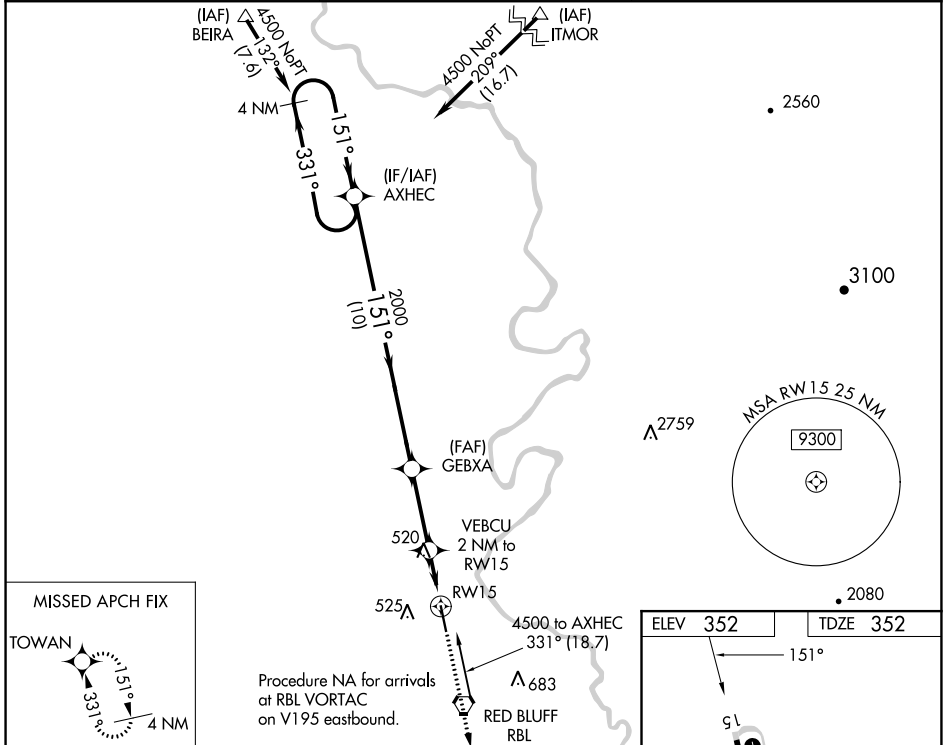
RED BLUFF MUNI (RBL)

RNP APCH.

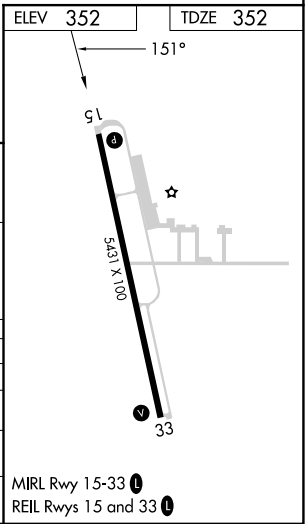
**⚠** Circling to Rwy 33 NA at night. Baro-VNAV and VDP NA when using Redding altimeter setting. For uncompensated Baro-VNAV systems, LNAV/VNAV NA below -2°C or above 54°C. When local altimeter setting not received; use Redding altimeter setting and increase LPV DA to 674 feet and increase LNAV/VNAV DA to 860 feet and increase visibility all Cats 1/8 SM; increase all MDAs 80 feet and LNAV visibility Cats C/D 1/8 SM and Circling visibility Cats C/D 1/2 SM.

**MISSED APPROACH:** Climb to 3500 direct TOWAN and hold.

ASOS <b>120.775</b>	OAKLAND CENTER <b>132.2 350.3</b>	UNICOM <b>123.0 (CTAF) 0</b>
------------------------	--------------------------------------	---------------------------------



CATEGORY	A	B	C	D
LPV DA	602-7/8 250 (300-7/8)			
LNAV/VNAV DA	788-1/4 436 (500-1/4)			
LNAV MDA	780-1 428 (500-1)		780-1/4 428 (500-1/4)	
<b>C</b> CIRCLING	860-1 508 (600-1)		900-1/2 548 (600-1/2) 1060-2/4 708 (800-2/4)	



SW-2, 22 FEB 2024 to 21 MAR 2024

SW-2, 22 FEB 2024 to 21 MAR 2024

WAAS CH <b>42609</b> <b>W33A</b>	APP CRS <b>331°</b>	Rwy Idg TDZE Apt Elev	<b>5431</b> <b>352</b> <b>352</b>
--	------------------------	-----------------------------	---

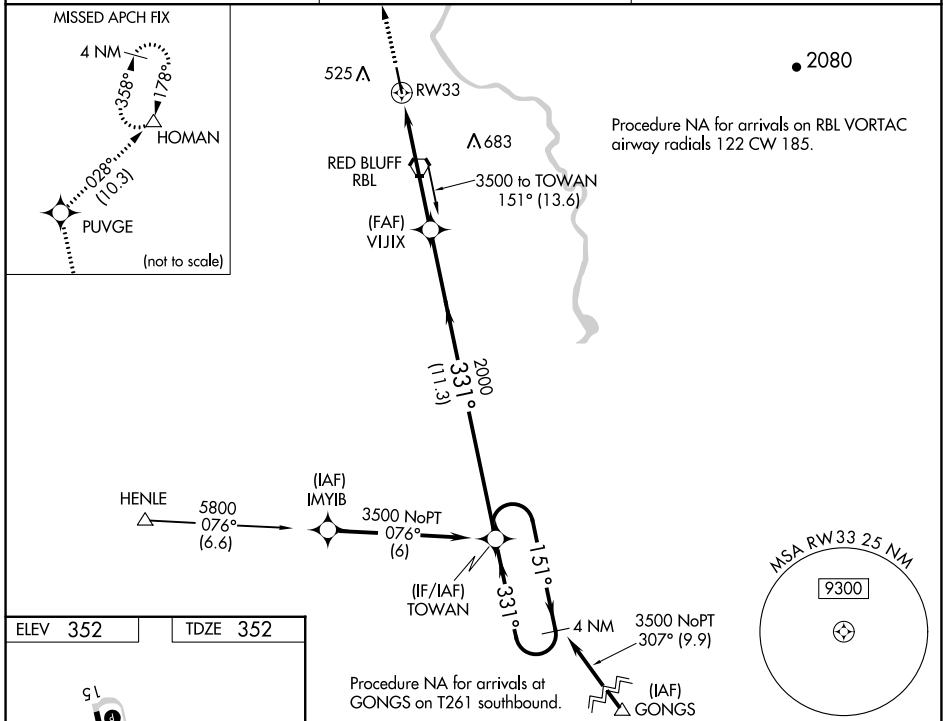
# RNAV (GPS) RWY 33

RED BLUFF MUNI (RBL)

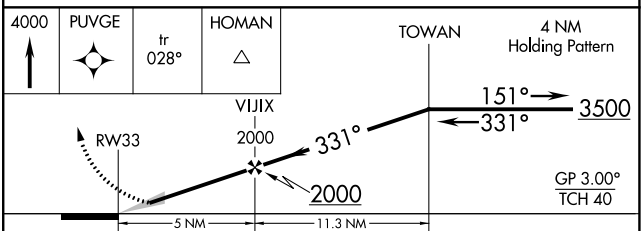
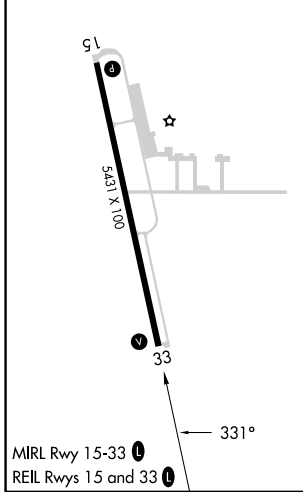
**⚠** Baro-VNAV NA when using Redding altimeter setting. For uncompensated Baro-VNAV systems, LNAV/VNAV NA below -15°C (5°F) or above 48°C (118°F). DME/DME RNP-0.3 NA. When local altimeter setting not received, use Redding altimeter setting and increase all DA/MDA 80 feet and increase LPV all Cats visibility ¼ SM, LNAV/VNAV all Cats visibility ¼ SM, LNAV Cat C visibility ¼ SM and Circling Cats C and D visibility ¼ SM.

**MISSED APPROACH:** Climb to 4000 direct PUVGE and track 028° to HOMAN and hold.

ASOS <b>120.775</b>	OAKLAND CENTER <b>132.2 350.3</b>	UNICOM <b>123.0 (CTAF)</b> <b>📻</b>
------------------------	--------------------------------------	--



ELEV 352	TDZE 352
----------	----------



CATEGORY	A	B	C	D
LPV DA	602-1 250 (300-1)			
LNAV/VNAV DA	718-1¼ 366 (400-1¼)			
LNAV MDA	780-1 428 (500-1)	780-1¼ 428 (500-1¼)	780-1½ 428 (500-1½)	
<b>C</b> CIRCLING	860-1 508 (600-1)	900-1½ 548 (600-1½)	1060-2¼ 708 (800-2¼)	

SW-2, 22 FEB 2024 to 21 MAR 2024

SW-2, 22 FEB 2024 to 21 MAR 2024

VORTAC RBL <b>115.7</b> Chan <b>104</b>	APP CRS <b>328°</b>	Rwy Idg <b>5431</b> TDZE <b>352</b> Apt Elev <b>352</b>
---	------------------------	---

**VOR RWY 33**  
RED BLUFF MUNI (RBL)

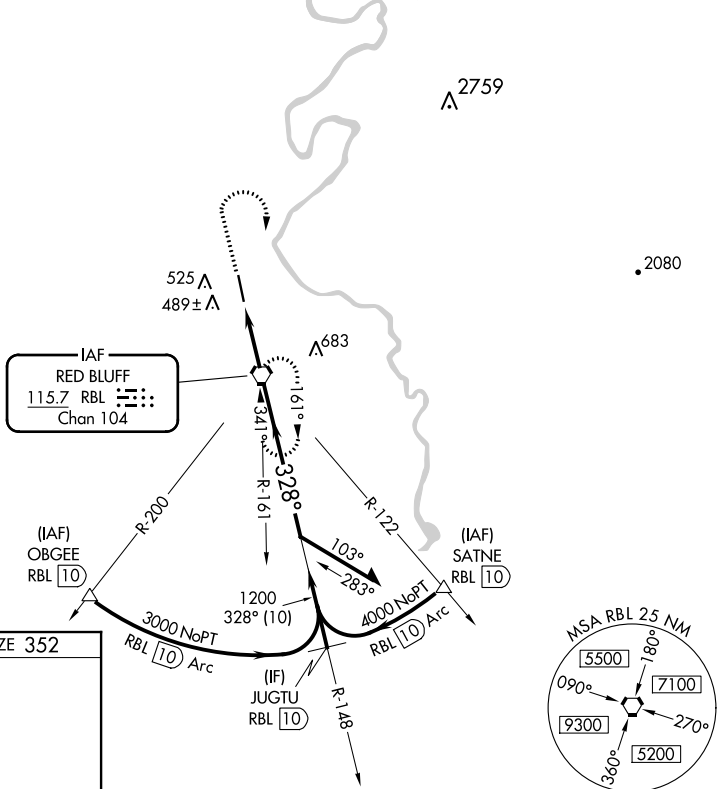
**⚠** When local altimeter setting not received, use Redding altimeter setting and increase all MDAs 80 feet and all Cat C/D visibilities ¼ SM.

MISSED APPROACH: Climb to 1500, then climbing right turn to 2000 direct RBL VORTAC and hold.

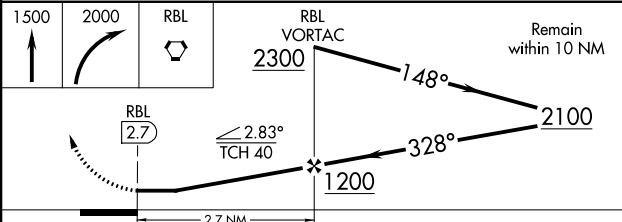
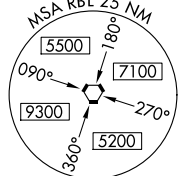
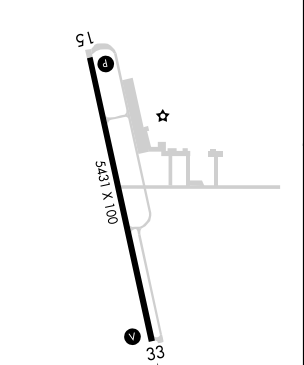
ASOS  
**120.775**

OAKLAND CENTER  
**132.2 350.3**

UNICOM  
**123.0 (CTAF) 0**



ELEV 352 TDZE 352



MIRL Rwy 15-33 (1)  
REIL Rwys 15 and 33 (1)

FAF to MAP 2.7 NM

Knots	60	90	120	150	180
Min:Sec	2:42	1:48	1:21	1:05	0:54

CATEGORY	A	B	C	D
S-33	740-1 388 (400-1)			740-1¼ 388 (400-1¼)
<b>C</b> CIRCLING	880-1 528 (600-1)		900-1½ 548 (600-1½)	1060-2¼ 708 (800-2¼)

SW-2, 22 FEB 2024 to 21 MAR 2024

SW-2, 22 FEB 2024 to 21 MAR 2024

VORTAC RBL <b>115.7</b> Chan <b>104</b>	APP CRS <b>149°</b>	Rwy Idg TDZE <b>352</b> Apt Elev <b>352</b>
---	------------------------	---

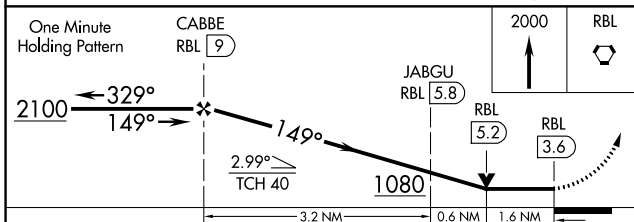
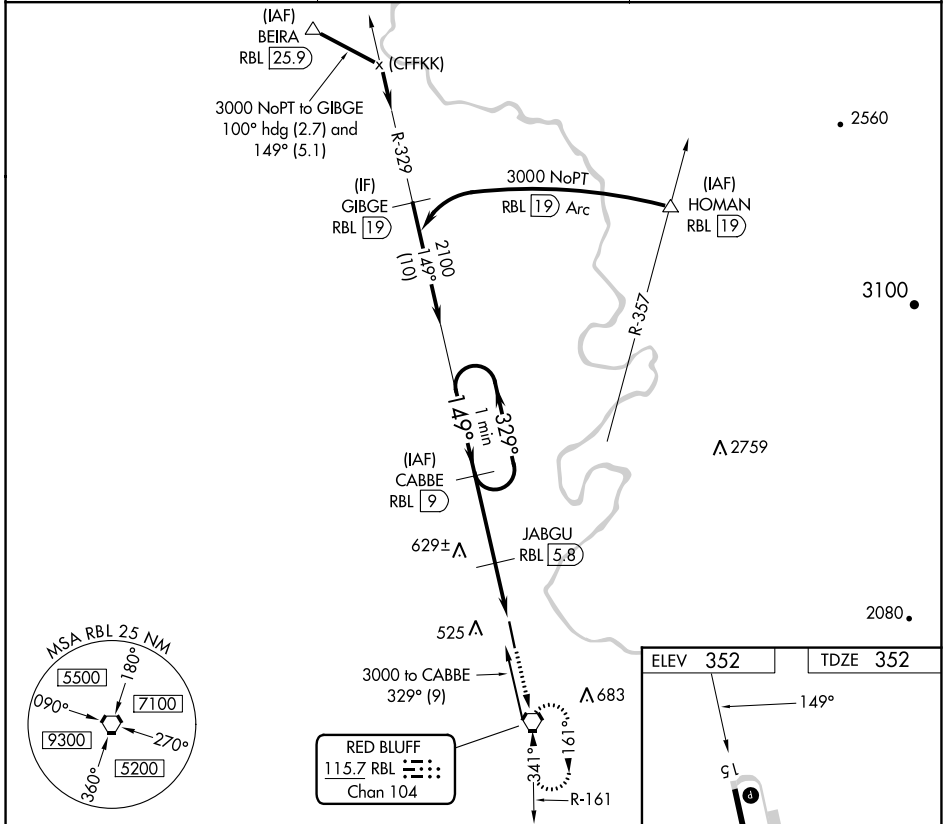
# VOR/DME RWY 15

RED BLUFF MUNI (RBL)

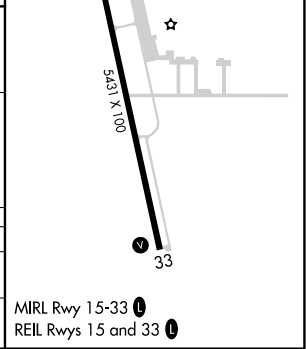
**⚠** When local altimeter setting not received, use Redding altimeter setting and increase all MDAs and all Cat C/D visibility ¼ SM. VDP NA with Redding altimeter setting.

**⚠** MISSED APPROACH: Climb to 2000 direct RBL VORTAC and hold.

ASOS <b>120.775</b>	OAKLAND CENTER <b>132.2 350.3</b>	UNICOM <b>123.0 (CTAF)</b> <b>📻</b>
------------------------	--------------------------------------	--



CATEGORY	A	B	C	D
S-15	880-1 528 (600-1)		880-1½ 528 (600-1½)	
<b>📻</b> CIRCLING	880-1 528 (600-1)		900-1½ 548 (600-1½)	1060-2¼ 708 (800-2¼)



SW-2, 22 FEB 2024 to 21 MAR 2024

SW-2, 22 FEB 2024 to 21 MAR 2024