

LOC/DME I-RBW <b>110.15</b> Chan 38 (Y)	APP CRS <b>229°</b>	Rwy ldg TDZE Apt Elev	<b>6002</b> <b>101</b> <b>101</b>
---	------------------------	-----------------------------	---

# ILS Y or LOC Y RWY 23

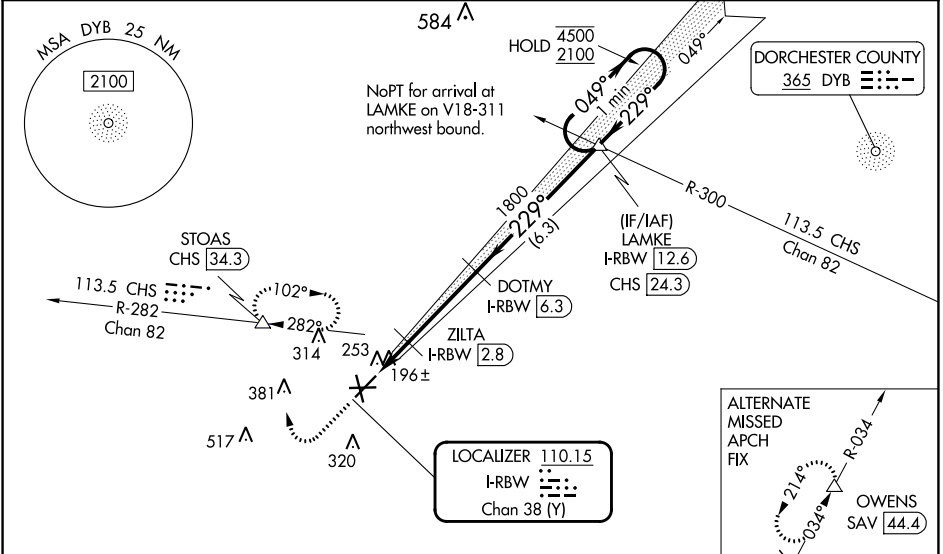
LOWCOUNTRY RGNL (R.B.W)

DME required.

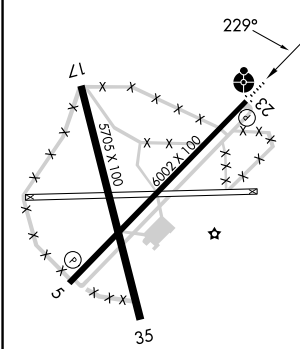
**ODALS**

MISSED APPROACH: Climb to 700 then climbing right turn to 2000 on heading 360° and CHS VORTAC R-282 to STOAS/CHS VORTAC 34.3 DME and hold, continue climb-in-hold to 2000, or as directed by ATC.

AWOS-3PT <b>118.725</b>	CHARLESTON APP CON <b>120.7 306.925</b>	UNICOM <b>122.8 (CTAF)</b>
----------------------------	--	-------------------------------



ELEV 101	TDZE 101
REIL Rwy 23	MIRL Rwy 5-23



700 2000

CHS R-282

STOAS  $\Delta$

VGSI and ILS glidepath not coincident (VGSI Angle 3.00/TCH 46).

One Minute Holding Pattern

DOTMY I-RBW 6.3

LAMKE I-RBW 12.6

1800

049°

229°

4500

2100

GS 3.00° TCH 43

1800

680

I-RBW 1.1

I-RBW 2.1

ZILTA I-RBW 2.8

1 NM 0.7 3.5 NM 6.3 NM

FAF to MAP 5.2 NM					
Knots	60	90	120	150	180
Min:Sec	5:12	3:28	2:36	2:05	1:44
<input checked="" type="checkbox"/> CIRCLING	620-1 519 (600-1)		700-1½ 599 (600-1½)		700-2 599 (600-2)

SE-2, 22 FEB 2024 to 21 MAR 2024

SE-2, 22 FEB 2024 to 21 MAR 2024

LOC/DME I-RBW <b>110.15</b> Chan <b>38</b> (Y)	APP CRS <b>229°</b>	Rwy Idg <b>6002</b> TDZE <b>101</b> Apt Elev <b>101</b>
--	------------------------	---

# ILS Z or LOC Z RWY 23

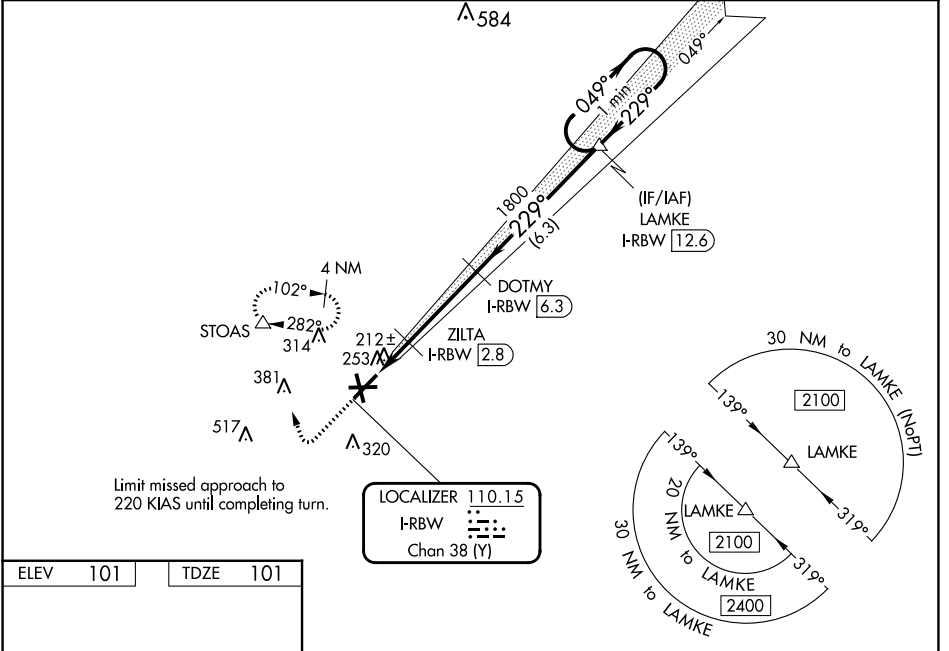
LOWCOUNTRY RGNL (R.BW)

**⚠ NA** Inop table does not apply to S-LOC 23 Cat C. GPS and DME required. Helicopter visibility reduction below 3/4 SM NA. VDP NA with Charleston AFB/Intl altimeter setting. When local altimeter setting not received, use Charleston AFB/Intl altimeter setting: increase S-ILS 23 DA to 379 feet and all MDA 80 feet; increase S-LOC 23 Cats C/D visibility 1/8 mile and Circling Cat C visibility 1/2 mile and Circling Cat D visibility 1/4 mile. For inop ODALS when using Charleston AFB/Intl altimeter setting, increase S-ILS 23 all Cats visibility to 1/8 mile and S-LOC 23 Cat D visibility to 1 3/8 mile.

**ODALS**

**MISSED APPROACH:** Climb to 1500 then climbing right turn to 2000 direct STOAS and hold.

AWOS-3PT <b>118.725</b>	CHARLESTON APP CON <b>120.7 306.925</b>	UNICOM <b>122.8</b> (CTAF)
----------------------------	--	-------------------------------



ELEV <b>101</b>	TDZE <b>101</b>
-----------------	-----------------

**1500** **2000** **STOAS**  $\Delta$

VGSI and ILS glidepath not coincident (VGSI Angle 3.00/TCH 46).

One Minute Holding Pattern

**LAMKE I-RBW [12.6]**

**DOTMY I-RBW [6.3]**

**ZILTA I-RBW [2.8]**

**I-RBW [1.1]** **\*I-RBW [2.2]**

**1800** **1800** **2100**

**229°**  $\Delta$  **049°**  $\Delta$  **229°**

**680\***

**GS 3.00° TCH 43**

**1 NM** **0.7** **3.5 NM** **6.3 NM**

REIL Rwy 23 MIRL Rwy 5-23
WALTERBORO, SOUTH CAROLINA Orig 03MAR16
32°55'N-80°38'W
LOWCOUNTRY RGNL (R.BW)
ILS Z or LOC Z RWY 23

CATEGORY	A	B	C	D
S-ILS 23	301-3/4 200 (200-3/4)			
S-LOC 23	480-3/4 379 (400-3/4)	480-1 379 (400-1)		
CIRCLING	620-1 519 (600-1)	640-1 539 (600-1)	700-1 1/2 599 (600-1 1/2)	700-2 599 (600-2)

SE-2, 22 FEB 2024 to 21 MAR 2024

SE-2, 22 FEB 2024 to 21 MAR 2024

WAAS CH <b>93616</b> <b>W17A</b>	APP CRS <b>171°</b>	Rwy Idg TDZE Apt Elev	<b>5705</b> <b>93</b> <b>101</b>
--	------------------------	-----------------------------	--

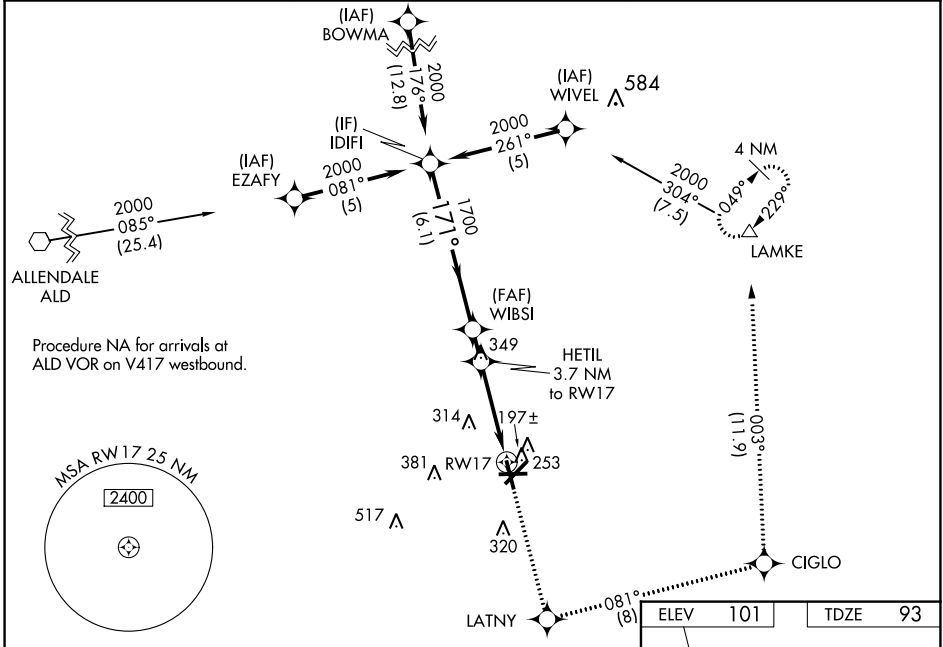
# RNAV (GPS) RWY 17

LOWCOUNTRY RGNL (R.B.W)

**⚠** For uncompensated Baro-VNAV systems, LNAV/VNAV NA below -15°C (5°F) or above 54°C (130°F). Baro-VNAV and VDP NA when using Charleston Intl/AFB altimeter setting.  
**⚠** DME/DME RNP-0.3 NA. When local altimeter setting not received, use Charleston AFB/Intl altimeter setting: increase LPV DA to 421 feet and LNAV/VNAV DA to 587 feet and all MDA 80 feet; increase LPV visibility all Cats 1/8 mile; increase LNAV/VNAV visibility all Cats, LNAV Cats C/D, and Circling Cat D visibility 1/4 mile; increase Circling Cat C visibility 1/2 mile.

**MISSED APPROACH:**  
 Climb to 2100 direct LATNY and on track 081° to CIGLO and track 003° to LAMKE and hold.

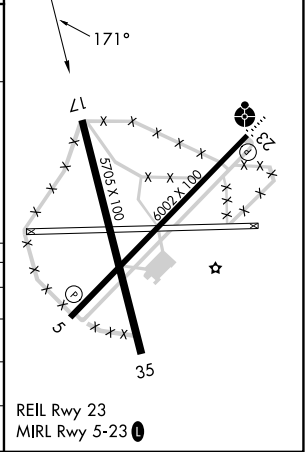
AWOS-3PT <b>118.725</b>	CHARLESTON APP CON <b>120.7 306.925</b>	UNICOM <b>122.8 (CTAF) 0</b>
----------------------------	--	---------------------------------



SE-2, 22 FEB 2024 to 21 MAR 2024

SE-2, 22 FEB 2024 to 21 MAR 2024

	ELEV 101	TDZE 93						
GP 3.00° TCH 40	<table border="1"> <tr> <td>↑</td> <td>LATNY</td> <td>tr 081°</td> <td>CIGLO</td> <td>tr 003°</td> <td>LAMKE</td> </tr> </table>	↑	LATNY	tr 081°	CIGLO	tr 003°	LAMKE	
↑	LATNY	tr 081°	CIGLO	tr 003°	LAMKE			
<table border="1"> <tr> <td>2000</td> <td>1700</td> <td>1300</td> <td>1700</td> </tr> </table>	2000	1700	1300	1700	*LNAV only.			
2000	1700	1300	1700					
<table border="1"> <tr> <td>6.1 NM</td> <td>1.2 NM</td> <td>2.3 NM</td> <td>1.4 NM</td> </tr> </table>	6.1 NM	1.2 NM	2.3 NM	1.4 NM				
6.1 NM	1.2 NM	2.3 NM	1.4 NM					
CATEGORY	A	B	C	D				
LPV DA	343-1 250 (300-1)							
LNAV/VNAV DA	508-1½ 415 (500-1½)							
LNAV MDA	580-1 487 (500-1)		580-1⅔ 487 (500-1⅔)					
<b>C</b> CIRCLING	620-1 519 (600-1)	640-1 539 (600-1)	700-1½ 599 (600-1½)	700-2 599 (600-2)				



REIL Rwy 23  
 MIRL Rwy 5-23 0

WAAS CH <b>61016</b> <b>W23A</b>	APP CRS <b>229°</b>	Rwy ldg TDZE Apt Elev	<b>6002</b> <b>101</b> <b>101</b>
--	------------------------	-----------------------------	---

# RNAV (GPS) RWY 23

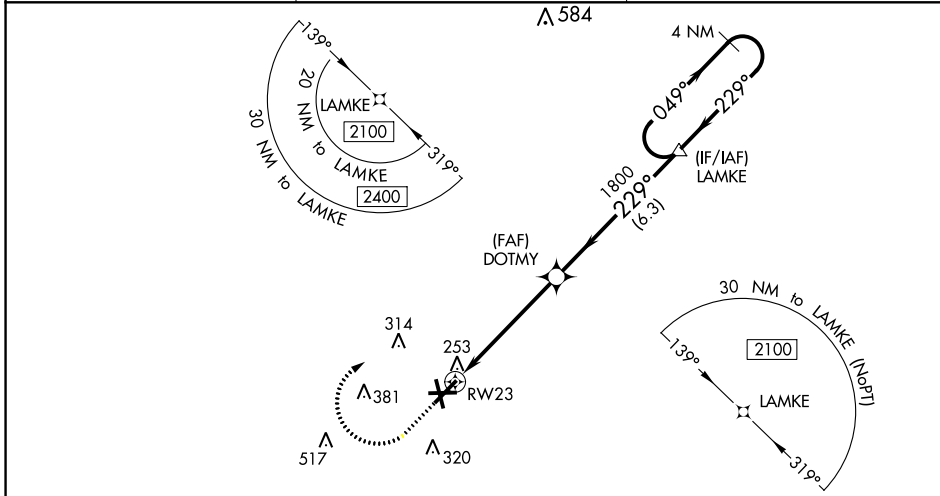
LOWCOUNTRY RGNL (R.BW)

**⚠** For uncompensated Baro-VNAV systems, LNAV/VNAV NA below -15°C (5°F) or above 54°C (130°F). Baro-VNAV and VDP NA when using Charleston AFB/Intl altimeter setting. DME/DME RNP-0.3 NA. Helicopter visibility reduction below ¼ SM NA. For inop ODALS, increase LNAV/VNAV all Cats visibility to 1¼ mile and LNAV Cat D visibility to 1½ mile. When local altimeter setting not received, use Charleston AFB/Intl altimeter setting; increase LPV DA to 379 feet and LNAV/VNAV DA to 542 feet and all MDA 80 feet; increase LNAV/VNAV visibility all Cats, LNAV Cats C/D visibility, and Circling Cat D visibility ¼ mile; increase Circling Cat C visibility ½ mile. For inop ODALS when using Charleston AFB/Intl altimeter setting, increase LPV all Cats visibility to ¾ mile and LNAV/VNAV all Cats and LNAV Cats C/D visibility to 1½ mile.

**ODALS**

**MISSED APPROACH:** Climb to 1200 then climbing right turn to 2100 direct LAMKE and hold.

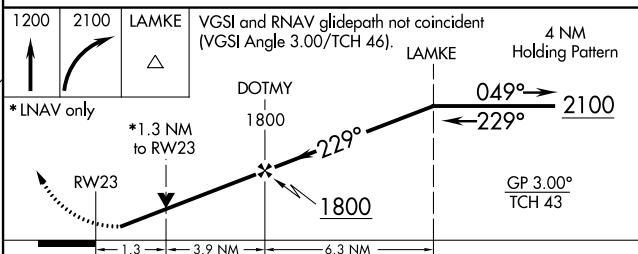
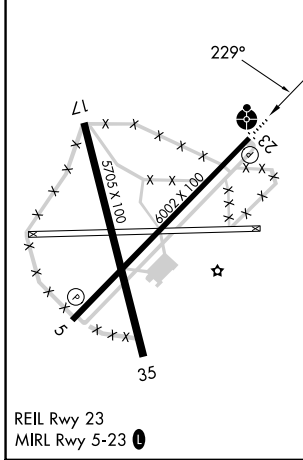
AWOS-3PT <b>118.725</b>	CHARLESTON APP CON <b>120.7 306.925</b>	UNICOM <b>122.8 (CTAF)</b>
----------------------------	--	-------------------------------



SE-2, 22 FEB 2024 to 21 MAR 2024

SE-2, 22 FEB 2024 to 21 MAR 2024

ELEV	101	TDZE	101
------	-----	------	-----



CATEGORY	A	B	C	D
LPV DA		301-¾	200 (200-¾)	
LNAV/VNAV DA		464-1½	363 (400-1½)	
LNAV MDA	560-¾	459 (500-¾)	560-1½	459 (500-1½)
<b>C</b> CIRCLING	620-1 519 (600-1)	640-1 539 (600-1)	700-1½ 599 (600-1½)	700-2 599 (600-2)

WAAS CH <b>48916</b> <b>W35A</b>	APP CRS <b>351°</b>	Rwy Idg TDZE Apt Elev	<b>5705</b> <b>95</b> <b>101</b>
--	------------------------	-----------------------------	--

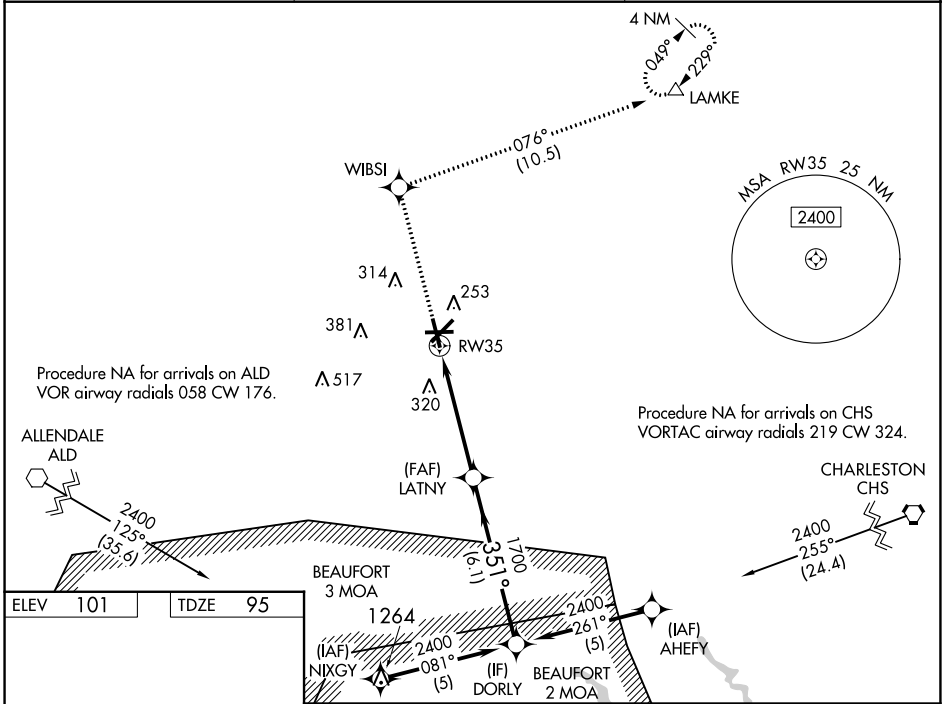
# RNAV (GPS) RWY 35

LOWCOUNTRY RGNL (R.B.W)

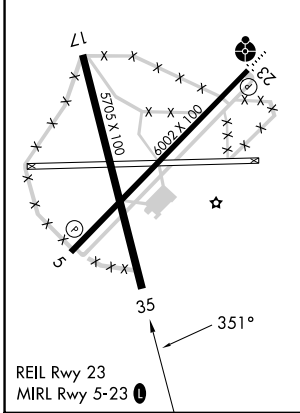
**⚠** For uncompensated Baro-VNAV systems, LNAV/VNAV NA below -15°C (5°F) or above 54°C (130°F). Baro-VNAV and VDP NA when using Charleston AFB/Intl altimeter setting.  
**⚠** DME/DME RNP-0.3 NA. When local altimeter setting not received, use Charleston AFB/Intl altimeter setting: increase LPV DA to 476 feet and LNAV/VNAV DA to 525 feet and all MDA 80 feet; increase LPV visibility all Cats, LNAV/VNAV visibility all Cats, LNAV Cats C/D visibility, and Circling Cat D visibility ¼ mile; increase Circling Cat C visibility ½ mile.

**MISSED APPROACH:**  
Climb to 2100 direct WIBSI and on track 076° to LAMKE and hold.

AWOS-3PT <b>118.725</b>	CHARLESTON APP CON <b>120.7 306.925</b>	UNICOM <b>122.8 (CTAF) 0</b>
----------------------------	--	---------------------------------



ELEV 101	TDZE 95
----------	---------



2100	WBSI	tr 076°	LAMKE	DORLY	
*LNAV only.		*1.3 NM to RW35		GP 3.00° TCH 40	
1.3 NM		3.6 NM		6.1 NM	
CATEGORY	A	B	C	D	
LPV DA	398-1		303 (300-1)		
LNAV/VNAV DA	447-1¼		352 (400-1¼)		
LNAV MDA	560-1	465 (500-1)		560-1¾	465 (500-1¾)
<input checked="" type="checkbox"/> CIRCLING	620-1 519 (600-1)	640-1 539 (600-1)	700-1½ 599 (600-1½)	700-2 599 (600-2)	

WAAS CH <b>82232</b> <b>W05A</b>	APP CRS <b>049°</b>	Rwy Idg TDZE <b>96</b> Apt Elev <b>101</b>	<b>6002</b>
--	------------------------	--	-------------

# RNAV (GPS) RWY 5

LOWCOUNTRY RGNL (R.B.W)

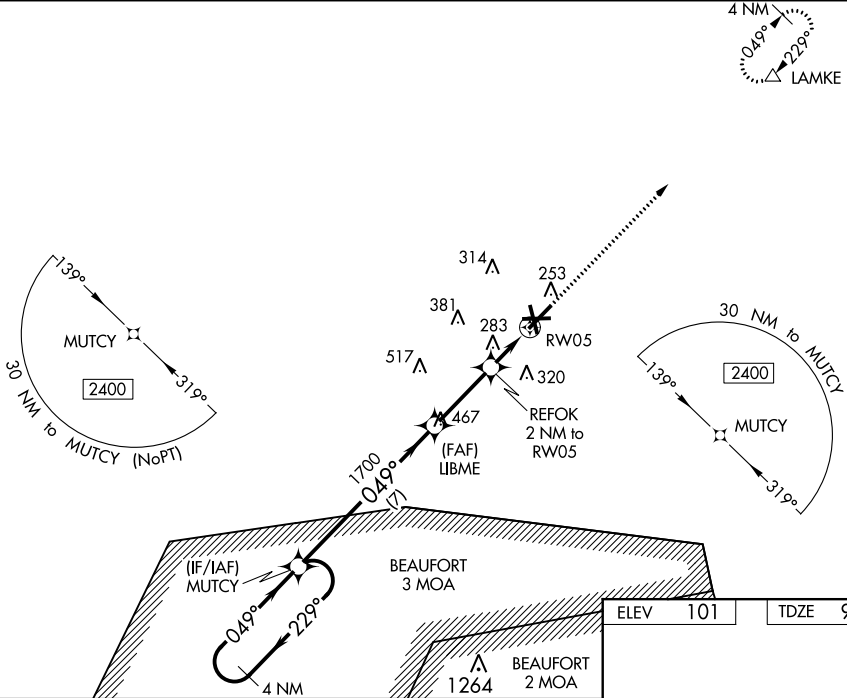
**⚠** For uncompensated Baro-VNAV systems, procedure NA below -15°C (5°F) or above 54°C (130°F).  
**⚠** DME/DME RNP-0.3 NA. VDP and Baro-VNAV NA when using Charleston AFB/Intl altimeter setting.  
 Helicopter visibility reduction below ¼ SM NA. When local altimeter setting not received, use Charleston AFB/Intl altimeter setting and increase all DA 78 feet and all MDA 80 feet; increase LPV, LNAV/VNAV all Cats and Circling Cat D visibility ¼ mile, increase LNAV Cat C - D visibility ½ mile, increase Circling Cat C visibility ½ mile.

**MISSED APPROACH:**  
 Climb to 2100 direct LAMKE and hold.

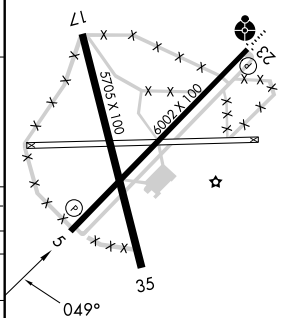
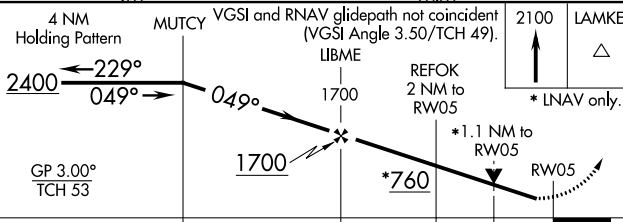
AWOS-3PT  
**118.725**

CHARLESTON APP CON  
**120.7 306.925**

UNICOM  
**122.8 (CTAF) 0**



ELEV	101	TDZE	96
------	-----	------	----



CATEGORY	A	B	C	D
LPV DA		431-1 1/8	335 (400-1 1/8)	
LNAV/VNAV DA		507-1 3/8	411 (500-1 3/8)	
LNAV MDA	540-1	444 (500-1)	540-1 3/8	444 (500-1 3/8)
<b>C</b> CIRCLING	620-1 519 (600-1)	640-1 539 (600-1)	700-1 1/2 599 (600-1 1/2)	700-2 599 (600-2)

REIL Rwy 23  
 MIRL Rwy 5-23 0

SE-2, 22 FEB 2024 to 21 MAR 2024

SE-2, 22 FEB 2024 to 21 MAR 2024