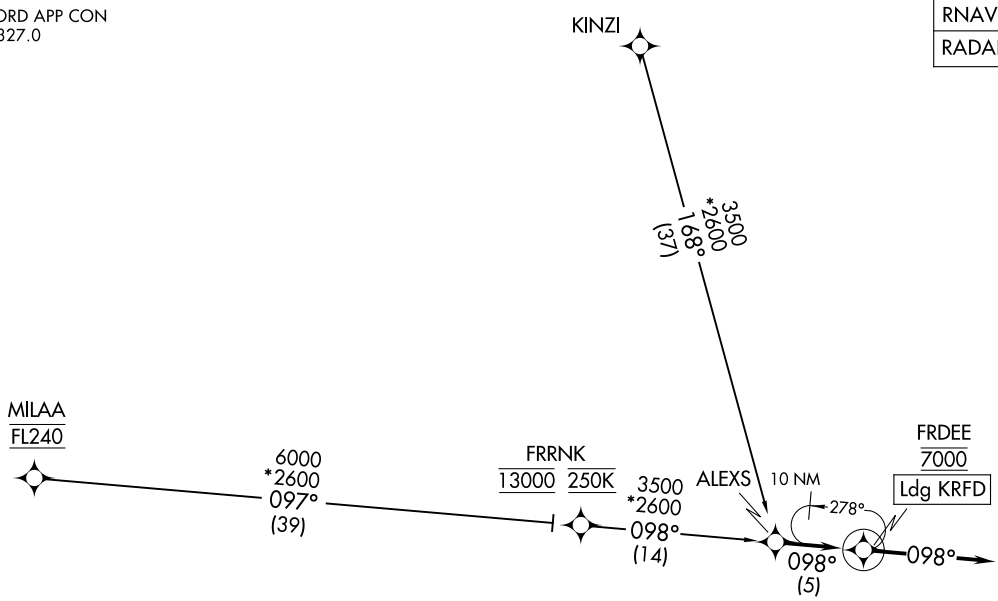


RNAV 1 - DME/DME/IRU or GPS.  
RADAR required.

(ALEXS.ALEXS1) 24025  
ALEXS ONE ARRIVAL (RNAV)

AL-954 (FAA)

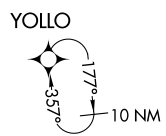
CHICAGO/ROCKFORD INTL (R.F.D.)  
CHICAGO/ROCKFORD, ILLINOIS



ARRIVAL ROUTE DESCRIPTION

- KINZI TRANSITION (KINZI.ALEXS1)
- MILAA TRANSITION (MILAA.ALEXS1)

From ALEXS on track 098° to cross FRDEE at 7000, then on track 098°. Expect RADAR vectors to final approach course.



NOTE: Chart not to scale.

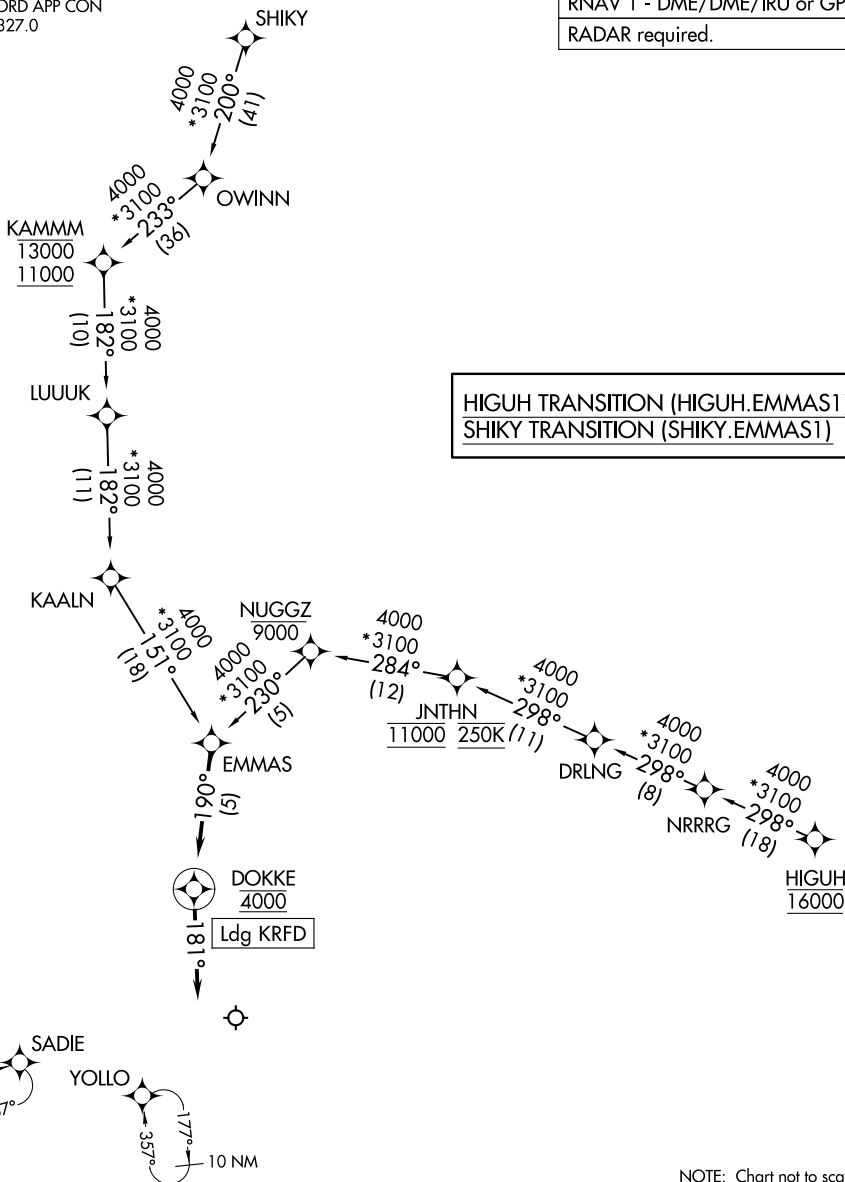
ALEXS ONE ARRIVAL (RNAV)  
(ALEXS.ALEXS1) 251AN24

CHICAGO/ROCKFORD, ILLINOIS  
CHICAGO/ROCKFORD INTL (R.F.D.)

# EMMAS ONE ARRIVAL (RNAV)

ROCKFORD APP CON  
121.0 327.0  
ATIS  
127.6

RNAV 1 - DME/DME/IRU or GPS.  
RADAR required.



EC-3, 22 FEB 2024 to 21 MAR 2024

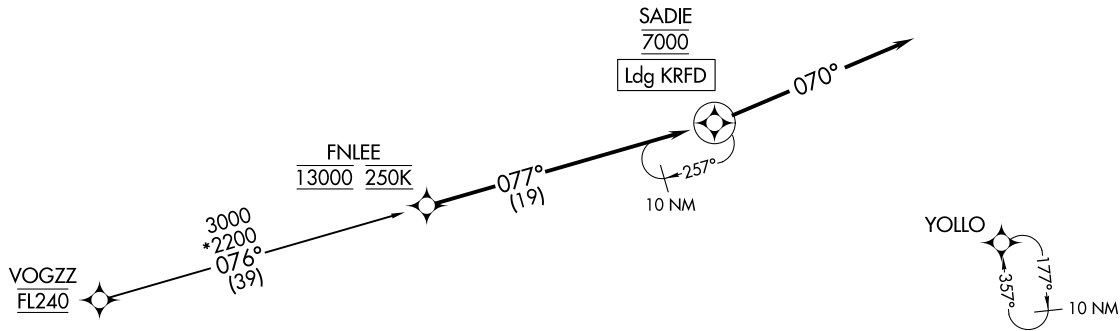
EC-3, 22 FEB 2024 to 21 MAR 2024

RNAV 1 - DME/DME/IRU or GPS.  
RADAR required.

(FNLEE:FNLEE1) 24025  
FNLEE ONE ARRIVAL (RNAV)

AL-954 (FAA)

CHICAGO/ROCKFORD INTL (RFD)  
CHICAGO/ROCKFORD, ILLINOIS



**ARRIVAL ROUTE DESCRIPTION**  
**VOGZZ TRANSITION (VOGZZ.FNLEE1)**  
 From FNLEE on track 077° to cross SADIE at 7000, then on track 070°.  
 Expect RADAR vectors to final approach course.

ROCKFORD APP CON  
121.0 327.0  
ATIS  
127.6

FNLEE ONE ARRIVAL (RNAV)  
(FNLEE:FNLEE1) 25JAN24

CHICAGO/ROCKFORD, ILLINOIS  
CHICAGO/ROCKFORD INTL (RFD)

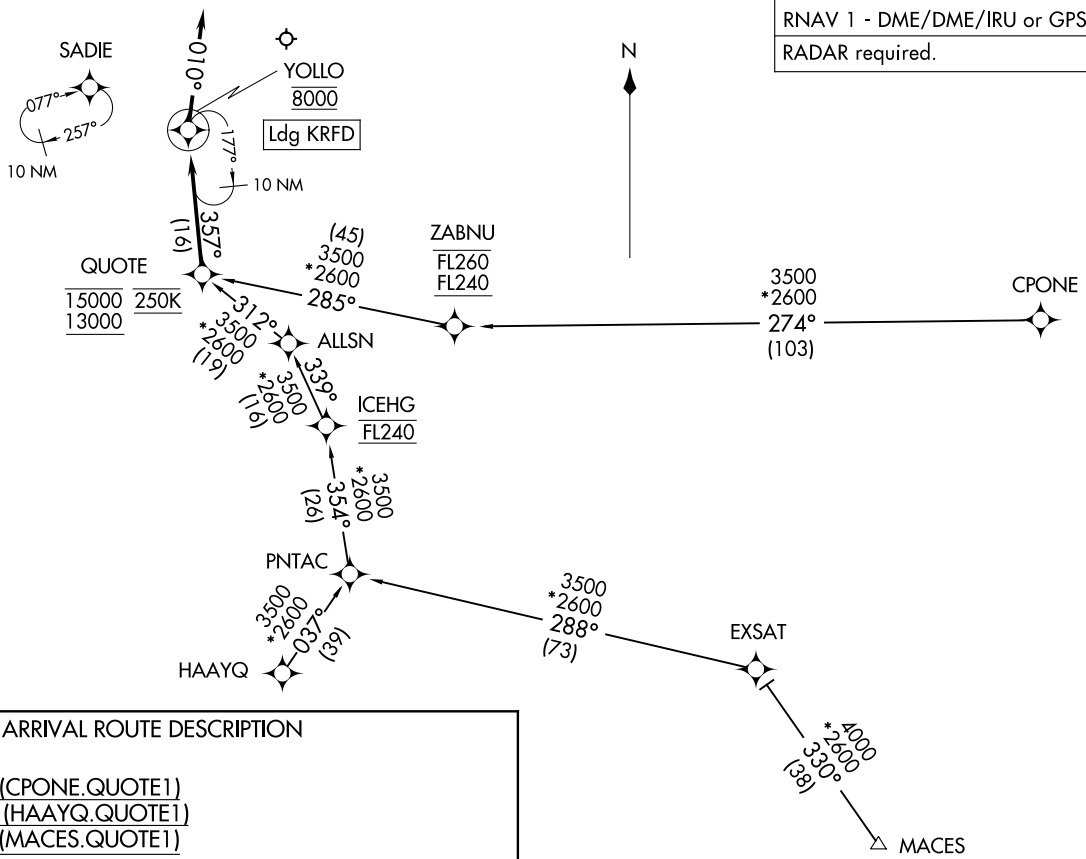
NOTE: Chart not to scale.

QUOTE ONE ARRIVAL (RNAV)  
[QUOTE:QUOTE1] 25JAN24  
CHICAGO/ROCKFORD INTL (RFD)  
CHICAGO/ROCKFORD, ILLINOIS

ROCKFORD APP CON  
121.0 327.0  
ATIS  
127.6

RNAV 1 - DME/DME/IRU or GPS.  
RADAR required.

QUOTE ONE ARRIVAL (RNAV) 24025  
AL-954 (FAA)  
CHICAGO/ROCKFORD INTL (RFD)  
CHICAGO/ROCKFORD, ILLINOIS



**ARRIVAL ROUTE DESCRIPTION**

CPONE TRANSITION (CPONE.QUOTE1)  
HAAYQ TRANSITION (HAAYQ.QUOTE1)  
MACES TRANSITION (MACES.QUOTE1)

From QUOTE on track 357° to cross YOLLO at 8000, then on track 010°. Expect RADAR vectors to final approach course.

NOTE: Chart not to scale.