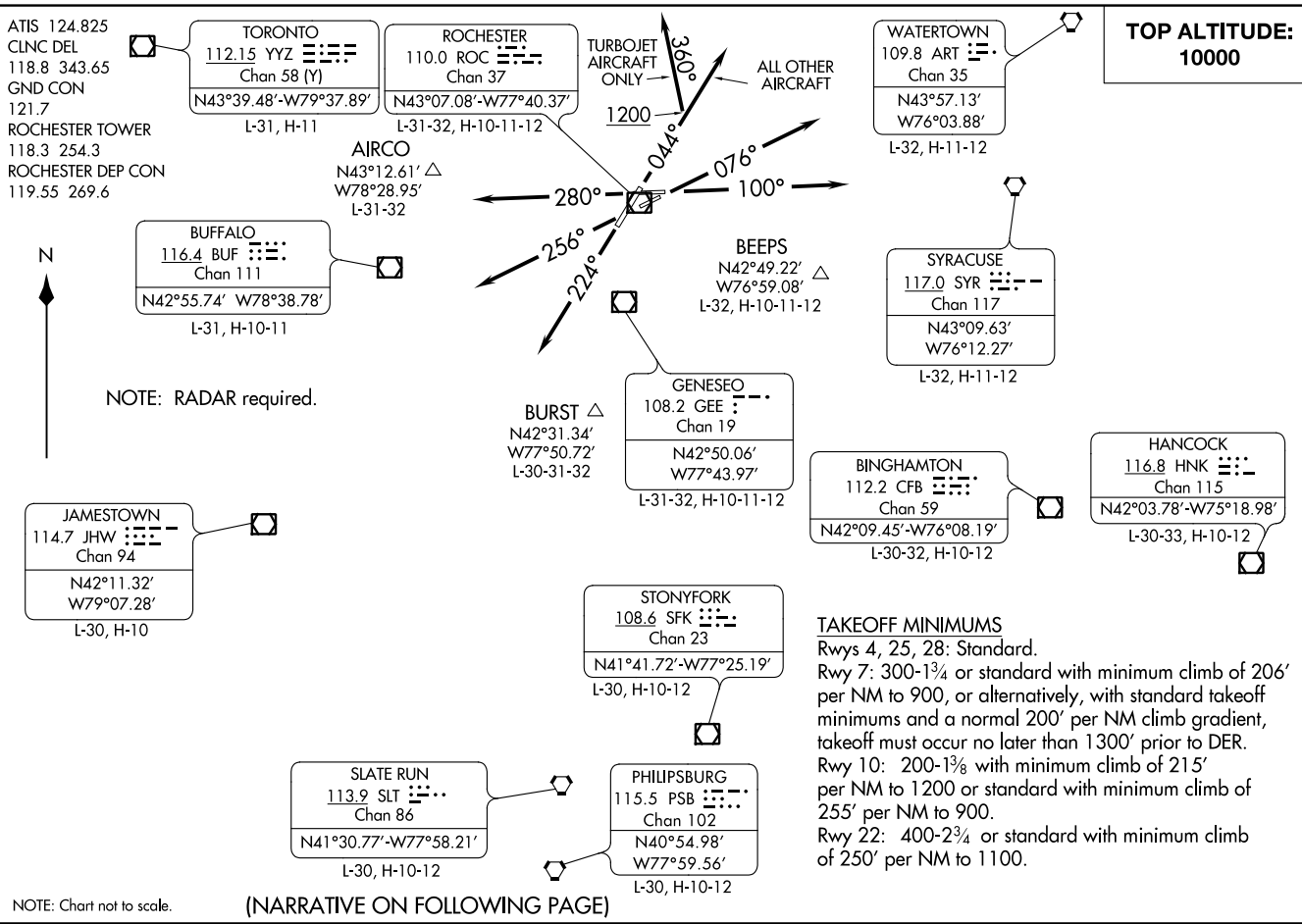


XEROX SIX DEPARTURE
(XEROX6.XEROX) 190U118

FREDERICK DOUGLASS-GREATER ROCHESTER INTL (ROO)
ROCHESTER, NEW YORK



(XEROX6.XEROX) 203110
XEROX SIX DEPARTURE

FREDERICK DOUGLASS-GREATER ROCHESTER INTL (ROO)
AL-351 (FAA)
ROCHESTER, NEW YORK

TAKEOFF MINIMUMS

Rwys 4, 25, 28: Standard.
Rwy 7: 300-1¾ or standard with minimum climb of 206' per NM to 900, or alternatively, with standard takeoff minimums and a normal 200' per NM climb gradient, takeoff must occur no later than 1300' prior to DER.
Rwy 10: 200-1⅜ with minimum climb of 215' per NM to 1200 or standard with minimum climb of 255' per NM to 900.
Rwy 22: 400-2¾ or standard with minimum climb of 250' per NM to 1100.



DEPARTURE ROUTE DESCRIPTION

TAKEOFF RUNWAY 4: TURBOJET AIRCRAFT ONLY: Climb heading 044° to 1 200, then heading 360°, thence . . .

ALL OTHER AIRCRAFT: Climb heading 044°, thence . . .

TAKEOFF RUNWAY 7: Climb heading 076°, thence . . .

TAKEOFF RUNWAY 10: Climb heading 100°, thence . . .

TAKEOFF RUNWAY 22: Climb heading 224°, thence . . .

TAKEOFF RUNWAY 25: Climb heading 256°, thence . . .

TAKEOFF RUNWAY 28: Climb heading 280°, thence . . .

. . . expect RADAR vectors to intercept filed/assigned route or enroute fix or navaid. Maintain 10000 or assigned lower altitude. Expect further clearance to requested altitude/flight level ten minutes after departure.

NE-2, 28 JAN 2021 to 25 FEB 2021

NE-2, 28 JAN 2021 to 25 FEB 2021