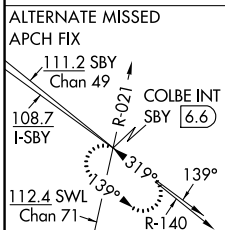
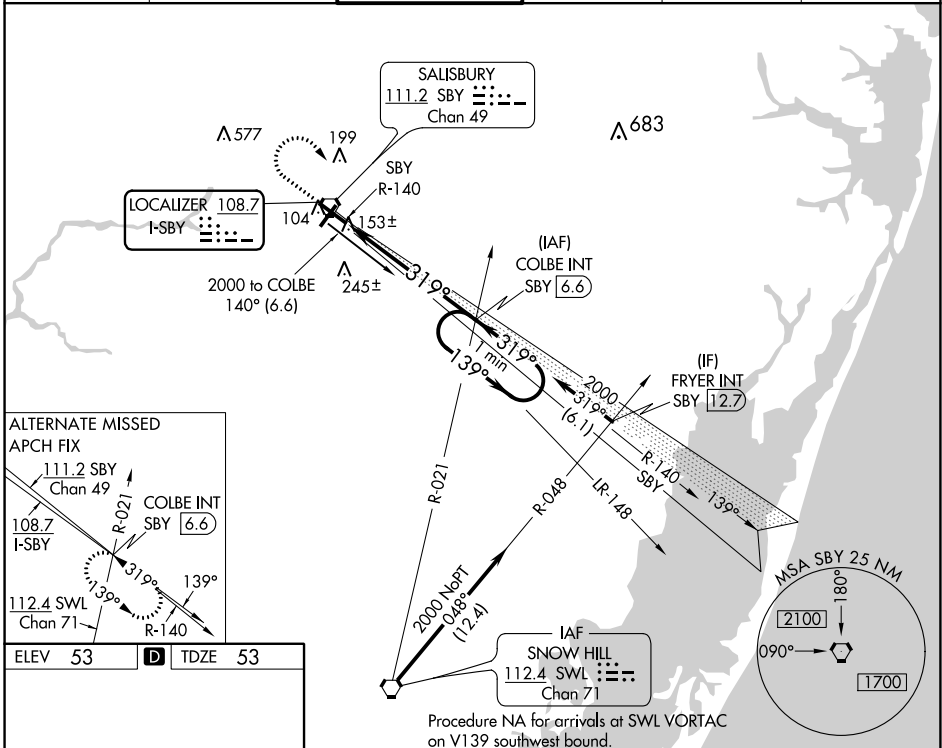


LOC I-SBY 108.7	APP CRS 319°	Rwy Idg TDZE Apt Elev	6400 53 53
---------------------------	------------------------	-----------------------------	---------------------------------------

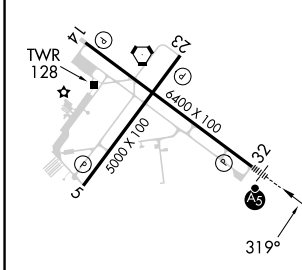
ILS or LOC RWY 32
SALISBURY-OCEAN CITY WICOMICO RGNL (SBY)

<p>▼ When local altimeter setting not received, use Georgetown altimeter setting: increase DA to 305 feet; increase all MDA 60 feet and S-LOC 32 Cat C and Circling Cat D visibility ¼ SM.</p>	<p>MALS R AS</p>	<p>MISSED APPROACH: Climb to 700 then climbing right turn to 2000 on heading 170° and on SBY VORTAC R-140 to COLBE INT/SBY VORTAC 6.6 DME and hold.</p>
--	----------------------	---

ASOS 118.325	PATUXENT APP CON★ 127.95 314.0	SALISBURY TOWER★ 119.425 (CTAF) 1	GND CON 123.775	CLNL DEL★ 123.775	UNICOM 122.95
------------------------	--	--	---------------------------	-----------------------------	-------------------------



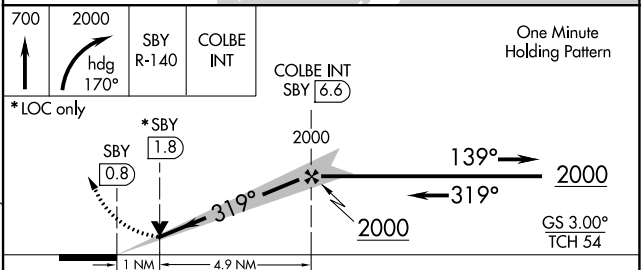
ELEV 53	D	TDZE 53
---------	----------	---------



REIL Rwy 5, 14 and 23 **1**
MIRL Rwy 5-23 **1**
HIRL Rwy 14-32 **1**

FAF to MAP 5.9 NM

Knots	60	90	120	150	180
Min:Sec	5:54	3:56	2:57	2:22	1:58



CATEGORY	A	B	C	D
S-ILS 32	253-½ 200 (200-½)			
S-LOC 32	420-½ 367 (400-½) 420-¾ 367 (400-¾)			
CIRCLING	480-1 427 (500-1)	520-1 467 (500-1)	560-1½ 507 (600-1½)	700-2 647 (700-2)

NE-3, 22 FEB 2024 to 21 MAR 2024

NE-3, 22 FEB 2024 to 21 MAR 2024

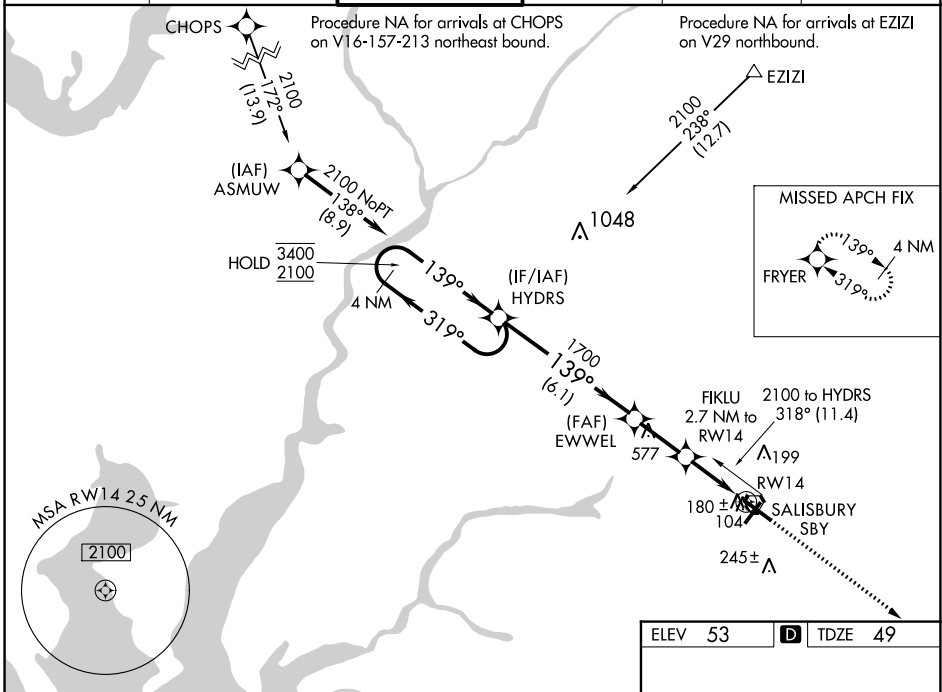
WAAS CH 56320 W14A	APP CRS 139°	Rwy Idg TDZE Apt Elev	6400 49 53
--	------------------------	-----------------------------	---------------------------------------

RNAV (GPS) RWY 14

SALISBURY-OCEAN CITY WICOMICO RGNL (SBY)

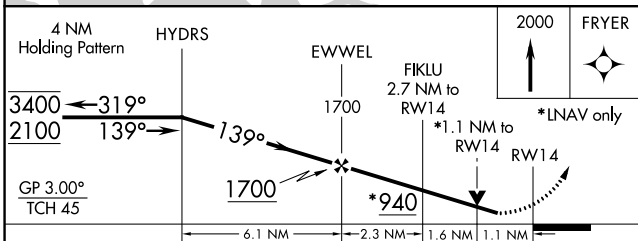
RNP APCH.					MISSED APPROACH: Climb to 2000 direct FRYER and hold.	
<p>T Rwy 14 helicopter visibility reduction below 3/4 SM NA. A For uncompensated Baro-VNAV systems, LNAV/VNAV NA below -16° C or above 54° C.</p>						

ASOS 118.325	PATUXENT APP CON ★ 127.95 314.0	SALISBURY TOWER ★ 119.425 (CTAF) 0	GND CON 123.775	CLNL DEL ★ 123.775	UNICOM 122.95
------------------------	---	---	---------------------------	------------------------------	-------------------------



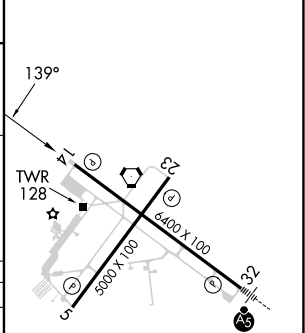
NE-3, 22 FEB 2024 to 21 MAR 2024

NE-3, 22 FEB 2024 to 21 MAR 2024



ELEV 53	D TDZE 49
---------	------------------

CATEGORY	A	B	C	D
LPV DA	363-1 314 (400-1)			
LNAV/ VNAV DA	453-1½ 404 (400-1½)			
LNAV MDA	440-1 391 (400-1)	440-1⅛ 391 (400-1⅛)		440-1¼ 391 (400-1¼)
C CIRCLING	480-1 427 (500-1)	520-1 467 (500-1)	560-1½ 507 (600-1½)	700-2 647 (700-2)



REIL Rwy 5, 14 and 23 **0**
 MRL Rwy 5-23 **0**
 HIRL Rwy 14-32 **0**

WAAS CH 78018 W23A	APP CRS 229°	Rwy Idg 5000 TDZE 49 Apt Elev 53
--	------------------------	---

RNAV (GPS) RWY 23

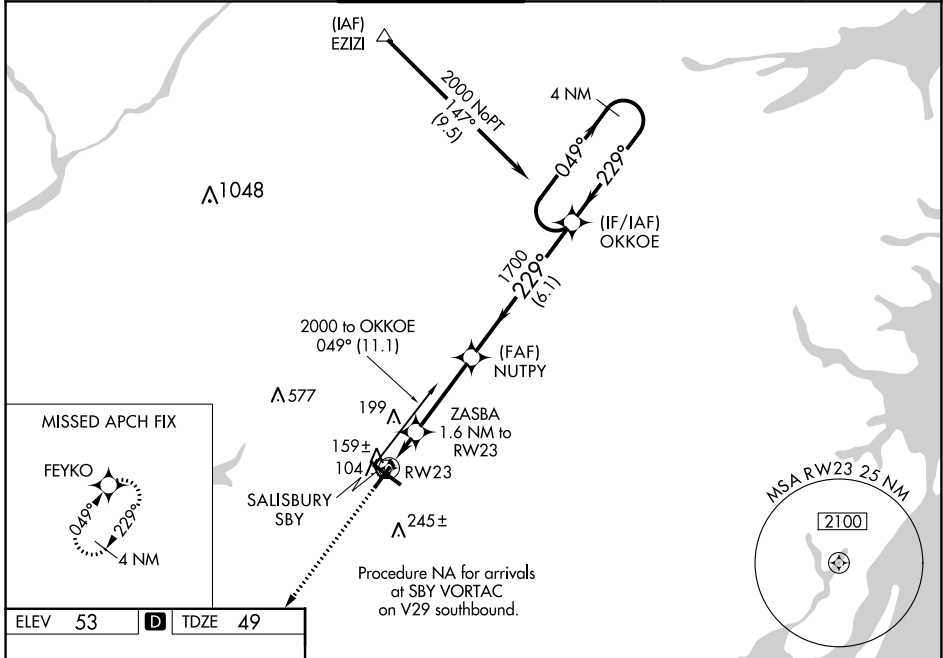
SALISBURY-OCEAN CITY WICOMICO RGNL (SBY)

RNP APCH

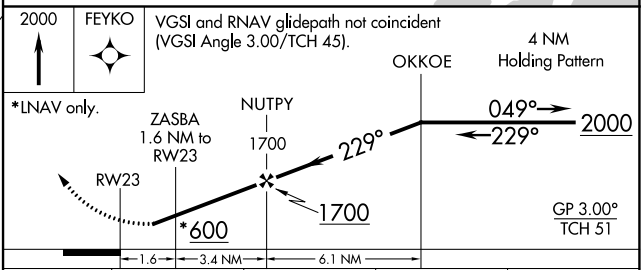
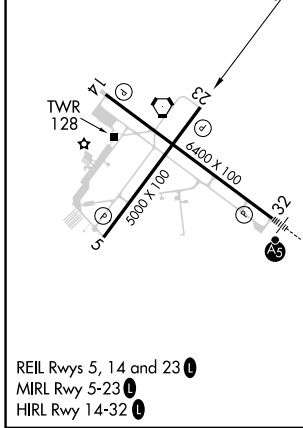
Baro-VNAV NA when using Georgetown altimeter setting. For uncompensated Baro-VNAV systems, LNAV/VNAV NA below -15°C or above 43°C. Rwy 23 helicopter visibility reduction below ¾ SM NA.
 When local altimeter setting not received use Georgetown altimeter setting: increase LPV DA to 426 feet and all Cats visibility ¼ SM; increase LNAV/VNAV DA to 503 feet; increase all MDA 60 feet and LNAV Cat C/D and Circling Cat D visibility ¼ SM.

MISSED APPROACH:
Climb to 2000 direct FEYKO and hold.

ASOS 118.325	PATUXENT APP CON ★ 127.95 314.0	SALISBURY TOWER ★ 119.425 (CTAF) 0	GND CON 123.775	CLNL DEL ★ 123.775	UNICOM 122.95
------------------------	---	---	---------------------------	------------------------------	-------------------------



ELEV 53	D	TDZE 49
---------	----------	---------



CATEGORY	A	B	C	D
LPV DA		374-1	325 (400-1)	
LNAV/VNAV DA		451-1½	402 (400-1½)	
LNAV MDA		420-1	371 (400-1)	420-1¼ 371 (400-1¼)
CIRCLING	480-1 427 (500-1)	520-1 467 (500-1)	560-1½ 507 (600-1½)	700-2 647 (700-2)

SALISBURY, MARYLAND
Amdt 1B 25MAR21

SALISBURY-OCEAN CITY WICOMICO RGNL (SBY)
38°20'N-75°31'W
RNAV (GPS) RWY 23

NE-3, 22 FEB 2024 to 21 MAR 2024

NE-3, 22 FEB 2024 to 21 MAR 2024

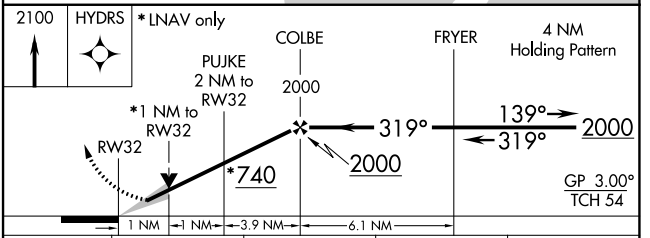
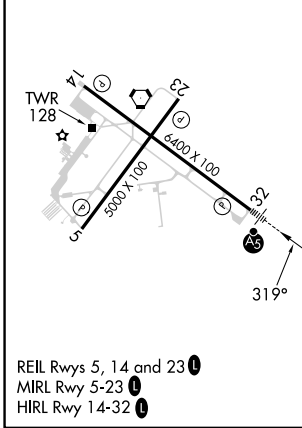
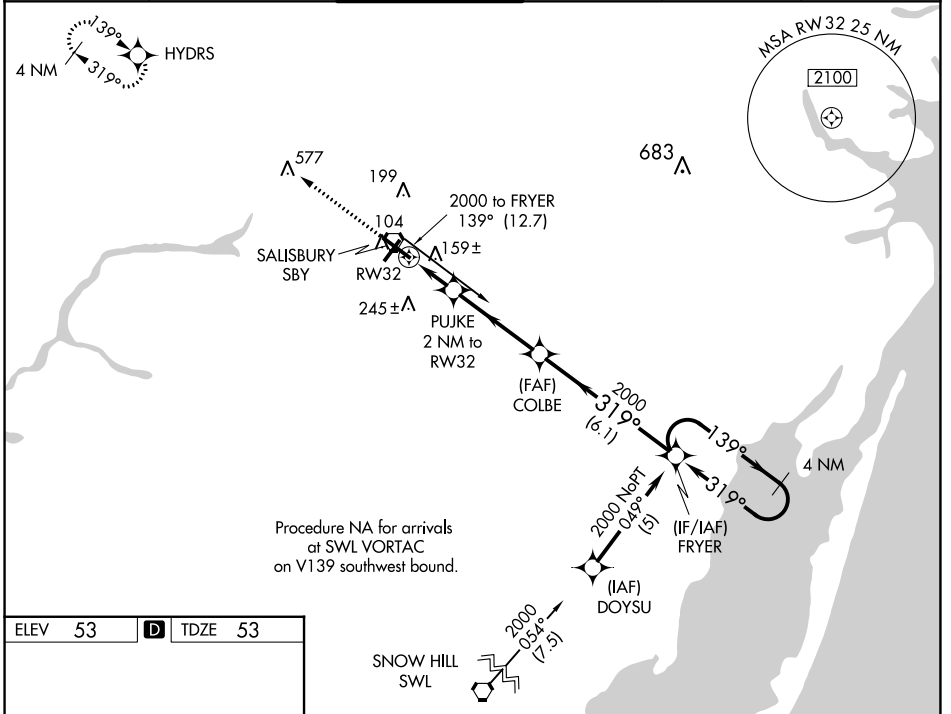
WAAS CH 48912 W32A	APP CRS 319°	Rwy Idg TDZE Apt Elev	6400 53 53
--	------------------------	-----------------------------	---------------------------------------

RNAV (GPS) RWY 32

SALISBURY-OCEAN CITY WICOMICO RGNL (SBY)

RNP APCH	MALSRL	MISSED APPROACH: Climb to 2100 direct HYDRS and hold.
<p>▼ For uncompensated Baro-VNAV systems, LNAV/VNAV NA below -15°C or above 49°C. When local altimeter setting not received use Georgetown altimeter setting: increase LPV DA to 305 feet; increase LNAV/VNAV DA to 510; increase all MDA 60 feet and LNAV Cat C and Circling Cat D visibility ¼ SM. For inoperative MALSRL, increase LNAV Cat D visibility to 1¼ SM. VDP and Baro-VNAV NA when using Georgetown altimeter setting.</p>		

ASOS 118.325	PATUXENT APP CON ★ 127.95 314.0	SALISBURY TOWER ★ 119.425 (CTAF) 0	GND CON 123.775	CLNL DEL ★ 123.775	UNICOM 122.95
------------------------	---	---	---------------------------	------------------------------	-------------------------



CATEGORY	A	B	C	D
LPV DA		253-½	200 (200-½)	
LNAV/VNAV DA		458-1	405 (500-1)	
LNAV MDA		420-½	367 (400-½)	420-1 367 (400-1)
CIRCLING	480-1 427 (500-1)	520-1 467 (500-1)	560-1½ 507 (600-1½)	700-2 647 (700-2)

NE-3, 22 FEB 2024 to 21 MAR 2024

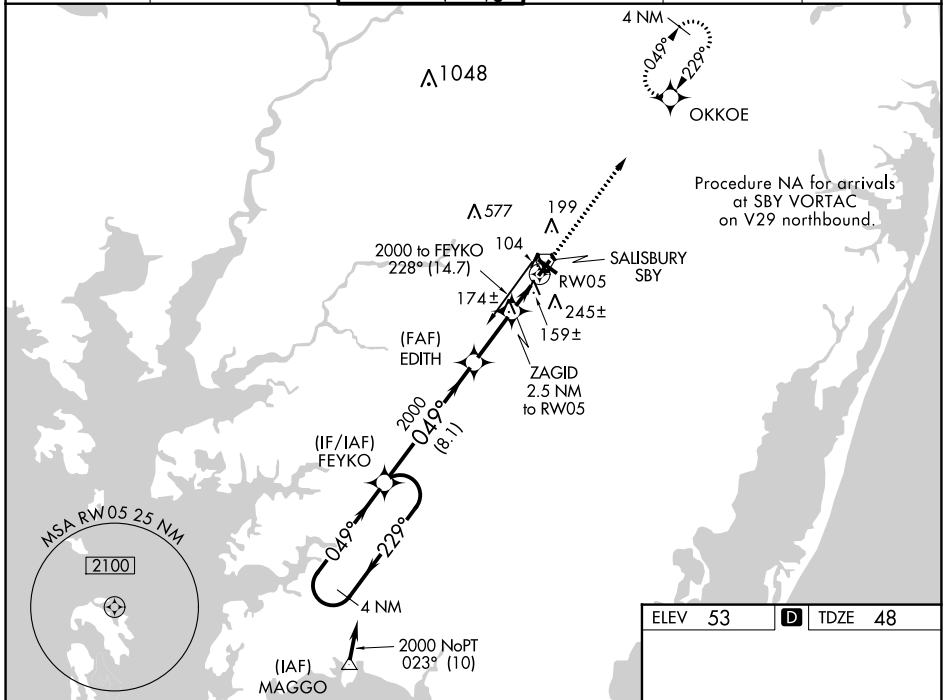
NE-3, 22 FEB 2024 to 21 MAR 2024

WAAS CH 62820 W05A	APP CRS 049°	Rwy Idg TDZE Apt Elev	5000 48 53
--	------------------------	-----------------------------	---------------------------------------

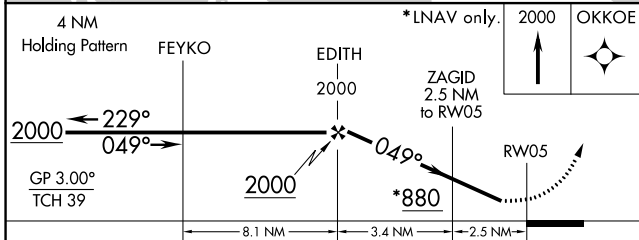
RNAV (GPS) RWY 5

SALISBURY-OCEAN CITY WICOMICO RGNL (SBY)

RNP APCH.		<p>Baro-VNAV NA when using Georgetown altimeter setting. For uncompensated Baro-VNAV systems, LNAV/VNAV NA below -15°C or above 49°C. Visibility reduction by helicopters NA. When local altimeter setting not received use Georgetown altimeter setting: increase LPV DA to 394 feet and increase all Cats visibility ¼ SM; increase LNAV/VNAV DA to 512 feet and all Cats visibility ¼ SM; increase all MDA 60 feet and LNAV Cat C/D and Circling Cat D visibility ¼ SM.</p>		<p>MISSED APPROACH: Climb to 2000 direct OKKOE and hold.</p>	
ASOS 118.325	PATUXENT APP CON ★ 127.95 314.0	SALISBURY TOWER ★ 119.425 (CTAF) 0	GND CON 123.775	CLNL DEL ★ 123.775	UNICOM 122.95



NE-3, 22 FEB 2024 to 21 MAR 2024



CATEGORY	A	B	C	D
LPV DA		342-1	294 (300-1)	
LNAV/VNAV DA		460-1½	412 (500-1½)	
LNAV MDA		440-1	392 (400-1)	440-1¼ 392 (400-1¼)
CIRCLING	480-1 427 (500-1)	520-1 467 (500-1)	560-1½ 507 (600-1½)	700-2 647 (700-2)

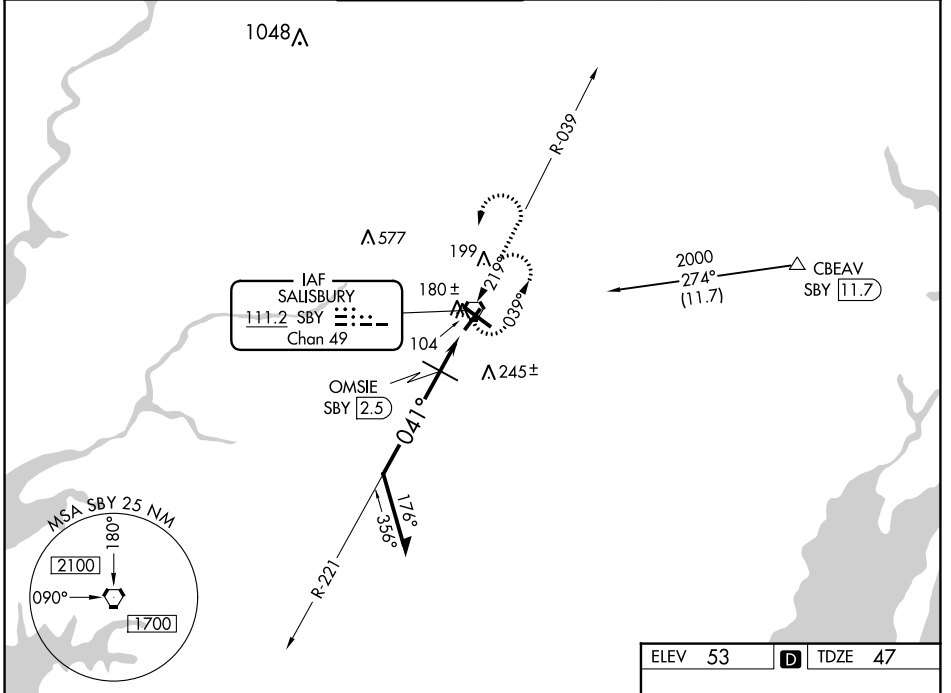
VORTAC SBY 111.2 Chan 49	APP CRS 041°	Rwy Idg TDZE 47 Apt Elev 53
--	------------------------	---

VOR RWY 5

SALISBURY-OCEAN CITY WICOMICO RGNL (SBY)

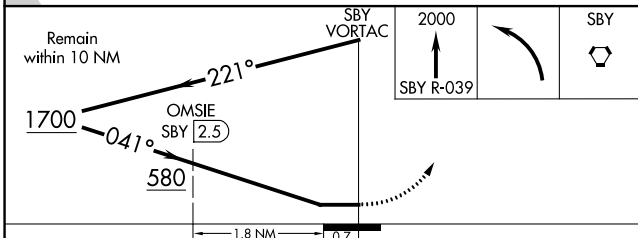
⚠ Rwy 5 helicopter visibility reduction below $\frac{3}{4}$ SM NA. MISSED APPROACH: Climb to 2000 on SBY VORTAC R-039 then left turn direct SBY VORTAC and hold.

ASOS 118.325	PATUXENT APP CON ★ 127.95 314.0	SALISBURY TOWER ★ 119.425 (CTAF) 0	GND CON 123.775	CLNL DEL ★ 123.775	UNICOM 122.95
------------------------	---	---	---------------------------	------------------------------	-------------------------



NE-3, 22 FEB 2024 to 21 MAR 2024

NE-3, 22 FEB 2024 to 21 MAR 2024



ELEV 53	D TDZE 47
---------	------------------

REIL Rws 5, 14 and 23
MIRL Rwy 5-23
HIRL Rwy 14-32

CATEGORY	A	B	C	D
S-5	580-1	533 (600-1)	580-1½ 533 (600-1½)	580-1¾ 533 (600-1¾)
C CIRCLING	580-1	527 (600-1)	580-1½ 527 (600-1½)	700-2 647 (700-2)
OMSIE FIX MINIMUMS				
S-5	440-1	393 (400-1)	440-1½ 393 (400-1½)	440-1¾ 393 (400-1¾)
C CIRCLING	480-1 427 (500-1)	520-1 467 (500-1)	560-1½ 507 (600-1½)	700-2 647 (700-2)