

WAAS CH <b>65936</b> <b>W18A</b>	APP CRS <b>183°</b>	Rwy Idg TDZE Apt Elev	<b>4359</b> <b>539</b> <b>539</b>
--	------------------------	-----------------------------	---

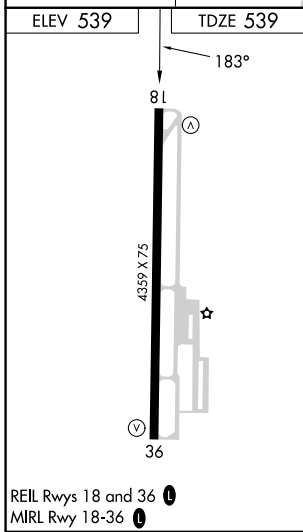
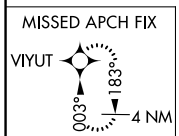
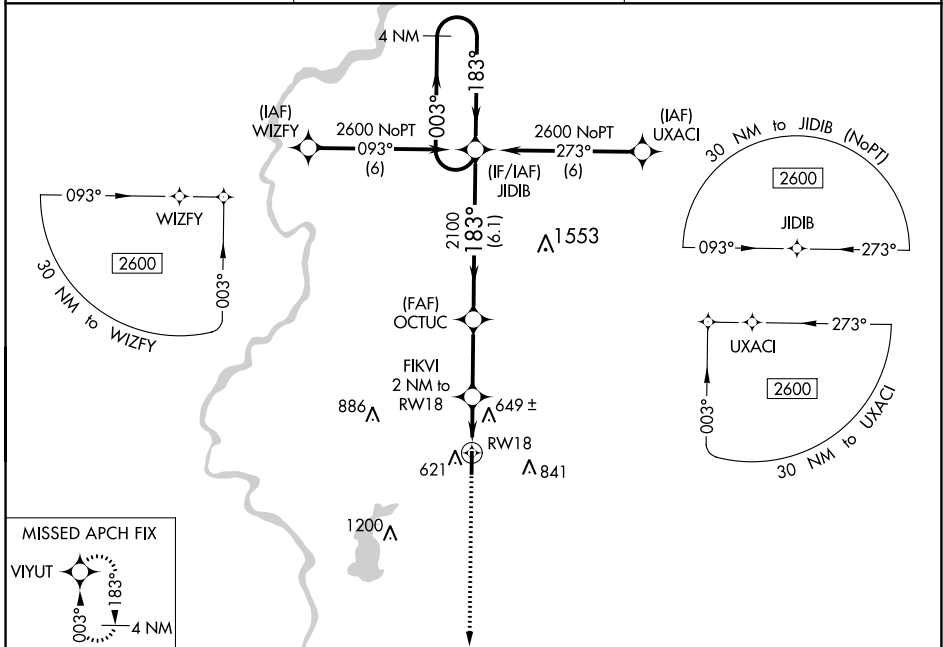
# RNAV (GPS) RWY 18

SULLIVAN COUNTY (SIV)

**▼** Baro-VNAV NA. DME/DME RNP-0.3 NA. When Robinson altimeter setting is not received, use Terre Haute Intl-Hulman Field altimeter setting and increase all DA/MDA 20 feet.

**▲** NA MISSED APPROACH: Climb to 2500 direct VIYUT and hold.

RSV AWOS-3 <b>120.5</b>	HULMAN APP CON <b>119.25 339.8</b>	UNICOM <b>122.8 (CTAF) 0</b>
----------------------------	---------------------------------------	---------------------------------



ELEV 539	TDZE 539	RED HILLS MOA	
2500	VIYUT	VGS1 and descent angles not coincident (VGS1 Angle 3.00/TCH 21).	
*LNAV only		FIKVI 2 NM to RWY 18	JIDIB 4 NM Holding Pattern
RWY 18		OCTUC 2100	GP 3.00° TCH 40
1200*		2100	
2 NM		2.8 NM	6.1 NM
CATEGORY	A	B	C
LPV DA	826-1	287 (300-1)	NA
LNAV/VNAV DA	826-1	287 (300-1)	NA
LNAV MDA	940-1	401 (500-1)	NA
CIRCLING	1000-1	1080-1	NA
	461 (500-1)	541 (600-1)	

SULLIVAN, INDIANA  
Amdt 1 13NOV14

39°07'N-87°27'W

# RNAV (GPS) RWY 18

EC-2, 22 FEB 2024 to 21 MAR 2024

EC-2, 22 FEB 2024 to 21 MAR 2024

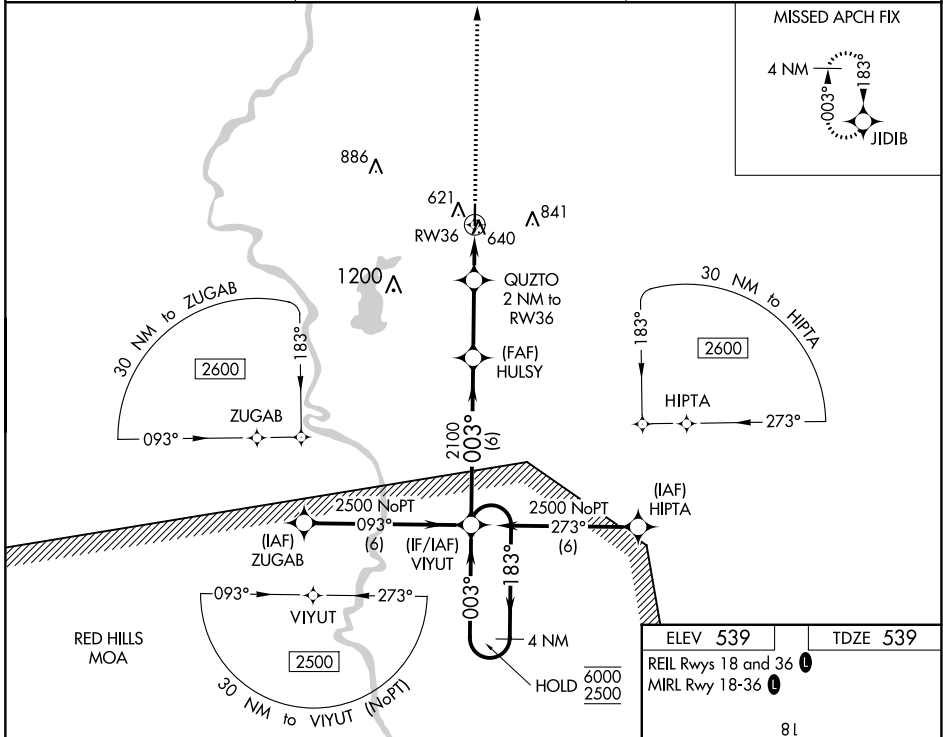
WAAS CH <b>82136</b> <b>W36A</b>	APP CRS <b>003°</b>	Rwy Idg <b>4359</b> TDZE <b>539</b> Apt Elev <b>539</b>
--	------------------------	---

# RNAV (GPS) RWY 36

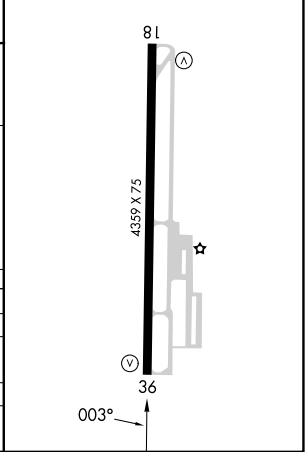
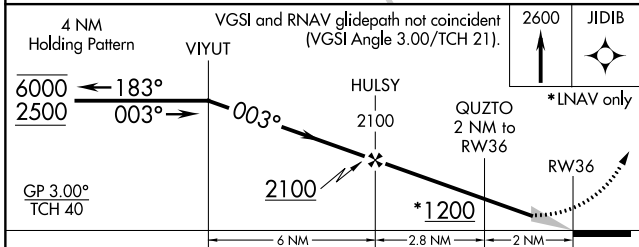
SULLIVAN COUNTY (SIV)

RNP APCH.	Baro-VNAV NA. Use Robinson altimeter setting; when not received, use Terre Haute altimeter setting and increase LPV DA to 876, increase LNAV/VNAV DA to 889, and increase all MDA 20 feet.	MISSED APPROACH: Climb to 2600 direct JIDIB and hold.
-----------	--	--

RSV AWOS-3 <b>120.5</b>	HULMAN APP CON <b>119.25 339.8</b>	UNICOM <b>122.8</b> (CTAF) <b>0</b>
----------------------------	---------------------------------------	--



ELEV 539	TDZE 539
REIL Rwy 18 and 36 <b>0</b>	
MIRL Rwy 18-36 <b>0</b>	



CATEGORY	A	B	C	D
LPV DA	856-1 1/8	317 (400-1 1/8)		NA
LNAV/VNAV DA	869-1	330 (400-1)		NA
LNAV MDA	980-1	441 (500-1)		NA
CIRCLING	1000-1 461 (500-1)	1080-1 541 (600-1)		NA

EC-2, 22 FEB 2024 to 21 MAR 2024

EC-2, 22 FEB 2024 to 21 MAR 2024