

EMMLN ONE ARRIVAL
(APLES, EMMLN1) 03 NOV 22

(APLES, EMMLN1) 23334
EMMLN ONE ARRIVAL

SOCAL APP CON
127.0 318.2
FUL ATIS
125.05
HHR ATIS
118.4
KSLI ATIS*
118.875 379.975
LGB ATIS
127.75
SNA D-ATIS
126.0

PALMDALE
115.55 PMD
Chan 102(Y)

EDWARDS
116.4 EDW
Chan 111

VICTORVILLE
109.05 VCV
Chan 27(Y)

DAGGETT
113.2 DAG
Chan 79

BASAL
10000

HECTOR
112.7 HEC
Chan 74

NOTE: RADAR required.
NOTE: Turboprop and prop aircraft only.

POMONA
110.4 POM
Chan 41

APLES
10000

EMMLN

CAPTZ
10000

Ldg KLGB/KFUL/KSLI/KSNA

SEAL BEACH
115.7 SLI
Chan 104

DOWDD
6000

RNDAL
6000

Ldg KHHR

PARADISE
112.2 PDZ
Chan 59



JACK NORTHROP FIELD/HAWTHORNE MUNI

LONG BEACH (DAUGHERTY FLD)

FULLERTON MUNI

LOS ALAMITOS AAF

AHEIM
6000

POXKU
6000

JOHN WAYNE/
ORANGE COUNTY

(CONTINUED ON FOLLOWING PAGE)

NOTE: Chart not to scale

AL-236 (FAA)

LONG BEACH, CALIFORNIA

LONG BEACH, CALIFORNIA

ARRIVAL ROUTE DESCRIPTION

DAGGETT TRANSITION (DAG.EMMLN1): From over DAG VORTAC on DAG R-214 to APLES. Thence. . . .

HECTOR TRANSITION (HEC.EMMLN1): From over HEC VORTAC on HEC R-232 to APLES. Thence. . . .

LANDING KLGB/KFUL/KSLI: From over APLES on PARADISE VORTAC (PDZ) R-012 to cross CAPTZ at 10000, then on PDZ R-012 to cross RRIZE at 8100, then on PDZ R-012 to cross PDZ VORTAC at 6000, then on PDZ R-270 to cross DOWDD at 6000, then on POMONA VORTAC (POM) R-187 to cross AHEIM at 6000, then on SEAL BEACH VORTAC (SLI) R-058 to cross SLI VORTAC at 6000.

LANDING KLGB: From over SLI VORTAC, fly heading 210°, expect RADAR vectors to final approach course.

LANDING KFUL: From over SLI VORTAC, expect VOR-A approach.

LANDING KSLI: From over SLI VORTAC, expect VOR or TACAN RWY 22L approach or RADAR vectors to final approach course.

LANDING KHHR: From over APLES on PARADISE VORTAC (PDZ) R-012 to cross CAPTZ at 10000, then on PDZ R-012 to cross RRIZE at 8100, then on PDZ R-012 to cross PDZ VORTAC at 6000, then on PDZ R-270 to cross RNDAL at 6000, then fly heading 250°. Expect RADAR vectors to final approach course.

LANDING KSNA: From over APLES on PARADISE VORTAC (PDZ) R-012 to cross CAPTZ at 10000, then on PDZ R-012 to cross RRIZE at 8100, then on PDZ R-012 to cross PDZ VORTAC at 6000, then on PDZ R-270 to cross RNDAL at 6000, then on POM R-164 to cross POXKU at 6000, then on SLI R-058 to cross SLI VORTAC at 6000. Expect RADAR vectors to final approach course.

SW-3, 22 FEB 2024 to 21 MAR 2024

SW-3, 22 FEB 2024 to 21 MAR 2024

ARRIVAL ROUTE DESCRIPTION

HECTOR TRANSITION (HEC.KAYOH8): From over HEC VORTAC on HEC R-211 to BULGY then on R-211 and PDZ R-030 to DAWNA, then on HDF R-353 to HDF VOR, then on HDF R-257 to FRETS, then on HDF R-257 and SLI R-075 to KAYOH. Thence. . . .

PALM SPRINGS TRANSITION (PSP.KAYOH8): From over PSP VORTAC on PSP R-260 to BANDS, then on HDF R-054 to HDF VOR, then on HDF R-257 to FRETS, then on HDF R-257 and SLI R-075 to KAYOH. Thence. . . .

. . . .from over KAYOH on SLI R-075 to JOGIT, then on SLI R-075 to SLI VORTAC, expect RADAR vectors to final approach course.

- SOCAL APP CON
 133.85 346.35
 FUL ATIS
 125.05
 LGB ATIS
 127.75
 SNA D-ATIS
 126.0
 TOA ATIS
 125.6

POMONA
 110.4 POM
 Chan 41

PARADISE
 112.2 PDZ
 Chan 59

DAGGETT
 113.2 DAG
 Chan 79

HECTOR
 112.7 HEC
 Chan 74

LONG BEACH
 (DAUGHERTY FLD)

SEAL BEACH
 115.7 SLI
 Chan 104

EL TORO
 117.2(T) ELB
 Chan 119

OCEANSIDE
 115.3 OCN
 Chan 100

PALM SPRINGS
 115.5 PSP
 Chan 102

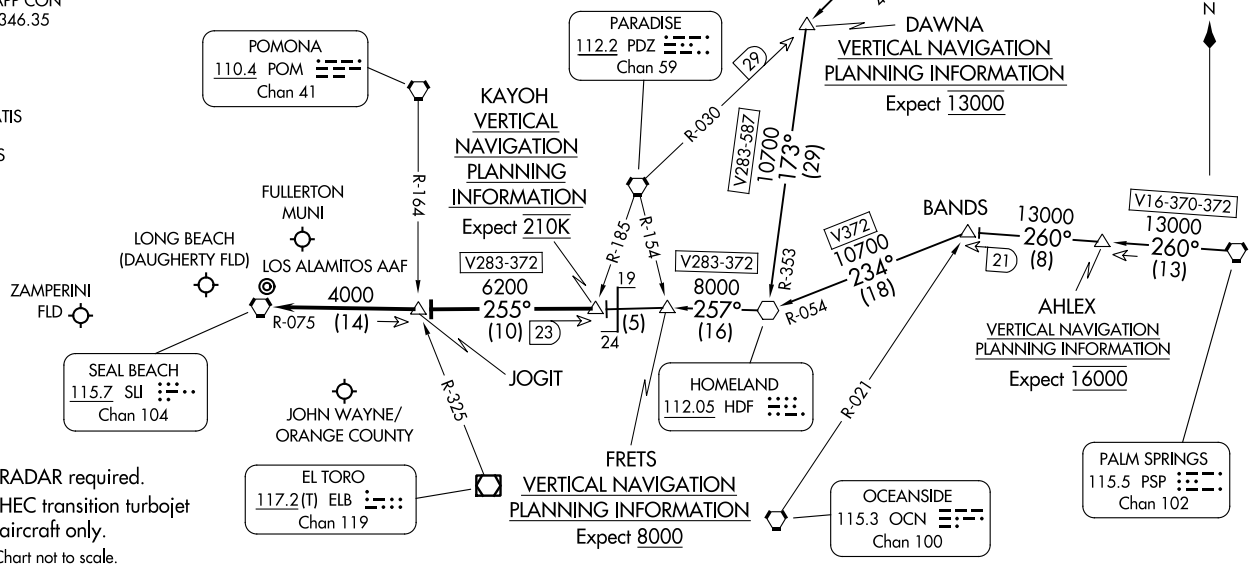
KAYOH
 VERTICAL
 NAVIGATION
 PLANNING
 INFORMATION
 Expect 210K

FRETS
 VERTICAL
 NAVIGATION
 PLANNING
 INFORMATION
 Expect 8000

BULGY
 VERTICAL NAVIGATION
 PLANNING INFORMATION
 Expect FL240

DAWNA
 VERTICAL NAVIGATION
 PLANNING INFORMATION
 Expect 13000

AHLEX
 VERTICAL NAVIGATION
 PLANNING INFORMATION
 Expect 16000



NOTE: RADAR required.
 NOTE: HEC transition turbojet aircraft only.
 NOTE: Chart not to scale.

KAYOH EIGHT ARRIVAL
 (KAYOH.KAYOH8) 24MAR22

(KAYOH.KAYOH8) 23334
 KAYOH EIGHT ARRIVAL

AL-236 (FAA)

LONG BEACH, CALIFORNIA

LONG BEACH, CALIFORNIA