

WAAS CH 69220 W13A	APP CRS 133°	Rwy Idg TDZE Apt Elev	2623 836 836
----------------------------------------	------------------------	-----------------------------	-----------------------------------------

RNAV (GPS) RWY 13

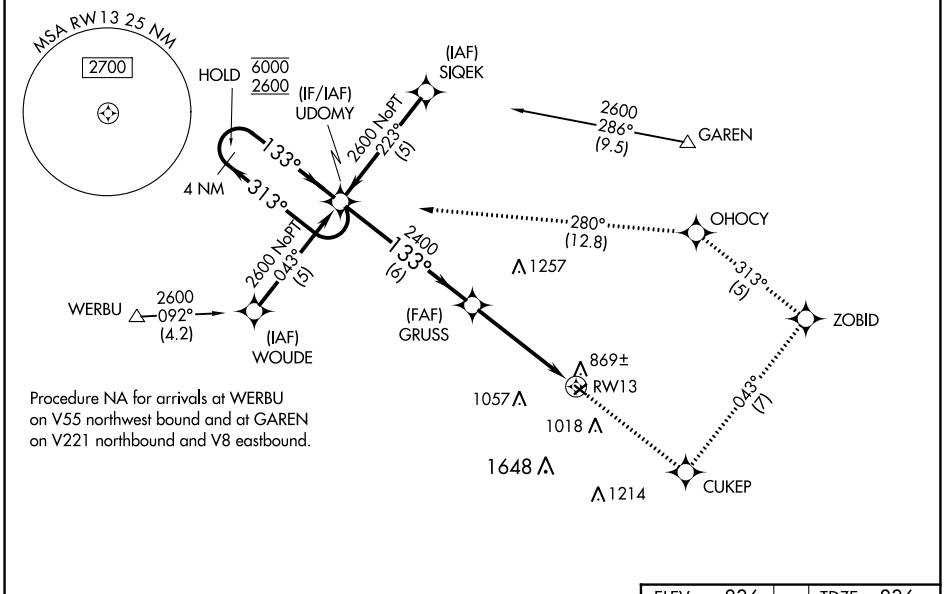
SMITH FLD (SMD)

RNP APCH.

Procedure NA at night. Rwy 13 helicopter visibility reduction below 1 SM NA.
NA For uncompensated Baro-VNAV systems, LNAV/VNAV NA below -1.6°C or above 5.4°C. When local altimeter setting not received, use Fort Wayne Intl altimeter setting:
-22°C increase LPV DA to 1162 feet; LNAV/VNAV DA to 1435 feet; increase all MDA 40 feet and LNAV Cat C visibility ¼ SM. Baro-VNAV NA when using Fort Wayne Intl altimeter setting.

MISSED APPROACH: Climb to 2600 direct CUKEP and on track 043° to ZOBID and on track 313° to OHOCY and on track 280° to UDOMY and hold.

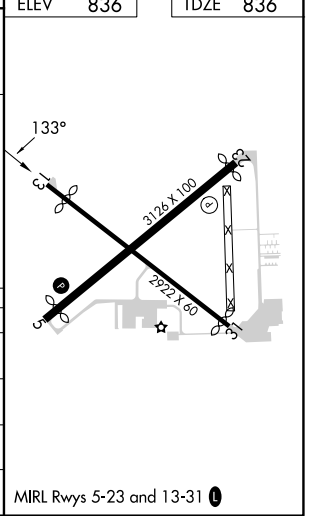
AWOS-3 124.55	FORT WAYNE APP CON 127.2 284.6	UNICOM 122.8 (CTAF)
-------------------------	------------------------------------------	-------------------------------



EC-2, 22 FEB 2024 to 21 MAR 2024

EC-2, 22 FEB 2024 to 21 MAR 2024

	ELEV 836	TDZE 836		
	2600 CUKEP	ZOBID	OHOCY	UDOMY
	↑	tr 043°	tr 313°	tr 280°
4 NM Holding Pattern	UDOMY			
6000 ← 313°	2600 → 133°	GRUSS 2400	RW13	
GP 3.00° TCH 40		6 NM	4.7 NM	
CATEGORY	A	B	C	D
LPV DA	1135-1	299 (300-1)		NA
LNAV/VNAV DA	1408-2	572 (600-2)		NA
LNAV MDA	1340-1	504 (600-1)	1340-1½ 504 (600-1½)	NA
CIRCLING	1400-1	564 (600-1)	1940-3 1104 (1200-3)	NA



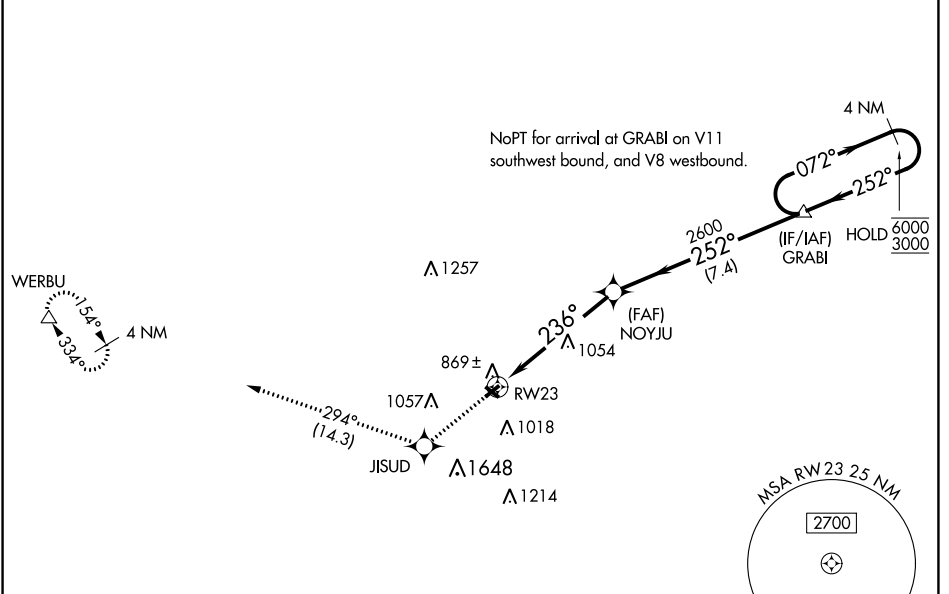
WAAS CH 65738 W23A	APP CRS 236°	Rwy Idg TDZE 834 Apt Elev 836	3035 834 836
----------------------------------------	------------------------	---------------------------------------------------	-----------------------------------------

RNAV (GPS) RWY 23

SMITH FLD (SMD)

RNP APCH.	<p>Procedure NA at night. Rwy 23 helicopter visibility reduction below 1 SM NA. When local altimeter setting not received, use Fort Wayne Intl altimeter setting and increase all MDA 40 feet and LP and LNAV Cat C visibility 1/8 SM.</p>	<p>MISSED APPROACH: Climb to 2700 direct JISUD and on track 294° to WERBU and hold.</p>
-----------	--------------------------------------------------------------------------------------------------------------------------------------------------------------------------------------------------------------------------------------------	-----------------------------------------------------------------------------------------

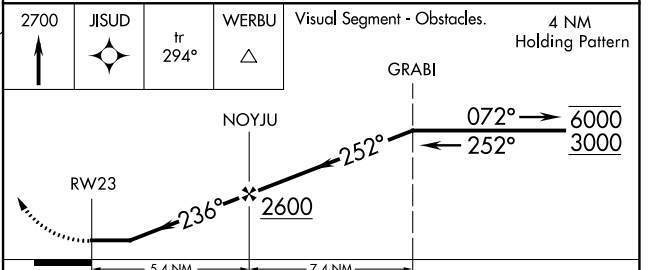
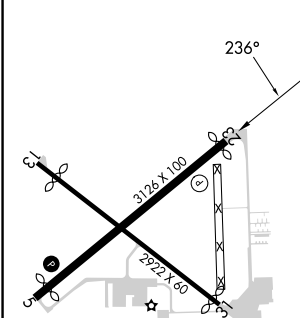
AWOS-3 124.55	FORT WAYNE APP CON 127.2 284.6	UNICOM 122.8 (CTAF)
-------------------------	------------------------------------------	-------------------------------



EC-2, 22 FEB 2024 to 21 MAR 2024

EC-2, 22 FEB 2024 to 21 MAR 2024

ELEV 836	TDZE 834
----------	----------



CATEGORY	A	B	C	D
LP MDA	1360-1	526 (600-1)	1360-1½ 526 (600-1½)	NA
LNAV MDA	1400-1	566 (600-1)	1400-1½ 566 (600-1½)	NA
C CIRCLING	1400-1	564 (600-1)	1940-3 1104 (1200-3)	NA

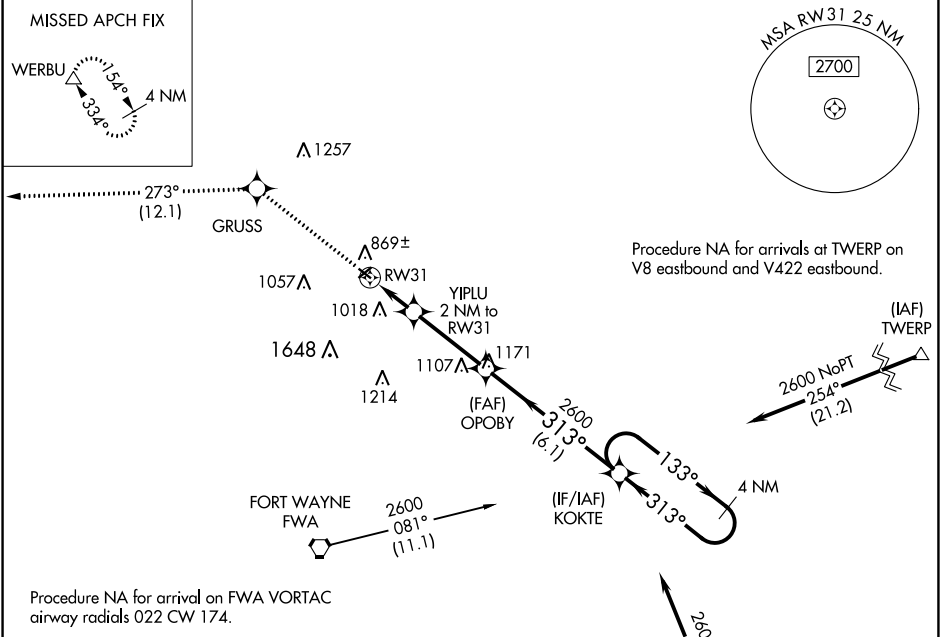
WAAS CH 77638 W31A	APP CRS 313°	Rwy Idg 2821 TDZE 836 Apt Elev 836
----------------------------------------	------------------------	---------------------------------------------------------------

RNAV (GPS) RWY 31

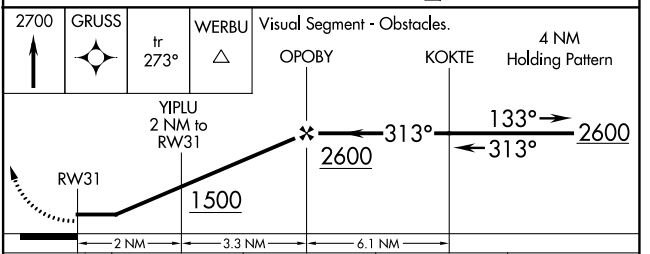
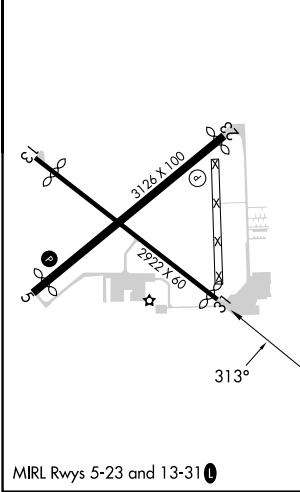
SMITH FLD (SMD)

⚠ Rwy 31 helicopter visibility reduction below 1 SM NA. DME/DME RNP-0.3 NA.
⚠ NA Procedure NA at night. When local altimeter setting not received, use Fort Wayne Intl altimeter setting and increase all MDA 40 feet, LP Cat C visibility 1/2 SM and LNAV Cat C visibility 1/2 SM.
⚠ MISSED APPROACH: Climb to 2700 direct GRUSS and on track 273° to WERBU and hold.

AWOS-3 124.55	FORT WAYNE APP CON 127.2 284.6	UNICOM 122.8 (CTAF) 0
-------------------------	------------------------------------------	---------------------------------



ELEV 836	TDZE 836
----------	----------



CATEGORY	A	B	C	D
LP MDA	1240-1	404 (500-1)	1240-1 1/8 404 (500-1 1/8)	NA
LNAV MDA	1260-1	424 (500-1)	1260-1 1/4 424 (500-1 1/4)	NA
C CIRCLING	1400-1	564 (600-1)	1940-3 1104 (1200-3)	NA

EC-2, 22 FEB 2024 to 21 MAR 2024

EC-2, 22 FEB 2024 to 21 MAR 2024

APP CRS	Rwy Idg	3035
056°	TDZE	834
	Apt Elev	836

RNAV (GPS) RWY 5

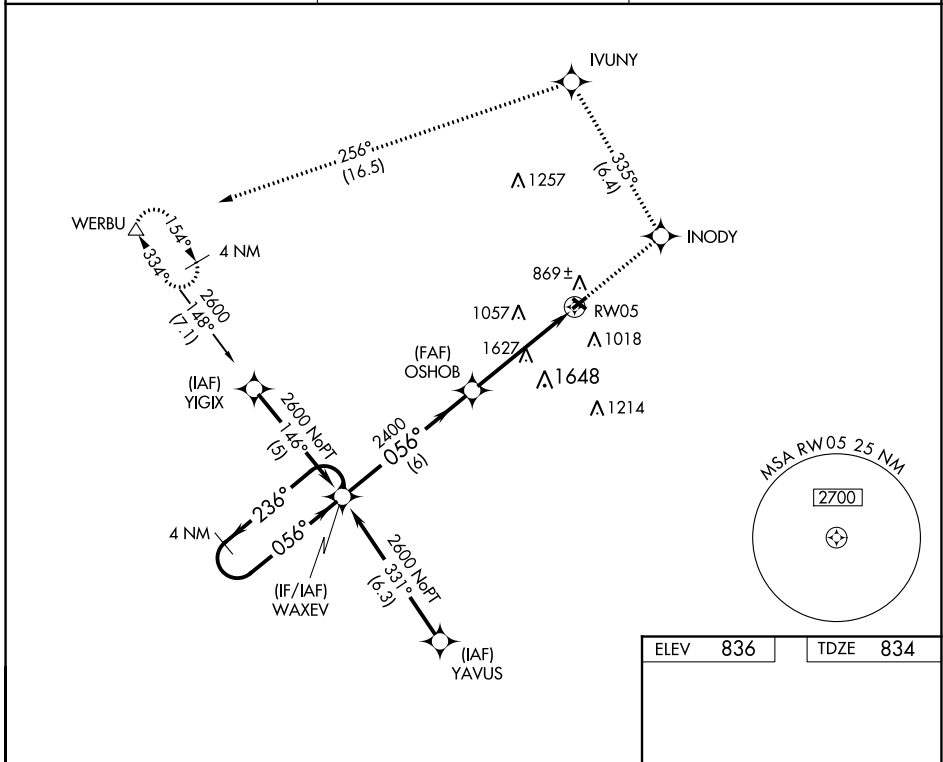
SMITH FLD (SMD)

RNP APCH.

When local altimeter setting not received, use Fort Wayne Intl altimeter setting and increase all MDA 40 feet. Procedure NA at night. Rwy 5 helicopter visibility reduction below 1 SM NA.

MISSED APPROACH: Climb to 2700 direct INODY and on track 335° to IVUNY and on track 256° to WERBU and hold.

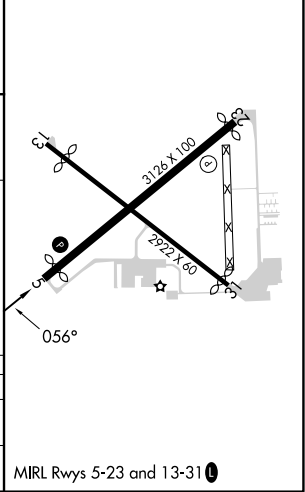
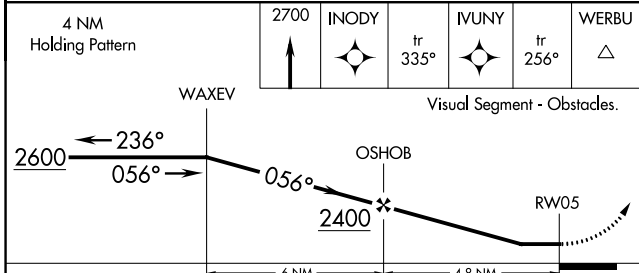
AWOS-3 124.55	FORT WAYNE APP CON 127.2 284.6	UNICOM 122.8 (CTAF) 0
-------------------------	------------------------------------------	---------------------------------



EC-2, 22 FEB 2024 to 21 MAR 2024

EC-2, 22 FEB 2024 to 21 MAR 2024

ELEV	836	TDZE	834
------	------------	------	------------



CATEGORY	A	B	C	D
LNVA MDA	1880-1¼ 1046 (1100-1¼)	1880-1½ 1046 (1100-1½)	1880-3 1046 (1100-3)	NA
CIRCLING	1880-1¼ 1044 (1100-1¼)	1880-1½ 1044 (1100-1½)	1940-3 1104 (1200-3)	NA

MIRL Rwy 5-23 and 13-31 0

VOR OLK 110.4	APP CRS 114°	Rwy ldg TDZE Apt Elev	2623 836 836
-------------------------	------------------------	-----------------------------	-----------------------------------------

VOR RWY 13

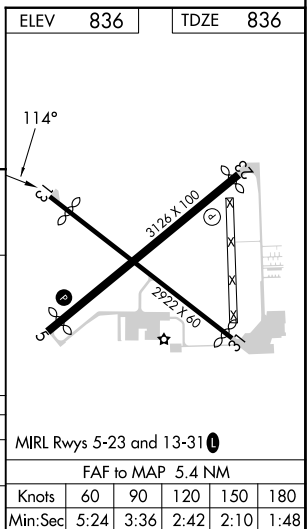
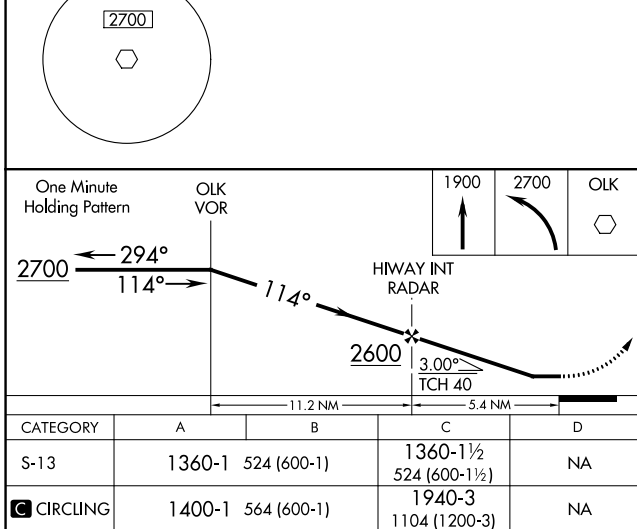
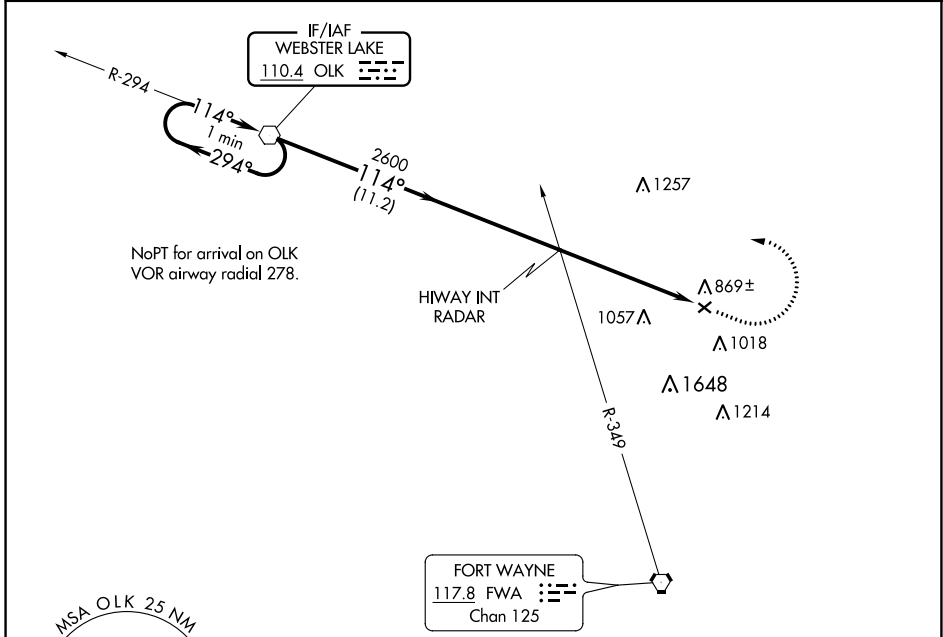
SMITH FLD (SMD)

⚠ NA
⚠ -22°C

Rwy 13 helicopter visibility reduction below 1 SM NA. Procedure NA at night. When local altimeter setting not received, use Fort Wayne Intl altimeter setting and increase all MDA 40 feet and S-13 Cat C visibility 1/8 SM.

MISSED APPROACH: Climb to 1900 then climbing left turn to 2700 direct OLK VOR and hold.

AWOS-3 124.55	FORT WAYNE APP CON 127.2 284.6	UNICOM 122.8 (CTAF) 0
-------------------------	------------------------------------------	---------------------------------



EC-2, 22 FEB 2024 to 21 MAR 2024

EC-2, 22 FEB 2024 to 21 MAR 2024