

APP CRS	Rwy Idg	4671
221°	TDZE	17
	Apt Elev	19

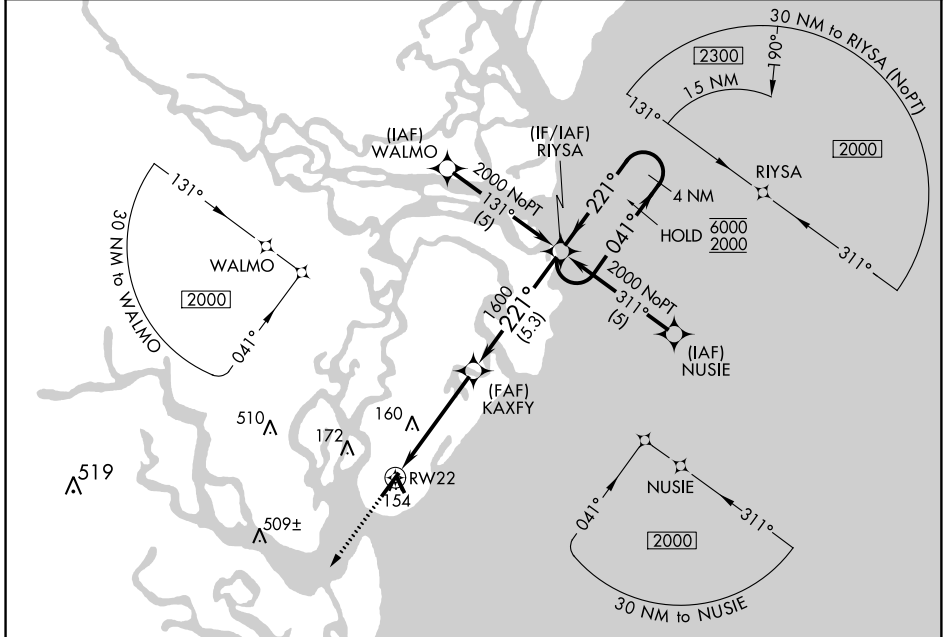
RNAV (GPS) RWY 22

ST SIMONS ISLAND (SSI)

RNP APCH.
 ▽ Straight-in Rwy 22 NA at night, Circling Rwy 16, 22, 34 NA at night. Rwy 22 helicopter visibility reduction below 1 SM NA.

MISSED APPROACH: Climb to 2000 direct VIXRY and hold.

ASOS 120.025	JACKSONVILLE CENTER 126.75 277.4	UNICOM 123.05 (CTAF) ①
------------------------	--------------------------------------------	----------------------------------

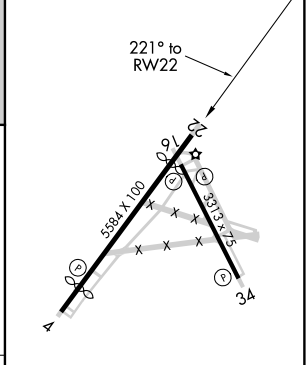


SE-4, 26 MAR 2020 to 23 APR 2020

SE-4, 26 MAR 2020 to 23 APR 2020



ELEV 19	D TDZE 17
---------	------------------



2000	VIXRY	VGSI and descent angles not coincident (VGSI Angle 4.00/TCH 54).
↑	✦	

CATEGORY	A	B	C	D
RNAV MDA	460-1	443 (500-1)	460-1½ 443 (500-1½)	460-1½ 443 (500-1½)
CIRCLING	460-1 441 (500-1)	480-1 461 (500-1)	480-1½ 461 (500-1½)	580-2 561 (600-2)

MIRL all Rwys ①

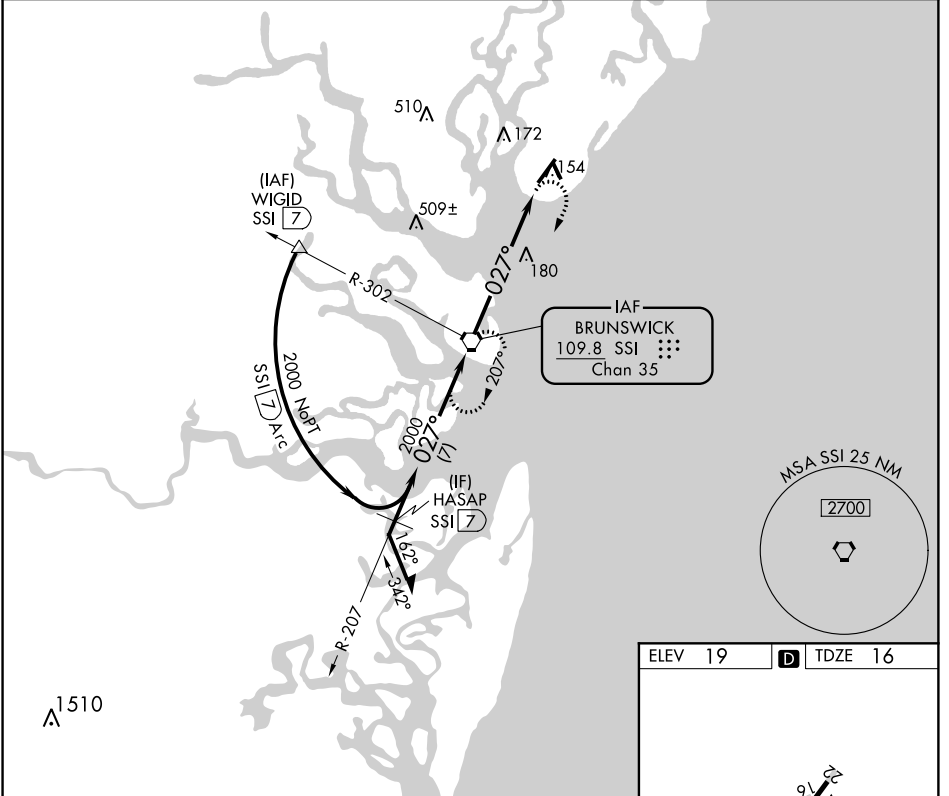
VORTAC SSI	APP CRS	Rwy Idg	4798
109.8	027°	TDZE	16
Chan 35		Apt Elev	19

VOR RWY 4
ST SIMONS ISLAND (SSI)

▼ Rwy 4 helicopter visibility reduction below 3/4 SM NA. Circling Rwy 16, 22, 34 NA at night.

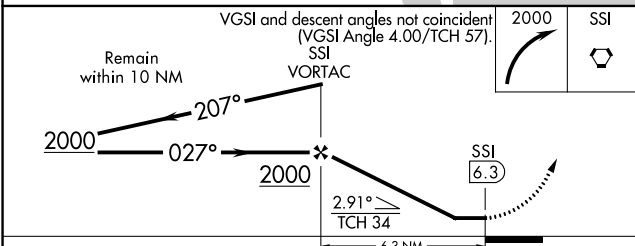
MISSED APPROACH: Climbing right turn to 2000 direct SSI VORTAC and hold.

ASOS 120.025	JACKSONVILLE CENTER 126.75 277.4	UNICOM 123.05 (CTAF) ①
------------------------	--------------------------------------------	----------------------------------



SE-4, 26 MAR 2020 to 23 APR 2020

SE-4, 26 MAR 2020 to 23 APR 2020



ELEV 19	D TDZE 16
---------	------------------

MIRA all Rwys ①

FAF to MAP 6.3 NM					
Knots	60	90	120	150	180
Min:Sec	6:18	4:12	3:09	2:31	2:06

CATEGORY	A	B	C	D
S-4	500-1	484 (500-1)	500-1 3/8 484 (500-1 3/8)	500-1 1/2 484 (500-1 1/2)
CIRCLING	500-1	481 (500-1)	500-1 1/2 481 (500-1 1/2)	580-2 561 (600-2)