

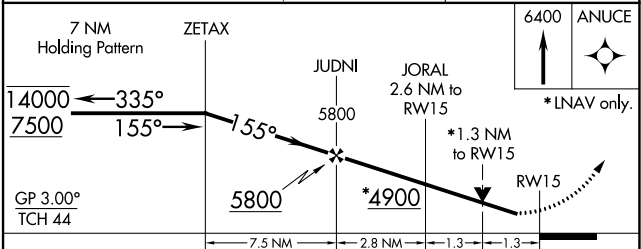
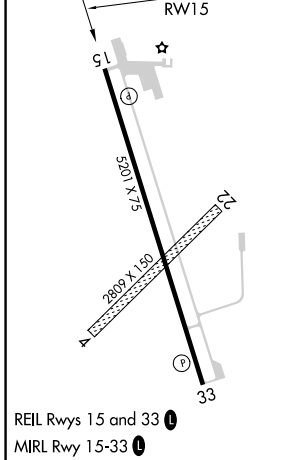
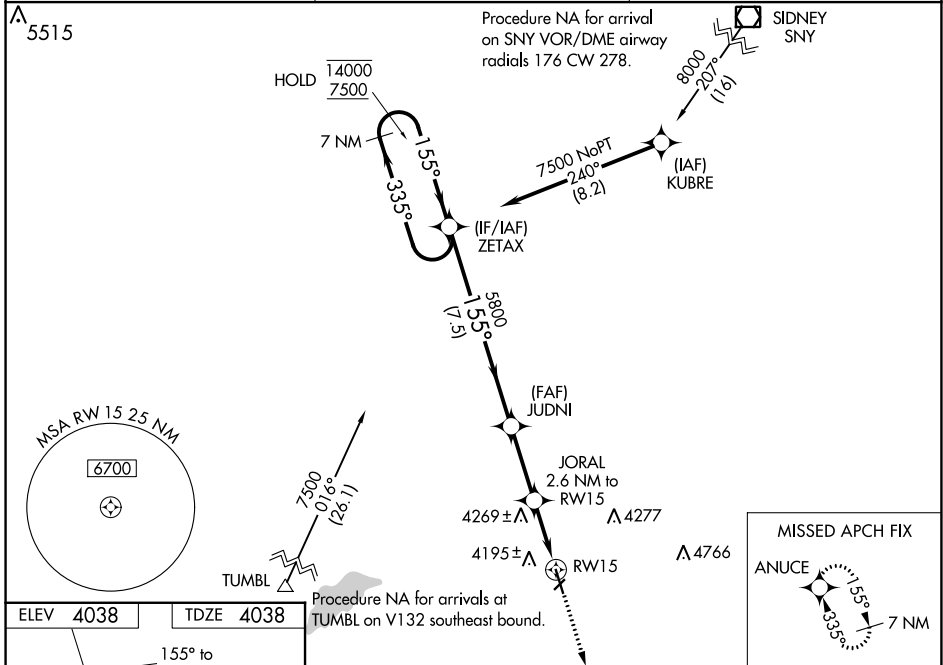
WAAS CH <b>56330</b> <b>W15A</b>	APP CRS <b>155°</b>	Rwy Idg TDZE Apt Elev	<b>5201</b> <b>4038</b> <b>4038</b>
--	------------------------	-----------------------------	---

# RNAV (GPS) RWY 15

STERLING MUNI (STK)

RNP APCH.	<p><b>MISSED APPROACH:</b> Climb to 6400 direct ANUCE and hold.</p>
<p><b>⚠</b> Circling NA to Rws 4 and 22. Rwy 15 helicopter visibility reduction below 3/4 SM NA. For uncompensated Baro-VNAV systems, LNAV/VNAV NA below -22°C or above 54°C.</p>	

AWOS-3 <b>118.525</b>	DENVER CENTER <b>118.475 225.4</b>	UNICOM <b>122.8 (CTAF)</b>
--------------------------	---------------------------------------	-------------------------------



CATEGORY	A	B	C	D
LPV DA		4288-1	250 (300-1)	
LNAV/VNAV DA		4288-1	250 (300-1)	
LNAV MDA	4480-1	442 (500-1)	4480-1 3/8	442 (500-1 3/8)
<input checked="" type="checkbox"/> CIRCLING	4520-1 482 (500-1)	4580-1 542 (600-1)	4620-1 1/2 582 (600-1 1/2)	4720-2 1/4 682 (700-2 1/4)

SW-1, 22 FEB 2024 to 21 MAR 2024

SW-1, 22 FEB 2024 to 21 MAR 2024

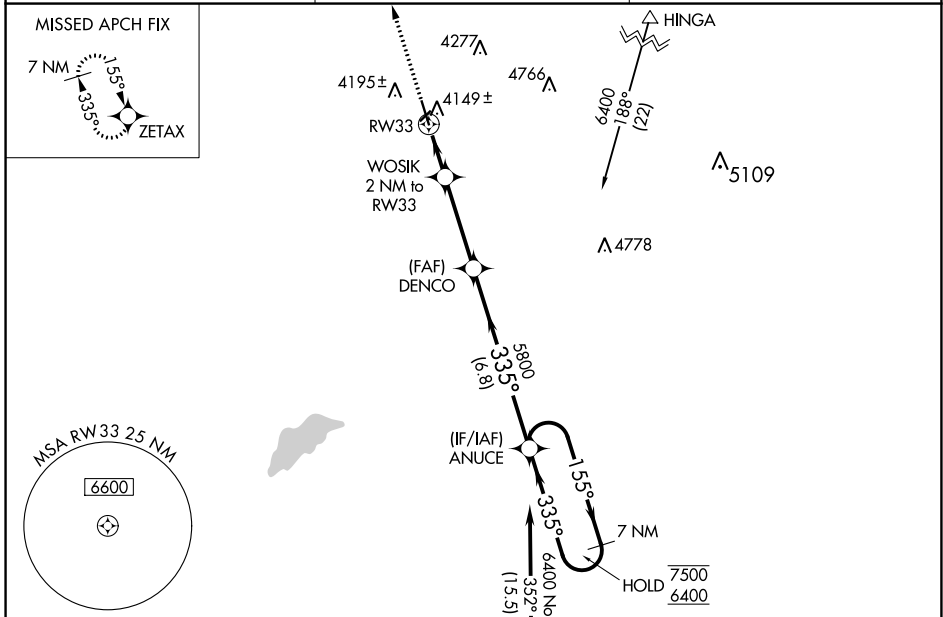
WAAS CH <b>65730</b> <b>W33A</b>	APP CRS <b>335°</b>	Rwy Idg TDZE Apt Elev	<b>5201</b> <b>4028</b> <b>4038</b>
--	------------------------	-----------------------------	---

# RNAV (GPS) RWY 33

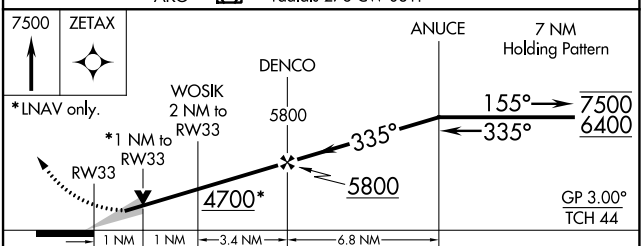
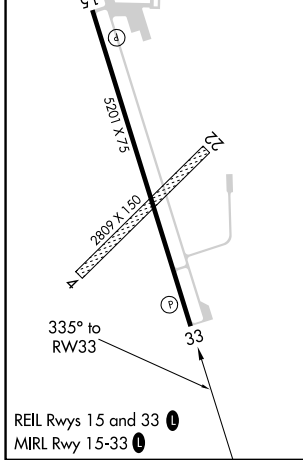
STERLING MUNI (STK)

RNP APCH.	MISSED APPROACH: Climb to 7500 direct ZETAX and hold, continue climb-in-hold to 7500.
-----------	---

AWOS-3 <b>118,525</b>	DENVER CENTER <b>118,475 225.4</b>	UNICOM <b>122.8 (CTAF) 0</b>
--------------------------	---------------------------------------	---------------------------------



ELEV 4038	TDZE 4028
-----------	-----------



CATEGORY	A	B	C	D
LPV DA		4278- <sup>3</sup> / <sub>4</sub>	250 (300- <sup>3</sup> / <sub>4</sub> )	
LNAV/VNAV DA		4332-1	304 (300-1)	
LNAV MDA		4400-1	372 (400-1)	
<b>C</b> CIRCLING	4520-1 482 (500-1)	4580-1 542 (600-1)	4620-1½ 582 (600-1½)	4720-2½ 682 (700-2½)

SW-1, 22 FEB 2024 to 21 MAR 2024

SW-1, 22 FEB 2024 to 21 MAR 2024