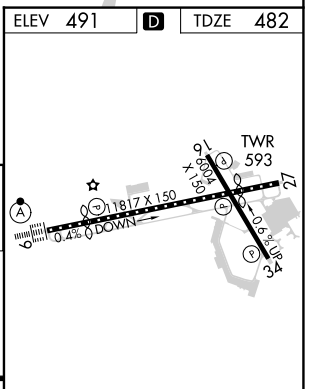
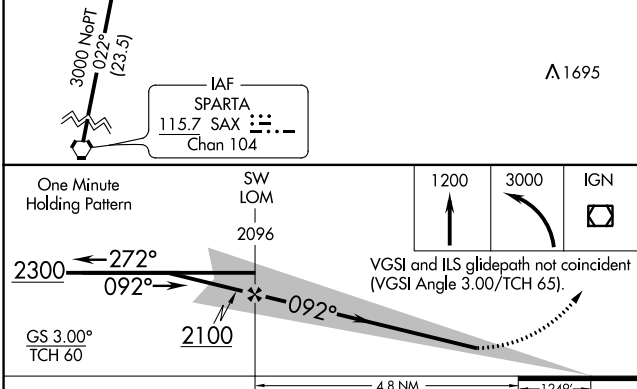
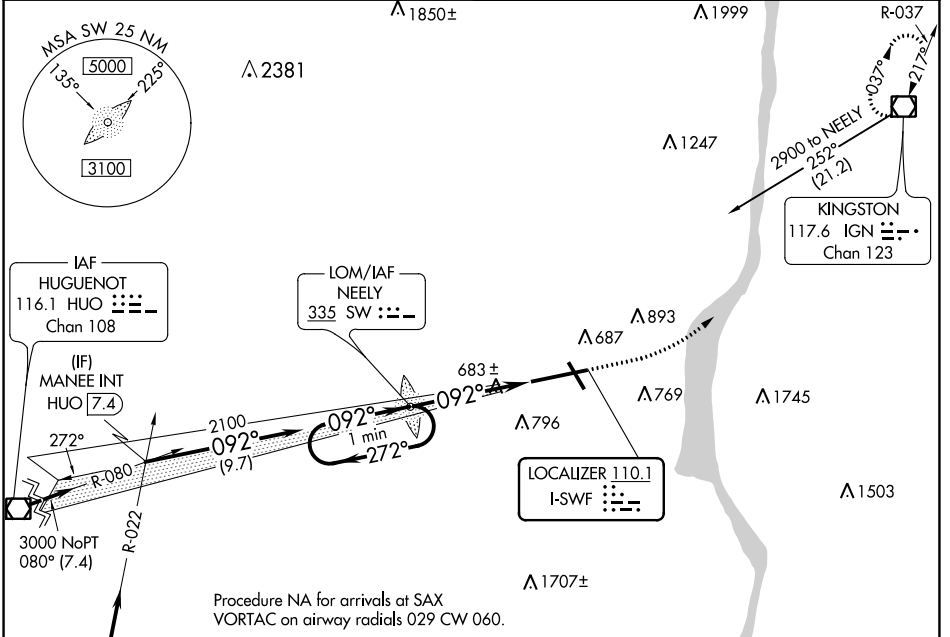


LOC I-SWF 110.1	APP CRS 092°	Rwy Idg 8817
		TDZE 482
		Apt Elev 491

ILS RWY 9 (SA CAT I)
NEW YORK STEWART INTL (SWF)

Requires specific OPSPEC, MSPEC, or LOA approval and use of HUD to DH.	ALSIF-2	MISSED APPROACH: Climb to 1200 then climbing left turn to 3000 direct IGN VOR/DME and hold.

ATIS 124.575	NEW YORK APP CON 132.75 363.1	STEWART TOWER 121.0 254.4	GND CON 121.9
------------------------	---	-------------------------------------	-------------------------



CATEGORY	A	B	C	D
S-ILS 9		RA 142/14 150	DA 632	

SA CATEGORY I ILS - SPECIAL AIRCREW & AIRCRAFT CERTIFICATION REQUIRED

TDZ/CL Rwy 9
HIRL Rwys 9-27 and 16-34
REIL Rwys 16, 27 and 34

NE-2, 22 FEB 2024 to 21 MAR 2024

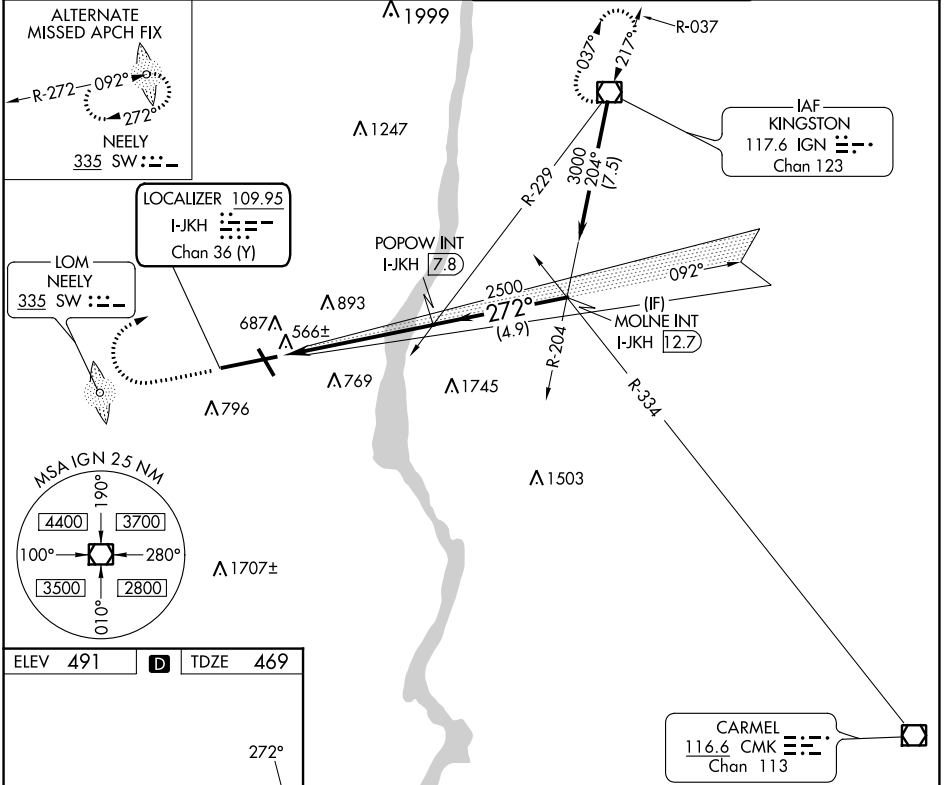
NE-2, 22 FEB 2024 to 21 MAR 2024

LOC/DME I-JKH 109.95 Chan 36 (Y)	APP CRS 272°	Rwy Idg 9817 TDZE 469 Apt Elev 491
--	------------------------	---

ILS or LOC RWY 27

NEW YORK STEWART INTL (SWF)

		MISSED APPROACH: Climb to 1600 then climbing right turn to 3000 direct IGN VOR/DME and hold.	
ATIS 124.575	NEW YORK APP CON 132.75 363.1	STEWART TOWER 121.0 254.4	GND CON 121.9



NE-2, 22 FEB 2024 to 21 MAR 2024

NE-2, 22 FEB 2024 to 21 MAR 2024

ELEV 491	D	TDZE 469
TDZ/CL Rwy 9	HIRL Rwy 9-27 and 16-34	
REIL Rwy 16, 27 and 34		
FAF to MAP 6.1 NM		
Knots	60	90 120 150 180
Min:Sec	6:06	4:04 3:03 2:26 2:02

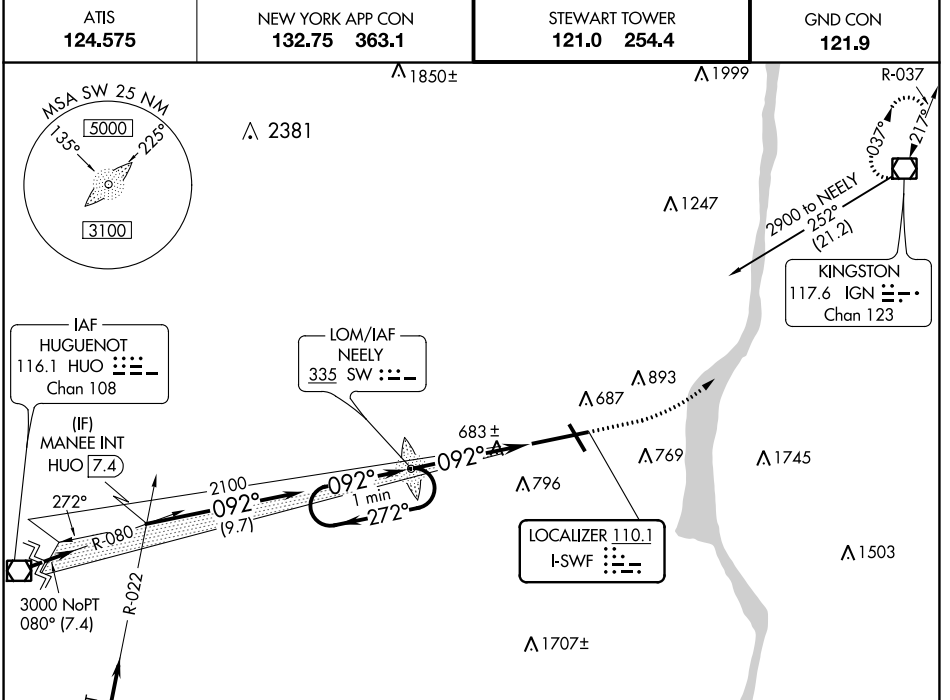
1600 ↑	3000 ↷	IGN 	POPOW INT I-JKH 7.8	MOLNE INT I-JKH 12.7	Procedure Turn NA
* LOC only.					
		GS 3.00° TCH 55			
CATEGORY	A	B	C	D	
S-ILS 27	719-1 250 (300-1)				
S-LOC 27	840-1 371 (400-1)			840-1¼ 371 (400-1¼)	
C CIRCLING	1200-1 709 (800-1)		1200-2 709 (800-2)		1200-2¼ 709 (800-2¼)

LOC I-SWF 110.1	APP CRS 092°	Rwy Idg 8817
		TDZE 482
		Apt Elev 491

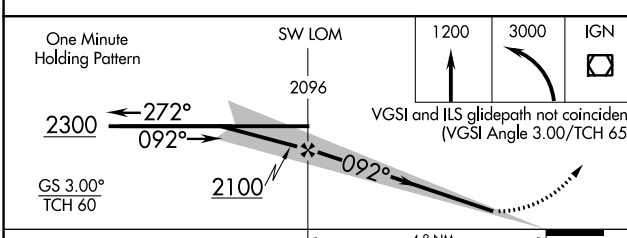
ILS or LOC RWY 9

NEW YORK STEWART INTL (SWF)

	MISSED APPROACH: Climb to 1200 then climbing left turn to 3000 direct IGN VOR/DME and hold.		
	ATIS 124.575	NEW YORK APP CON 132.75 363.1	STEWART TOWER 121.0 254.4



Procedure NA for arrivals at SAX VORTAC on airway radials 029 CW 060.



ELEV 491	D	TDZE 482
----------	----------	----------

Diagram of RWY 9 showing TWR 593, HIRL Rwy 9-27 and 16-34, REIL Rwy 16, 27 and 34, and FAF to MAP 4.8 NM.

TDZ/CL Rwy 9	60	90	120	150	180
HIRL Rwy 9-27 and 16-34	4:48	3:12	2:24	1:55	1:36
REIL Rwy 16, 27 and 34					

CATEGORY	A	B	C	D
S-ILS 9		682/18 200 (200-½)		
S-LOC 9	940/24 458 (500-½)		940/50 458 (500-1)	
C CIRCLING	1200-1 709 (800-1)		1200-2 709 (800-2)	1200-2¼ 709 (800-2¼)

NE-2, 22 FEB 2024 to 21 MAR 2024

NE-2, 22 FEB 2024 to 21 MAR 2024

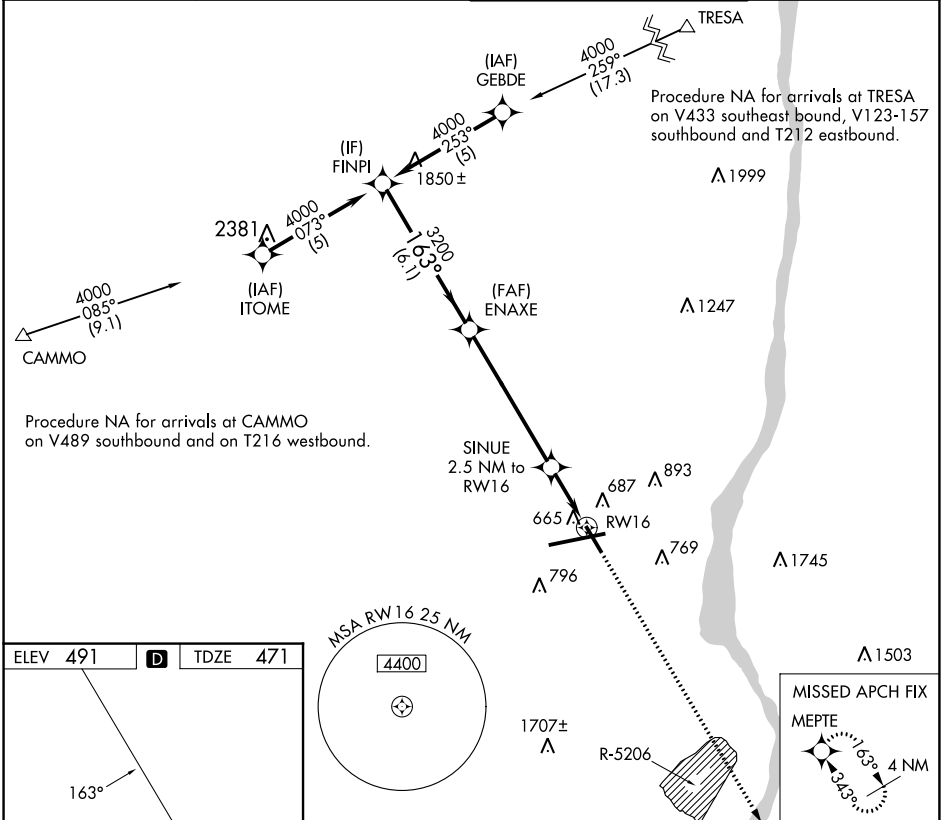
APP CRS	Rwy Idg	6004
163°	TDZE	471
	Apt Elev	491

RNAV (GPS) RWY 16

NEW YORK STEWART INTL (SWF)

RNP APCH-GPS.	MISSED APPROACH: Climb to 4000 direct MEPTTE and hold, continue climb-in-hold to 4000.
<p>▼ Rwy 16 helicopter visibility reduction below 3/4 SM NA.</p> <p>▲ Procedure NA when restricted area R-5206 is active.</p>	

ATIS 124.575	NEW YORK APP CON 132.75 363.1	STEWART TOWER 121.0 254.4	GND CON 121.9
------------------------	---	-------------------------------------	-------------------------



NE-2, 22 FEB 2024 to 21 MAR 2024

NE-2, 22 FEB 2024 to 21 MAR 2024

ELEV	491	D	TDZE	471
------	------------	----------	------	------------

TDZ/CL Rwy 9
HIRL Rws 9-27 and 16-34
REIL Rws 16, 27 and 34

<p>FINPI 4000</p> <p>ENAXE 3200</p> <p>SINUE 2.5 NM to RW16</p> <p>MEPTTE 4000</p> <p>R-5206</p> <p>1707±</p> <p>665</p> <p>687</p> <p>796</p> <p>893</p> <p>769</p> <p>1320</p> <p>2 NM to RW16</p> <p>2 NM to RW16</p> <p>3.07° TCH 40</p> <p>163°</p> <p>343°</p> <p>4 NM</p>	<p>VGSI and descent angles not coincident (VGSI Angle 3.00/TCH 53).</p>															
<p>6.1 NM</p> <p>5.8 NM</p> <p>0.5 NM</p> <p>2 NM</p>																
<table border="1"> <tr> <th>CATEGORY</th> <th>A</th> <th>B</th> <th>C</th> <th>D</th> </tr> <tr> <td>LNNAV MDA</td> <td>1140-1</td> <td>669 (700-1)</td> <td>1140-1 7/8</td> <td>669 (700-1 7/8)</td> </tr> <tr> <td>C CIRCLING</td> <td>1200-1</td> <td>709 (800-1)</td> <td>1200-2 709 (800-2)</td> <td>1200-2 1/4 709 (800-2 1/4)</td> </tr> </table>	CATEGORY	A	B	C	D	LNNAV MDA	1140-1	669 (700-1)	1140-1 7/8	669 (700-1 7/8)	C CIRCLING	1200-1	709 (800-1)	1200-2 709 (800-2)	1200-2 1/4 709 (800-2 1/4)	
CATEGORY	A	B	C	D												
LNNAV MDA	1140-1	669 (700-1)	1140-1 7/8	669 (700-1 7/8)												
C CIRCLING	1200-1	709 (800-1)	1200-2 709 (800-2)	1200-2 1/4 709 (800-2 1/4)												

APP CRS **272°**
 Rwy Idg **9817**
 TDZE **469**
 App Elev **491**

RNAV (GPS) RWY 27

NEW YORK STEWART INTL (SWF)

RNP APCH.

⚠ For uncompensated Baro-VNAV systems, LNAV/VNAV NA below -15°C or above 54°C.

MISSED APPROACH: Climb to 3000 direct EKETE and hold.

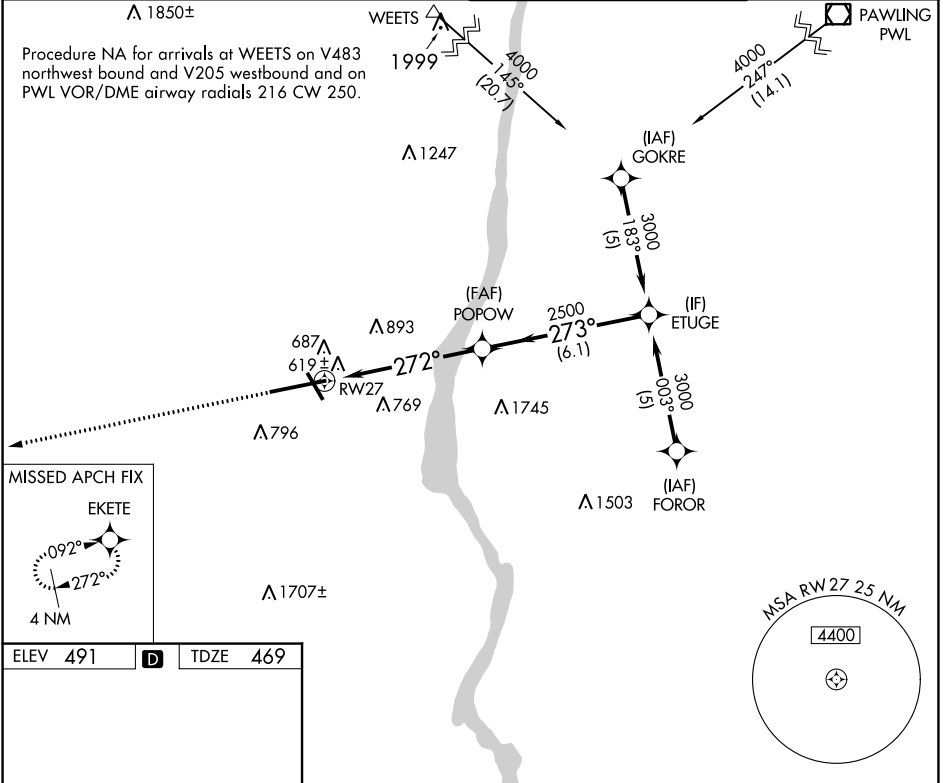
ATIS
124.575

NEW YORK APP CON
132.75 363.1

STEWART TOWER
121.0 254.4

GND CON
121.9

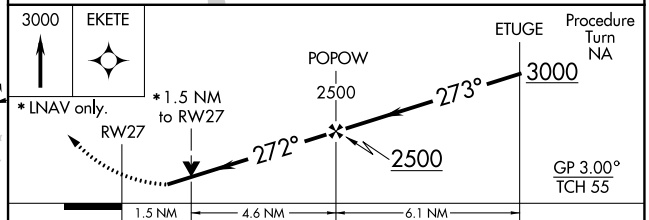
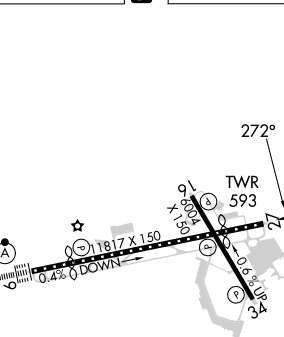
Procedure NA for arrivals at WEETS on V483 northwest bound and V205 westbound and on PWL VOR/DME airway radials 216 CW 250.



NE-2, 22 FEB 2024 to 21 MAR 2024

NE-2, 22 FEB 2024 to 21 MAR 2024

ELEV **491** **D** TDZE **469**



CATEGORY	A	B	C	D
LNAV/DA/VNAV	1048-2 579 (600-2)			
LNAV MDA	1000-1 531 (600-1)	1000-1½ 531 (600-1½)	1000-1¾ 531 (600-1¾)	1000-1¾ 531 (600-1¾)
C CIRCLING	1200-1 709 (800-1)	1200-2 709 (800-2)	1200-2½ 709 (800-2½)	1200-2½ 709 (800-2½)

TDZ/CL Rwy 9
 HIRL Rws 9-27 and 16-34
 REIL Rws 16, 27 and 34

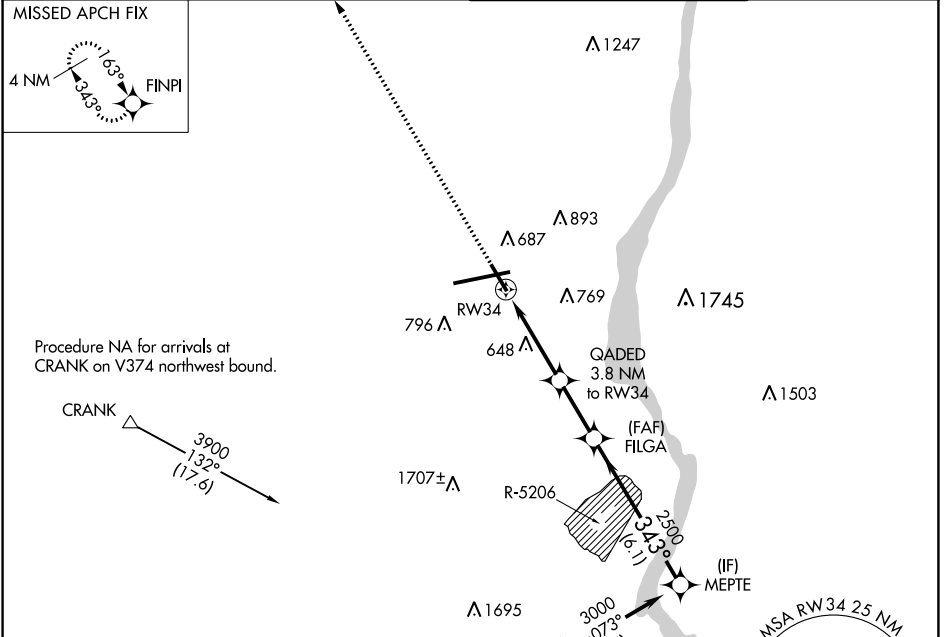
WAAS CH 90217 W34A	APP CRS 343°	Rwy Idg TDZE 462 Apt Elev 491	6004
--	------------------------	---	-------------

RNAV (GPS) RWY 34

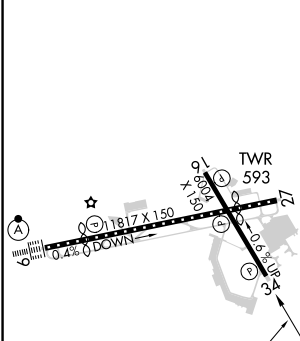
NEW YORK STEWART INTL (SWF)

RNP APCH - GPS.	MISSED APPROACH: Climb to 3900 direct FINPI and hold.
Procedure NA when restricted area R-5206 is active.	

ATIS 124.575	NEW YORK APP CON 132.75 363.1	STEWART TOWER 121.0 254.4	GND CON 121.9
------------------------	---	-------------------------------------	-------------------------



ELEV 491	D	TDZE 462
----------	----------	----------



TDZ/CL Rwy 9	HIRL Rws 9-27 and 16-34	REIL Rws 16, 27 and 34
--------------	-------------------------	------------------------

3900	FINPI	QAGED 3.8 NM to RW34	FILGA 2500	MEPTE 3000
		1.7 NM to RW34		GP 3.00° TCH 50
		1.7 NM	2.1 NM	2.4 NM
CATEGORY	A	B	C	D
LPV DA	900-1¼		438 (500-1¼)	
LNAV MDA	1020-1	558 (600-1)	1020-1½	558 (600-1½)
C CIRCLING	1200-1	709 (800-1)	1200-2 709 (800-2)	1200-2¼ 709 (800-2¼)

NE-2, 22 FEB 2024 to 21 MAR 2024

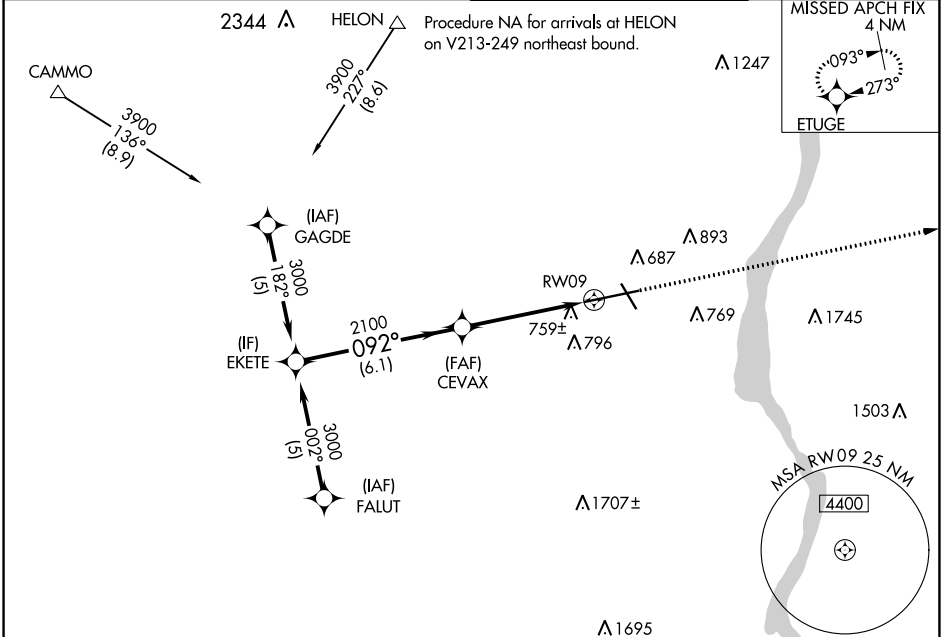
NE-2, 22 FEB 2024 to 21 MAR 2024

WAAS CH 62818 W09A	APP CRS 092°	Rwy Idg 8817 TDZE 482 Apr Elev 491
--	------------------------	---

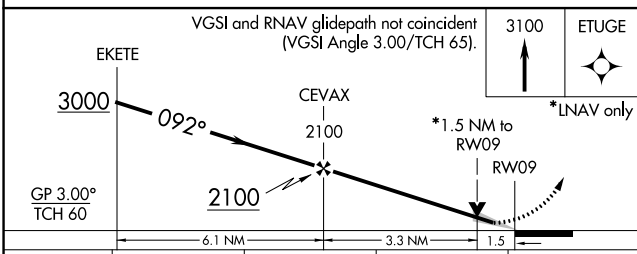
RNAV (GPS) RWY 9

NEW YORK STEWART INTL (SWF)

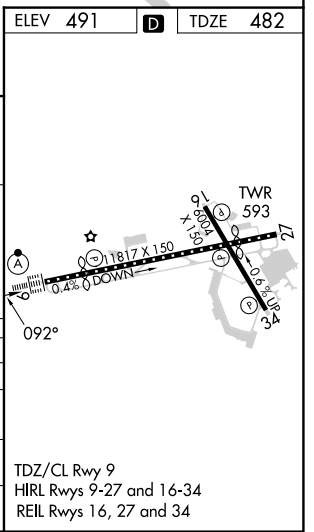
RNP APCH.	ALSF-2	MISSED APPROACH: Climb to 3100 direct ETUGE and hold.	
<p>⚠ Inop table does not apply to LNAV/VNAV. For uncompensated Baro-VNAV systems, LNAV/VNAV NA below -15°C or above 54°C.</p>			
ATIS 124.575	NEW YORK APP CON 132.75 363.1	STEWART TOWER 121.0 254.4	GND CON 121.9



ELEV 491	D	TDZE 482
----------	----------	----------



CATEGORY	A	B	C	D
LPV DA		682/24	200 (200-½)	
LNAV/ VNAV DA		1098-2	616 (700-2)	
LNAV MDA	1020/24	538 (600-½)	1020/55 538 (600-1)	1020/60 538 (600-¼)
C CIRCLING	1200-1	709 (800-1)	1200-2 709 (800-2)	1200-2¼ 709 (800-2¼)



NE-2, 22 FEB 2024 to 21 MAR 2024

NE-2, 22 FEB 2024 to 21 MAR 2024