

WAAS CH 49200 W12A	APP CRS 116°	Rwy Idg TDZE Apt Elev	4001 193 193
--	------------------------	-----------------------------	---

RNAV (GPS) RWY 12

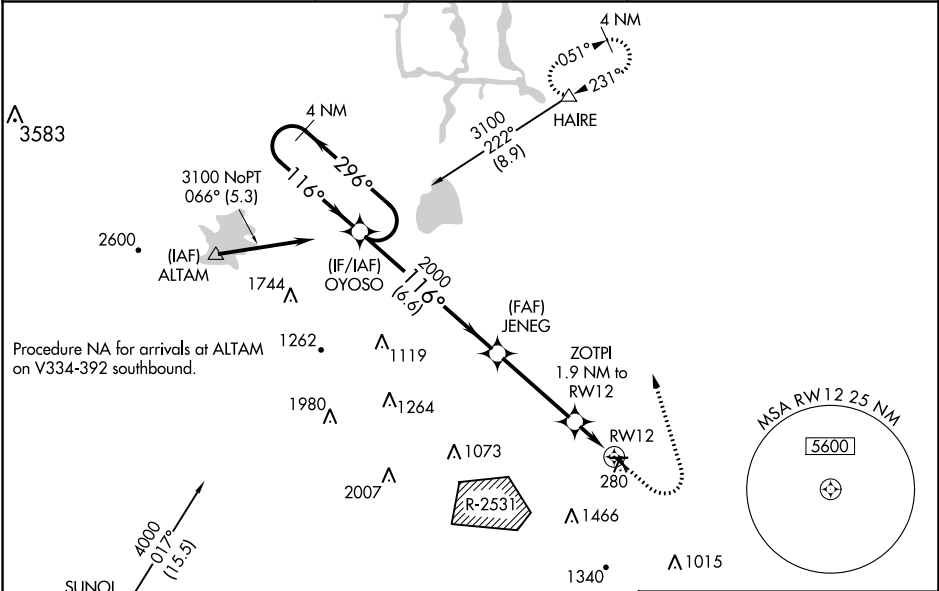
TRACY MUNI (TCY)

RNP APCH

▼ For uncompensated Baro-VNAV systems, LNAV/VNAV NA below -15°C or above 54°C.
 Circling NA southwest of Rwy 12-30. Baro-VNAV and VDP NA when using Stockton altimeter setting.
 Circling Rwy 30 NA at night. Rwy 12 helicopter visibility reduction below 3/4 SM NA.
 When local altimeter setting not received, use Stockton altimeter setting; increase all DAs to 507 feet;
 increase all MDAs 60 feet and visibilities LNAV Cat C 1/8 SM.

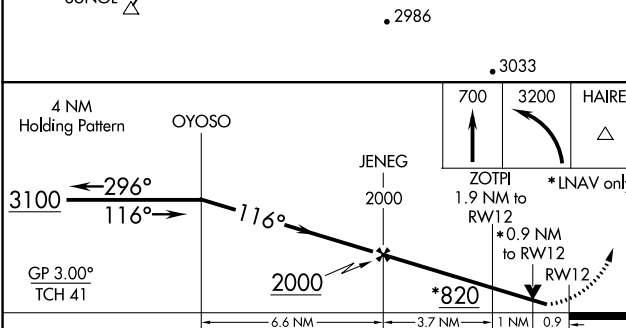
MISSED APPROACH:
 Climb to 700 then
 climbing left turn to
 3200 direct HAIRE
 and hold.

AWOS-3 118.375	NORCAL APP CON 123.85 278.3	UNICOM 123.075 (CTAF)
--------------------------	---------------------------------------	---------------------------------

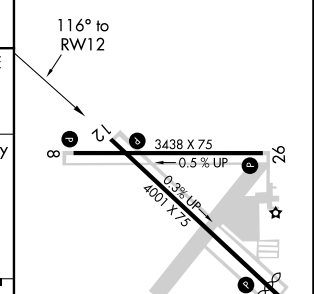


SW-2, 22 FEB 2024 to 21 MAR 2024

SW-2, 22 FEB 2024 to 21 MAR 2024



ELEV 193	TDZE 193
----------	----------



CATEGORY	A	B	C	D
LPV DA	443-7/8	250 (300-7/8)		NA
LNAV/VNAV DA	447-7/8	254 (300-7/8)		NA
LNAV MDA	520-1	327 (400-1)		NA
CIRCLING	580-1 387 (400-1)	660-1 467 (500-1)	660-1 1/2 467 (500-1 1/2)	NA

MIRL Rwy 8-26 and 12-30
 REIL Rwy 8, 12, 26 and 30

WAAS CH 49040	APP CRS 255°	Rwy Idg TDZE 186	3438
W26A		Apt Elev 193	

RNAV (GPS) RWY 26

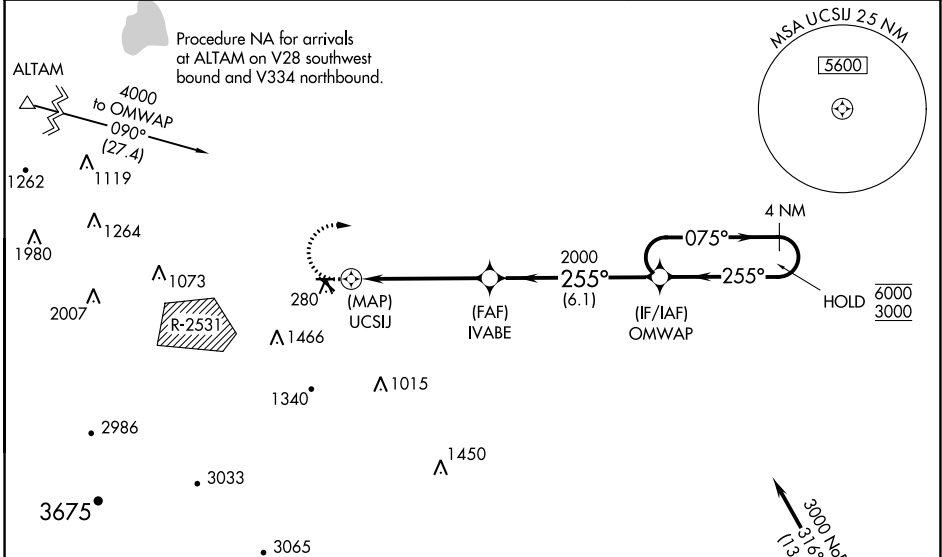
TRACY MUNI (TCY)

RNP APCH.

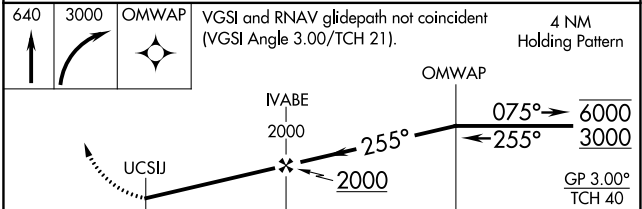
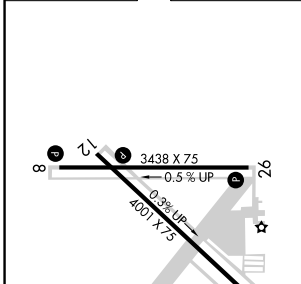
Baro-VNAV NA when using Stockton altimeter setting. For uncompensated Baro-VNAV systems, LNAV/VNAV NA below -15°C or above 54°C. Circling NA southwest of Rwy 12-30. Circling Rwy 30 NA at night. Rwy 26 helicopter visibility reduction below ¾ SM NA. When local altimeter setting not received, use Stockton altimeter setting: increase LPV DA to 496 feet, increase LNAV/VNAV DA to 553 feet; increase all MDAs 60 feet and visibility LNAV Cat C ½ SM.

MISSED APPROACH: (Do not exceed 210K until OMWAP) Climb to 640 then climbing right turn to 3000 direct OMWAP and hold.

AWOS-3 118.375	NORCAL APP CON 123.85 278.3	UNICOM 123.075 (CTAF)
--------------------------	---------------------------------------	---------------------------------



ELEV 193	TDZE 186
----------	----------



CATEGORY	A	B	C	D
LPV DA	436-7/8	250 (300-7/8)		NA
LNAV/VNAV DA	493-11/8	307 (300-11/8)		NA
LNAV MDA	540-1	354 (400-1)		NA
C CIRCLING	580-1 387 (400-1)	660-1 467 (500-1)	660-1½ 467 (500-1½)	NA

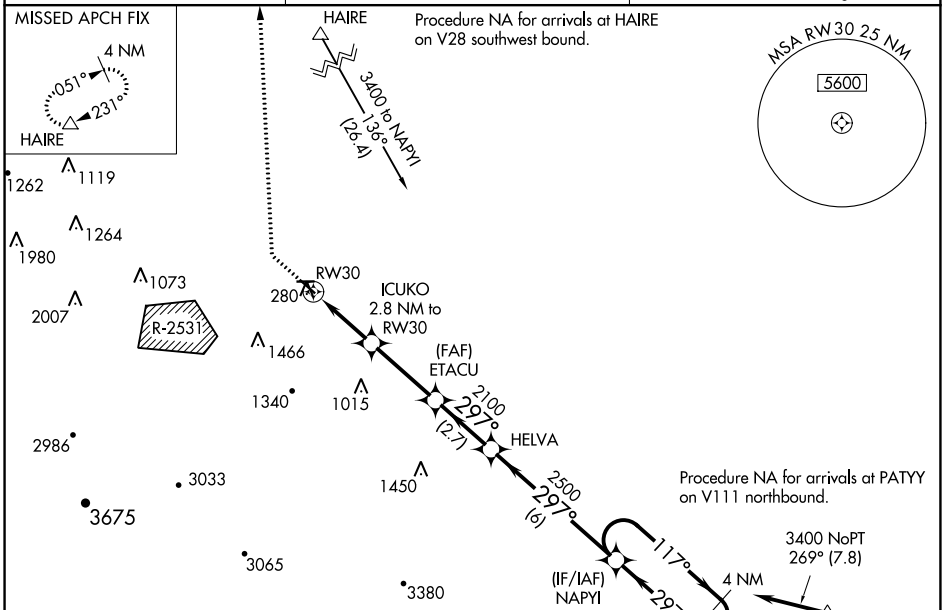
MIRL Rwy 8-26 and 12-30
REIL Rwy 8, 12, 26 and 30

WAAS CH 69201 W30A	APP CRS 297°	Rwy Idg TDZE Apt Elev	3740 193 193
--	------------------------	-----------------------------	---

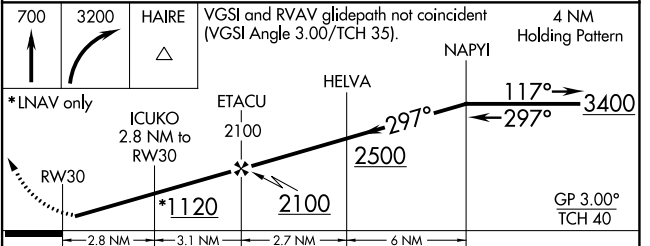
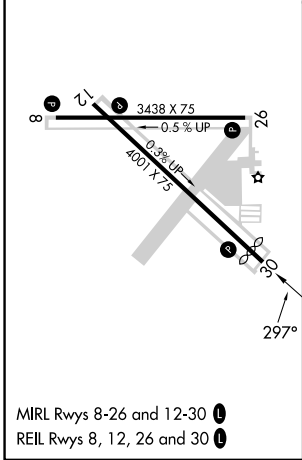
RNAV (GPS) RWY 30

TRACY MUNI (TCY)

RNP APCH	AWOS-3 118.375	NORCAL APP CON 123.85 278.3	UNICOM 123.075 (CTAF)
----------	--------------------------	---------------------------------------	---------------------------------



ELEV 193	TDZE 193
----------	----------



CATEGORY	A	B	C	D
LPV DA		447-1 254 (300-1)		NA
LNAV/VNAV DA		443-1 250 (300-1)		NA
LNAV MDA		540-1 347 (400-1)		NA
C CIRCLING	580-1 387 (400-1)	660-1 467 (500-1)	660-1½ 467 (500-1½)	NA

SW-2, 22 FEB 2024 to 21 MAR 2024

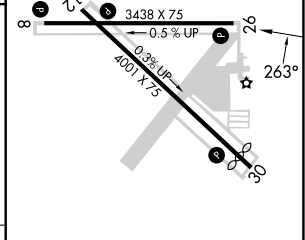
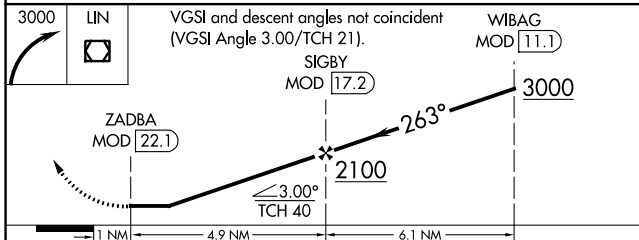
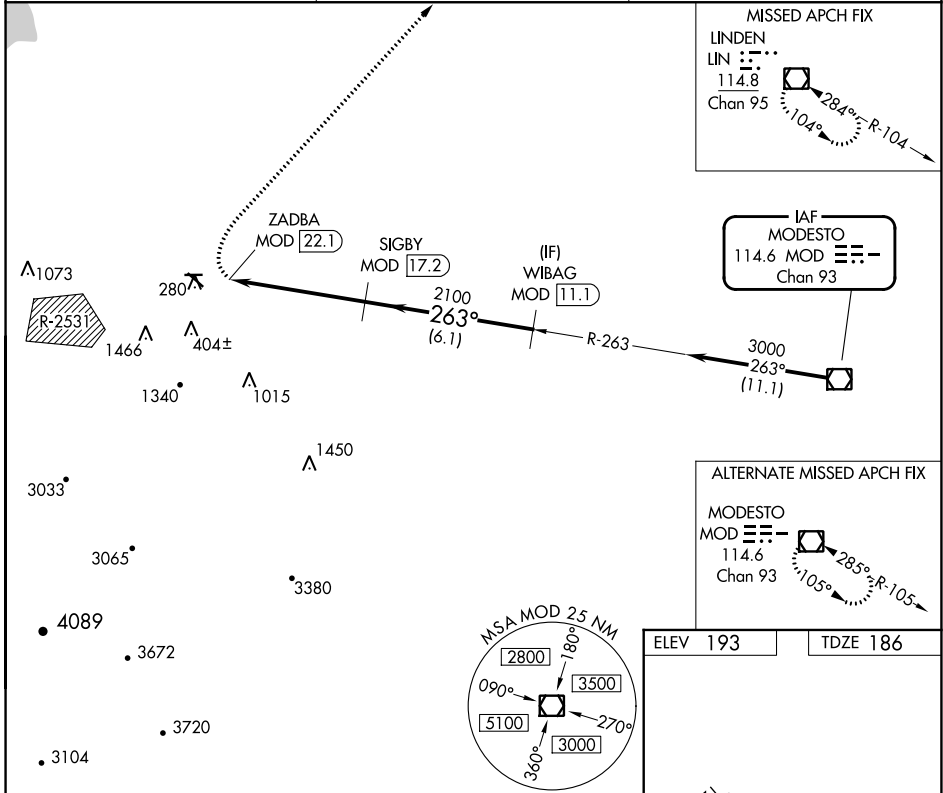
SW-2, 22 FEB 2024 to 21 MAR 2024

VOR/DME MOD 114.6 Chan 93	APP CRS 263°	Rwy Idg TDZE 186 Apt Elev 193	3438
---	------------------------	---	-------------

VOR RWY 26

TRACY MUNI (TCY)

DME required.		MISSED APPROACH: Climbing right turn to 3000 direct LIN VOR/DME and hold.
AWOS-3 118.375	NORCAL APP CON 123.85 278.3	UNICOM 123.075 (CTAF) 0



CATEGORY	A	B	C	D
S-26	760-1¼	574 (600-1¼)	760-1⅝ 574 (600-1⅝)	NA
CIRCLING	760-1¼	567 (600-1¼)	760-1⅝ 567 (600-1⅝)	NA

MIRL Rwy 8-26 and 12-30
REIL Rwy 8, 12, 26 and 30

SW-2, 22 FEB 2024 to 21 MAR 2024

SW-2, 22 FEB 2024 to 21 MAR 2024