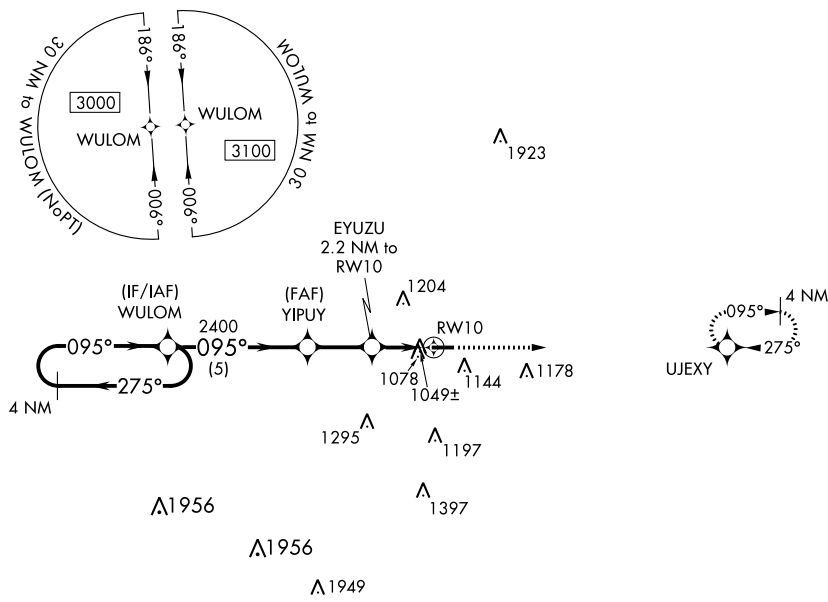


WAAS CH <b>61134</b> <b>W10A</b>	APP CRS <b>095°</b>	Rwy Idg TDZE Apt Elev	<b>4002</b> <b>920</b> <b>920</b>
--	------------------------	-----------------------------	---

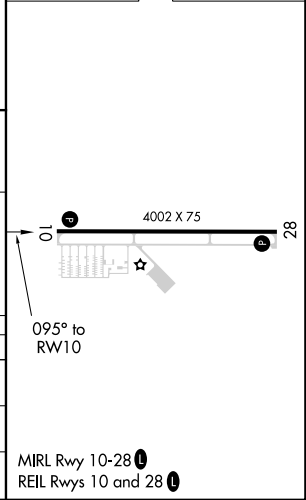
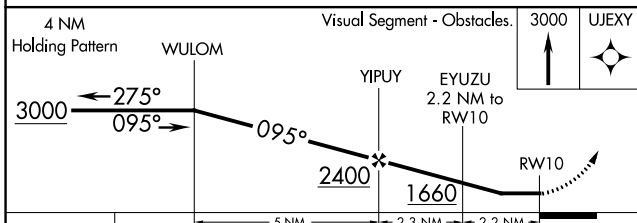
# RNAV (GPS) RWY 10

MASON JEWETT FLD (TEW)

RNP APCH.		MISSED APPROACH: Climb to 3000 direct UJEXY and hold.
▼ Rwy 10 helicopter visibility reduction below 1 SM NA. Straight-in Rwy 10 NA at night, Circling Rwy 10 NA at night. ▲		
AWOS-3P <b>119.425</b>	GREAT LAKES APP CON ★ <b>118.65 226.4</b>	UNICOM <b>122.7 (CTAF) 0</b>



ELEV 920	TDZE 920
----------	----------



CATEGORY	A	B	C	D
LP MDA	1300-1	380 (400-1)		NA
LNVA MDA	1380-1	460 (500-1)		NA
CIRCLING	1500-1	580 (600-1)		NA

EC-1, 22 FEB 2024 to 21 MAR 2024

EC-1, 22 FEB 2024 to 21 MAR 2024

WAAS CH <b>53534</b> <b>W28A</b>	APP CRS <b>275°</b>	Rwy Idg TDZE Apt Elev	<b>4002</b> <b>918</b> <b>920</b>
--	------------------------	-----------------------------	---

# RNAV (GPS) RWY 28

MASON JEWETT FLD (TEW)

RNP APCH - GPS.

**▽** Rwy 28 helicopter visibility reduction below 3/4 SM NA.  
**▲** Circling Rwy 10 NA at night.

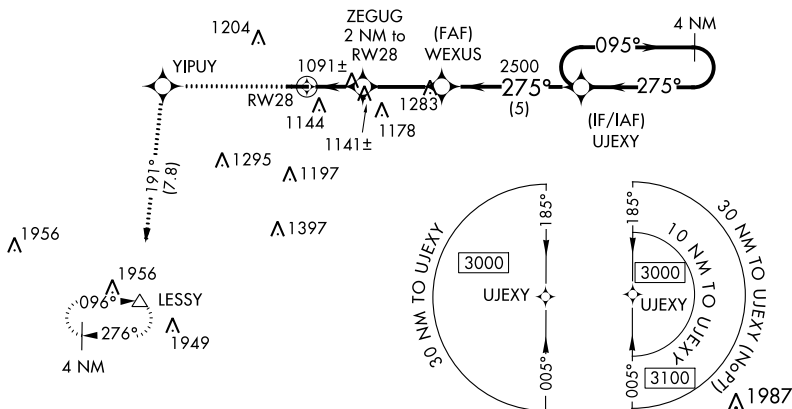
MISSED APPROACH: Climb to 3000 direct YIPUY and on track 191° direct LESSY and hold.

AWOS-3P  
**119.425**

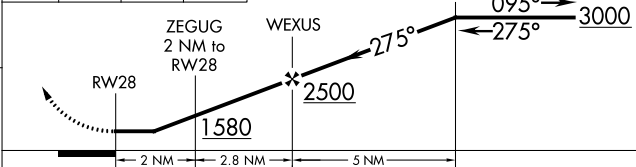
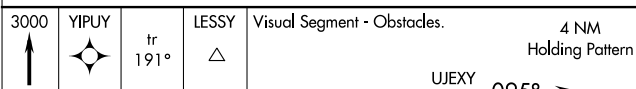
GREAT LAKES APP CON ★  
**118.65 226.4**

UNICOM  
**122.7 (CTAF)**

▲1923



ELEV 920 TDZE 918



CATEGORY		A	B	C	D
LP	MDA	1360-1	440 (500-1)		NA
	LNAV MDA	1400-1	480 (500-1)		NA
	CIRCLING	1500-1	580 (600-1)		NA

MIRL Rwy 10-28  
REIL Rwy 10 and 28

EC-1, 22 FEB 2024 to 21 MAR 2024

EC-1, 22 FEB 2024 to 21 MAR 2024