

WAAS CH <b>99626</b> <b>W18A</b>	APP CRS <b>176°</b>	Rwy Idg <b>3907</b> TDZE <b>757</b> Apt Elev <b>758</b>
--	------------------------	---

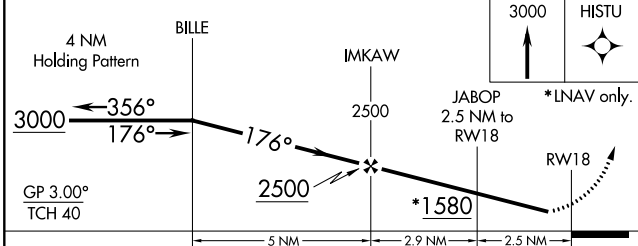
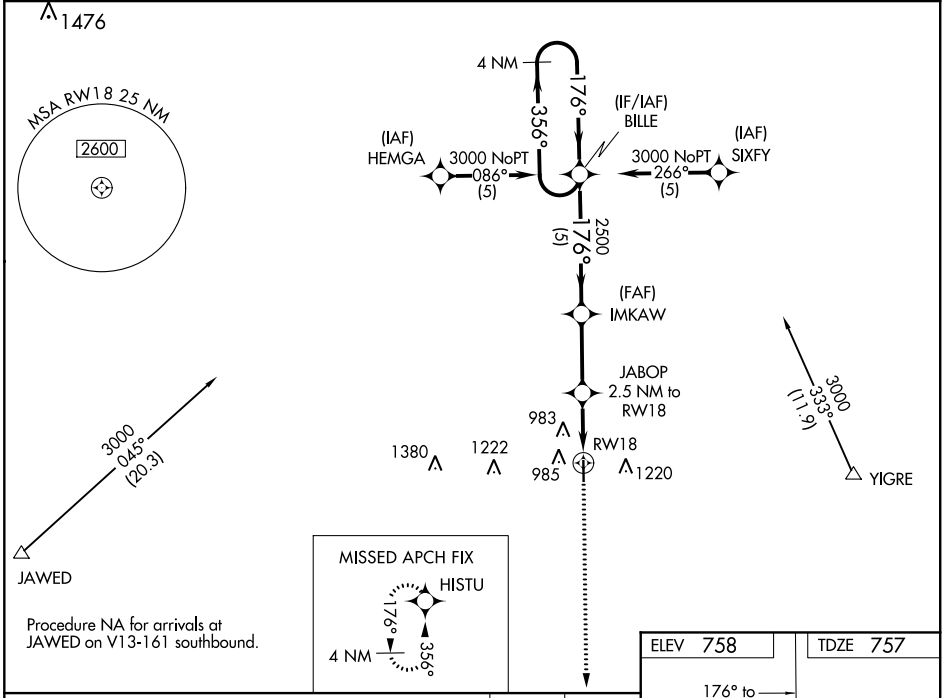
# RNAV (GPS) RWY 18

TRENTON MUNI (TRX)

**Baro-VNAV NA.** Use Chillicothe altimeter setting; when not received, use Kirksville altimeter setting and increase LPV DA to 1191 feet and all visibilities  $\frac{3}{8}$  SM, LNAV/VNAV DA to 1341 feet and all visibilities  $\frac{1}{4}$  SM; increase all MDAs 100 feet and Circling Cat B visibility  $\frac{1}{4}$  SM. DME/DME RNP-0.3 NA. Helicopter visibility reduction below  $\frac{3}{4}$  SM NA.

**MISSED APPROACH:** Climb to 3000 direct HISTU and hold.

KANSAS CITY CENTER <b>125.25 235.975</b>	UNICOM <b>122.8 (CTAF) 0</b>
---	---------------------------------



ELEV 758	TDZE 757
176° to RW18	
81	
4307 X 75	
36	
MIRL Rwy 18-36 0	
REIL Rwy 18 and 36 0	

CATEGORY	A	B	C	D
LPV DA	1098-1 $\frac{1}{8}$	341 (400-1 $\frac{1}{8}$ )		NA
LNAV/VNAV DA	1248-1 $\frac{3}{4}$	491 (500-1 $\frac{3}{4}$ )		NA
LNAV MDA	1180-1	423 (500-1)		NA
CIRCLING	1340-1 582 (600-1)	1700-1 $\frac{1}{4}$ 942 (1000-1 $\frac{1}{4}$ )		NA

NC-3, 04 NOV 2021 to 02 DEC 2021

NC-3, 04 NOV 2021 to 02 DEC 2021

WAAS CH <b>63126</b> <b>W36A</b>	APP CRS <b>356°</b>	Rwy Idg <b>4307</b> TDZE <b>757</b> Apt Elev <b>758</b>
--	------------------------	---

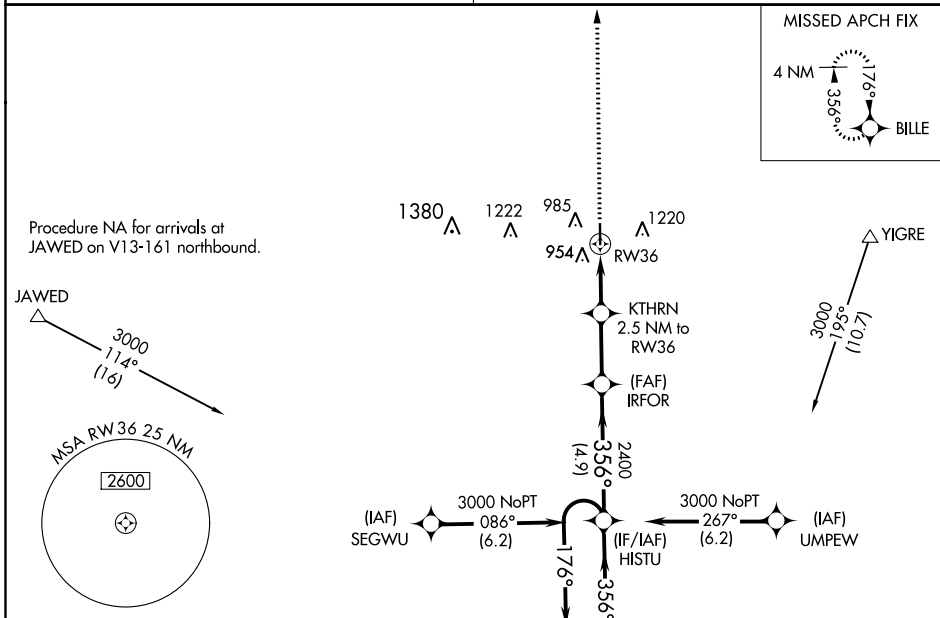
# RNAV (GPS) RWY 36

TRENTON MUNI (TRX)

**▼** When VGSI inop, Circling Rwy 18 NA at night. Baro-VNAV NA. Use Chillicothe altimeter setting; when not received, use Kirksville altimeter setting and increase LPV DA to 1175 feet and all visibilities ¼ SM, LNAV/VNAV DA to 1288 feet and all visibilities ⅓ SM; increase all MDAs 100 feet and Circling Cat B visibility ¼ SM. DME/DME RNP-0.3 NA. Visibility reduction by helicopters NA.

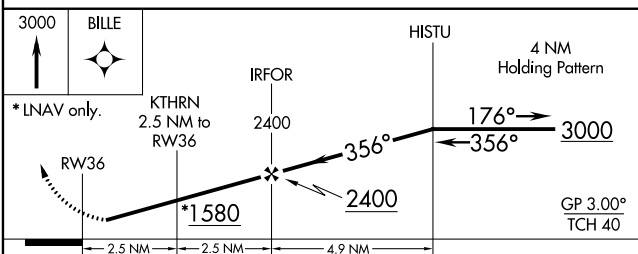
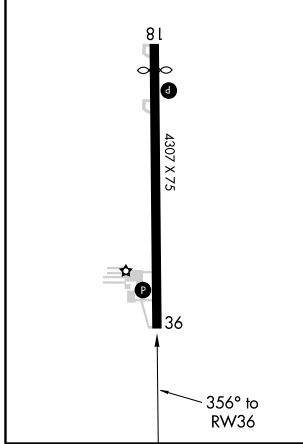
**MISSED APPROACH:** Climb to 3000 direct BILLE and hold.

KANSAS CITY CENTER <b>125.25 235.975</b>	UNICOM <b>122.8 (CTAF) 1</b>
---	---------------------------------



ELEV <b>758</b>	TDZE <b>757</b>
-----------------	-----------------

MIRL Rwy 18-36 **1**  
REIL Rwy 18 and 36 **1**



CATEGORY	A	B	C	D
LPV DA	1082-1⅛	325 (400-1⅛)		NA
LNAV/ VNAV DA	1195-1½	438 (500-1½)		NA
LNAV MDA	1320-1	563 (600-1)		NA
CIRCLING	1340-1 582 (600-1)	1700-1¼ 942 (1000-1¼)		NA

NC-3, 04 NOV 2021 to 02 DEC 2021

NC-3, 04 NOV 2021 to 02 DEC 2021