

LOC/DME I-VJI 108.3 Chan 20	APP CRS 241°	Rwy Idg TDZE Apt Elev	4471 2087 2087
--	------------------------	-----------------------------	---

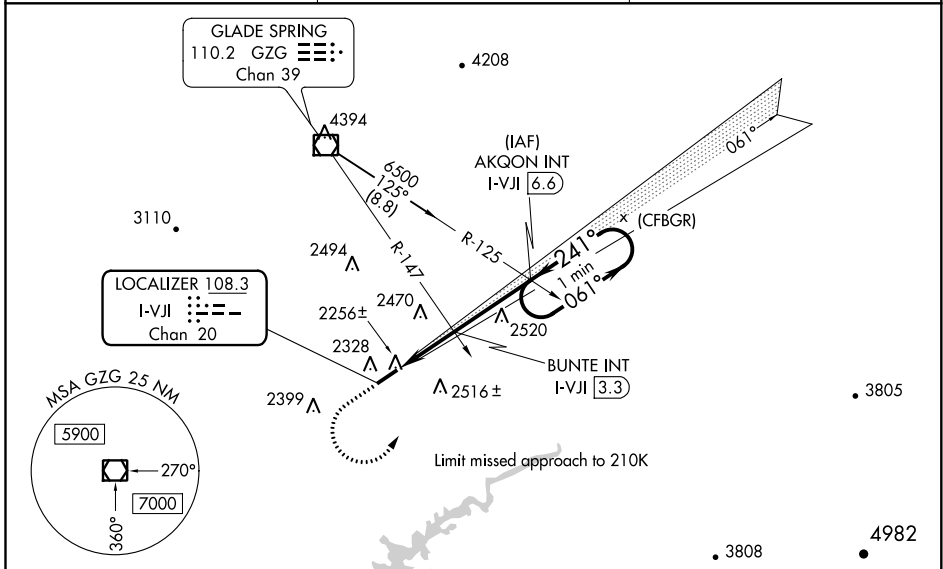
LOC RWY 24
VIRGINIA HIGHLANDS (VJI)

⚠ Inop table does not apply. GPS required. Cat D Straight-in minima NA when using Tri-Cities altimeter setting. When local altimeter setting not received; use Tri-Cities altimeter setting and increase all MDA 140 feet; and increase S-24 Cat A and B and Circling Cat B visibility ¼ mile, and S-24 Cat C and Circling Cat C visibility ½ mile. Increase BUNTE fix minimums S-24 Cat C visibility ¾ mile, Circling Cats A and B visibility ¼ mile, and Circling Cat C visibility ½ mile. Helicopter visibility reduction below 1 SM NA.

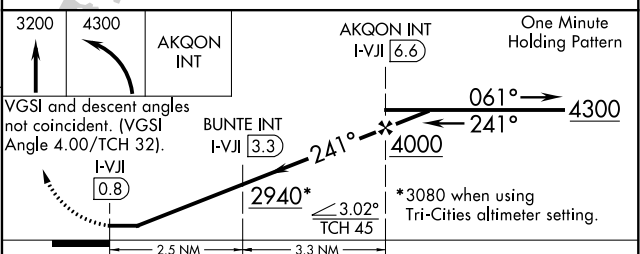
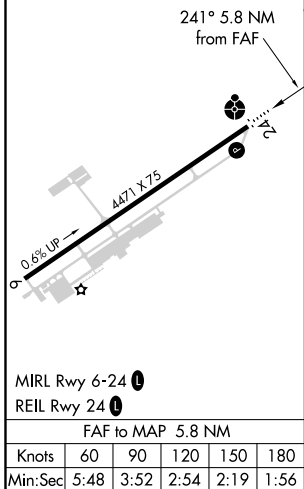


MISSED APPROACH: Climb to 3200 then climbing left turn to 4300 direct AKQON INT and hold.

AWOS-3 128.125	TRI-CITY APP CON ★ 125.25 349.0	UNICOM 122.8(CTAF) 0
--------------------------	---	--------------------------------



ELEV 2087	TDZE 2087
-----------	-----------



CATEGORY	A		B		C		D	
	S-24	2940-1	853 (900-1)	2940-1¼	853 (900-1¼)	2940-2½	853 (900-2½)	853 (900-2½)
C CIRCLING	2940-1¼	853 (900-1¼)	2940-2½	853 (900-2½)	2940-2½	853 (900-2½)	3080-3	993 (1000-3)
BUNTE FIX MINIMUMS								
S-24	2520-1	433 (500-1)	2520-1¼	433 (500-1¼)	2520-1¼	433 (500-1¼)	2520-1¼	433 (500-1¼)
C CIRCLING	2860-1	773 (800-1)	2900-2½	813 (900-2½)	2900-2½	813 (900-2½)	3080-3	993 (1000-3)

NE-3, 25 FEB 2021 to 25 MAR 2021

NE-3, 25 FEB 2021 to 25 MAR 2021

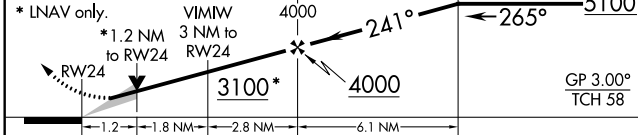
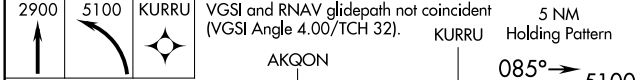
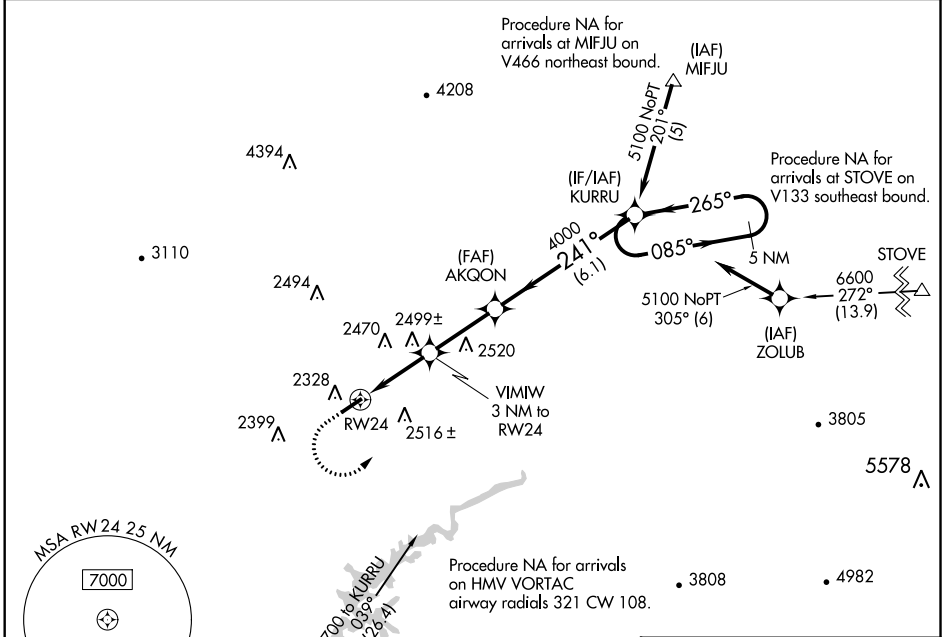
WAAS CH 77827 W24A	APP CRS 241°	Rwy Idg TDZE Apt Elev 4471 2087 2087
--	------------------------	--

RNAV (GPS) RWY 24

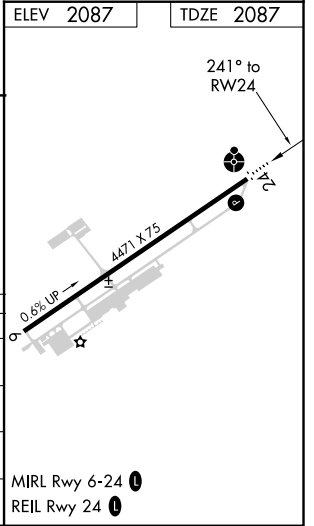
VIRGINIA HIGHLANDS (VJI)

	For uncompensated Baro-VNAV systems, LNAV/VNAV NA below -19°C (-2°F) or above 53°C (127°F). DME/DME RNP-0.3 NA. Inop table does not apply to LPV.	ODALS 	MISSED APPROACH: Climb to 2900 then climbing left turn to 5100 direct KURRU and hold.
		AWOS-3 128.125	

AWOS-3 128.125	TRI-CITY APP CON ★ 125.25 349.0	UNICOM 122.8 (CTAF) 0
--------------------------	---	---------------------------------



CATEGORY	A	B	C	D
LPV DA		2337-1	250 (300-1)	
LNAV/VNAV DA		2525-1¼	438 (500-1¼)	
LNAV MDA	2760-1	673 (700-1)	2760-1¾	673 (700-1¾)
CIRCLING	2860-1	773 (800-1)	2860-2¼	3080-3
			773 (800-2¼)	993 (1000-3)



NE-3, 25 FEB 2021 to 25 MAR 2021

NE-3, 25 FEB 2021 to 25 MAR 2021

WAAS CH 82411 W06A	APP CRS 061°	Rwy Idg TDZE Apt Elev	4471 2068 2087
--	------------------------	-----------------------------	---

RNAV (GPS) RWY 6

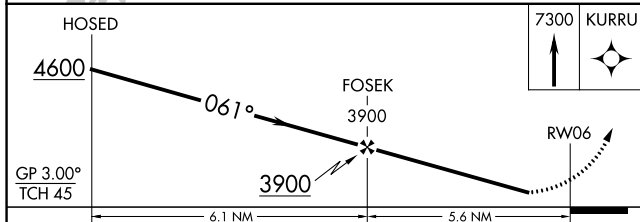
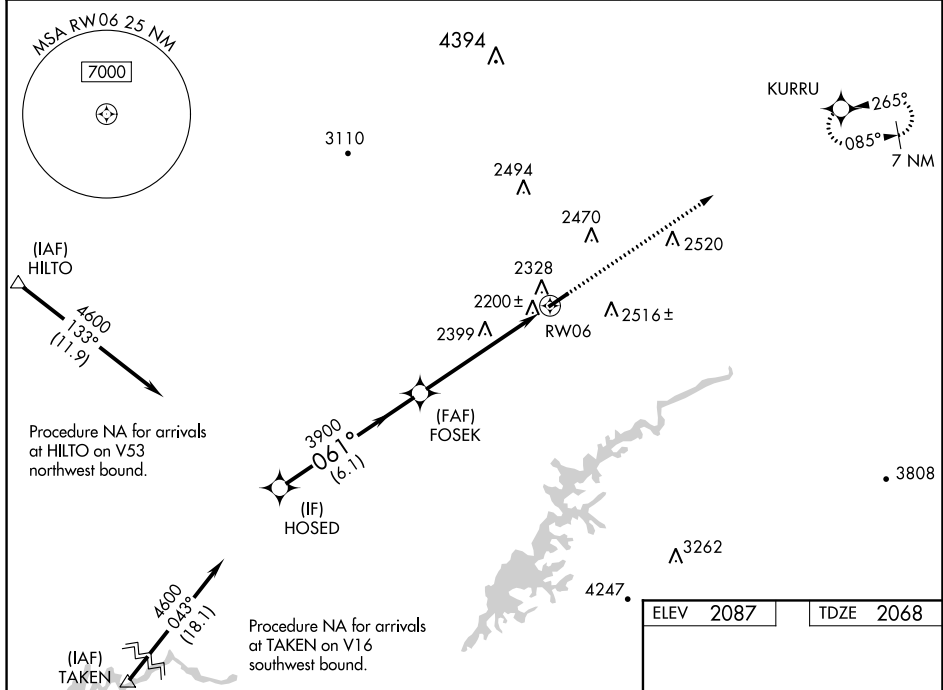
VIRGINIA HIGHLANDS (VJI)

RNP APCH.

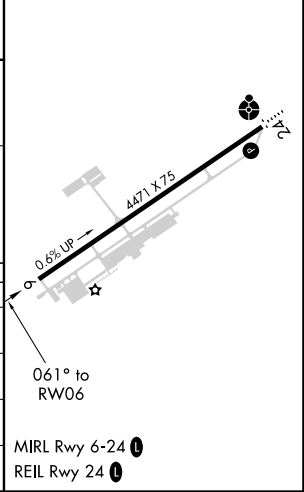
▼ Rwy 6 helicopter visibility reduction below 1 SM NA. For uncompensated Baro-VNAV systems,
▲ LNAV/VNAV NA below -19°C or above 54°C.

MISSED APPROACH:
 Climb to 7300 direct
 KURRU and hold,
 continue climb-in-hold
 to 7300.

AWOS-3 128.125	TRI-CITY APP CON ★ 125.25 349.0	UNICOM 122.8 (CTAF) 0
--------------------------	---	---------------------------------



ELEV	2087	TDZE	2068
------	------	------	------



CATEGORY	A	B	C	D
LPV DA	2443-1¼		375 (400-1¼)	
LNAV/VNAV DA	2489-1¼		421 (500-1¼)	
LNAV MDA	2660-1	592 (600-1)	2660-1¾	592 (600-1¾)
CIRCLING	2860-1	773 (800-1)	2860-2¼	3080-3
			773 (800-2¼)	993 (1000-3)

NE-3, 25 FEB 2021 to 25 MAR 2021

NE-3, 25 FEB 2021 to 25 MAR 2021