

WAAS CH 86937 W18A	APP CRS 183°	Rwy Idg TDZE Apt Elev	5999 654 654
--	------------------------	-----------------------------	---

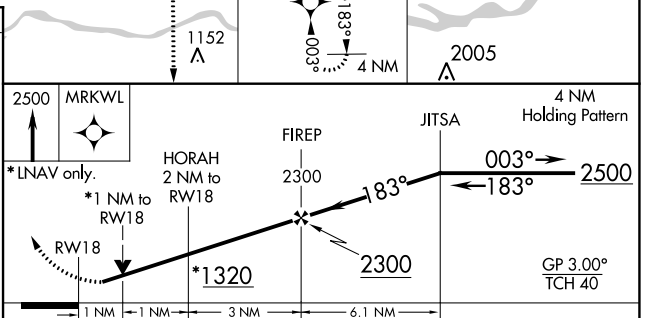
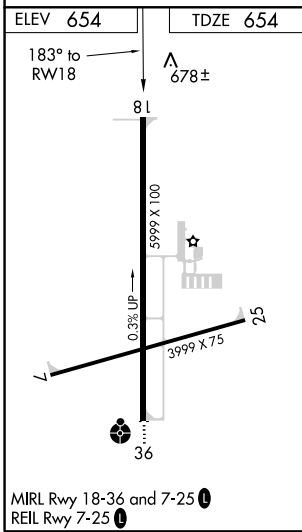
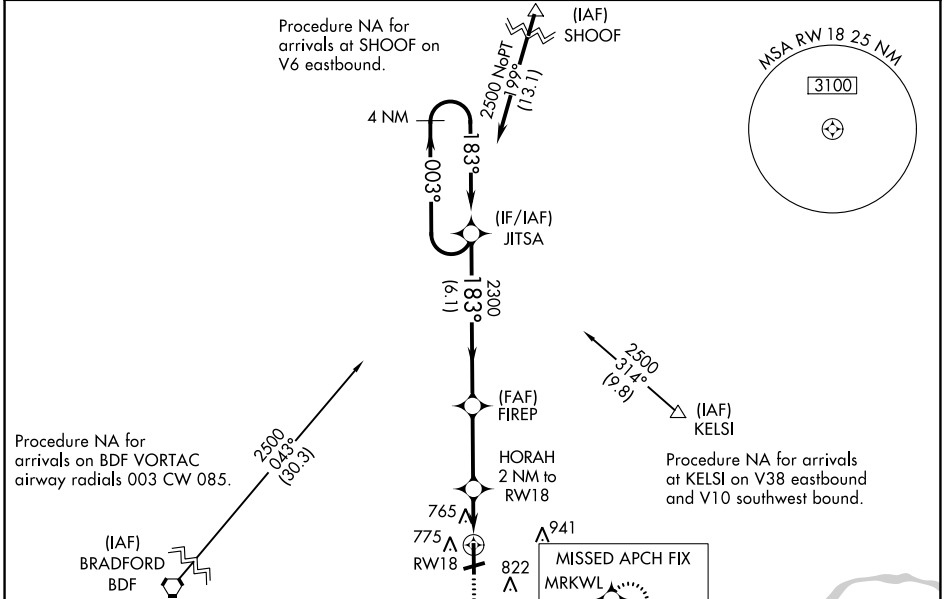
RNAV (GPS) RWY 18

ILLINOIS VALLEY RGNL-WALTER A DUNCAN FIELD (VYS)

⚠ DME/DME RNP-0.3 NA. When local altimeter setting not received, use Marshall County altimeter setting and increase all DA 62 feet and all MDA 80 feet, increase LNAV Cats C/D visibility to 1 $\frac{1}{8}$, Circling Cat C visibility to 2 and Circling Cat D visibility to 3. VDP and Baro-VNAV NA with Marshall County altimeter setting. Helicopter visibility reduction below $\frac{3}{4}$ SM NA.

MISSED APPROACH: Climb to 2500 direct MRKWL and hold.

AWOS-3 120.025	CHICAGO CENTER 123.75 259.1	UNICOM 123.0 (CTAF) 0
--------------------------	---------------------------------------	---------------------------------



CATEGORY	A	B	C	D
LPV DA		904-1	250 (300-1)	
LNAV/VNAV DA		926-1	272 (300-1)	
LNAV MDA		1020-1	366 (400-1)	
CIRCLING	1120-1 466 (500-1)	1240-1 586 (600-1)	1260-1 $\frac{3}{4}$ 606 (700-1 $\frac{3}{4}$)	1460-2 $\frac{1}{2}$ 806 (900-2 $\frac{1}{2}$)

EC-3, 05 NOV 2020 to 03 DEC 2020

EC-3, 05 NOV 2020 to 03 DEC 2020

WAAS CH 82037 W36A	APP CRS 003°	Rwy Idg TDZE 650 Apt Elev 654	5999
--	------------------------	---	-------------

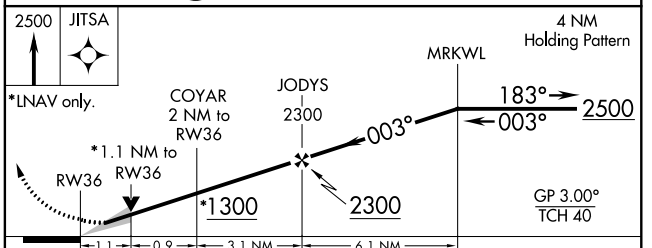
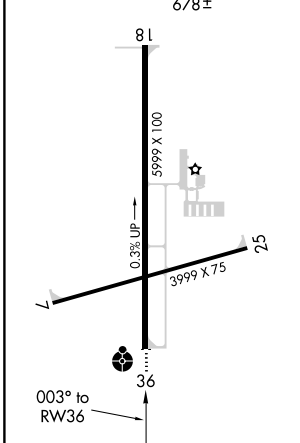
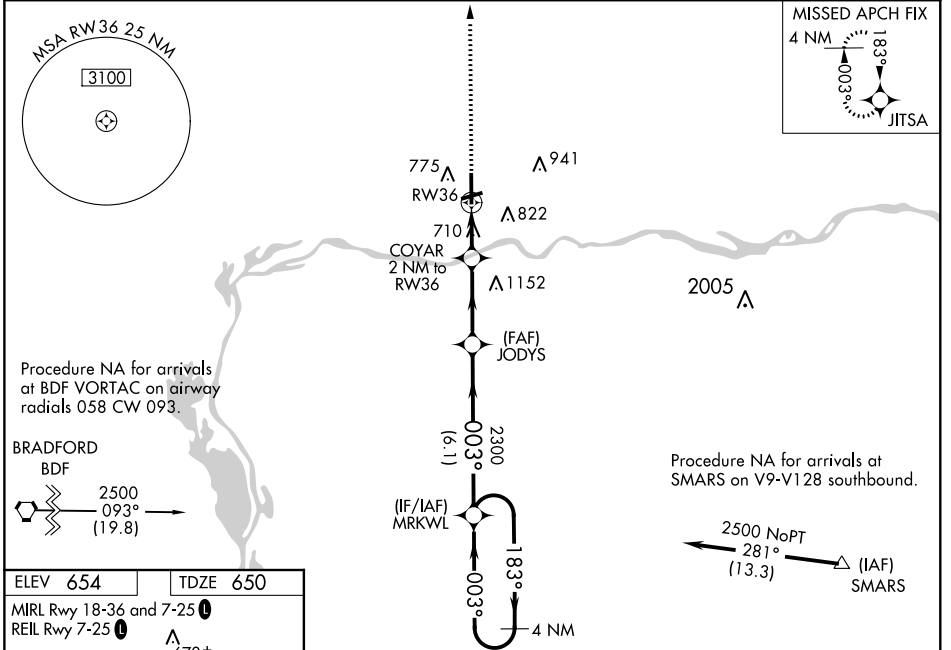
RNAV (GPS) RWY 36

ILLINOIS VALLEY RGNL-WALTER A DUNCAN FIELD (VYS)

▼ For uncompensated Baro-VNAV systems, LNAV/VNAV NA below -16°C (4°F) or above 54°C (130°F). DME/DME RNP-0.3 NA. When local altimeter setting not received, use Marshall County altimeter setting and increase all DA 62 feet and all MDA 80 feet; increase LNAV Cats C/D visibility to 1 1/8 miles, Circling Cat C visibility to 2 miles and Circling Cat D visibility to 3 miles. Inoperative table does not apply to LPV, LNAV/VNAV and LNAV. For inoperative ODALS when using Marshall County altimeter setting, inoperative table does not apply to LNAV Cats A/B; increase LNAV Cat D visibility to 1 3/8. VDP and Baro-VNAV NA with Marshall County altimeter setting.

ODALS ●	MISSED APPROACH: Climb to 2500 direct JITSA and hold.
------------	---

AWOS-3 120.025	CHICAGO CENTER 123.75 259.1	UNICOM 123.0 (CTAF)
--------------------------	---------------------------------------	-------------------------------



CATEGORY	A	B	C	D
LPV DA		900-1	250 (300-1)	
LNAV/VNAV DA		900-1	250 (300-1)	
LNAV MDA		1020-1	370 (400-1)	
CIRCLING	1120-1 466 (500-1)	1240-1 586 (600-1)	1260-1 3/4 606 (700-1 3/4)	1460-2 1/2 806 (900-2 1/2)

EC-3, 05 NOV 2020 to 03 DEC 2020

EC-3, 05 NOV 2020 to 03 DEC 2020