

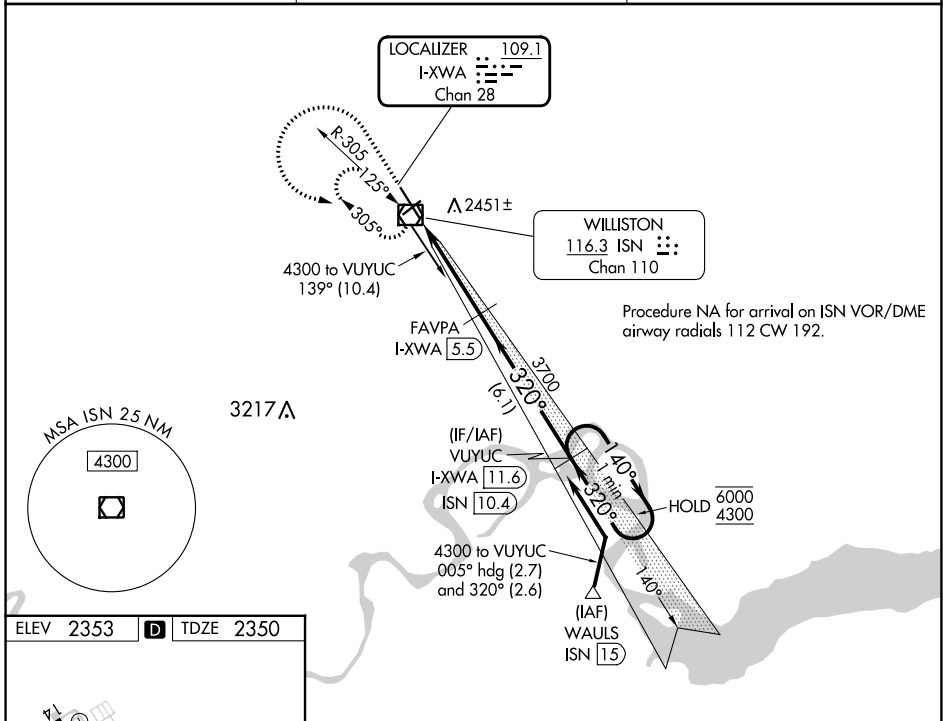
LOC/DME I-XWA 109.1 Chan 28	APP CRS 320°	Rwy ldg 7503 TDZE 2350 Apt Elev 2353
--	------------------------	---

ILS or LOC RWY 32

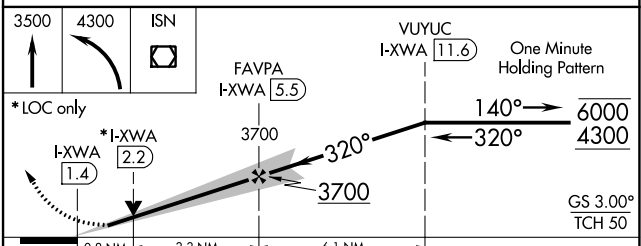
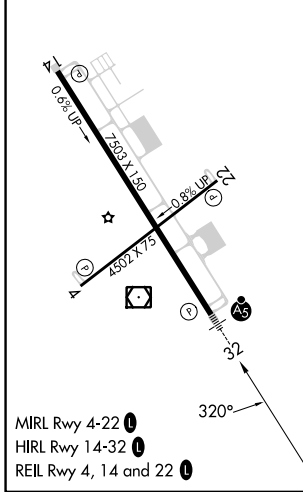
WILLISTON BASIN INTL (XWA)

DME required.		MALSR	MISSED APPROACH: Climb to 3500 then climbing left turn to 4300 direct ISN VOR/DME and hold, continue climb-in-hold to 4300.
▼ ▲ NA	For inop ALS, increase S-LOC 32 Cat C/D visibility to ½ SM.	AS	

ASOS 125.925	SALT LAKE CITY CENTER 126.85 305.2	UNICOM 122.8 (CTAF) 1
------------------------	--	---------------------------------



ELEV 2353	D	TDZE 2350
-----------	---	-----------



CATEGORY	A	B	C	D
S-ILS 32	2550-½		200 (200-½)	
S-LOC 32	2660-½		310 (400-½)	
<input checked="" type="checkbox"/> CIRCLING	2760-1 407 (500-1)	2820-1 467 (500-1)	2820-1½ 467 (500-1½)	2920-2 567 (600-2)

NC-1, 22 FEB 2024 to 21 MAR 2024

NC-1, 22 FEB 2024 to 21 MAR 2024

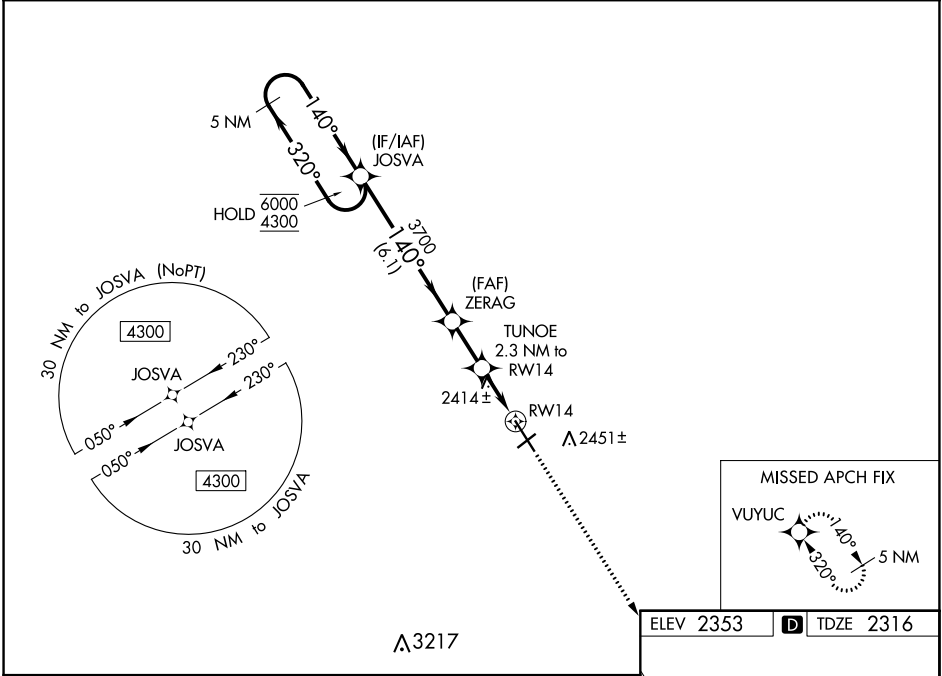
WAAS CH 40143 W14A	APP CRS 140°	Rwy Idg TDZE Apt Elev	7503 2316 2353
--	------------------------	-----------------------------	---

RNAV (GPS) RWY 14

WILLISTON BASIN INTL (XWA)

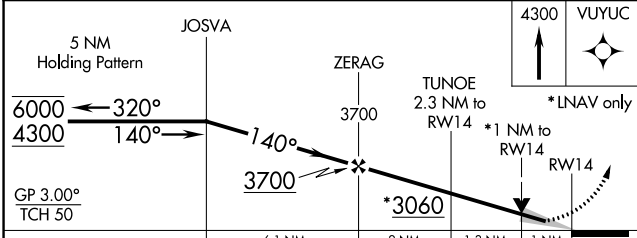
RNP APCH.	MISSED APPROACH: Climb to 4300 direct VUYUC and hold.
<p>▼</p> <p>▲</p> <p>For uncompensated Baro-VNAV systems, LNAV/VNAV NA below -19°C or above 54°C.</p>	

ASOS 125.925	SALT LAKE CITY CENTER 126.85 305.2	UNICOM 122.8 (CTAF) 0
------------------------	--	---------------------------------



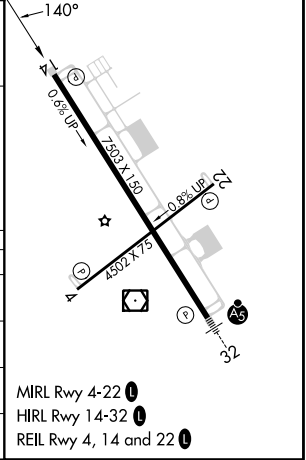
NC-1, 22 FEB 2024 to 21 MAR 2024

NC-1, 22 FEB 2024 to 21 MAR 2024



ELEV 2353	D TDZE 2316
-----------	--------------------

CATEGORY	A	B	C	D
LPV DA		2516-3/4	200 (200-3/4)	
LNAV/VNAV DA		2577-7/8	261 (300-7/8)	
LNAV MDA		2680-1	364 (400-1)	
C CIRCLING	2760-1 407 (500-1)	2820-1 467 (500-1)	2820-1 1/2 467 (500-1 1/2)	2920-2 567 (600-2)



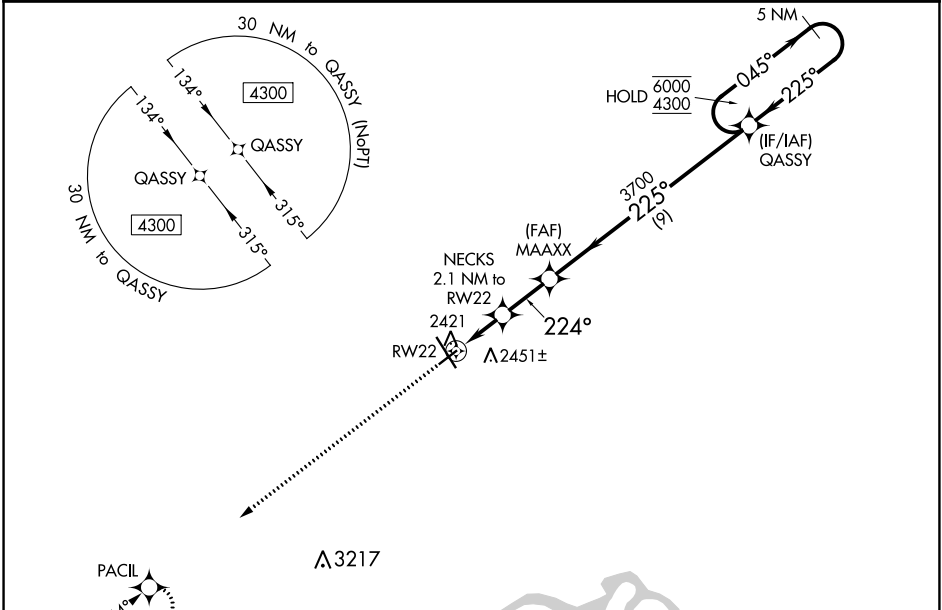
WAAS CH 93943 W22A	APP CRS 224°	Rwy Idg TDZE Apt Elev	4502 2339 2356
--	------------------------	-----------------------------	---

RNAV (GPS) RWY 22

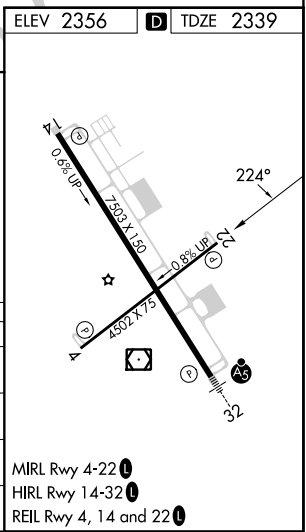
WILLISTON BASIN INTL (XWA)

RNP APCH-GPS.	MISSED APPROACH: Climb to 4300 direct PACIL and hold.
 For uncompensated Baro-VNAV systems, LNAV/VNAV NA below -19°C or above 54°C.	

ASOS 125.925	SALT LAKE CITY CENTER 126.85 305.2	UNICOM 122.8 (CTAF)
------------------------	--	-------------------------------



4300 PACIL 	NECKS 2.1 NM to RWY 22 2421	MAAXX 3700	QASSY 5 NM Holding Pattern 6000 4300 GP 3.00° TCH 40
*LNAV only	*1.2 NM to RWY 22	3020*	
	1.2 NM	0.9 NM	2.1 NM
CATEGORY	A	B	C
LPV DA		2539-1	200 (200-1)
LNAV/VNAV DA		2589-1	250 (300-1)
LNAV MDA	2740-1	401 (400-1)	2740-1 1/8 401 (400-1 1/8)
CIRCLING	2760-1 404 (500-1)	2820-1 464 (500-1)	2820-1 1/2 464 (500-1 1/2) 2920-2 564 (600-2)



NC-1, 22 FEB 2024 to 21 MAR 2024

NC-1, 22 FEB 2024 to 21 MAR 2024

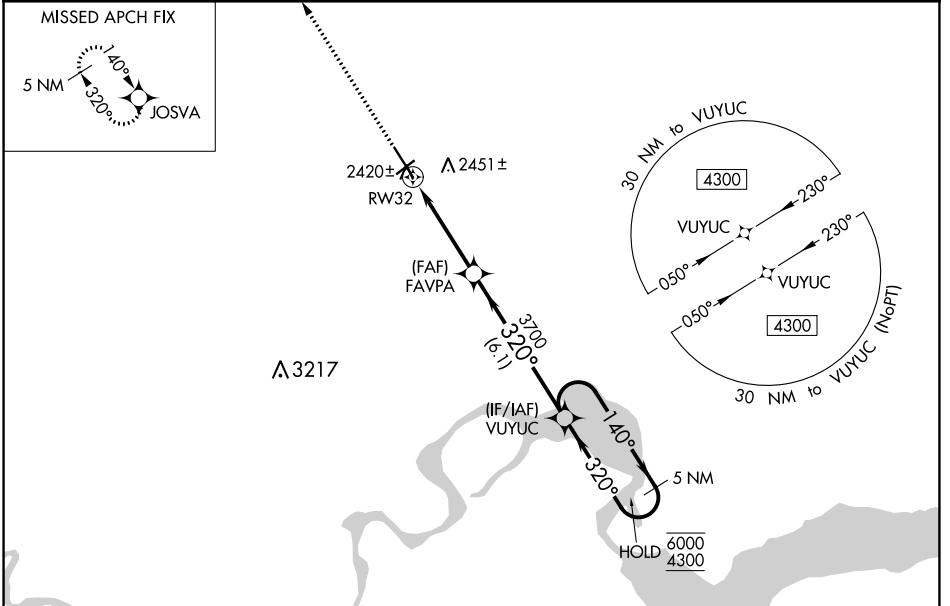
WAAS CH 78043 W32A	APP CRS 320°	Rwy Idg 7503 TDZE 2350 Apt Elev 2353
--	------------------------	---

RNAV (GPS) RWY 32

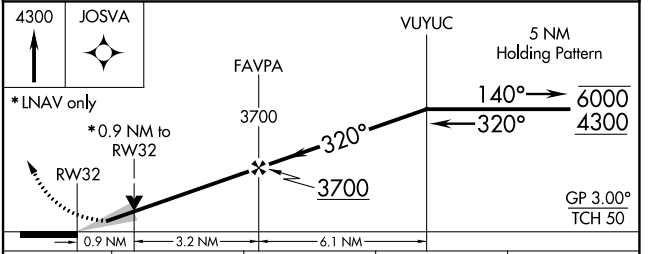
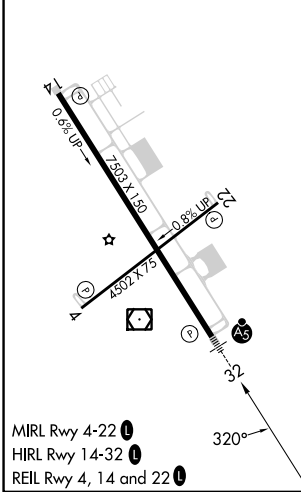
WILLISTON BASIN INTL (XWA)

RNP APCH.	MALSR	MISSED APPROACH: Climb to 4300 direct JOSVA and hold.
<p>For uncompensated Baro-VNAV systems, LNAV/VNAV NA below -19°C or above 54°C. For inop ALS, increase LNAV/VNAV all Cats visibility to ¼ SM.</p>		

ASOS 125.925	SALT LAKE CITY CENTER 126.85 305.2	UNICOM 122.8 (CTAF) ①
------------------------	--	---------------------------------



ELEV 2353	D	TDZE 2350
-----------	----------	-----------



CATEGORY	A	B	C	D
LPV DA		2550-½	200 (200-½)	
LNAV/VNAV DA		2600-½	250 (300-½)	
LNAV MDA		2680-½	330 (400-½)	
C CIRCLING	2760-1 407 (500-1)	2820-1 467 (500-1)	2820-1½ 467 (500-1½)	2920-2 567 (600-2)

NC-1, 22 FEB 2024 to 21 MAR 2024

NC-1, 22 FEB 2024 to 21 MAR 2024

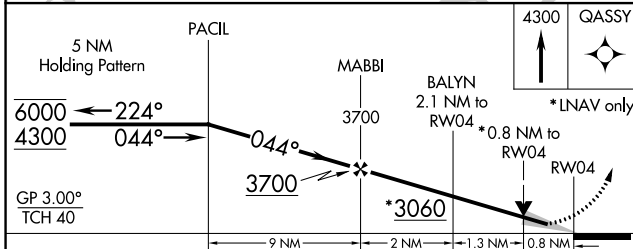
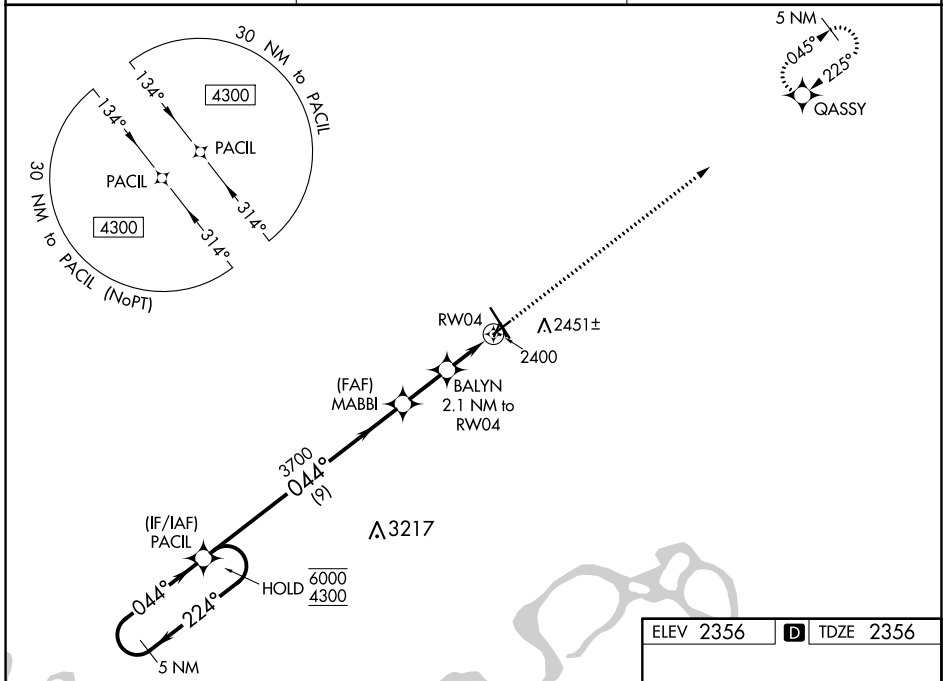
WAAS CH 49243 W04A	APP CRS 044°	Rwy Idg TDZE Apt Elev	4502 2356 2356
--	------------------------	-----------------------------	---

RNAV (GPS) RWY 4

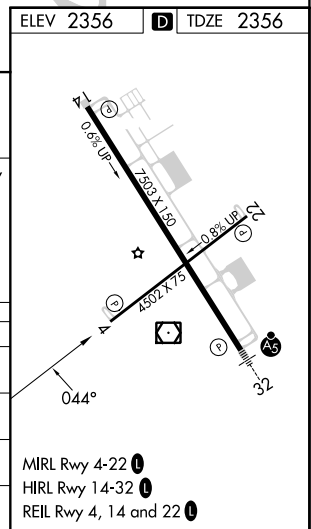
WILLISTON BASIN INTL (XWA)

RNP APCH-GPS.	MISSED APPROACH: Climb to 4300 direct QASSY and hold.
<p>▼</p> <p>▲</p> <p>For uncompensated Baro-VNAV systems, LNAV/VNAV NA below -19°C or above 54°C.</p>	

ASOS 125.925	SALT LAKE CITY CENTER 126.85 305.2	UNICOM 122.8 (CTAF) 1
------------------------	--	--



CATEGORY	A	B	C	D
LPV DA		2556-1	200 (200-1)	
LNAV/VNAV DA		2606-1	250 (300-1)	
LNAV MDA		2660-1	304 (400-1)	
C CIRCLING	2760-1 404 (500-1)	2820-1 464 (500-1)	2820-1½ 464 (500-1½)	2920-2 564 (600-2)



NC-1, 22 FEB 2024 to 21 MAR 2024

NC-1, 22 FEB 2024 to 21 MAR 2024

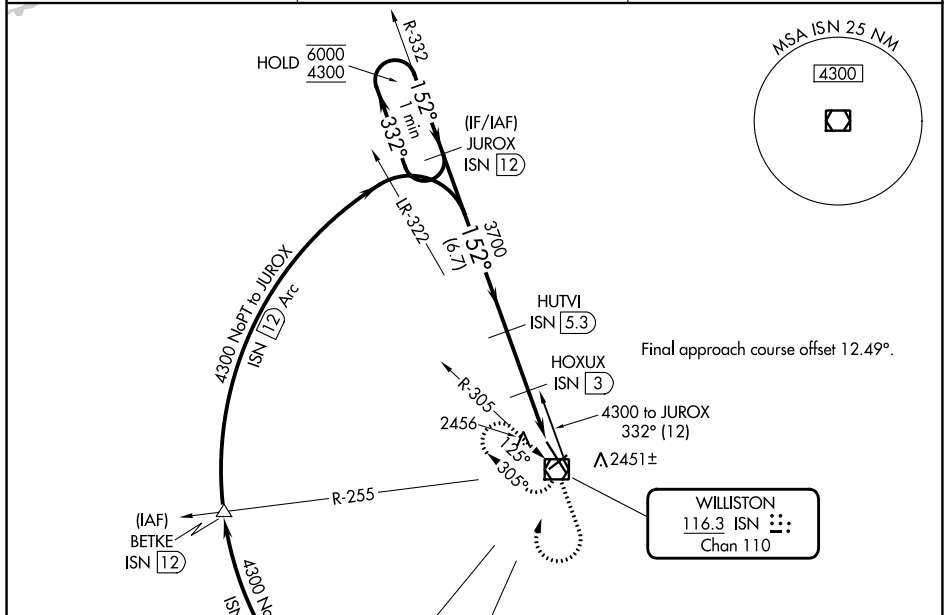
VOR/DME ISN 116.3 Chan 110	APP CRS 152°	Rwy Idg 7503 TDZE 2318 Apt Elev 2356
--	------------------------	---

VOR RWY 14

WILLISTON BASIN INTL (XWA)

DME required. ▼ ▲	MISSED APPROACH: Climb to 4300 then climbing right turn to 4300 direct ISN VOR/DME and hold
-------------------------	---

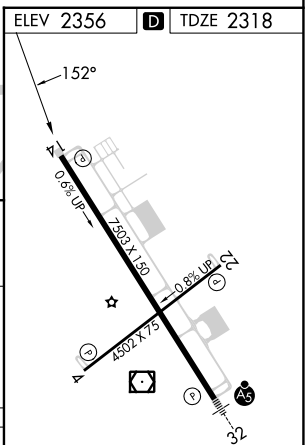
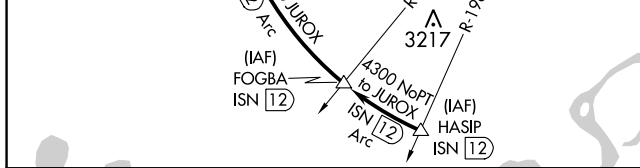
ASOS 125.925	SALT LAKE CITY CENTER 126.85 305.2	UNICOM 122.8 (CTAF) 0
------------------------	--	--



NC-1, 22 FEB 2024 to 21 MAR 2024

NC-1, 22 FEB 2024 to 21 MAR 2024

ELEV 2356	D	TDZE 2318
-----------	---	-----------



One Minute Holding Pattern	JUROX ISN 12	HUTVI ISN 5.3	4300	4300	ISN
6000 ← 332°					
4300 → 152°					
			3700		
			2800		

CATEGORY	A	B	C	D
S-14	2720-1	402 (400-1)	2720-1½	402 (400-1½)
CIRCLING	2760-1 404 (500-1)	2820-1 464 (500-1)	2820-1½ 464 (500-1½)	2920-2 564 (600-2)

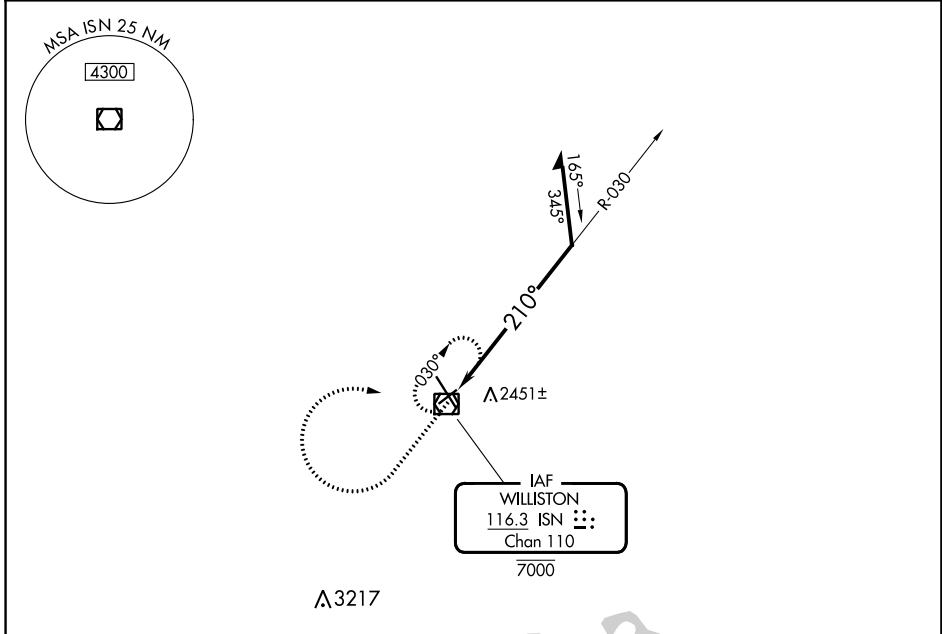
MIRL Rwy 4-22 **0**
 HIRL Rwy 14-32 **0**
 REIL Rwy 4, 14 and 22 **0**

VOR/DME ISN 116.3 Chan 110	APP CRS 210°	Rwy Idg TDZE Apt Elev	4502 2339 2356
--	------------------------	-----------------------------	---

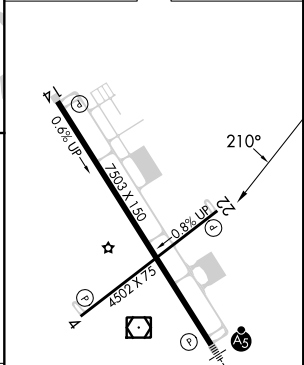
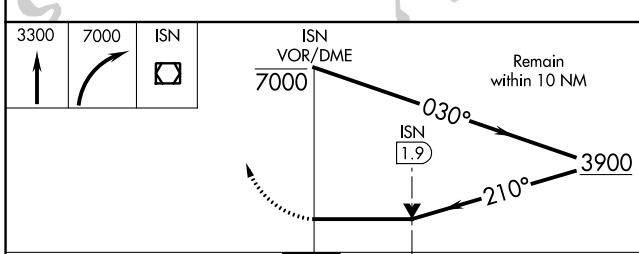
VOR RWY 22
WILLISTON BASIN INTL (XWA)

⚠ MISSED APPROACH: Climb to 3300 then climbing right turn to 7000 direct ISN VOR/DME and hold, continue climb-in-hold to 7000.

ASOS 125.925	SALT LAKE CITY CENTER 126.85 305.2	UNICOM 122.8 (CTAF)
------------------------	--	-------------------------------



ELEV 2356	D TDZE 2339
-----------	--------------------



CATEGORY	A	B	C	D
S-22	2760-1	421 (500-1)	2760-1¼	421 (500-1¼)
C CIRCLING	2760-1 404 (500-1)	2820-1 464 (500-1)	2820-1½ 464 (500-1½)	2920-2 564 (600-2)

MIRL Rwy 4-22 **⓪**
HIRL Rwy 14-32 **⓪**
REIL Rwy 4, 14 and 22 **⓪**

NC-1, 22 FEB 2024 to 21 MAR 2024

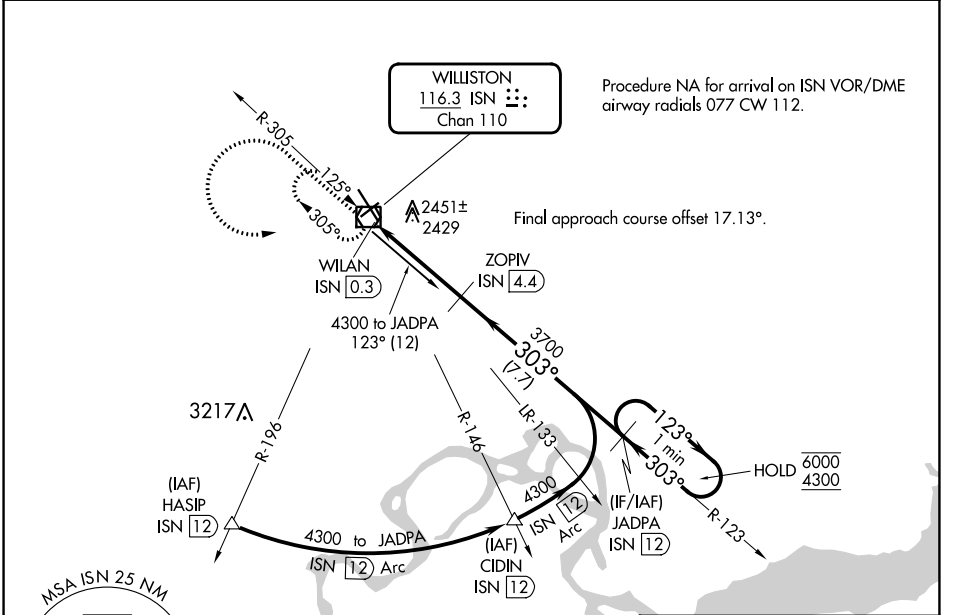
NC-1, 22 FEB 2024 to 21 MAR 2024

VOR/DME ISN 116.3 Chan 110	APP CRS 303°	Rwy Idg TDZE Apt Elev	7503 2350 2353
--	------------------------	-----------------------------	---

VOR RWY 32

WILLISTON BASIN INTL (XWA)

DME required.		MALSR 	MISSED APPROACH: Climb to 4300 then climbing left turn to 4300 direct ISN VOR/DME and hold
	For inop ALS, increase S-32 Cats C/D visibility to 1 1/8 SM.		
ASOS 125.925	SALT LAKE CITY CENTER 126.85 305.2	UNICOM 122.8 (CTAF)	



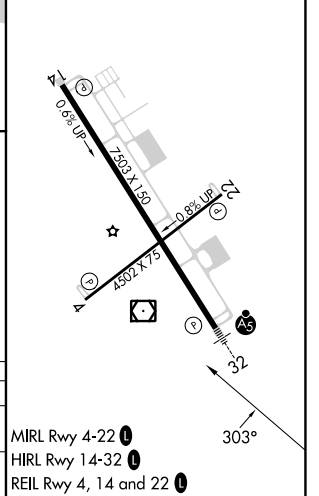
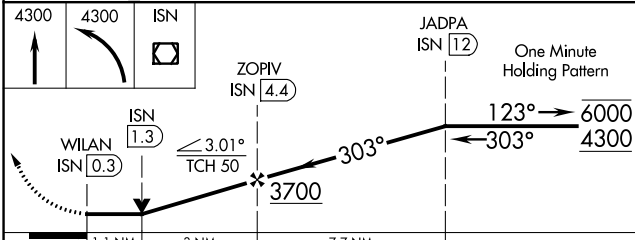
Procedure NA for arrival on ISN VOR/DME airway radials 077 CW 112.

Final approach course offset 17.13°.

NC-1, 22 FEB 2024 to 21 MAR 2024

NC-1, 22 FEB 2024 to 21 MAR 2024

ELEV 2353		TDZE 2350
-----------	--	-----------



CATEGORY	A	B	C	D
S-32	2740-1/2	390 (400-1/2)	2740-3/4	390 (400-3/4)
CIRCLING	2760-1 407 (500-1)	2820-1 467 (500-1)	2820-1 1/2 467 (500-1 1/2)	2920-2 567 (600-2)

MIRL Rwy 4-22

HIRL Rwy 14-32

REIL Rwy 4, 14 and 22