

NIITZ THREE DEPARTURE (RNAV) (NIITZ3.NIITZ) 27JAN22

NIITZ THREE DEPARTURE (RNAV) 22027

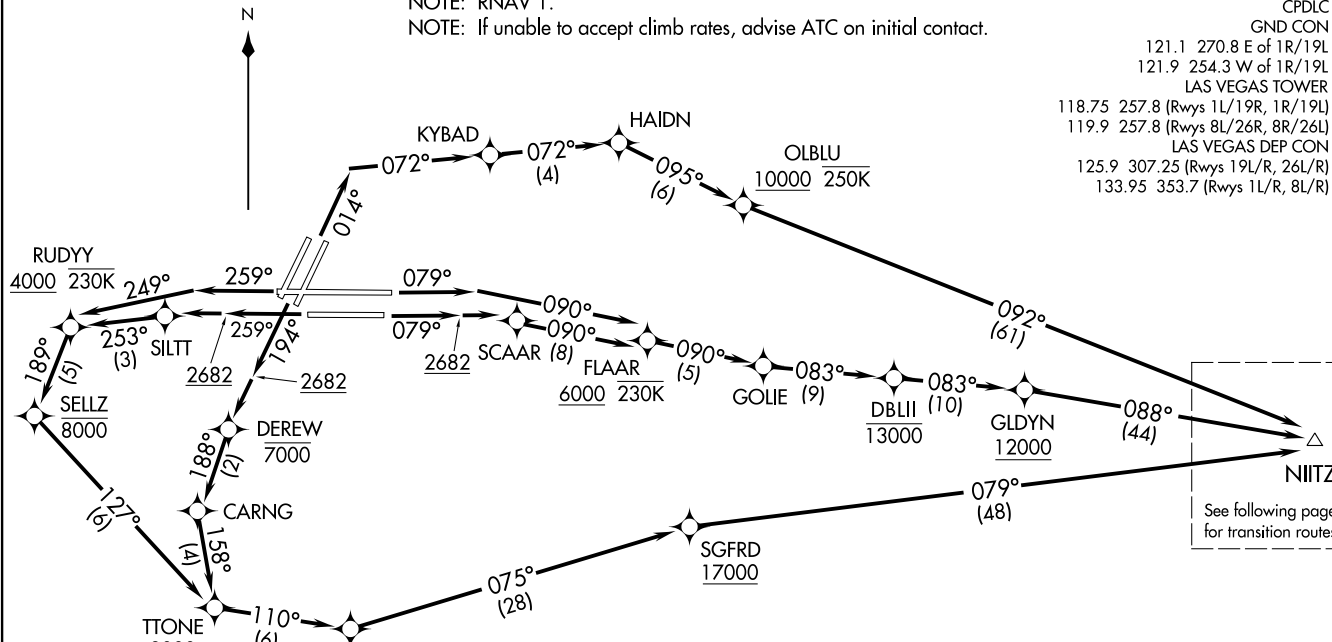
AT-652 (FAA) Departure Routes

HARRY REID INTL (LAS) LAS VEGAS, NEVADA

**TOP ALTITUDE:
FL190**

NOTE: RADAR required for non-GPS equipped aircraft.
 NOTE: Turbojets only.
 NOTE: DME/DME/IRU or GPS required.
 NOTE: RNAV 1.
 NOTE: If unable to accept climb rates, advise ATC on initial contact.

D-ATIS 132.4
 CLNC DEL 118.0
 CPDLC
 GND CON 121.1 270.8 E of 1R/19L
 121.9 254.3 W of 1R/19L
 LAS VEGAS TOWER 118.75 257.8 (Rwys 1L/19R, 1R/19L)
 119.9 257.8 (Rwys 8L/26R, 8R/26L)
 LAS VEGAS DEP CON 125.9 307.25 (Rwys 19L/R, 26L/R)
 133.95 353.7 (Rwys 1L/R, 8L/R)



TAKEOFF MINIMUMS

Rwys 1L/R: Standard with minimum climb of 500' per NM to 2682 then 280' per NM to 4800.
 Rwys 8L/R: Standard with minimum climb of 500' per NM to 2682.
 Rwys 19L/R: Standard with minimum climb of 500' per NM to 2682 then 270' per NM to 6200.
 Rwys 26L/R: Standard with minimum climb of 500' per NM to 2682 then 240' per NM to 5000.

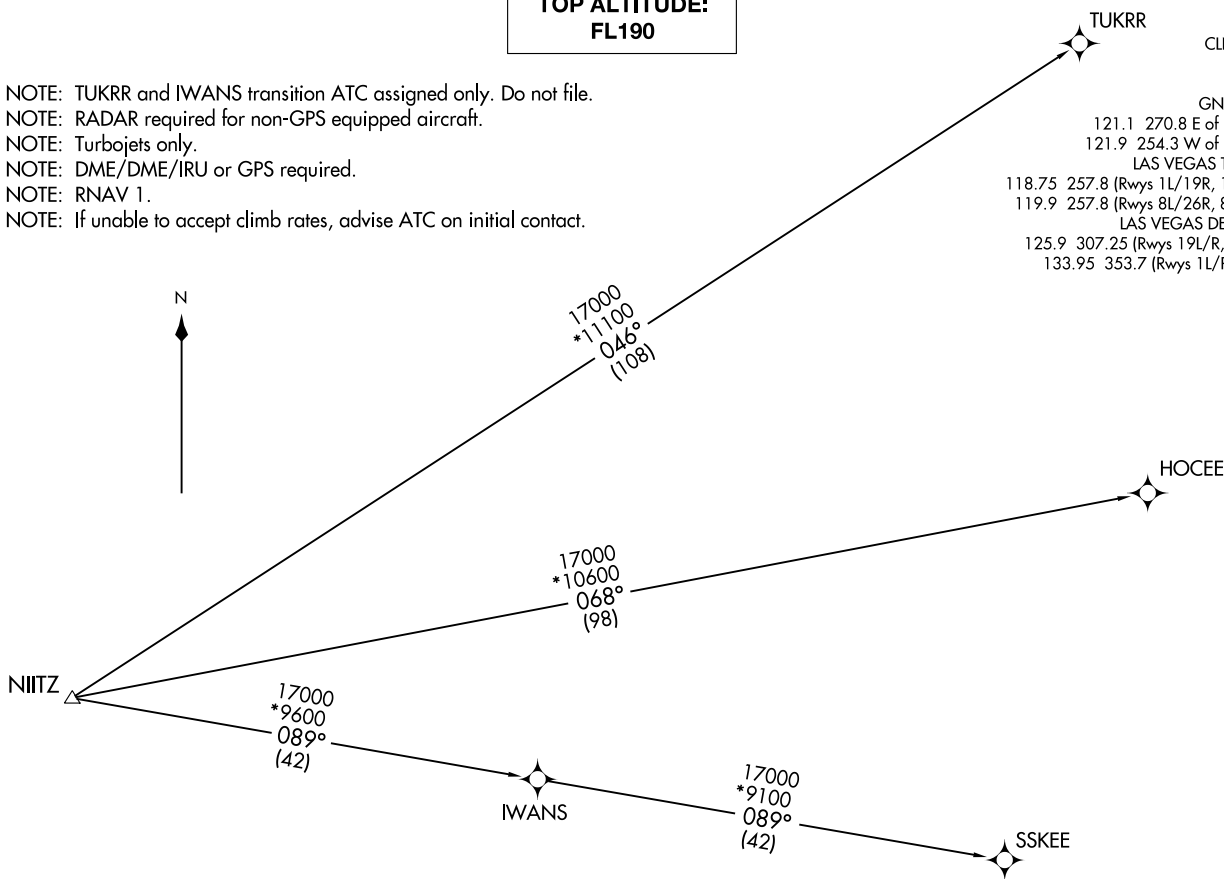
NOTE: Chart not to scale.

(CONTINUED ON FOLLOWING PAGE)

**TOP ALTITUDE:
FL190**

- NOTE: TUKRR and IWANS transition ATC assigned only. Do not file.
- NOTE: RADAR required for non-GPS equipped aircraft.
- NOTE: Turbojets only.
- NOTE: DME/DME/IRU or GPS required.
- NOTE: RNAV 1.
- NOTE: If unable to accept climb rates, advise ATC on initial contact.

D-ATIS 132.4
 CLNC DEL 118.0
 CPDLC
 GND CON
 121.1 270.8 E of 1R/19L
 121.9 254.3 W of 1R/19L
 LAS VEGAS TOWER
 118.75 257.8 (Rwys 1L/19R, 1R/19L)
 119.9 257.8 (Rwys 8L/26R, 8R/26L)
 LAS VEGAS DEP CON
 125.9 307.25 (Rwys 19L/R, 26L/R)
 133.95 353.7 (Rwys 1L/R, 8L/R)



NIITZ THREE DEPARTURE (RNAV) Transition Routes
 (NIITZ3.NIITZ) 27JAN22
 LAS VEGAS, NEVADA
 HARRY REID INTL (LAS)

(NIITZ3.NIITZ) 22027
 NIITZ THREE DEPARTURE (RNAV) Transition Routes
 AL-662 (FAA)
 HARRY REID INTL (LAS)
 LAS VEGAS, NEVADA

NOTE: Chart not to scale.

(NARRATIVE ON FOLLOWING PAGE)