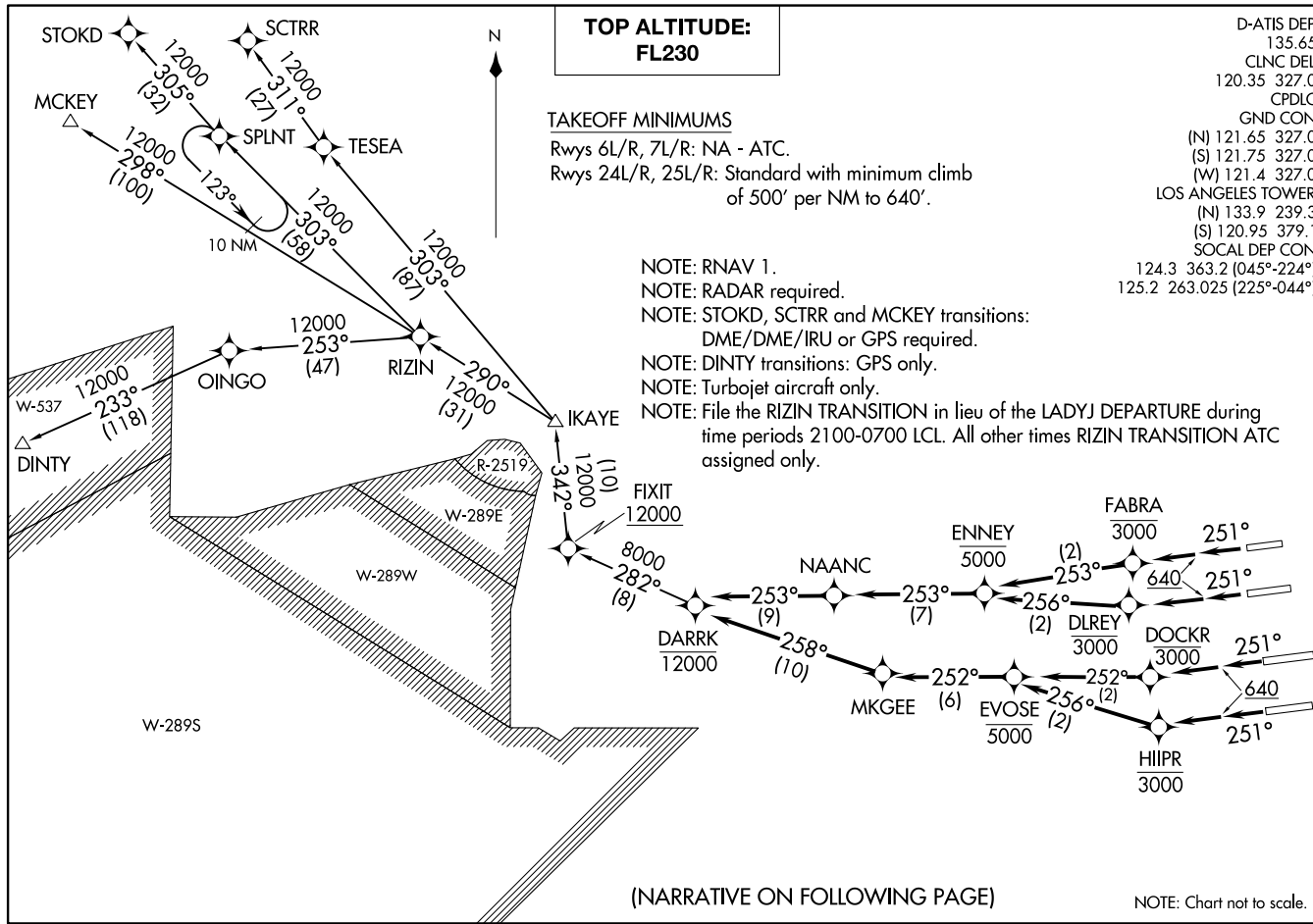


DARRK THREE DEPARTURE (RNAV)
(DARRK3.DARRK) 100CTT9

LOS ANGELES, CALIFORNIA
LOS ANGELES INTL (LAX)



(DARRK3.DARRK) 19288
DARRK THREE DEPARTURE (RNAV)

LOS ANGELES INTL (LAX)
LOS ANGELES, CALIFORNIA

AL-237 (FAA)



DEPARTURE ROUTE DESCRIPTION

TAKEOFF RUNWAY 24L: Climb heading 251° to 640, then climb direct to cross DLREY at or below 3000, then on track 256° to cross ENNEY at or below 5000, then on track 253° to NAANC, then on track 253° to cross DARRK at or below 12000, thence. . . .

TAKEOFF RUNWAY 24R: Climb heading 251° to 640, then climb direct to cross FABRA at or below 3000, then on track 253° to cross ENNEY at or below 5000, then on track 253° to NAANC, then on track 253° to cross DARRK at or below 12000, thence. . . .

TAKEOFF RUNWAY 25L: Climb heading 251° to 640, then climb direct to cross HIIPR at or below 3000, then on track 256° to cross EVOSE at or below 5000, then on track 252° to MKGEE, then on track 258° to cross DARRK at or below 12000, thence. . . .

TAKEOFF RUNWAY 25R: Climb heading 251° to 640, then climb direct to cross DOCKR at or below 3000, then on track 252° to cross EVOSE at or below 5000, then on track 252° to MKGEE, then on track 258° to cross DARRK at or below 12000, thence. . . .

. . . .on (transition) maintain FL230. Expect filed altitude 5 minutes after departure.

DINTY TRANSITION (DARRK3.DINTY)

MCKEY TRANSITION (DARRK3.MCKEY)

RIZIN TRANSITION (DARRK3.RIZIN)

SCTRR TRANSITION (DARRK3.SCTRR)

STOKD TRANSITION (DARRK3.STOKD)

SW-3, 22 FEB 2024 to 21 MAR 2024

SW-3, 22 FEB 2024 to 21 MAR 2024