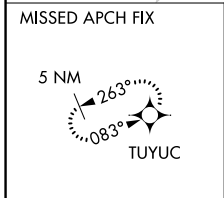
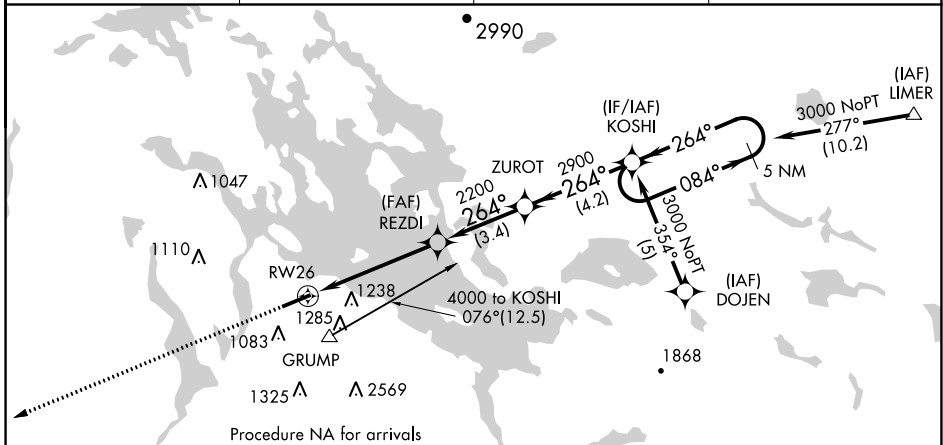


APP CRS	Rwy Idg	<b>5286</b>
<b>264°</b>	TDZE	<b>533</b>
	Apt Elev	<b>545</b>

# RNAV (GPS) RWY 26

LACONIA MUNI (LCI)

RNP APCH - GPS			MISSED APPROACH: Climb to 4400 direct TUYUC and hold, continue climb-in-hold to 4400.
<p>▼ Rwy 26 helicopter visibility reduction below 1 SM NA. If local altimeter setting not received, use Concord altimeter setting and increase all MDAs 80 feet. Circling NA south of Rwy 8-26.</p> <p>▲ Straight-in Rwy 26 NA at night, Circling Rwy 26 NA at night.</p>			
AWOS-3PT	BOSTON APP CON	CLNC DEL	UNICOM
<b>133.525</b>	<b>134.75 254.25</b>	<b>119.85</b>	<b>123.0 (CTAF) 0</b>



Procedure NA for arrivals at GRUMP on V496 northwest bound and V322 southwest bound.

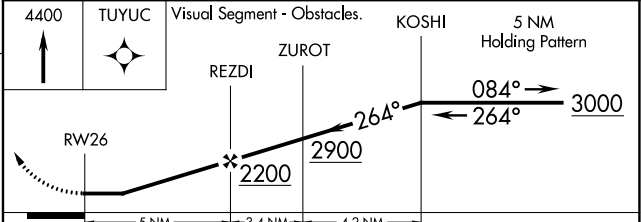
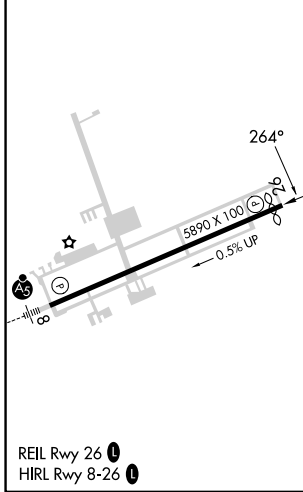
▲ 1481±

4000 to DOJEN  
060° (30)

ELEV 545	<b>D</b>	TDZE 533
----------	----------	----------

CONCORD CON

Procedure NA for arrival at CON VOR/DME on V322 southwest bound and V93 westbound.



CATEGORY	A	B	C	D
LNAV MDA	1420-1¼ 875 (900-1¼)	887 (900-1¼)	1420-2¾ 887 (900-2¾)	1420-3 887 (900-3)
<b>C</b> CIRCLING	1420-1¼ 875 (900-1¼)	1600-1½ 1055 (1100-1½)	2160-3 1615 (1700-3)	2860-3 2315 (2400-3)

NE-1, 22 FEB 2024 to 21 MAR 2024

NE-1, 22 FEB 2024 to 21 MAR 2024