

WAAS CH 65799 W06A	APP CRS 057°	Rwy Idg TDZE Apt Elev	5000 1212 1212
--	------------------------	-----------------------------	---

RNAV (GPS) RWY 6

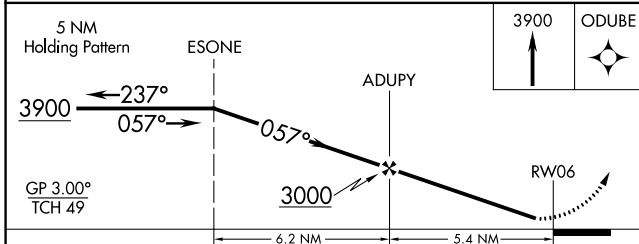
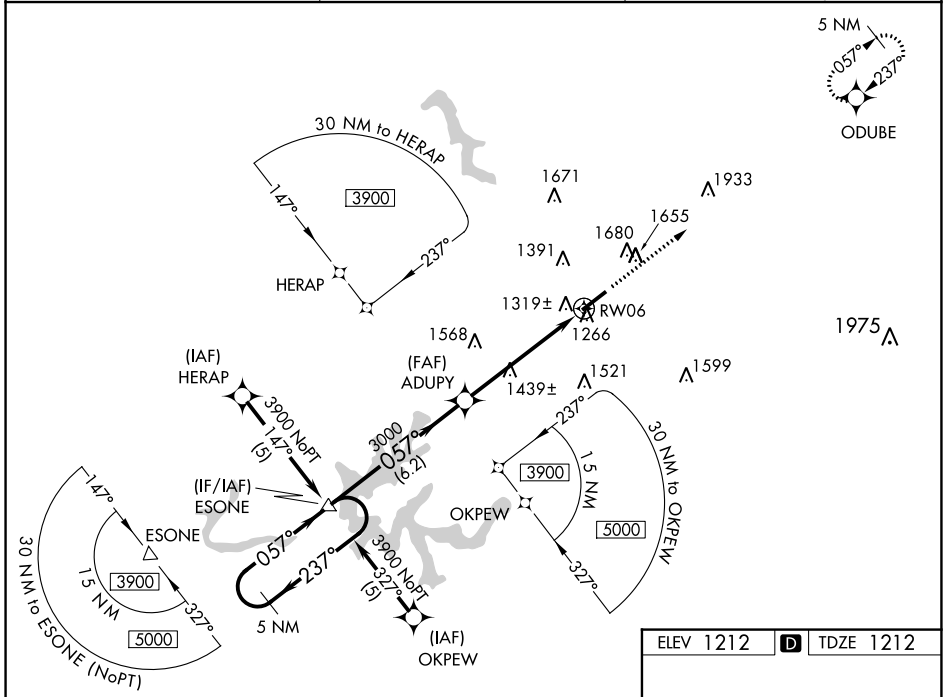
LONDON/CORBIN/MAGEE (LOZ)

RNP APCH

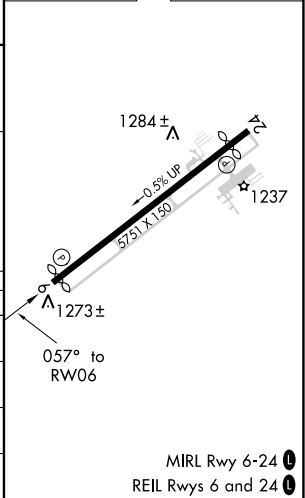
▼ Visibility reduction by helicopters NA. When local altimeter setting not received, use Somerset altimeter setting: increase LPV DA to 1566 feet and visibility all Cats 1/4 SM; increase LNAV/VNAV DA to 1702 feet and visibility all Cats 1/2 SM; increase all MDAs 100 feet and LNAV Cat C visibility 1/4 SM, Cat D visibility 1/2 SM, and Circling Cat C/D visibility 1/4 SM. For uncompensated Baro-VNAV systems, LNAV/VNAV NA below -17° C or above 46° C. Baro-VNAV and VDP NA when using Somerset altimeter setting.

MISSED APPROACH:
Climb to 3900 direct
ODUBE and hold.

ASOS 119.075	INDIANAPOLIS CENTER 124.625 371.925	UNICOM 123.0 (CTAF) 0
------------------------	---	---------------------------------



ELEV 1212	D	TDZE 1212
-----------	----------	-----------



CATEGORY	A	B	C	D
LPV DA		1466-1	254 (300-1)	
LNAV/VNAV DA		1602-1 1/4	390 (400-1 1/4)	
LNAV MDA	1720-1	508 (600-1)	1720-1 1/2	508 (600-1 1/2)
CIRCLING	1780-1 568 (600-1)	2040-1 1/4 828 (900-1 1/2)	2040-2 1/2 828 (900-2 1/2)	2040-2 3/4 828 (900-2 3/4)

MIRL Rwy 6-24 **0**
REIL Rws 6 and 24 **0**

SE-1, 22 FEB 2024 to 21 MAR 2024

SE-1, 22 FEB 2024 to 21 MAR 2024