

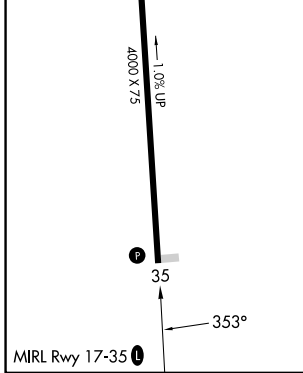
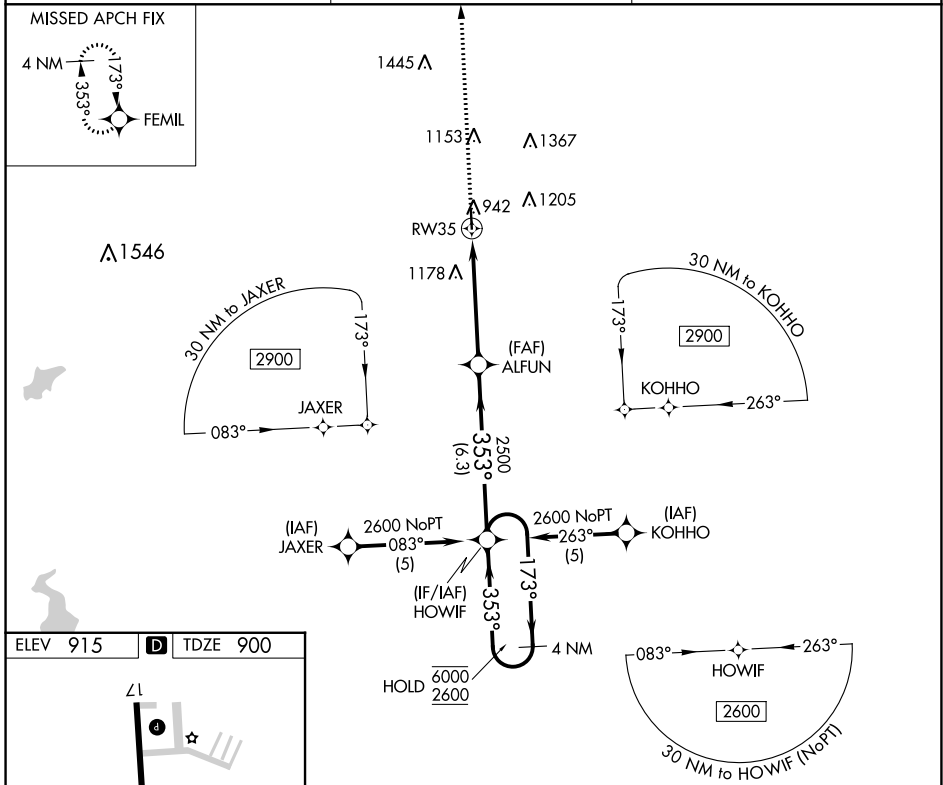
APP CRS	Rwy Idg	<b>4000</b>
<b>353°</b>	TDZE	<b>900</b>
	Apt Elev	<b>915</b>

# RNAV (GPS) RWY 35

LAWRENCE SMITH MEML (L.R.Y)

RNP APCH.	MISSED APPROACH: Climb to 3000 direct FEMIL and hold.
<p>Procedure NA at night.</p> <p>Rwy 35 helicopter visibility reduction below 1 SM NA.</p>	

AWOS-3PT <b>119.975</b>	KANSAS CITY CENTER <b>125.55 327.0</b>	UNICOM <b>123.0</b> (CTAF) <b>0</b>
----------------------------	---	--



3000	FEMIL	VGSI and descent angles not coincident (VGSI Angle 3.00/TCH 47).	
		HOWIF	4 NM Holding Pattern
	RW35	ALFUN	6000 / 2600
		3.04° TCH 40	353° / 173°
		2500	
		4.9 NM	6.3 NM
CATEGORY	A	B	C
LNAV MDA	1380-1	480 (500-1)	1380-1 3/8 480 (500-1 3/8)
CIRCLING	1400-1 485 (500-1)	1460-1 545 (600-1)	1520-1 3/4 605 (700-1 3/4)
			NA

NC-3, 22 FEB 2024 to 21 MAR 2024

NC-3, 22 FEB 2024 to 21 MAR 2024