

ALTUS, OKLAHOMA

22195

# RNAV (GPS)-A

APCH CRS <b>215°</b>	Rwy Idg TDZE Arprt Elev	<b>N/A</b> <b>N/A</b> <b>1382</b>
-------------------------	-------------------------------	---

AL-482 (USAF)

ALTUS AFB (KLTS)

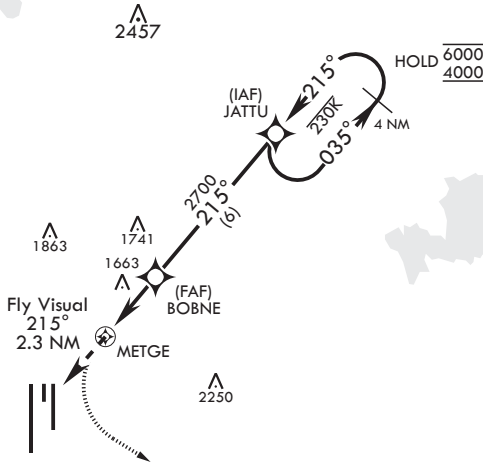
RNP APCH. DME/DME RNP 0.3 NA

MISSED APPROACH: Climb to 2200, then climbing left turn to 4000 direct OLIRY and hold.

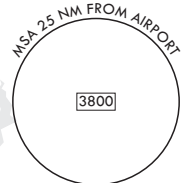
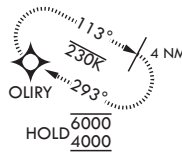
ATC RADAR REQUIRED

◀ Circling NA W of Rwy 18R-36L.

ATIS ★ <b>109.8 273.5</b>	FORT WORTH CENTER <b>133.5 350.35</b>	APP CON <b>125.1 353.7</b>	TOWER ★ <b>119.65 254.4</b>	GND CON <b>121.85 275.8</b>	CLNC DEL <b>120.65 284.7</b>
------------------------------	--	-------------------------------	--------------------------------	--------------------------------	---------------------------------

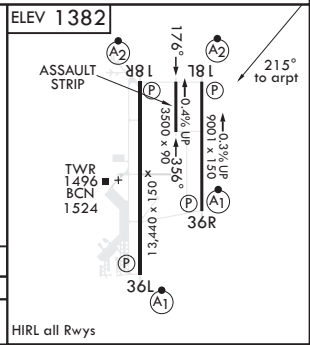
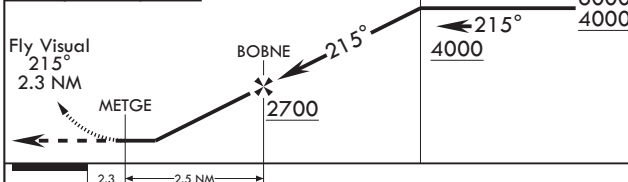


240°



## FOR USE BY 97 AMW ACFT ONLY

EMERG SAFE ALT 100 NM 4900



2.3	2.5 NM				
CATEGORY	A	B	C	D	E
<b>C</b> CIRCLING	NA			2080-3 698 (700-3)	2180-3 798 (800-3)

HIRL all Rwys

ALTUS, OKLAHOMA

34°40'N - 99°16'W

ALTUS AFB (KLTS)

Amdt 4 14JUL22  
TERPS

# RNAV (GPS)-A

SC-1, 22 FEB 2024 to 21 MAR 2024

SC-1, 22 FEB 2024 to 21 MAR 2024